

# ARCHITECTURAL WALL COATINGS

A complete family of architectural wall coatings designed to meet any aesthetic, performance, application or budget need





## Architectural Wall Coatings Designed to Beautify and Protect Your Structures

Dryvit® and Tremco® offer a complete family of architectural wall coatings designed to meet any performance, application, aesthetic or budget requirement.

Address efflorescence, chalking, peeling, cracking or flaking.

Minimize the effects of water intrusion, mildew, mold, and dirt.

Transform your aesthetic with eye-catching finish options from modern to classic.

### The Tremco CPG Difference



#### Faster Construction Time

In-plant fabrication can reduce production time, and speed up field application of exterior cladding systems, to reduce construction schedules.



#### Any Look You Want

A wide range of colors and finishes like brick, granite, metals, stucco and more provide maximum flexibility in your façade aesthetic.



#### Stronger and More Resilient

Our systems are designed for maximum durability, many with service lives far surpassing that of competing systems.



#### Avoid Labor Shortage Problems

Pre-fabricated Dryvit panels can help address ongoing shortages in the skilled labor force - while simultaneously maximizing quality control.



#### Cost-Effective for the Long Term

A broad range of products can fit most project budgets - but our energy-efficiency and maintenance solutions can also help you ensure cost-effective ownership and operation for the long term.



#### Better Insulated

Industry-leading Outsulation® continuous insulation means efficient construction and operation, and will exceed strict energy codes for insulation.



#### One Point of Contact

Our products and systems are backed by industry-leading warranties - all from a single point of contact. We can also help with everything from asset management to diagnostics to installer training.



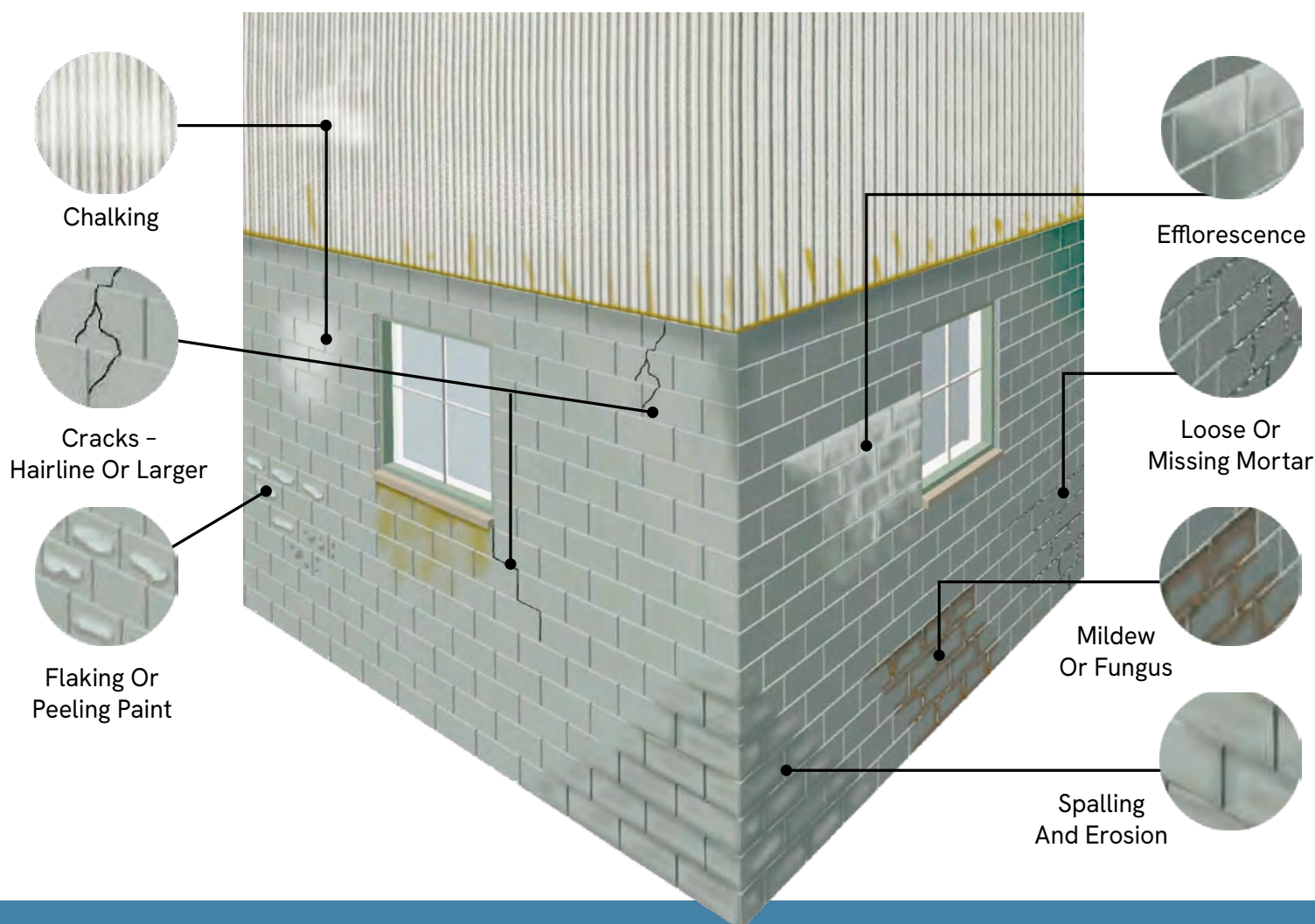
#### Leading Edge Sustainability

Our building solutions help you reduce waste, and meet green building standards like Net Zero, Living Building Challenge, Passive House and more.



# The Symptoms of Failing Exteriors

Rain, wind, snow, ultraviolet rays, and ineffective detailing will all take their toll on structures over time. Exterior deterioration eventually leads to even greater problems if not addressed. Unprotected exteriors and failing joints allow moisture intrusion and a multitude of other concerns, including — but not limited to — facade degradation, mold and mildew.



## Dryvit and Tremco Solutions

Because of our industry-unique relationship, Dryvit and Tremco have the solutions to ensure compatible, tested systems from the foundation to the roof:

- ✓ Exterior Insulation Finishing Systems (EIFS)
- ✓ Flashing, Air and Vapor Barrier Systems
- ✓ Pre-Compressed Foam Expansion Joint Products
- ✓ Sealants, Adhesives and Pre-Formed Transitions
- ✓ Insulated Concrete Form (ICF) Systems
- ✓ Commercial Glazing Sealants, Tapes and Extrusions



# RESTORE & PROTECT YOUR PROJECTS WITH DRYVIT'S ARCHITECTURAL FINISHES



Where full exterior finish and insulation systems (EIFS) are not needed or desired, Dryvit's full line of durable, 100% acrylic finishes are ideal for a wide range of interior and exterior surfaces, with options to meet any performance, aesthetic or budget requirement.

Available in a wide variety of bold, fade-resistant colors and textures, Demandit® and Weatherlastic® architectural finish solutions also contain advanced technologies to inhibit mold and mildew growth, resist dirt pickup, and waterproof surfaces for long-lasting beauty and performance.

Dryvit architectural coatings are also equally-suited for new construction or renovations — recoating, protecting and redecorating EIFS, primed concrete, masonry, stucco, wood, metal and more.

## DRYVIT ARCHITECTURAL FINISHES FEATURE:



Dirt Pickup  
Resistance



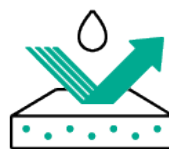
Easy  
Application



Mold  
Resistance



UV / Fade  
Resistance



Waterproof  
Performance



Wide Color  
Selection



Crack-  
Bridging



## FINISH SOLUTIONS FOR ANY APPLICATION:



### Demandit® Advantage

- Satin Sheen Finish
- 100% Acrylic Extends Life
- Vapor-Permeable: Won't Trap Moisture
- Easy to Clean

### Demandit® Smooth

- Smooth, Texture-Free Finish
- 100% Acrylic Extends Life
- Vapor-Permeable: Won't Trap Moisture
- Easy to Clean

### Demandit® Sanded

- Textured Finish
- 100% Acrylic Extends Life
- Vapor-Permeable: Won't Trap Moisture
- Easy to Clean

### Weatherlastic® HB

- High-Build, Fiber-Reinforced Finish
- Maximum-Strength Elastomeric
- 100% Acrylic
- Low-Temp Flexibility to Resist Cracks

### Weatherlastic® Smooth

- Smooth, Texture-Free Finish
- Water-Based, Elastomeric
- 100% Acrylic
- Low-Temp Flexibility to Resist Cracks

### Weatherlastic® Textured

- Multiple Textured Finish Options
- Water-Based, Elastomeric
- 100% Acrylic
- Low-Temp Flexibility to Resist Cracks

## STRATOTONE™ PIGMENT TECHNOLOGY ENSURES BOLD, FADE-RESISTANT COLOR — BACKED BY A LEADING WARRANTY

Bright, bold, fade-resistant textured finishes and coatings are easily achieved with StratoTone colorants from Dryvit. As is commonly known across many industries, designing with expressive color has been limited by the low UV-resistance of many commercial pigment systems. StratoTone raises the bar of color science to a whole new level of stability and color brightness, and does so with virtually no VOC or APEO content.

### FEATURES & BENEFITS OF STRATOTONE:

- High-Performance Colorants Resist Fading Longer
- Environmentally Friendly: No VOCs or APEO
- Ideal for Bright, Bold Colors
- Lasting Colors can be Applied with Confidence
- Available in a Wide Variety of Colors
- 250+ Standard Dryvit Colors Backed by 10-Year Warranty
- Custom Colors Backed by a 5-Year Warranty





# HDP<sup>TM</sup> WATER-REPELLENT COATING

HDP<sup>TM</sup> Water-Repellent Coating is 100% acrylic, has excellent water-repellent properties and is available in standard colors as well as custom colors. HDP Water-Repellent Coating is formulated to resist mold and mildew growth (PMR) and is hydrophobic, resulting in less dirt pick-up and a cleaner wall.

Without HDP technology, water droplets hit an exterior wall, flatten and cling to the surface until evaporation occurs. Frequently these same water droplets contain atmospheric dirt and contaminants, which can create an environment conducive to the growth of microbes such as mold and mildew. This growth is unsightly and if not removed, can potentially harm almost any exterior surface.

Dryvit HDP Coatings utilize both state-of-the-art silicone technology and fractal geometry to enable wall surfaces to repel water — allowing them to dry faster and slow the accumulation of dirt and other contaminants.

## FEATURES & BENEFITS

- ✓ Hydrophobic chemistry repels water and takes dirt with it
- ✓ Ideal for both new construction and renovation
- ✓ Resists mold and mildew growth

## COMMON APPLICATIONS

HDP Water-Repellent Coating is used to coat acrylic based textured finishes, masonry, stucco, wood, or primed metal.



After pressure washing the entire building below, HDP Coating was applied to only the left portion of the building. Five years later, it is still clean while the right side — without HDP Coating — shows the wear from normal environmental conditions.



# WEATHERLASTIC® SMOOTH

Weatherlastic® Smooth is a water-based elastomeric wall coating. It is easily applied with an airless spray or roller. Weatherlastic Smooth is based upon a 100% acrylic, copolymer elastomeric resin, which provides excellent elongation and flexibility at low temperatures. The coating resists mildew growth and dirt pickup and is highly chalk-resistant.

## FEATURES & BENEFITS

- ✓ Elastomeric formulation bridges hairline cracks
- ✓ Dirt Pickup Resistance (DPR) means walls stay cleaner longer
- ✓ Mildew-resistant
- ✓ Plasticizer-free, and with low temperature flexibility for maximum crack-resistance

## COMMON APPLICATIONS

Weatherlastic Smooth is recommended as a waterproof coating on properly prepared concrete, masonry, EIFS and stucco substrates.





# DEMANDIT<sup>®</sup> ADVANTAGE

Demandit<sup>®</sup> Advantage is a 100% acrylic high-performance coating with a satin sheen finish, and employs StratoTone<sup>™</sup> colorant technology. Demandit Advantage is offered in all standard, as well as custom colors, offers excellent stain resistance and contains the most effective ingredients available to resist mold and mildew growth (PMR) on the surface of the coating.

## FEATURES & BENEFITS

- ✓ High level of acrylic resin for maximum stain resistance
- ✓ StratoTone pigments provide increased fade resistance
- ✓ DPR/PMR chemistry resists dirt-pickup, mold and mildew
- ✓ Vapor-permeable: will not trap moisture vapor
- ✓ Cleans quickly and easily with only water

## COMMON APPLICATIONS

Demandit Advantage is equally suited for new construction of renovations to recoat, protect and redecorate EIFS, primed concrete, masonry, stucco, wood and metal.

# DEMANDIT<sup>®</sup> SMOOTH

Demandit<sup>®</sup> Smooth is a 100% acrylic coating, which is offered in a variety of standard and custom colors. Demandit Smooth contains the most effective ingredients available to help resist mold and mildew growth (PMR).

## FEATURES & BENEFITS

- ✓ 100% acrylic formulation extends the life of re-coated surfaces
- ✓ DPR/PMR chemistry is resistant to dirt-pickup, mold and mildew
- ✓ Vapor-permeable: will not trap moisture vapor
- ✓ Can be applied by brush, trowel, or sprayer
- ✓ Cleans quickly and easily with only water

## COMMON APPLICATIONS

Demandit Smooth is a durable coating, which may be used to change the color of an existing Dryvit or other acrylic-textured finish. It can also be used to protect and decorate concrete, masonry, stucco, wood, primed metal and more.





# DEMANDIT<sup>®</sup> SANDED

Demandit<sup>®</sup> Sanded is a 100% acrylic coating, which is offered in a variety of standard and custom colors. Demandit Sanded contains the most effective ingredients available to help resist mold and mildew growth (PMR).

## FEATURES & BENEFITS

- ✓ 100% acrylic formulation extends the life of re-coated surfaces
- ✓ DPR/PMR chemistry is resistant to dirt-pickup, mold and mildew
- ✓ Vapor-permeable: will not trap moisture vapor
- ✓ Can be applied by brush, trowel, or sprayer
- ✓ Cleans quickly and easily with only water

## COMMON APPLICATIONS

Demandit Sanded is a durable coating, which may be used to change the color of an existing Dryvit or other acrylic-textured finish. It can also be used to protect and decorate concrete, masonry, stucco, wood, primed metal and more.



# TUSCAN GLAZE<sup>®</sup>

Tuscan Glaze<sup>®</sup> is used as an antique stain to simulate century-old plaster, and was designed to obtain a faux or “mottled” appearance on Dryvit finishes. Tuscan Glaze works best when applied over fine aggregate finishes, such as Freestyle<sup>®</sup>, Limestone<sup>™</sup> and Weatherlastic<sup>®</sup> Adobe. It is available in 12 standard colors.

## FEATURES & BENEFITS

- ✓ Can be applied over many textures for a fully-customizable look
- ✓ 12 standard colors ensure consistency
- ✓ 100% acrylic formula is easy to use and apply

## COMMON APPLICATIONS

While Tuscan Glaze is often used in residential applications, it has also been successfully used on commercial projects, especially in the retail, hospitality and entertainment industries in which uniqueness and specific architectural appearance are highly-valued.



# WEATHERLASTIC® HB

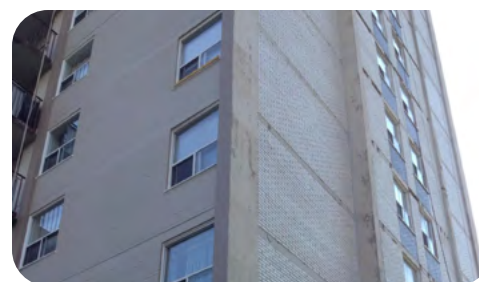
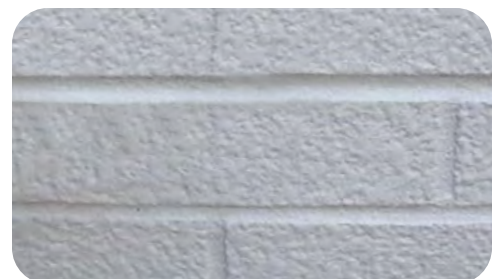
Weatherlastic HB is a high-build, fiber-reinforced, water-based, acrylic wall coating formulated to provide a tough, durable, flexible, and breathable film protection for concrete and masonry surfaces. Weatherlastic HB can be applied in a single coat up to 32 wet mils and can be used to bridge cracks.

## FEATURES & BENEFITS

- ✓ Resists the effects of water and weather, making it an ideal coating for long-lasting waterproofing protection
- ✓ Fiber reinforced for added strength and durability
- ✓ Bridges hairline cracks
- ✓ Resists the growth of mold and fungus
- ✓ VOC compliant @ <100 g/L

## COMMON APPLICATIONS

- ✓ Concrete, cast-in-place or pre-cast CMU
- ✓ Previously painted masonry
- ✓ Brick and stone
- ✓ EIFS
- ✓ Stucco
- ✓ Metal and PVC (w/ primer)



# DYMONIC® 100

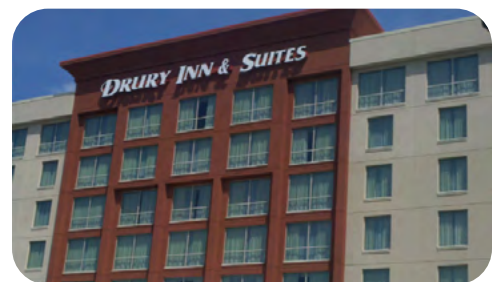
Dymonic® 100 is a high-performance, high-movement, single-component, medium-modulus, low-VOC, UV-stable, non-sag polyurethane sealant. It is a durable, flexible sealant that offers excellent performance in moving joints and exhibits tenacious adhesion once fully cured.

## FEATURES & BENEFITS

- ✓ Can adhere to damp or green concrete and has a skin time of 2 hr with a tack-free time of 6 to 8 hr to significantly reduce dirt attraction.
- ✓ Movement capability of +100/-50% in typical field conditions
- ✓ Low VOC, paintable, jet fuel-resistant, and will not crack, craze or yellow under extreme UV exposure
- ✓ Suitable for water immersion and will not out gas

## COMMON APPLICATIONS

- ✓ Expansion and control joints,
- ✓ Precast concrete panel joints
- ✓ Window, door & panel perimeter caulking
- ✓ Aluminum, masonry and vinyl siding





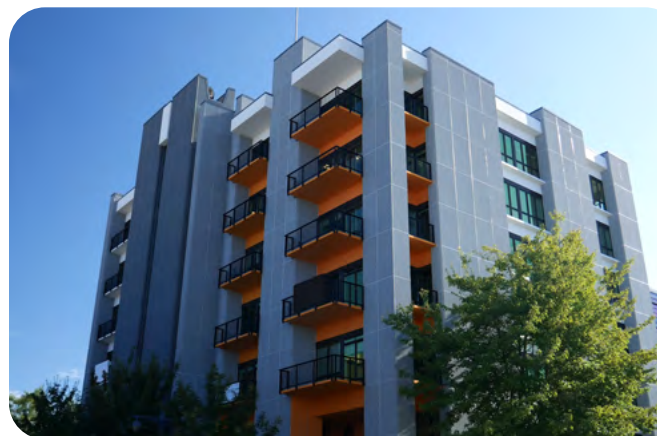
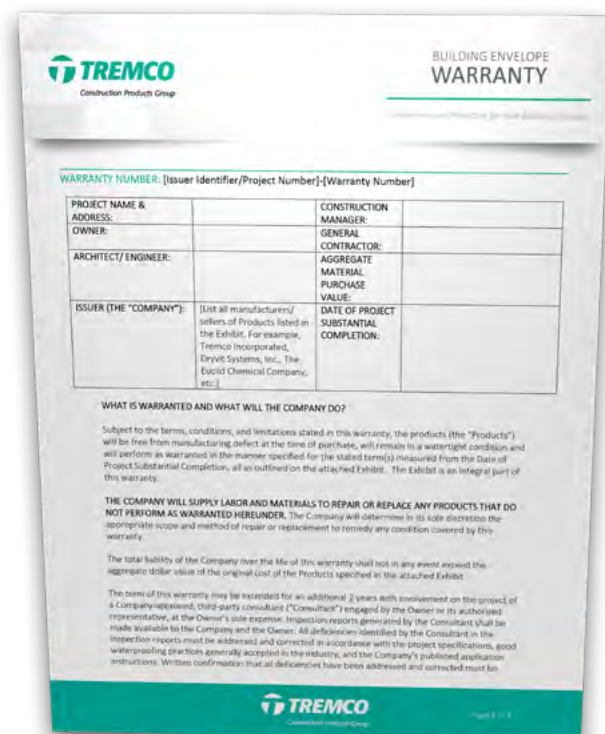
# One Building Envelope. One Warranty. One System Delivering Unmatched Protection.

Why risk cobbling together the envelope with materials from dozens of different suppliers, when you can choose a Tremco Construction Products Group (CPG) building envelope — designed and tested to work as one continuous system and warranted together in a single document? That's one warranty document handed over to building owners at the completion of any project, and one call if a problem ever arises.

That means fewer call-backs. And access to a range of technologies that will speed construction, simplify installation and lengthen the construction season. In the unlikely event of product defect, we will also cover associated labor costs to make the necessary repair.

## Systems & Services Covered Under a Single Warranty

- ✓ Air & Vapor Barriers
- ✓ Sealants & Adhesives
- ✓ Cladding
- ✓ Traffic Coatings
- ✓ Glazing Systems
- ✓ Waterproofing
- ✓ Insulated Concrete Forms



"One family of companies, by one contractor. It just really makes our life easier — and it makes our projects better.

500 Pacific Ave.  
Bremerton, Washington

Dryvit Air Barriers and Prefabricated Panels  
Tremco Traffic Coatings and Sealants



Scan or click to see  
the full case study



800.852.6013 | [tremcocpg.com](https://tremcocpg.com)

