

StucCoat 3-Coat with Continuous Insulation

Three-Coat Portland Cement Plaster Applied to
Metal or Wood Framed Walls with Continuous Insulation

DS1032

StucCoat 3-Coat with Continuous Insulation Installation Details

Table of Contents

Detail

STUCCOAT 3-COAT SYSTEM CUTAWAY	SCTC-CI-01
FLANGED WINDOW HEAD	SCTC-CI-02
FLANGED WINDOW JAMB	SCTC-CI-03
FLANGED WINDOW SILL	SCTC-CI-04
STOREFRONT WINDOW HEAD	SCTC-CI-05
STOREFRONT WINDOW JAMB	SCTC-CI-06
STOREFRONT WINDOW SILL	SCTC-CI-07
SLOPED WINDOW SILL	SCTC-CI-08
OUTSIDE CORNER	SCTC-CI-09
INSIDE CORNER	SCTC-CI-10
INSIDE CORNER CONTROL JOINT	SCTC-CI-11
SOFFIT/FASCIA INTERSECTION	SCTC-CI-12
EXPANSION JOINT INTERSECTION	SCTC-CI-13
PIPE RAILING ATTACHMENT	SCTC-CI-14
PENETRATION	SCTC-CI-15
TERMINATION AT CONCRETE FOUNDATION	SCTC-CI-16
TERMINATION AT ROOF/WALL INTERSECTION	SCTC-CI-17
TERMINATION AT ROOF/WALL INTERSECTION -FLAT ROOF	SCTC-CI-18
TERMINATION AT ROOF/WALL INTERSECTION -SHINGLED ROOF	SCTC-CI-19
TERMINATION AT PARAPET/WALL INTERSECTION	SCTC-CI-20
PARAPET FLASHING	SCTC-CI-21
EPS CORNICE	SCTC-CI-22
HORIZONTAL FLASHING AND EXPANSION JOINT	SCTC-CI-23
HORIZONTAL EXPANSION JOINT	SCTC-CI-24
TWO PIECE HORIZONTAL EXPANSION JOINT	SCTC-CI-25
HORIZONTAL TERMINATION AT BRICK WALL	SCTC-CI-26

NOTE:

TREMCO CPG MAKES NO REPRESENTATION REGARDING CONFORMITY OF ITS SUGGESTIONS TO MODEL BUILDING CODES, ENGINEERING CRITERIA, SPECIFIC APPLICATIONS, OR PROJECT LOCATIONS. ALL COMPONENTS INDICATED IN ILLUSTRATIONS, AS WELL AS OTHERS THAT MAY BE REQUIRED FOR THE INTEGRITY OF THE SYSTEM SHALL BE DESIGNED, DETAILED, AND ENGINEERED BY REPRESENTATIVES OF THE ARCHITECT, OWNER, OR CONTRACTOR TO BE IN CONFORMANCE WITH MODEL CODES, ARCHITECTURAL, AND ENGINEERING REQUIREMENTS PERTAINING TO SPECIFIC BUILDING PROJECTS.

TREMCO CPG MAKES NO WARRANTY, EXPRESSED OR IMPLIED, AS TO THE ARCHITECTURAL DESIGN, ENGINEERING, OR WORKMANSHIP OF PROJECTS UTILIZING TREMCO CPG SYSTEMS OR PRODUCTS.

THE LIABILITIES OF TREMCO CPG SHALL BE AS STATED IN THE STANDARD WARRANTY. CONTACT TREMCO CPG FOR A FULL AND COMPLETE COPY OF THE WARRANTY.

This detail is for general informational purposes only. The project design professional determines, in its sole discretion, whether this detail or a functionally equivalent detail is best suited for the project with respect to any architecture, engineering, and design requirements, including any local building code requirements. If this document is not reviewed and the product is not approved for use by a licensed design professional, the customer agrees that the detail may contain substantive flaws requiring correction, and hereby releases Tremco CPG Inc. from any and all liability related to the design and installation of the product. This detail is subject to change without notice. Contact Tremco to ensure you have the most recent version.

StucCoat 3-Coat with Continuous Insulation

Detail: Table of Contents

File Name:

Drawn by: KAB

Checked by: AL

Scale: NTS

TOC

Revision #: 00

Revised by: -

Date: 1/23/2025

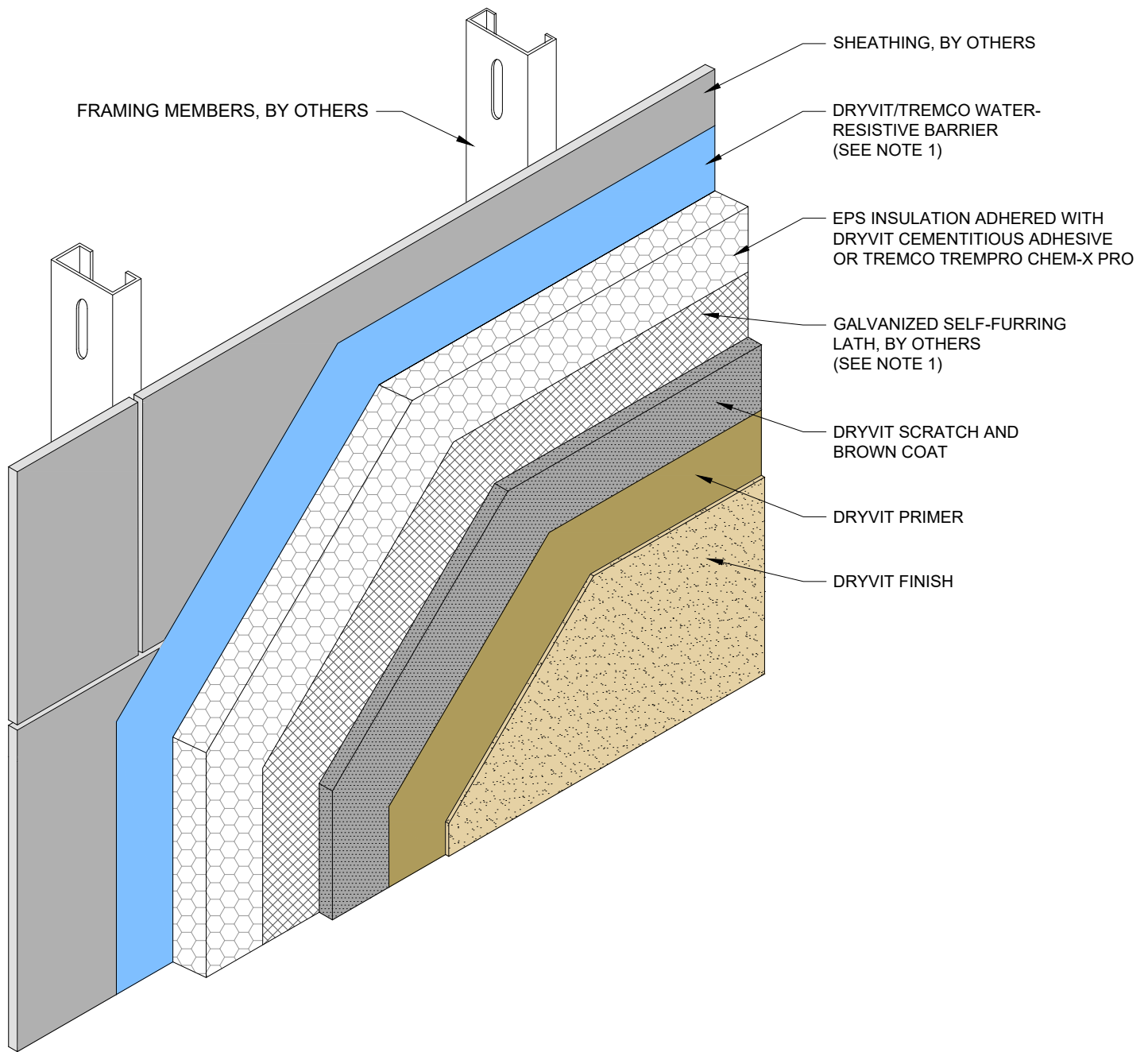


Dryvit Technical Support: 800-556-7752



Construction Products Group

www.tremcocpg.com



NOTES:

1. BUILDING CODES REQUIRE 2 LAYERS OVER WOOD BASED SUBSTRATES. COMPLY WITH ALL LOCAL CODE REQUIREMENTS.

This detail is for general informational purposes, only. The project design professional determines, in its sole discretion, whether this detail or a functionally equivalent detail is best suited for the project with respect to any architecture, engineering, and design requirements, including any local building code requirements. If this document is not reviewed and the product is not approved for use by a licensed design professional, the customer agrees that the detail may contain substantive flaws requiring correction, and hereby releases Tremco CPG Inc. from any and all liability related to the design and installation of the product. This detail is subject to change without notice. Contact Tremco to ensure you have the most recent version.

StucCoat 3-Coat with Continuous Insulation

Detail: StucCoat 3-Coat with Continuous Insulation System Cutaway

File Name:

Drawn by: KAB

Checked by: AL

Scale: NTS

Revision #: 00

Revised by: -

Date: 1/23/2025

SCTC-CI-01

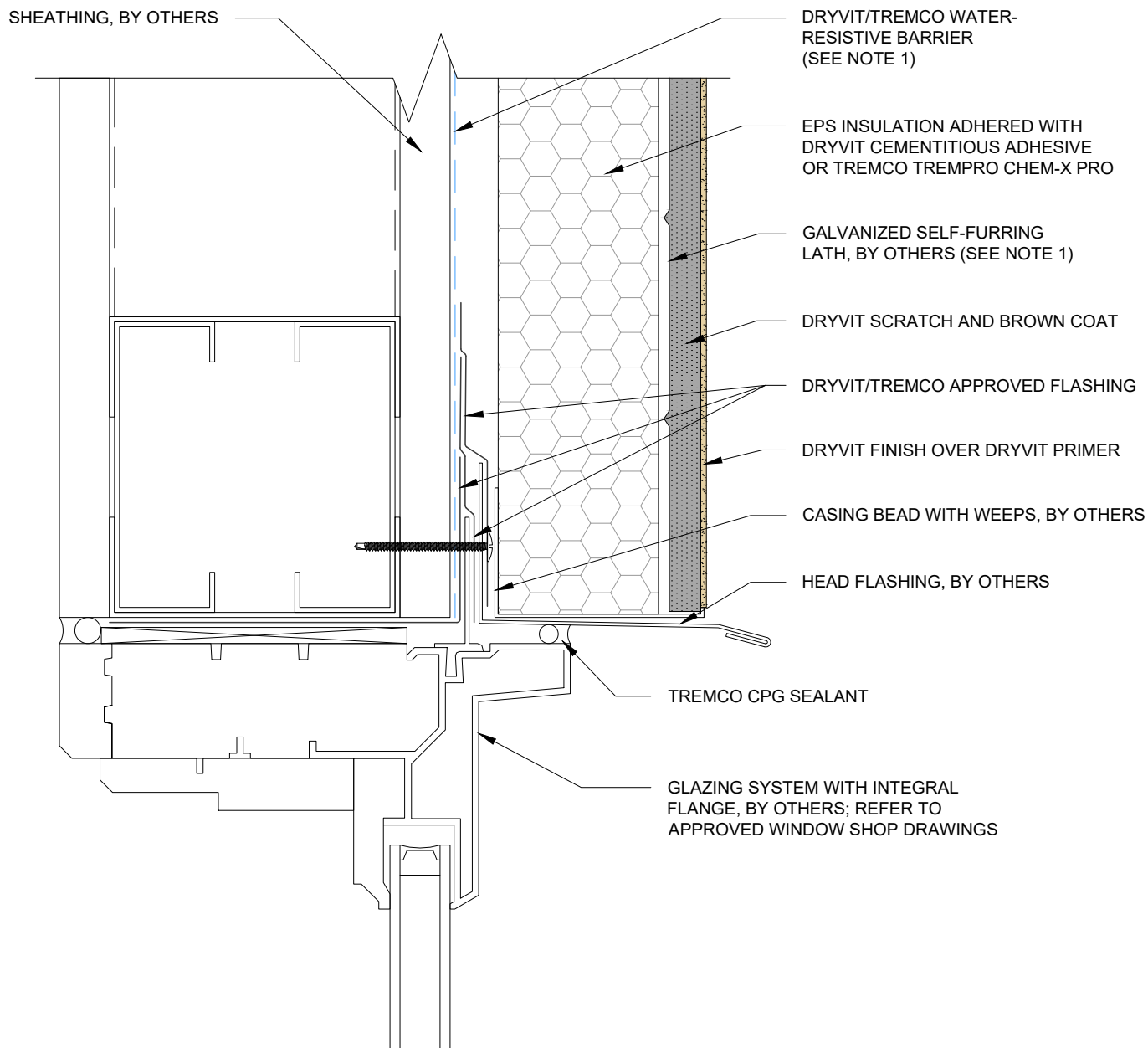


Dryvit Technical Support: 800-556-7752

www.tremcocpg.com



Construction Products Group



NOTES:

1. BUILDING CODES REQUIRE 2 LAYERS OVER WOOD BASED SUBSTRATES. COMPLY WITH ALL LOCAL CODE REQUIREMENTS.

This detail is for general informational purposes, only. The project design professional determines, in its sole discretion, whether this detail or a functionally equivalent detail is best suited for the project with respect to any architecture, engineering, and design requirements, including any local building code requirements. If this document is not reviewed and the product is not approved for use by a licensed design professional, the customer agrees that the detail may contain substantive flaws requiring correction, and hereby releases Tremco CPG Inc. from any and all liability related to the design and installation of the product. This detail is subject to change without notice. Contact Tremco to ensure you have the most recent version.

StucCoat 3-Coat with Continuous Insulation

Detail: Flanged Window Head

File Name:

Drawn by: KAB

Checked by: AL

Scale: 6" = 1'-0"

SCTC-CI-02

Revision #: 00

Revised by: -

Date: 1/23/2025

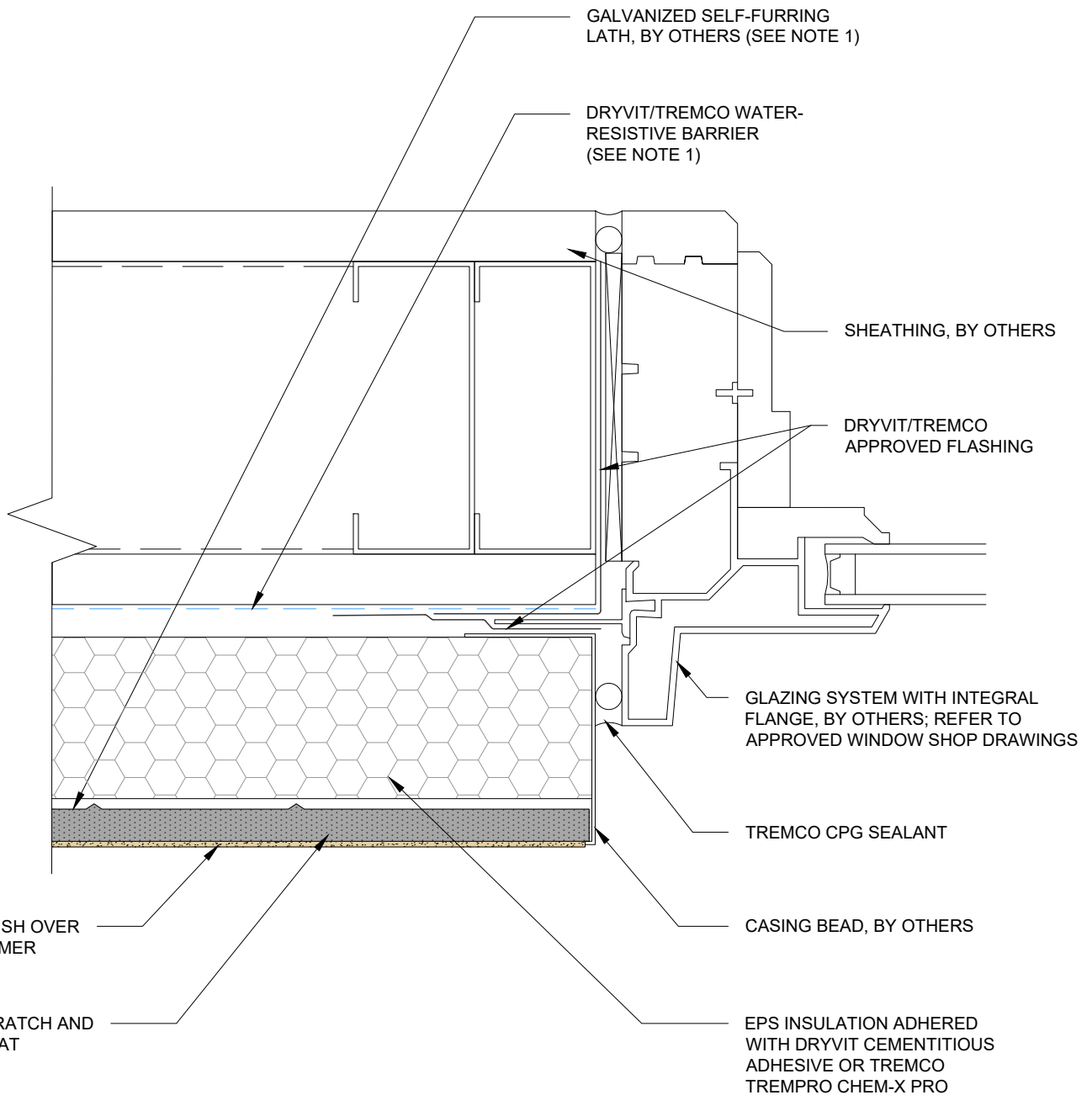
www.tremcocpg.com



Dryvit Technical Support: 800-556-7752



Construction Products Group



NOTES:

1. BUILDING CODES REQUIRE 2 LAYERS OVER WOOD BASED SUBSTRATES. COMPLY WITH ALL LOCAL CODE REQUIREMENTS.

This detail is for general informational purposes, only. The project design professional determines, in its sole discretion, whether this detail or a functionally equivalent detail is best suited for the project with respect to any architecture, engineering, and design requirements, including any local building code requirements. If this document is not reviewed and the product is not approved for use by a licensed design professional, the customer agrees that the detail may contain substantive flaws requiring correction, and hereby releases Tremco CPG Inc. from any and all liability related to the design and installation of the product. This detail is subject to change without notice. Contact Tremco to ensure you have the most recent version.

StucCoat 3-Coat with Continuous Insulation

Detail: Flanged Window Jamb

File Name:

Drawn by: KAB

Checked by: AL

Scale: 6" = 1'-0"

SCTC-CI-03

Revision #: 00

Revised by: -

Date: 1/23/2025

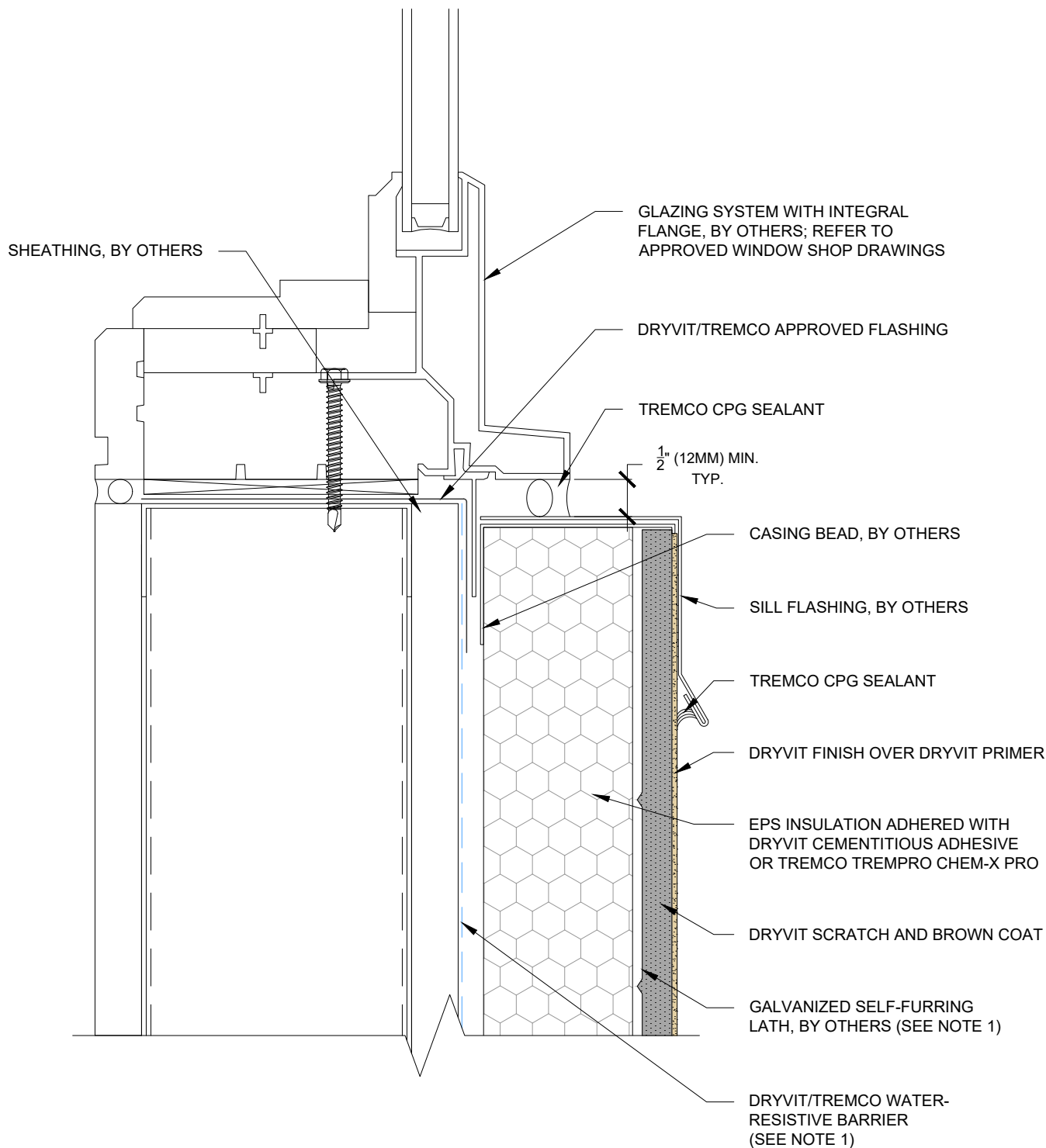
www.tremcocpg.com



Dryvit Technical Support: 800-556-7752



Construction Products Group



NOTES:

- BUILDING CODES REQUIRE 2 LAYERS OVER WOOD BASED SUBSTRATES. COMPLY WITH ALL LOCAL CODE REQUIREMENTS.

This detail is for general informational purposes, only. The project design professional determines, in its sole discretion, whether this detail or a functionally equivalent detail is best suited for the project with respect to any architecture, engineering, and design requirements, including any local building code requirements. If this document is not reviewed and the product is not approved for use by a licensed design professional, the customer agrees that the detail may contain substantive flaws requiring correction, and hereby releases Tremco CPG Inc. from any and all liability related to the design and installation of the product. This detail is subject to change without notice. Contact Tremco to ensure you have the most recent version.

StucCoat 3-Coat with Continuous Insulation

Detail: Flanged Window Sill

File Name:

Drawn by: KAB

Checked by: AL

Scale: 6" = 1'-0"

SCTC-CI-04

Revision #: 00

Revised by: -

Date: 1/23/2025

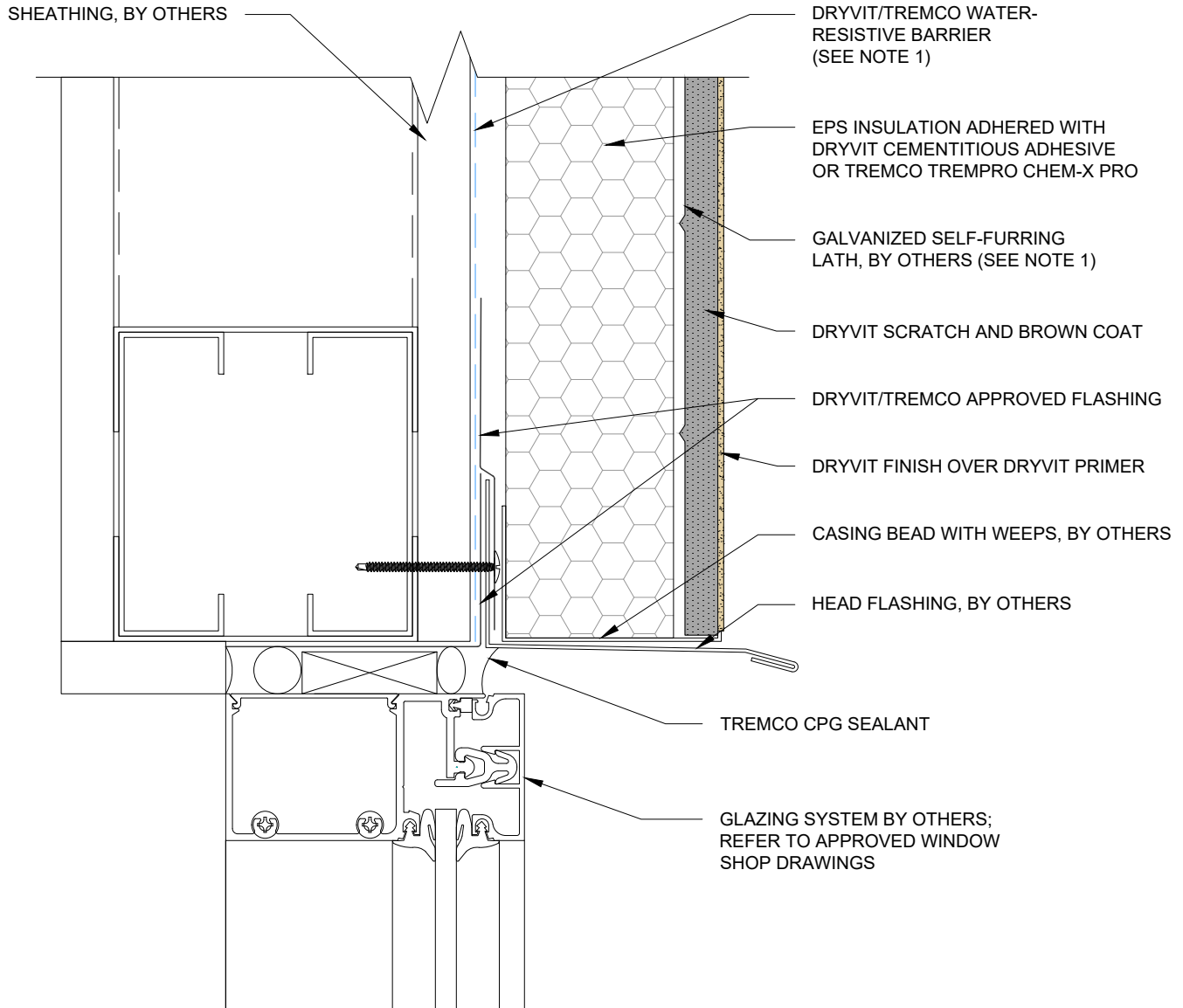
www.tremcocpg.com



Dryvit Technical Support: 800-556-7752



Construction Products Group



NOTES:

1. BUILDING CODES REQUIRE 2 LAYERS OVER WOOD BASED SUBSTRATES. COMPLY WITH ALL LOCAL CODE REQUIREMENTS.

This detail is for general informational purposes, only. The project design professional determines, in its sole discretion, whether this detail or a functionally equivalent detail is best suited for the project with respect to any architecture, engineering, and design requirements, including any local building code requirements. If this document is not reviewed and the product is not approved for use by a licensed design professional, the customer agrees that the detail may contain substantive flaws requiring correction, and hereby releases Tremco CPG Inc. from any and all liability related to the design and installation of the product. This detail is subject to change without notice. Contact Tremco to ensure you have the most recent version.

StucCoat 3-Coat with Continuous Insulation

Detail: Storefront Window Sill

File Name:

Drawn by: KAB

Checked by: AL

Scale: 6" = 1'-0"

SCTC-CI-05

Revision #: 00

Revised by: -

Date: 1/23/2025

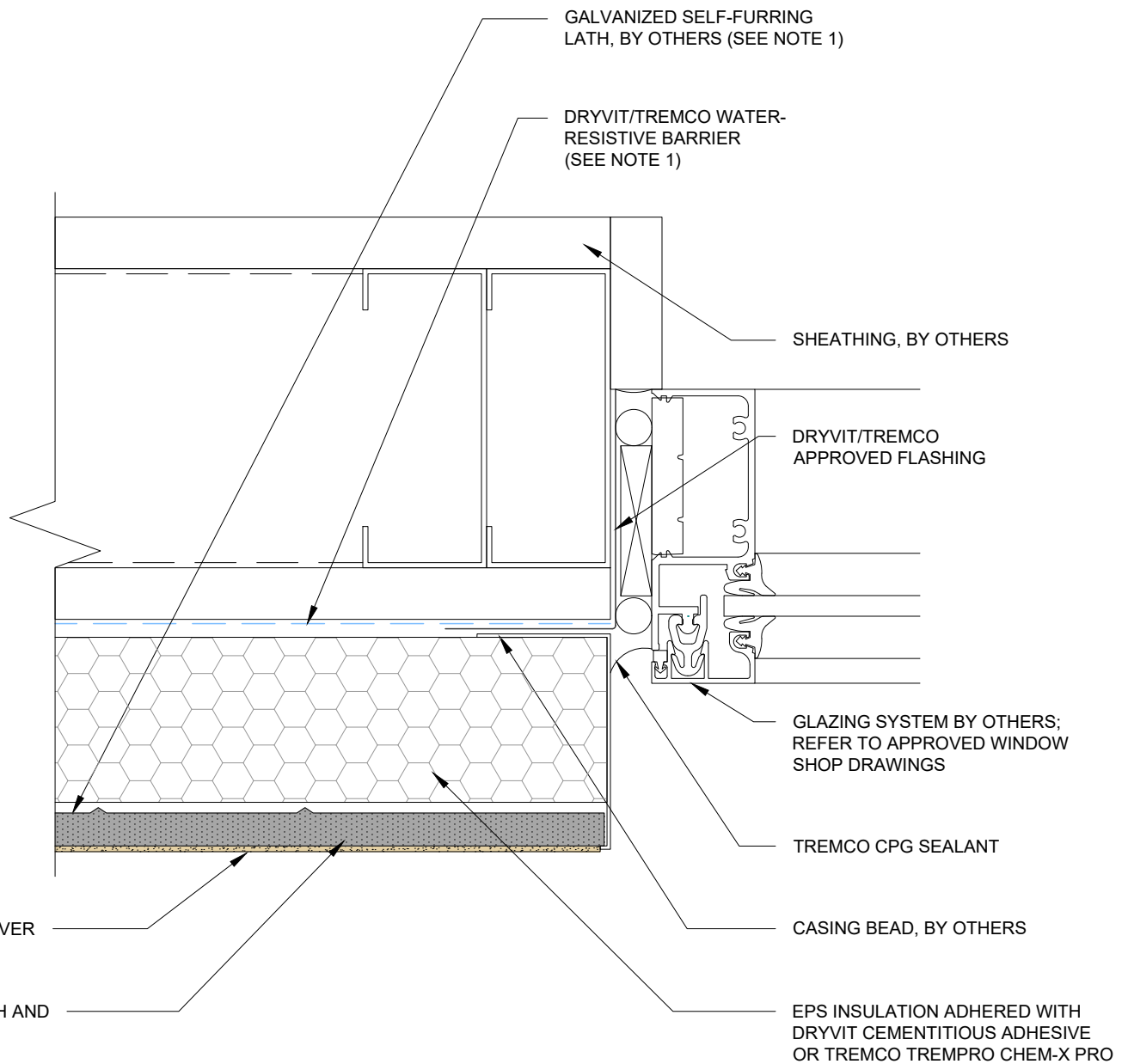
www.tremcocpg.com



Dryvit Technical Support: 800-556-7752



Construction Products Group



NOTES:

1. BUILDING CODES REQUIRE 2 LAYERS OVER WOOD BASED SUBSTRATES. COMPLY WITH ALL LOCAL CODE REQUIREMENTS.

This detail is for general informational purposes, only. The project design professional determines, in its sole discretion, whether this detail or a functionally equivalent detail is best suited for the project with respect to any architecture, engineering, and design requirements, including any local building code requirements. If this document is not reviewed and the product is not approved for use by a licensed design professional, the customer agrees that the detail may contain substantive flaws requiring correction, and hereby releases Tremco CPG Inc. from any and all liability related to the design and installation of the product. This detail is subject to change without notice. Contact Tremco to ensure you have the most recent version.

StucCoat 3-Coat with Continuous Insulation

Detail: Storefront Window Jamb

File Name:

Drawn by: KAB

Checked by: AL

Scale: 6" = 1'-0"

SCTC-CI-06

Revision #: 00

Revised by: -

Date: 1/23/2025

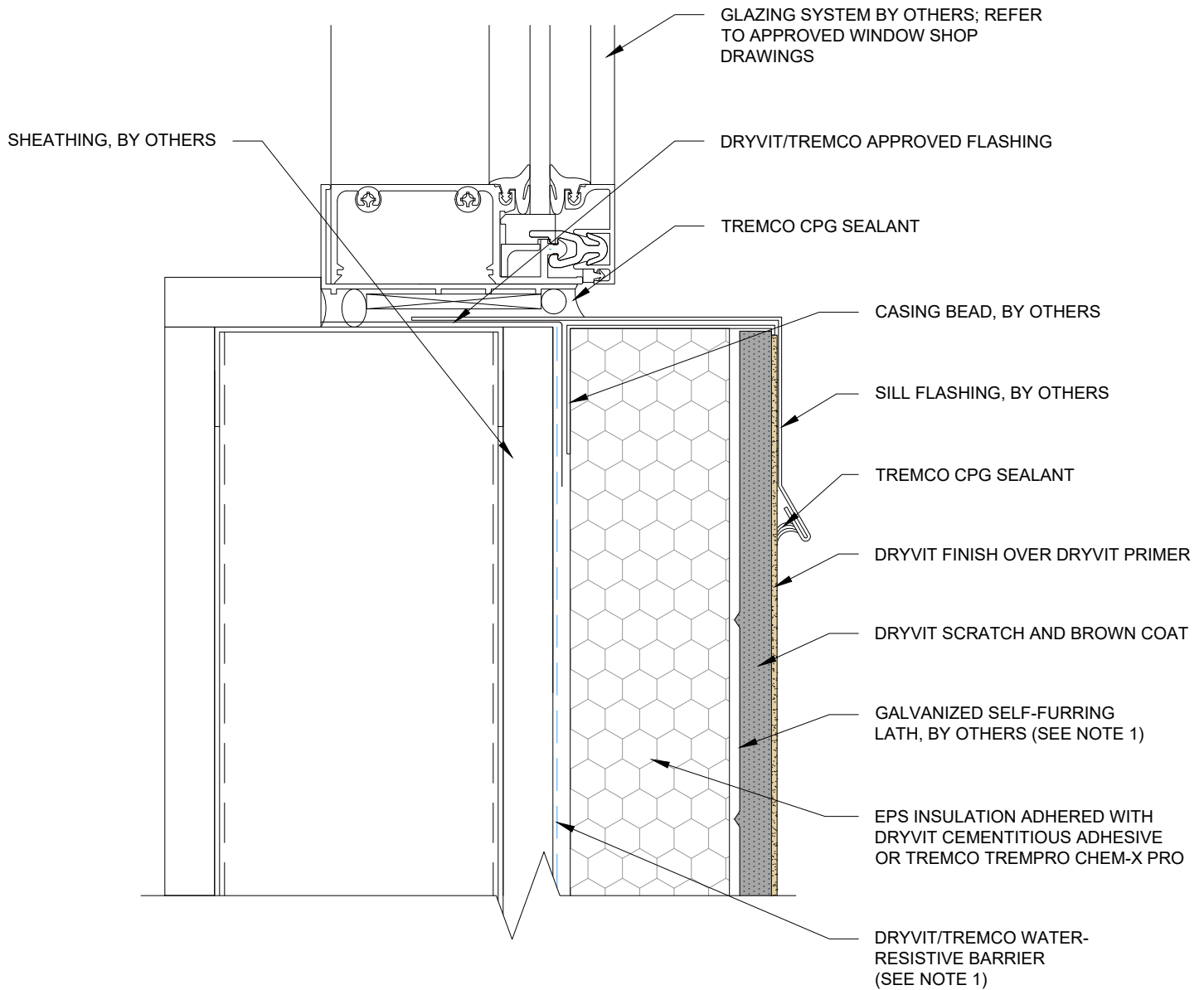
www.tremcocpg.com



Dryvit Technical Support: 800-556-7752



Construction Products Group



NOTES:

1. BUILDING CODES REQUIRE 2 LAYERS OVER WOOD BASED SUBSTRATES. COMPLY WITH ALL LOCAL CODE REQUIREMENTS.

This detail is for general informational purposes, only. The project design professional determines, in its sole discretion, whether this detail or a functionally equivalent detail is best suited for the project with respect to any architecture, engineering, and design requirements, including any local building code requirements. If this document is not reviewed and the product is not approved for use by a licensed design professional, the customer agrees that the detail may contain substantive flaws requiring correction, and hereby releases Tremco CPG Inc. from any and all liability related to the design and installation of the product. This detail is subject to change without notice. Contact Tremco to ensure you have the most recent version.

StucCoat 3-Coat with Continuous Insulation

Detail: Storefront Window Sill

File Name:

Drawn by: KAB

Checked by: AL

Scale: 6" = 1'-0"

SCTC-CI-07

Revision #: 00

Revised by: -

Date: 1/23/2025

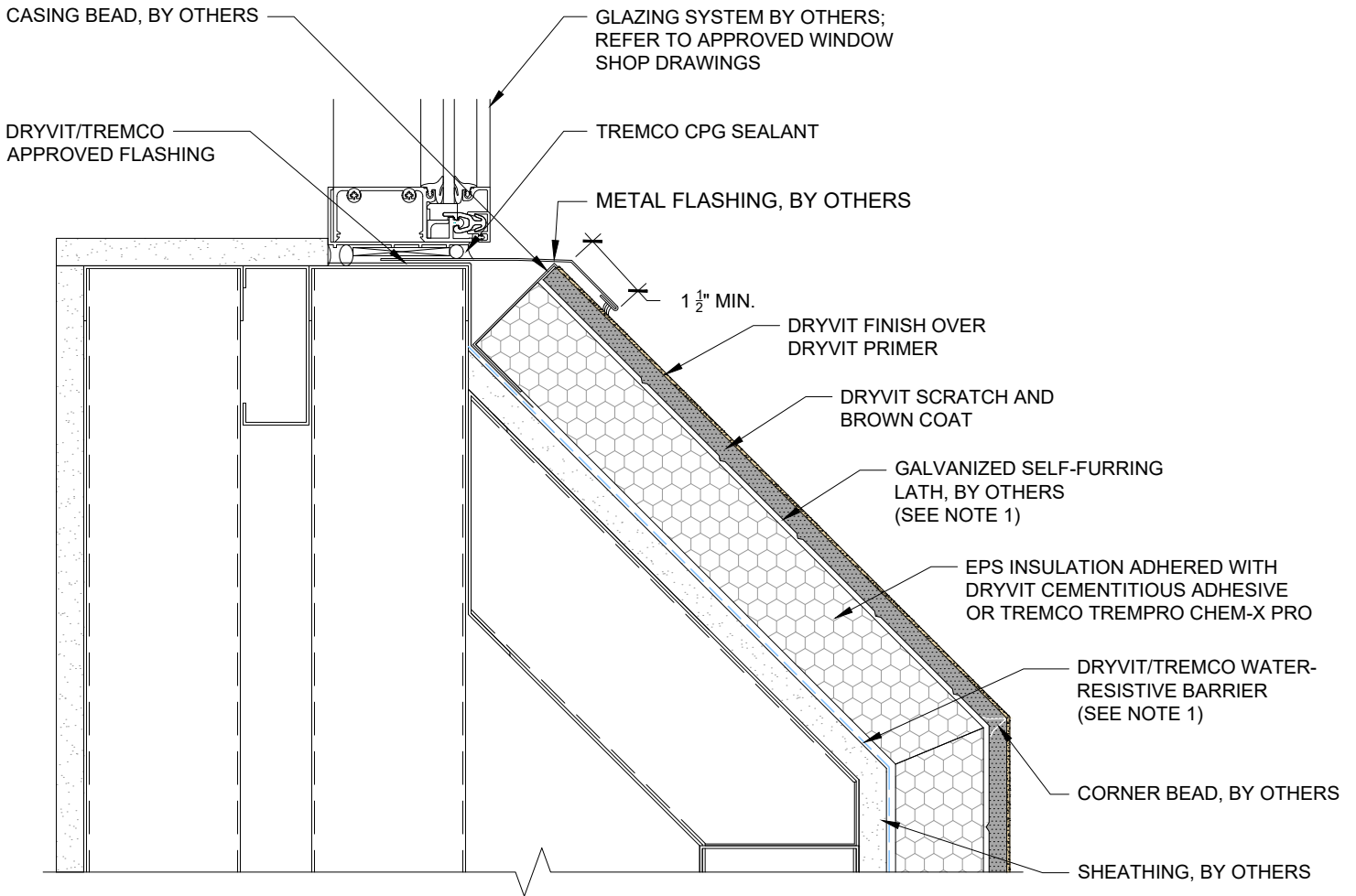
www.tremcocpg.com



Dryvit Technical Support: 800-556-7752



Construction Products Group



NOTES:
 1. BUILDING CODES REQUIRE 2 LAYERS OVER WOOD BASED SUBSTRATES. COMPLY WITH ALL LOCAL CODE REQUIREMENTS.

This detail is for general informational purposes only. The project design professional determines, in its sole discretion, whether this detail or a functionally equivalent detail is best suited for the project with respect to any architecture, engineering, and design requirements, including any local building code requirements. If this document is not reviewed and the product is not approved for use by a licensed design professional, the customer agrees that the detail may contain substantive flaws requiring correction, and hereby releases Tremco CPG Inc. from any and all liability related to the design and installation of the product. This detail is subject to change without notice. Contact Tremco to ensure you have the most recent version.

StucCoat 3-Coat with Continuous Insulation

Detail: Sloped Sill

File Name:

Drawn by: KAB

Checked by: AL

Scale: 6" = 1'-0"

SCTC-CI-08

Revision #: 00

Revised by: -

Date: 1/23/2025

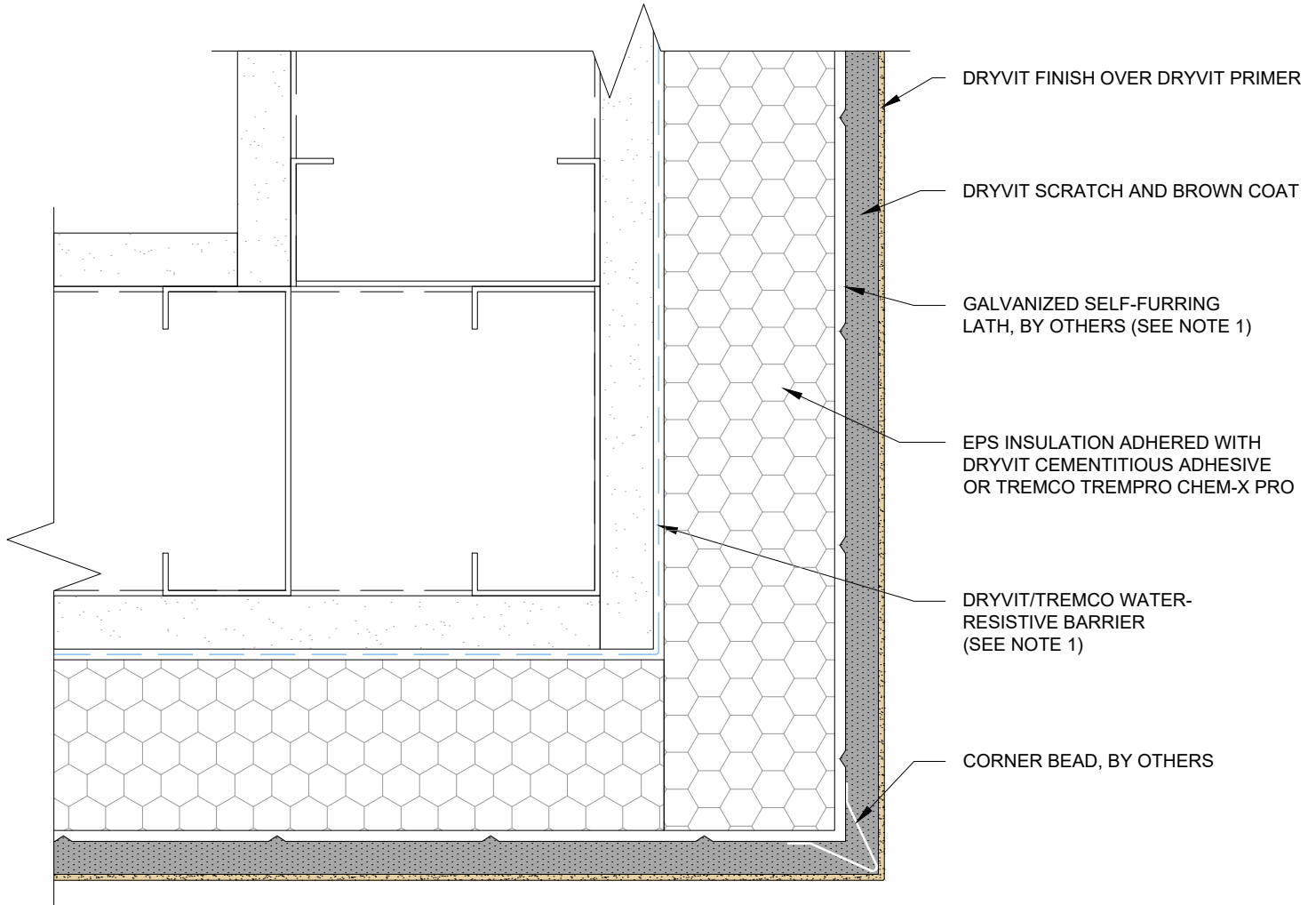
www.tremcocpg.com



Dryvit Technical Support: 800-556-7752



Construction Products Group



NOTES:

1. BUILDING CODES REQUIRE 2 LAYERS OVER WOOD BASED SUBSTRATES. COMPLY WITH ALL LOCAL CODE REQUIREMENTS.

This detail is for general informational purposes, only. The project design professional determines, in its sole discretion, whether this detail or a functionally equivalent detail is best suited for the project with respect to any architecture, engineering, and design requirements, including any local building code requirements. If this document is not reviewed and the product is not approved for use by a licensed design professional, the customer agrees that the detail may contain substantive flaws requiring correction, and hereby releases Tremco CPG Inc. from any and all liability related to the design and installation of the product. This detail is subject to change without notice. Contact Tremco to ensure you have the most recent version.

StucCoat 3-Coat with Continuous Insulation

Detail: Outside Corner

File Name:

Drawn by: KAB

Checked by: AL

Scale: 6" = 1'-0"

SCTC-CI-09

Revision #: 00

Revised by: -

Date: 1/23/2025

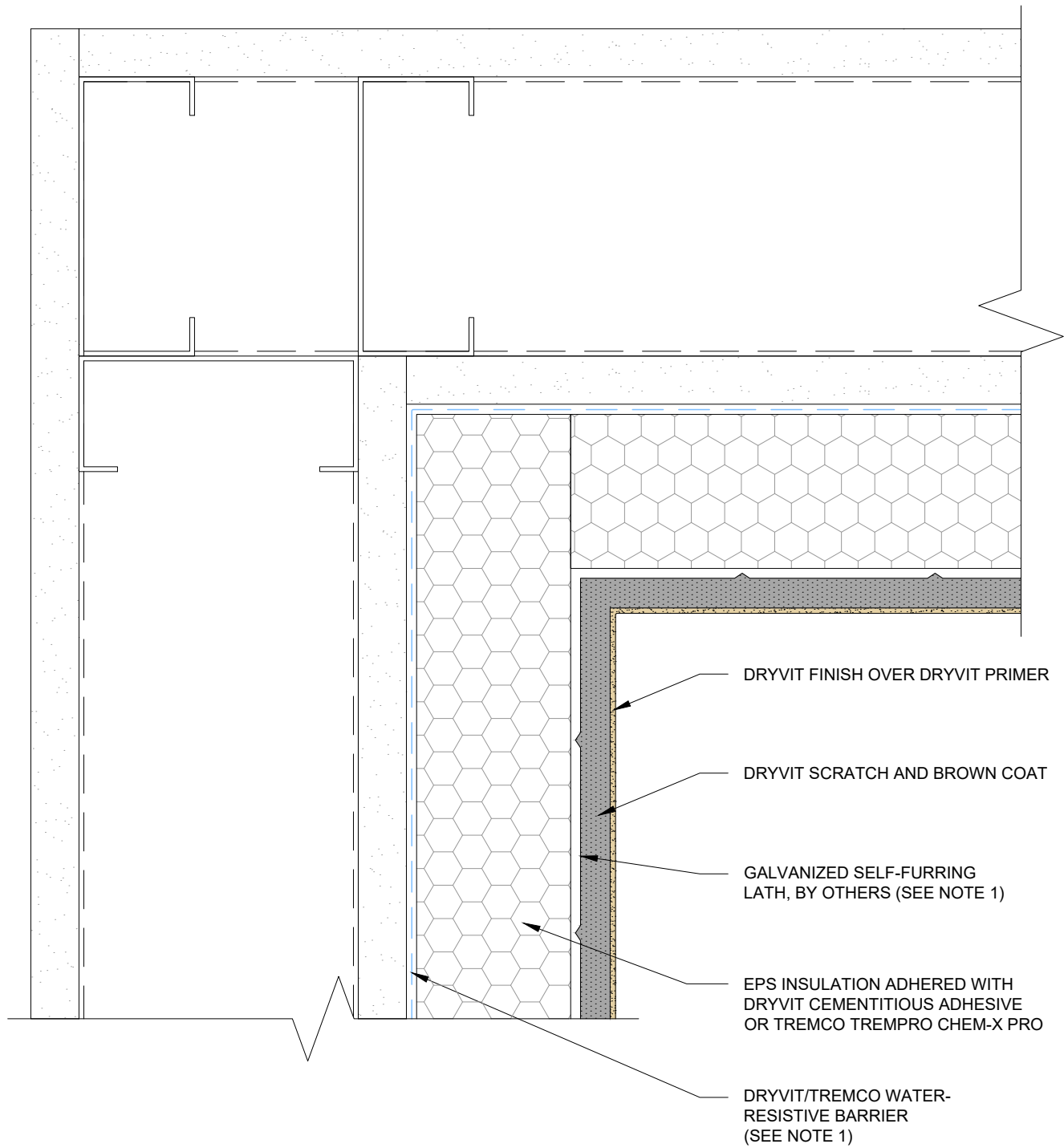
www.tremcocpg.com



Dryvit Technical Support: 800-556-7752



Construction Products Group



NOTES:

1. BUILDING CODES REQUIRE 2 LAYERS OVER WOOD BASED SUBSTRATES. COMPLY WITH ALL LOCAL CODE REQUIREMENTS.

This detail is for general informational purposes, only. The project design professional determines, in its sole discretion, whether this detail or a functionally equivalent detail is best suited for the project with respect to any architecture, engineering, and design requirements, including any local building code requirements. If this document is not reviewed and the product is not approved for use by a licensed design professional, the customer agrees that the detail may contain substantive flaws requiring correction, and hereby releases Tremco CPG Inc. from any and all liability related to the design and installation of the product. This detail is subject to change without notice. Contact Tremco to ensure you have the most recent version.

StucCoat 3-Coat with Continuous Insulation

Detail: Inside Corner

Drawn by: KAB

Revision #: 00

Checked by: AL

Revised by: -

Scale: 6" = 1'-0"

Date: 1/23/2025

File Name:

SCTC-CI-10

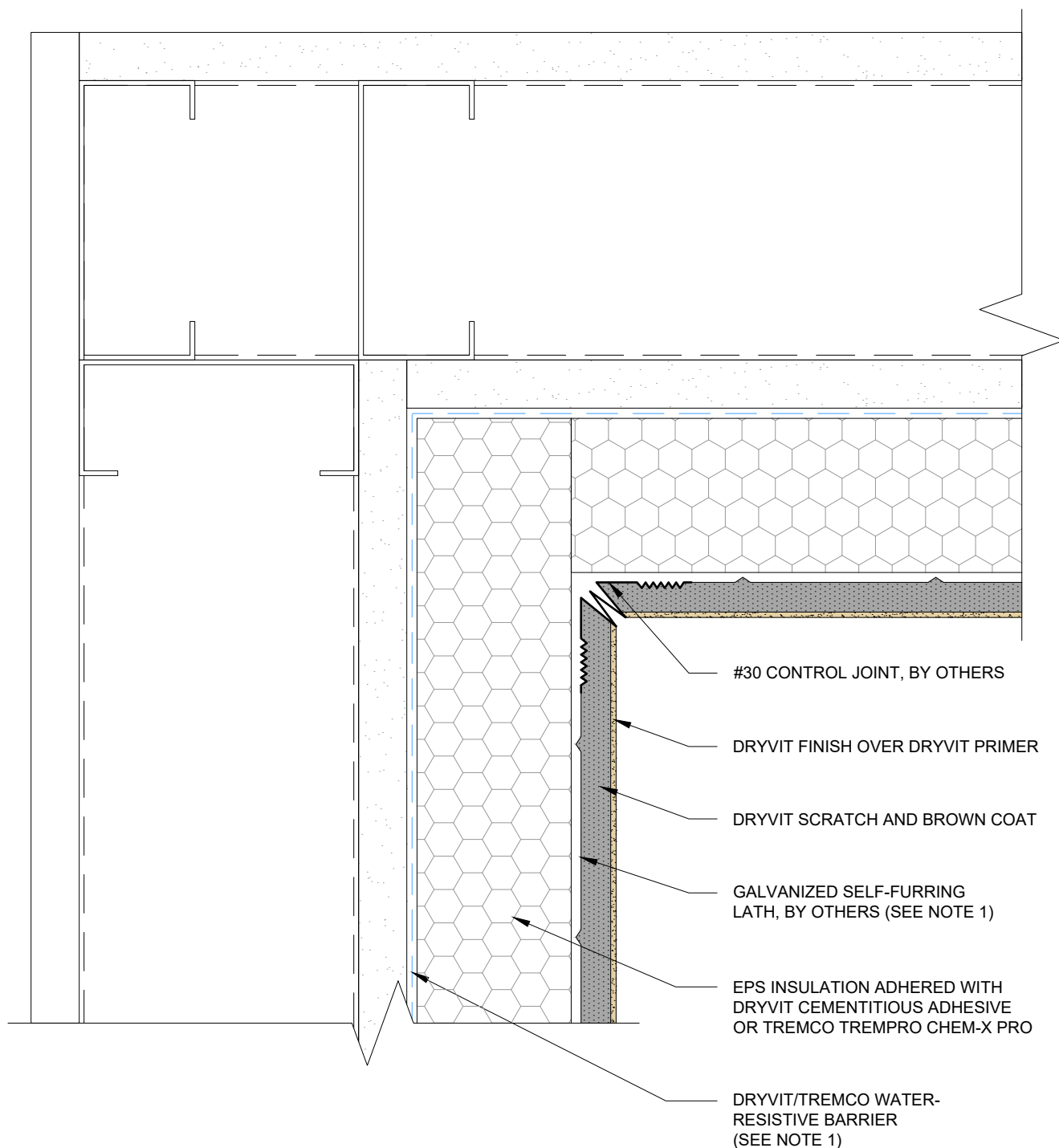


Dryvit Technical Support: 800-556-7752



Construction Products Group

www.tremcocpg.com



NOTES:

1. BUILDING CODES REQUIRE 2 LAYERS OVER WOOD BASED SUBSTRATES. COMPLY WITH ALL LOCAL CODE REQUIREMENTS.

This detail is for general informational purposes, only. The project design professional determines, in its sole discretion, whether this detail or a functionally equivalent detail is best suited for the project with respect to any architecture, engineering, and design requirements, including any local building code requirements. If this document is not reviewed and the product is not approved for use by a licensed design professional, the customer agrees that the detail may contain substantive flaws requiring correction, and hereby releases Tremco CPG Inc. from any and all liability related to the design and installation of the product. This detail is subject to change without notice. Contact Tremco to ensure you have the most recent version.

StucCoat 3-Coat with Continuous Insulation



Dryvit Technical Support: 800-556-7752

Detail: Inside Corner Control Joint

Drawn by: KAB

Checked by: AL

Scale: 6" = 1'-0"

Revision #: 00

Revised by: -

Date: 1/23/2025

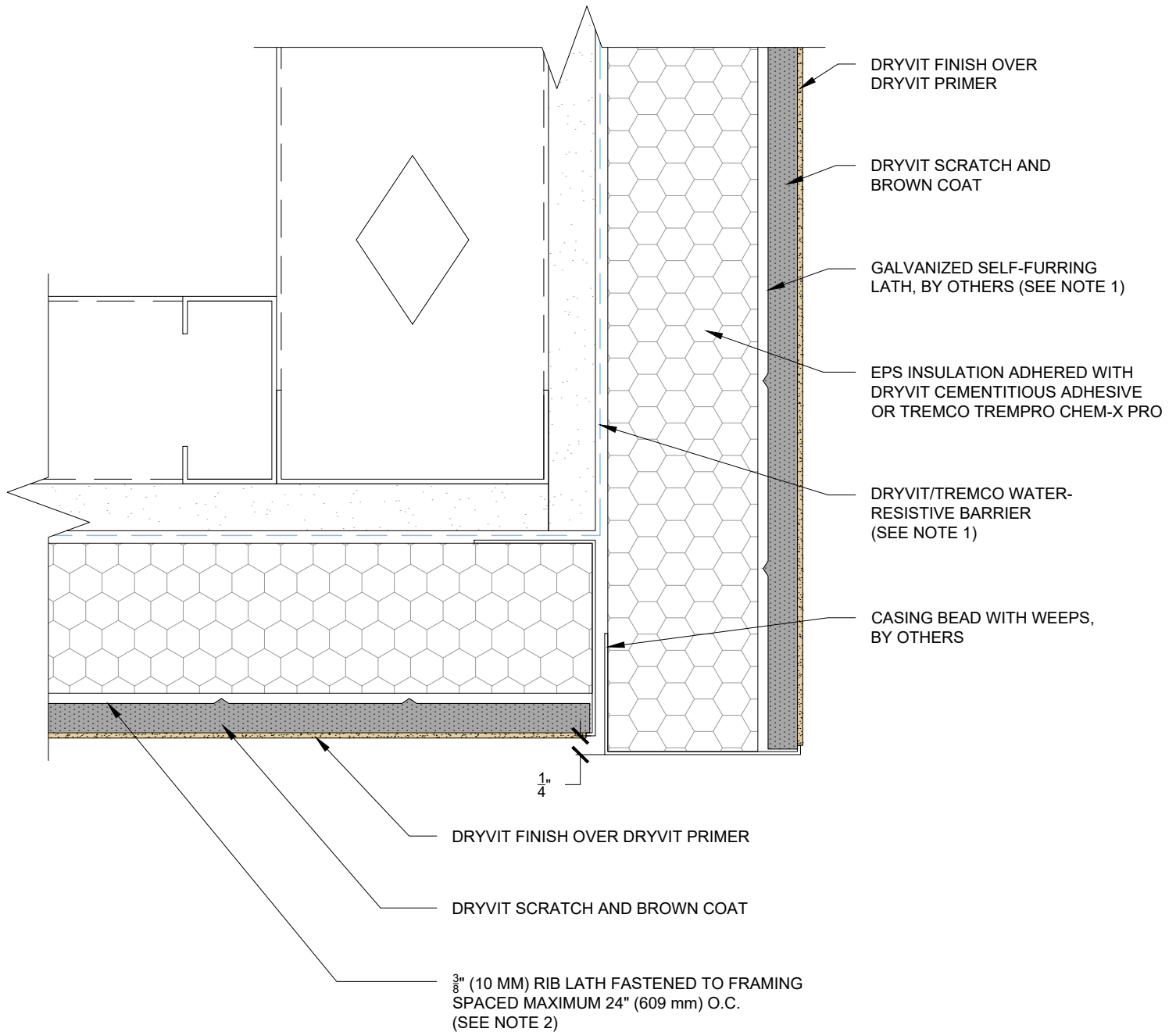
File Name:

SCTC-CI-11



Construction Products Group

www.tremcocpg.com



NOTES:

- BUILDING CODES REQUIRE 2 LAYERS OVER WOOD BASED SUBSTRATES. COMPLY WITH ALL LOCAL CODE REQUIREMENTS.
- FRAMING JOIST SPACED AT 24" (609 MM) REQUIRES 3/8" (10 MM) RIB LATH PERPENDICULAR TO JOISTS.

This detail is for general informational purposes, only. The project design professional determines, in its sole discretion, whether this detail or a functionally equivalent detail is best suited for the project with respect to any architecture, engineering, and design requirements, including any local building code requirements. If this document is not reviewed and the product is not approved for use by a licensed design professional, the customer agrees that the detail may contain substantive flaws requiring correction, and hereby releases Tremco CPG Inc. from any and all liability related to the design and installation of the product. This detail is subject to change without notice. Contact Tremco to ensure you have the most recent version.

StucCoat 3-Coat with Continuous Insulation

Detail: Soffit/Fascia Intersection

File Name:

Drawn by: KAB

Checked by: AL

Scale: 6" = 1'-0"

SCTC-CI-12

Revision #: 00

Revised by: -

Date: 1/23/2025

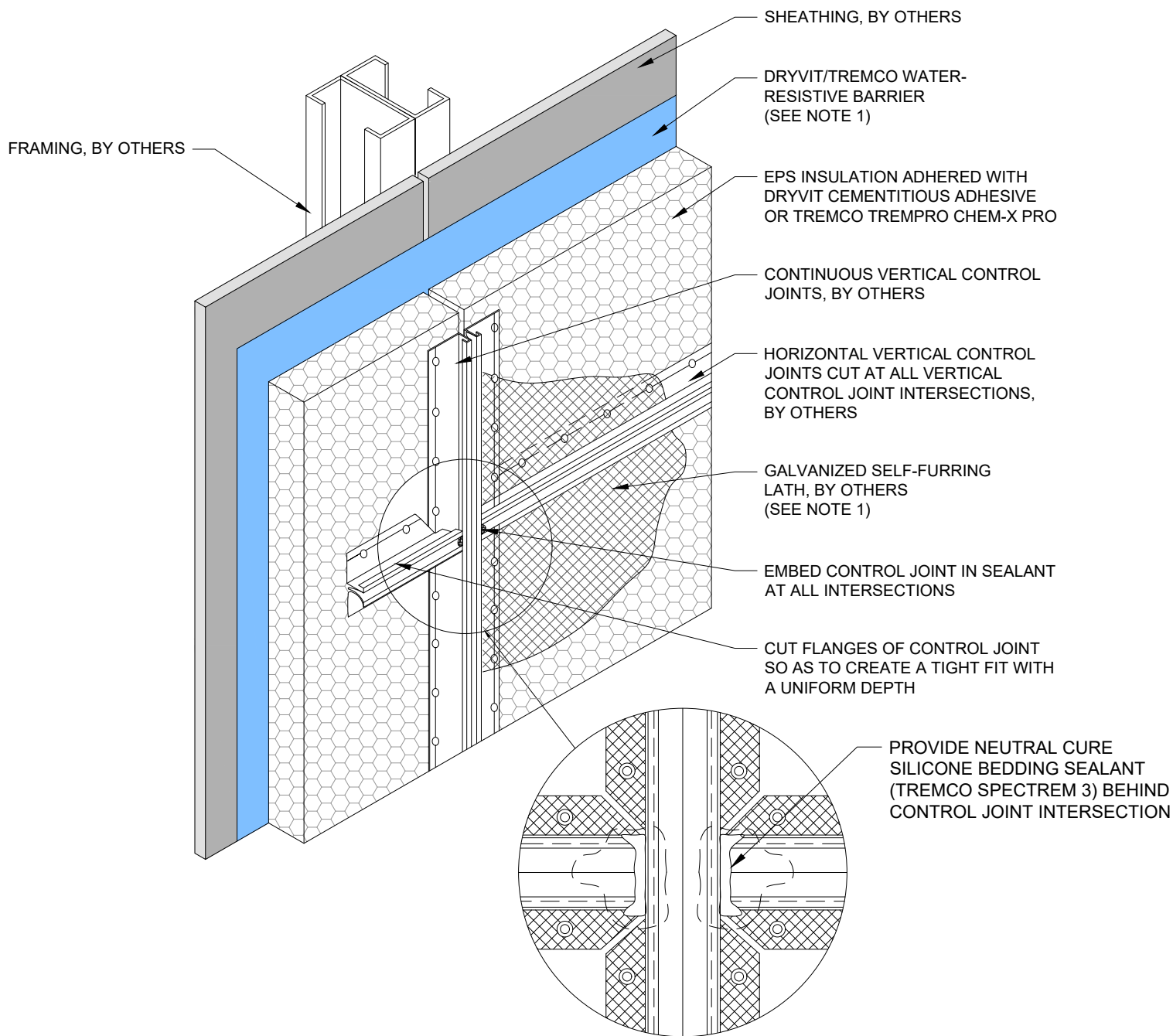
www.tremcocpg.com



Dryvit Technical Support: 800-556-7752



Construction Products Group



NOTES:

1. BUILDING CODES REQUIRE 2 LAYERS OVER WOOD BASED SUBSTRATES. COMPLY WITH ALL LOCAL CODE REQUIREMENTS.
2. LATH TO LAP OVER CONTROL JOINT FLANGES.
3. FRAMING BACKING IS REQUIRED AT ALL CONTROL JOINTS.

This detail is for general informational purposes, only. The project design professional determines, in its sole discretion, whether this detail or a functionally equivalent detail is best suited for the project with respect to any architecture, engineering, and design requirements, including any local building code requirements. If this document is not reviewed and the product is not approved for use by a licensed design professional, the customer agrees that the detail may contain substantive flaws requiring correction, and hereby releases Tremco CPG Inc. from any and all liability related to the design and installation of the product. This detail is subject to change without notice. Contact Tremco to ensure you have the most recent version.

StucCoat 3-Coat with Continuous Insulation

Detail: Expansion Joint Intersection

File Name:

Drawn by: KAB

Checked by: AL

Scale: NTS

SCTC-CI-13

Revision #: 00

Revised by: -

Date: 1/23/2025

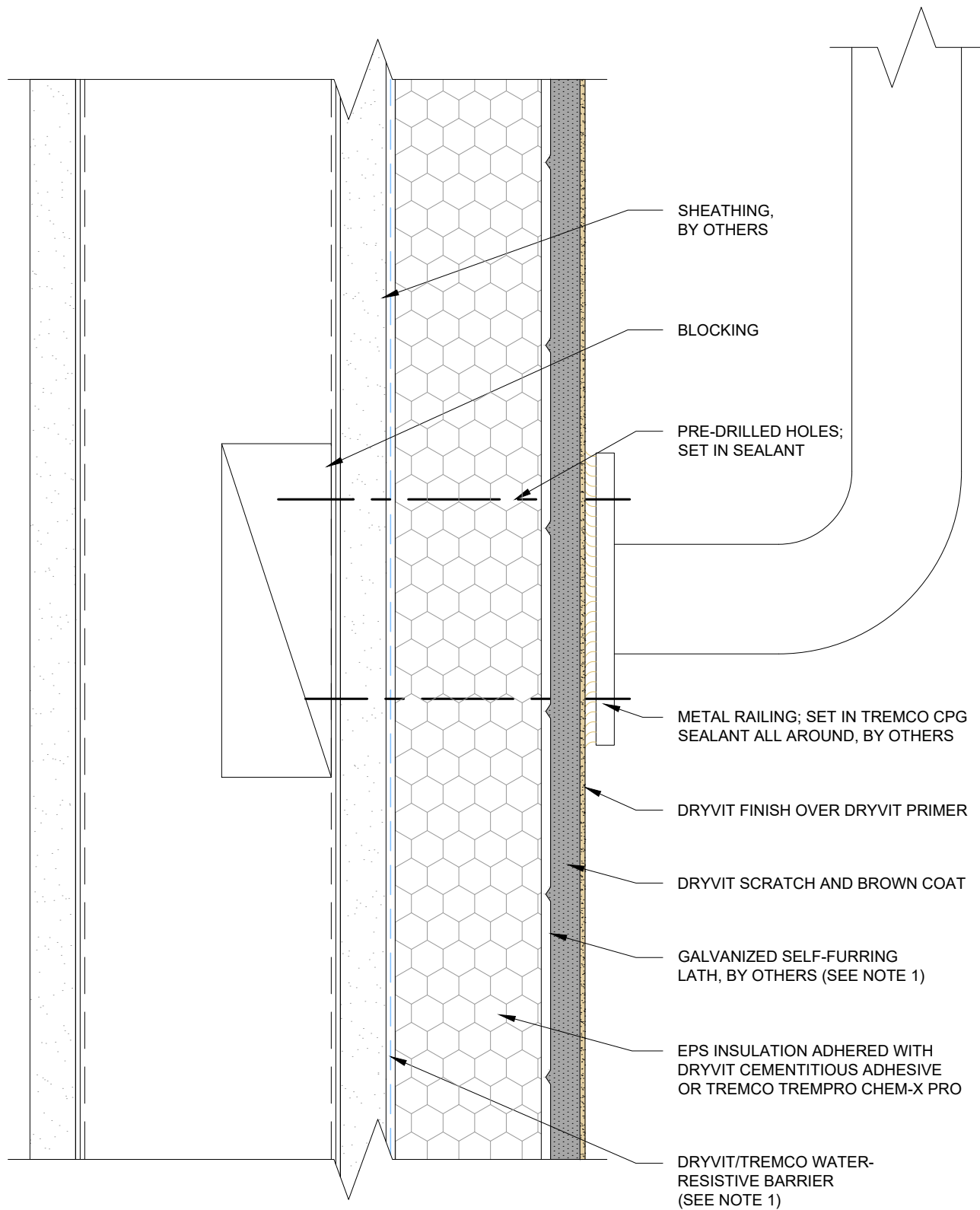
www.tremcocpg.com



Dryvit Technical Support: 800-556-7752



Construction Products Group



NOTES:

1. BUILDING CODES REQUIRE 2 LAYERS OVER WOOD BASED SUBSTRATES. COMPLY WITH ALL LOCAL CODE REQUIREMENTS.

This detail is for general informational purposes, only. The project design professional determines, in its sole discretion, whether this detail or a functionally equivalent detail is best suited for the project with respect to any architecture, engineering, and design requirements, including any local building code requirements. If this document is not reviewed and the product is not approved for use by a licensed design professional, the customer agrees that the detail may contain substantive flaws requiring correction, and hereby releases Tremco CPG Inc. from any and all liability related to the design and installation of the product. This detail is subject to change without notice. Contact Tremco to ensure you have the most recent version.

StucCoat 3-Coat with Continuous Insulation

Detail: Pipe Railing Attachment

File Name:

Drawn by: KAB

Checked by: AL

Scale: 6" = 1'-0"

SCTC-CI-14

Revision #: 00

Revised by: -

Date: 1/23/2025

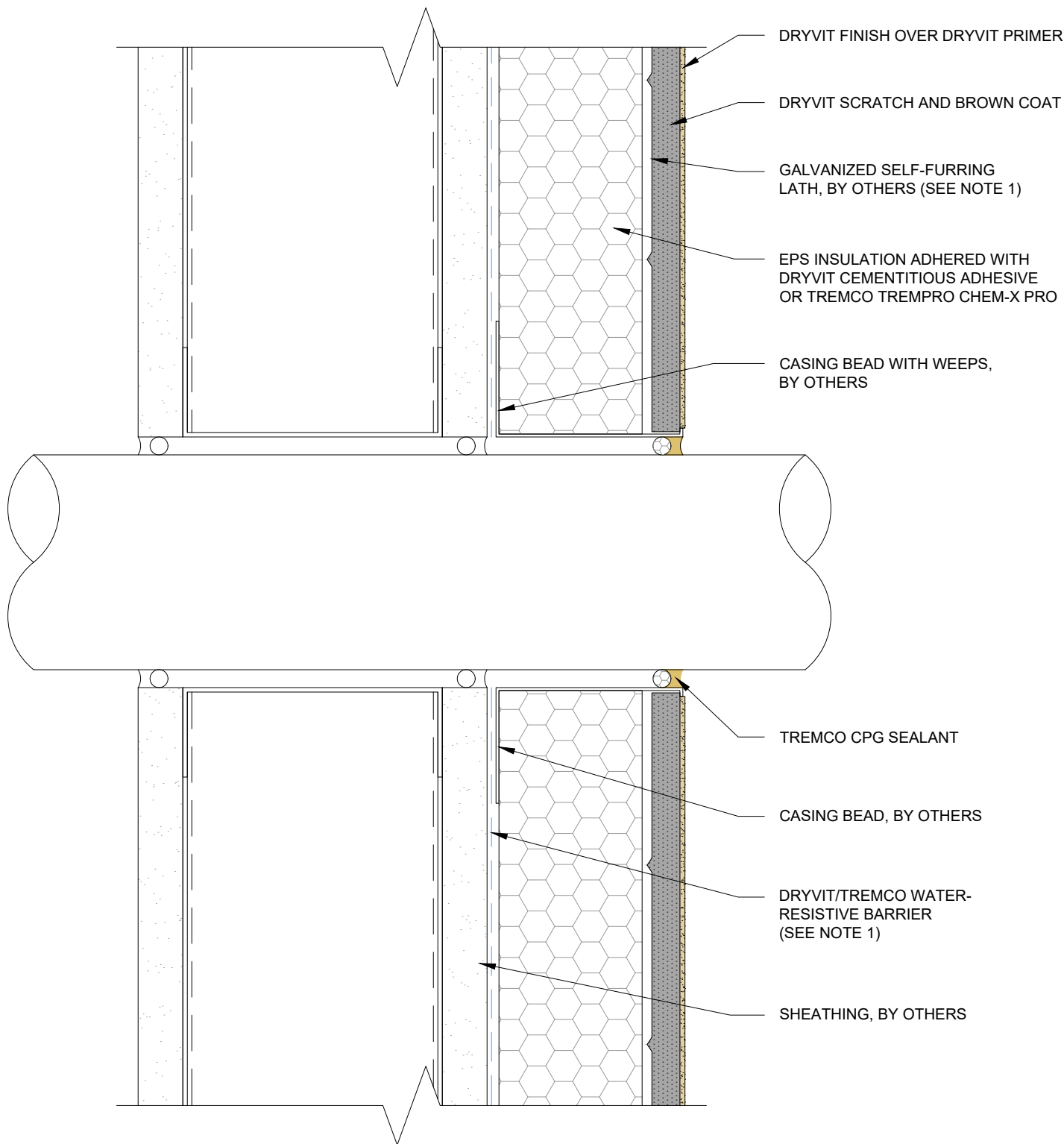
www.tremcocpg.com



Dryvit Technical Support: 800-556-7752



Construction Products Group





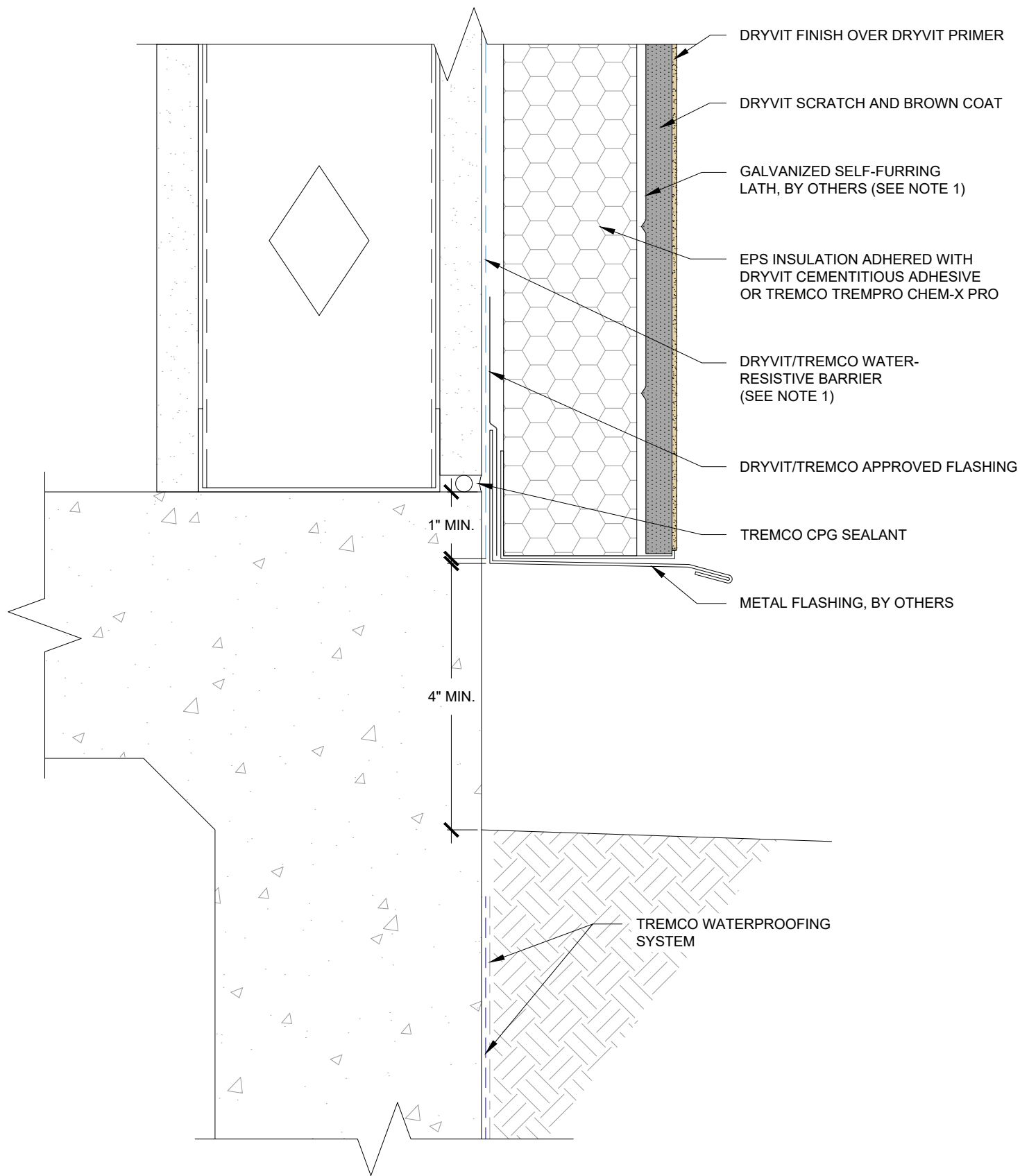
NOTES:

1. BUILDING CODES REQUIRE 2 LAYERS OVER WOOD BASED SUBSTRATES. COMPLY WITH ALL LOCAL CODE REQUIREMENTS.

This detail is for general informational purposes, only. The project design professional determines, in its sole discretion, whether this detail or a functionally equivalent detail is best suited for the project with respect to any architecture, engineering, and design requirements, including any local building code requirements. If this document is not reviewed and the product is not approved for use by a licensed design professional, the customer agrees that the detail may contain substantive flaws requiring correction, and hereby releases Tremco CPG Inc. from any and all liability related to the design and installation of the product. This detail is subject to change without notice. Contact Tremco to ensure you have the most recent version.

StucCoat 3-Coat with Continuous Insulation

 Dryvit Technical Support: 800-556-7752	Detail: Penetration			File Name:	 TREMCO Construction Products Group
	Drawn by: KAB	Checked by: AL	Scale: 6" = 1'-0"	SCTC-CI-15	
	Revision #: 00	Revised by: -	Date: 1/23/2025		
	www.tremcocpg.com				



NOTES:

1. BUILDING CODES REQUIRE 2 LAYERS OVER WOOD BASED SUBSTRATES. COMPLY WITH ALL LOCAL CODE REQUIREMENTS.

This detail is for general informational purposes, only. The project design professional determines, in its sole discretion, whether this detail or a functionally equivalent detail is best suited for the project with respect to any architecture, engineering, and design requirements, including any local building code requirements. If this document is not reviewed and the product is not approved for use by a licensed design professional, the customer agrees that the detail may contain substantive flaws requiring correction, and hereby releases Tremco CPG Inc. from any and all liability related to the design and installation of the product. This detail is subject to change without notice. Contact Tremco to ensure you have the most recent version.

StucCoat 3-Coat with Continuous Insulation

Detail: Termination at Concrete Foundation

File Name:

Drawn by: KAB

Checked by: AL

Scale: 6" = 1'-0"

SCTC-CI-16

Revision #: 00

Revised by: -

Date: 1/23/2025

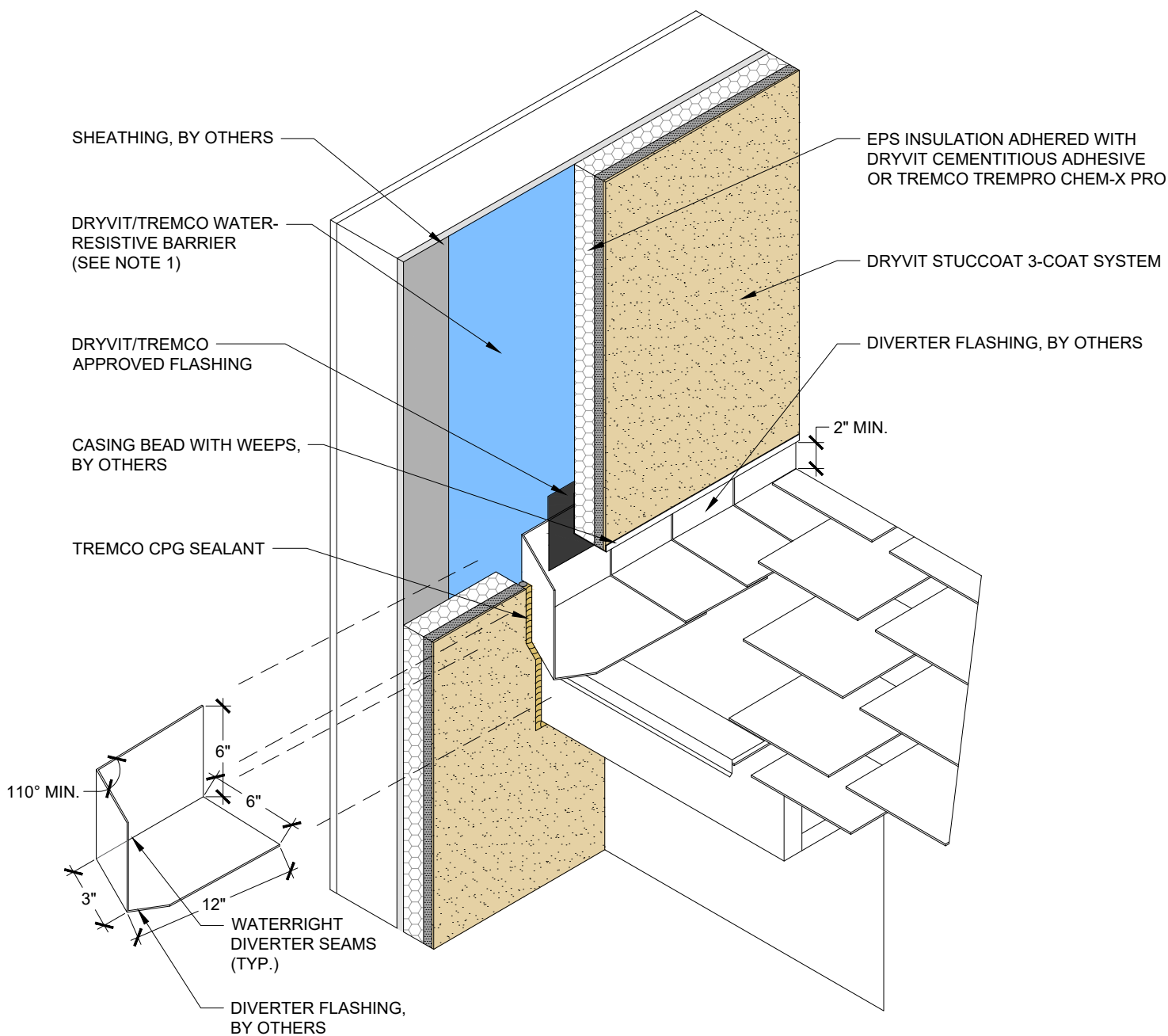
www.tremcocpg.com



Dryvit Technical Support: 800-556-7752



Construction Products Group





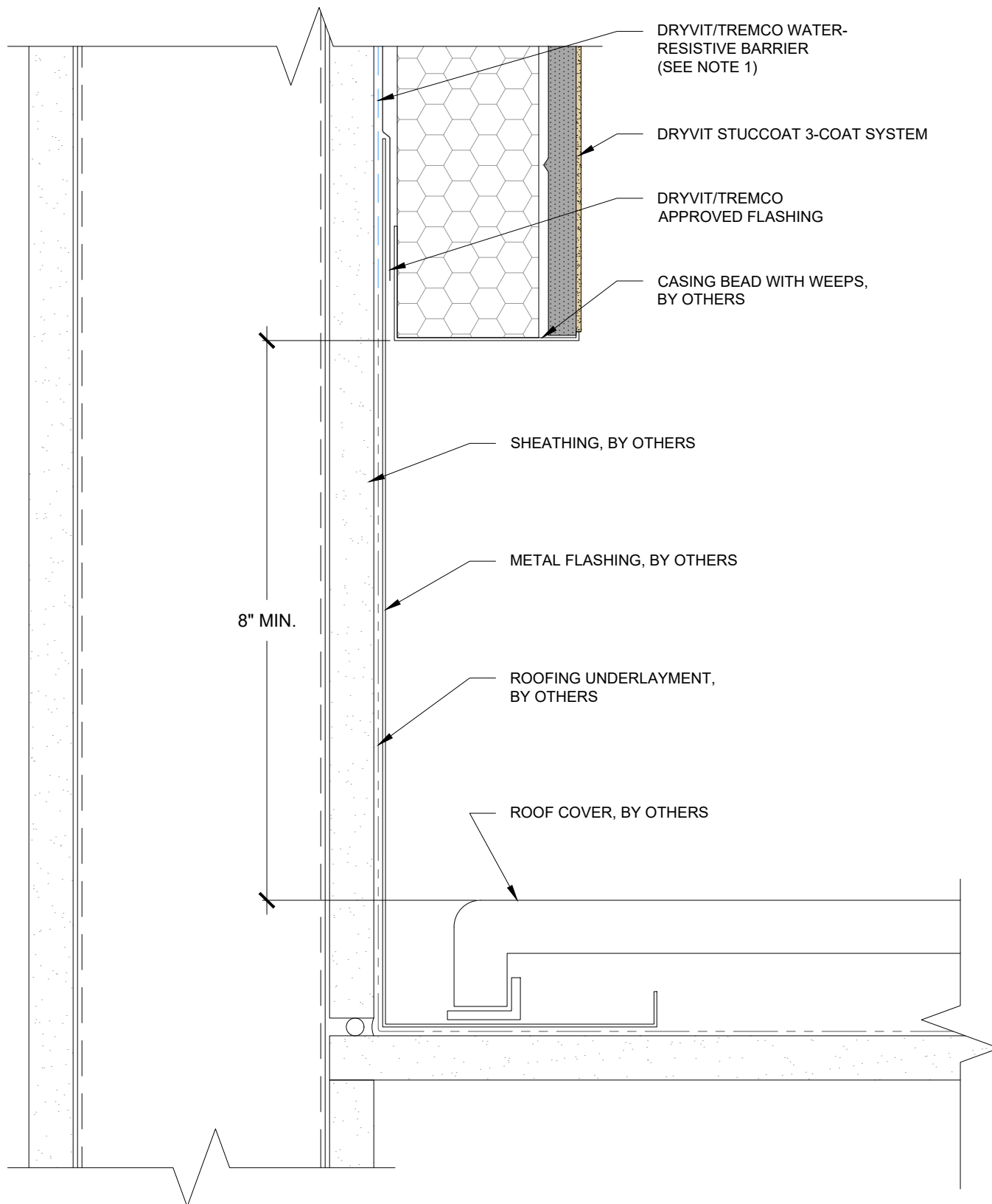
NOTES:

1. BUILDING CODES REQUIRE 2 LAYERS OVER WOOD BASED SUBSTRATES. COMPLY WITH ALL LOCAL CODE REQUIREMENTS.

This detail is for general informational purposes, only. The project design professional determines, in its sole discretion, whether this detail or a functionally equivalent detail is best suited for the project with respect to any architecture, engineering, and design requirements, including any local building code requirements. If this document is not reviewed and the product is not approved for use by a licensed design professional, the customer agrees that the detail may contain substantive flaws requiring correction, and hereby releases Tremco CPG Inc. from any and all liability related to the design and installation of the product. This detail is subject to change without notice. Contact Tremco to ensure you have the most recent version.

StucCoat 3-Coat with Continuous Insulation

 Dryvit Technical Support: 800-556-7752	Detail: Termination at Roof/Wall Intersection			File Name:
	Drawn by: KAB	Checked by: AL	Scale: NTS	SCTC-CI-17
	Revision #: 00	Revised by: -	Date: 1/23/2025	
	www.tremcocpg.com			
				 Construction Products Group



NOTES:

1. BUILDING CODES REQUIRE 2 LAYERS OVER WOOD BASED SUBSTRATES. COMPLY WITH ALL LOCAL CODE REQUIREMENTS.

This detail is for general informational purposes, only. The project design professional determines, in its sole discretion, whether this detail or a functionally equivalent detail is best suited for the project with respect to any architecture, engineering, and design requirements, including any local building code requirements. If this document is not reviewed and the product is not approved for use by a licensed design professional, the customer agrees that the detail may contain substantive flaws requiring correction, and hereby releases Tremco CPG Inc. from any and all liability related to the design and installation of the product. This detail is subject to change without notice. Contact Tremco to ensure you have the most recent version.

StucCoat 3-Coat with Continuous Insulation

Detail: Termination at Roof/Wall Intersection - Flat Roof

File Name:

Drawn by: KAB

Checked by: AL

Scale: 6" = 1'-0"

SCTC-CI-18

Revision #: 00

Revised by: -

Date: 1/23/2025

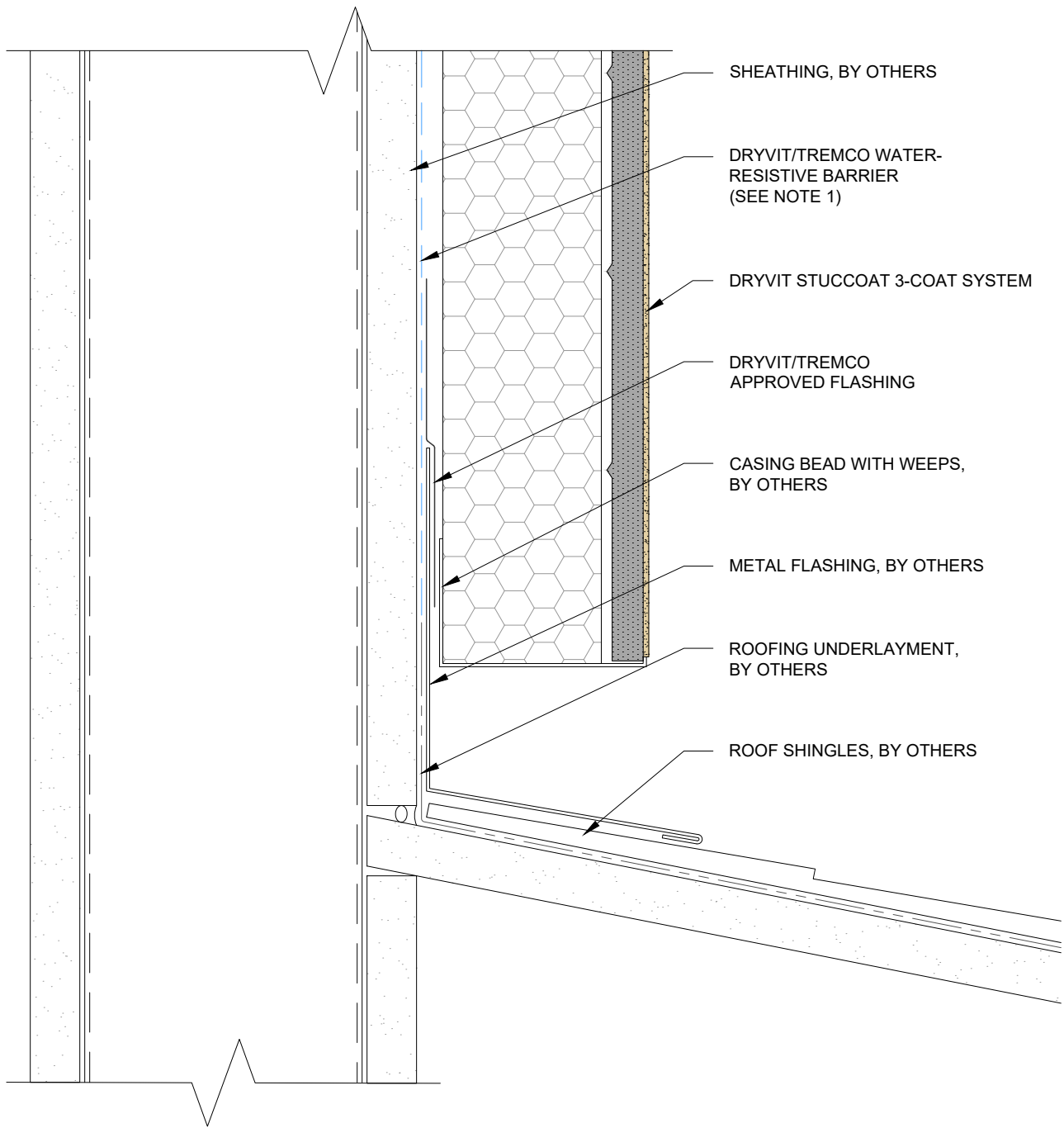
www.tremcocpg.com



Dryvit Technical Support: 800-556-7752



Construction Products Group



NOTES:

1. BUILDING CODES REQUIRE 2 LAYERS OVER WOOD BASED SUBSTRATES. COMPLY WITH ALL LOCAL CODE REQUIREMENTS.

This detail is for general informational purposes, only. The project design professional determines, in its sole discretion, whether this detail or a functionally equivalent detail is best suited for the project with respect to any architecture, engineering, and design requirements, including any local building code requirements. If this document is not reviewed and the product is not approved for use by a licensed design professional, the customer agrees that the detail may contain substantive flaws requiring correction, and hereby releases Tremco CPG Inc. from any and all liability related to the design and installation of the product. This detail is subject to change without notice. Contact Tremco to ensure you have the most recent version.

StucCoat 3-Coat with Continuous Insulation

Detail: Termination at Roof/Wall Intersection - Shingled Roof

File Name:

Drawn by: KAB

Checked by: AL

Scale: 6" = 1'-0"

SCTC-CI-19

Revision #: 00

Revised by: -

Date: 1/23/2025

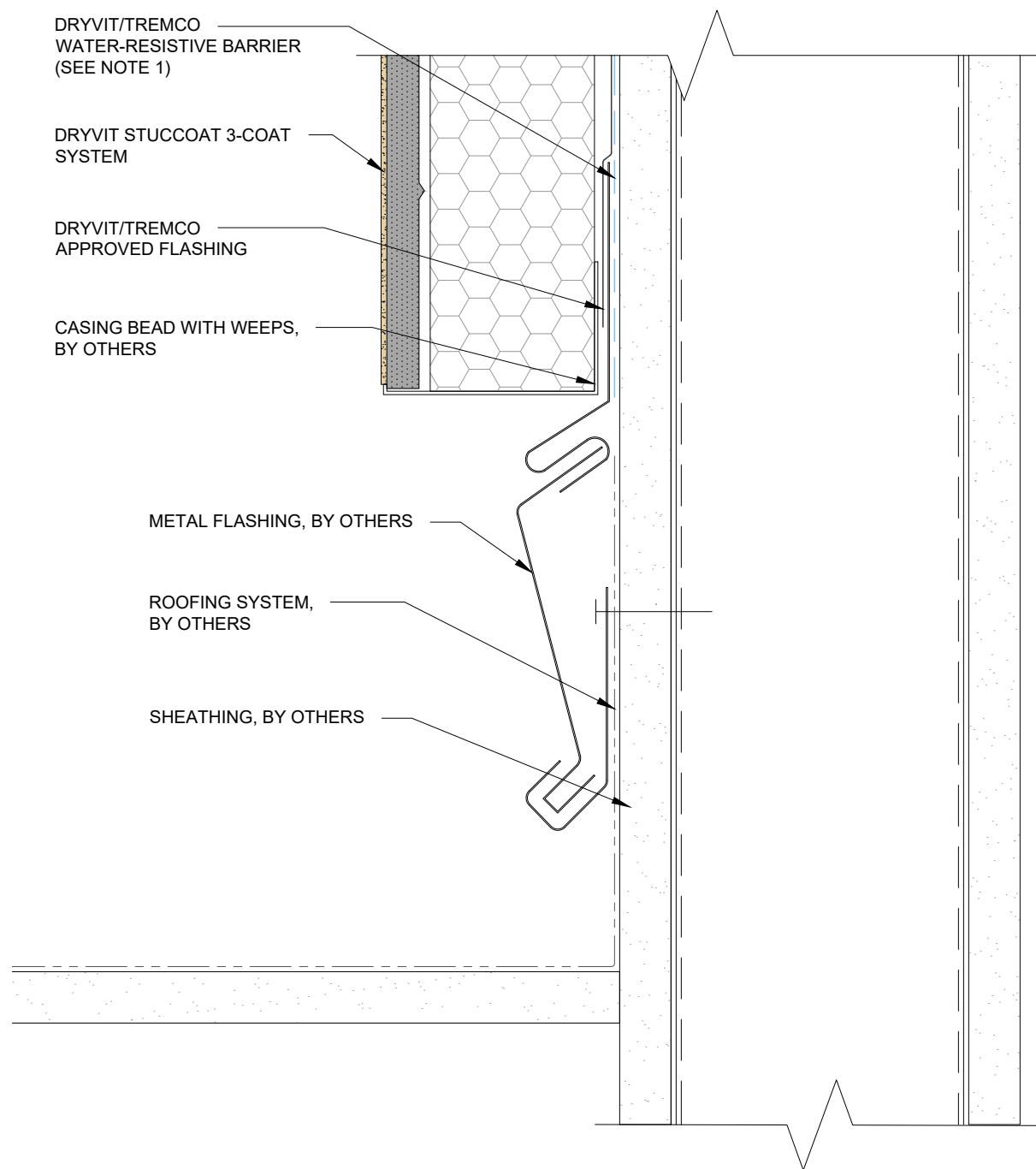
www.tremcocpg.com



Dryvit Technical Support: 800-556-7752



Construction Products Group





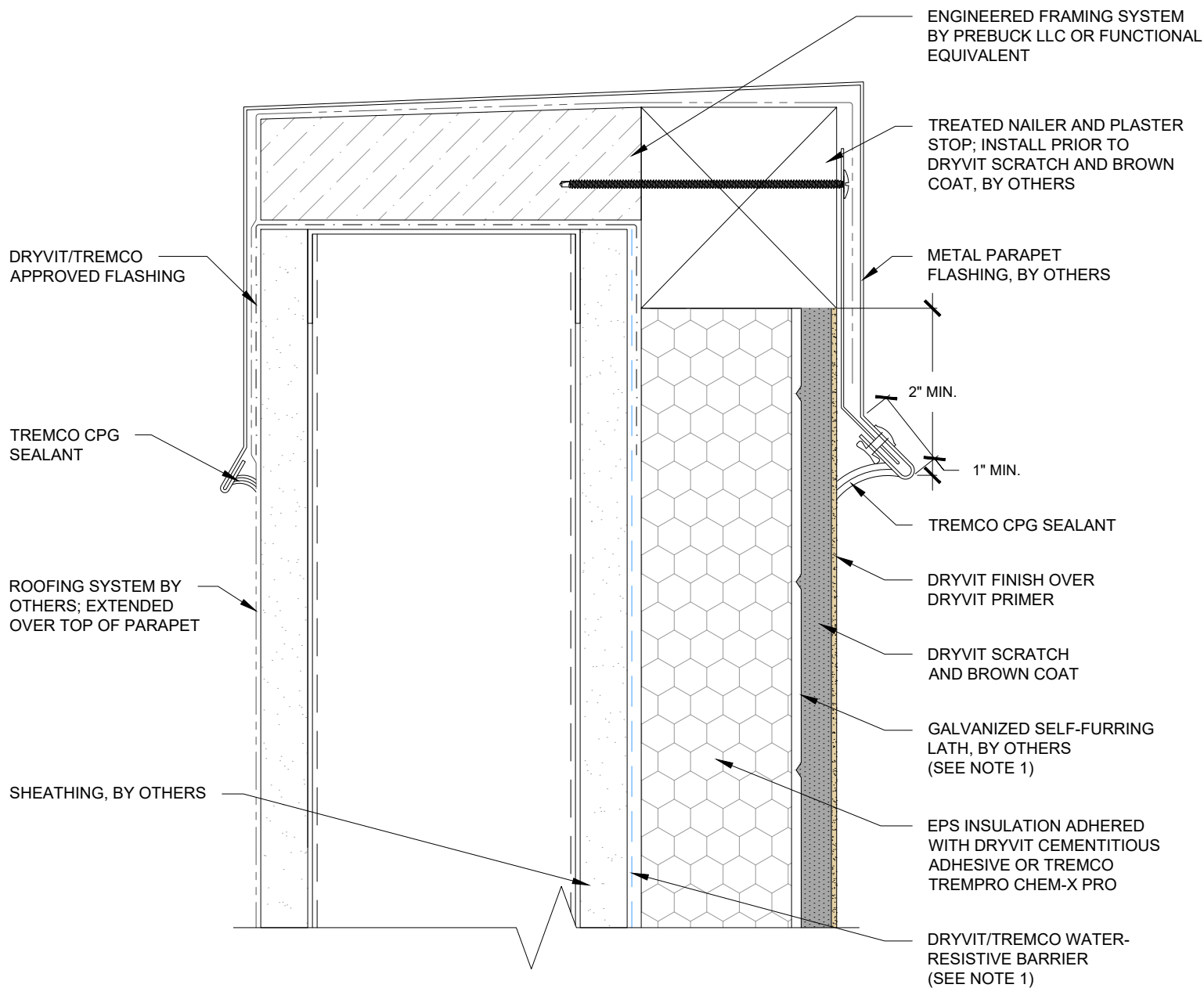
NOTES:

1. BUILDING CODES REQUIRE 2 LAYERS OVER WOOD BASED SUBSTRATES. COMPLY WITH ALL LOCAL CODE REQUIREMENTS.

This detail is for general informational purposes, only. The project design professional determines, in its sole discretion, whether this detail or a functionally equivalent detail is best suited for the project with respect to any architecture, engineering, and design requirements, including any local building code requirements. If this document is not reviewed and the product is not approved for use by a licensed design professional, the customer agrees that the detail may contain substantive flaws requiring correction, and hereby releases Tremco CPG Inc. from any and all liability related to the design and installation of the product. This detail is subject to change without notice. Contact Tremco to ensure you have the most recent version.

StucCoat 3-Coat with Continuous Insulation

 Dryvit Technical Support: 800-556-7752	Detail: Termination at Parapet/Wall Intersection			File Name:	 Construction Products Group
	Drawn by: KAB	Checked by: AL	Scale: 6" = 1'-0"	SCTC-CI-20	
	Revision #: 00	Revised by: -	Date: 1/23/2025		
	www.tremcocpa.com				

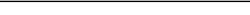
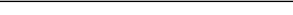


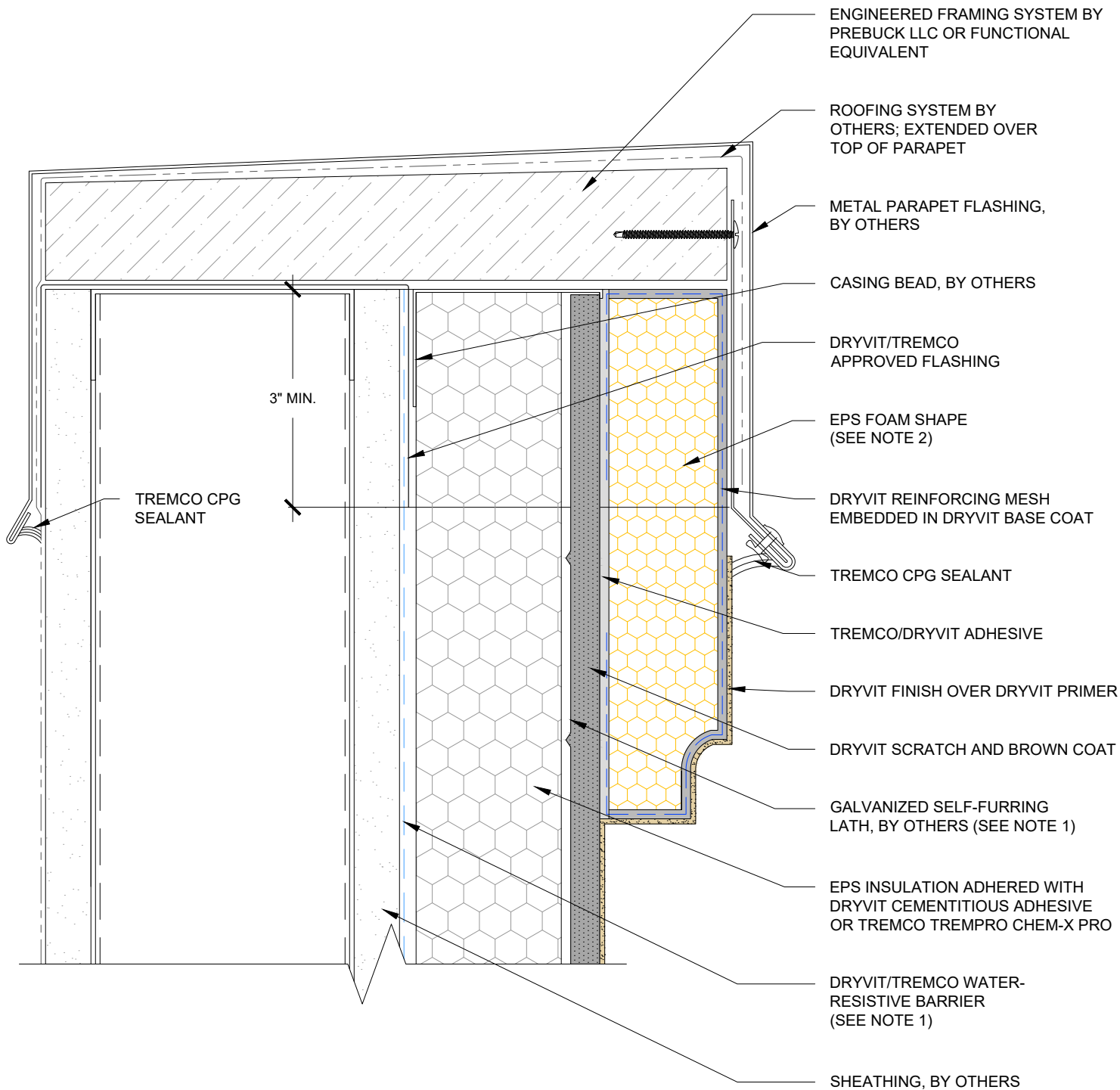
NOTES:

1. BUILDING CODES REQUIRE 2 LAYERS OVER WOOD BASED SUBSTRATES. COMPLY WITH ALL LOCAL CODE REQUIREMENTS.

This detail is for general informational purposes, only. The project design professional determines, in its sole discretion, whether this detail or a functionally equivalent detail is best suited for the project with respect to any architecture, engineering, and design requirements, including any local building code requirements. If this document is not reviewed and the product is not approved for use by a licensed design professional, the customer agrees that the detail may contain substantive flaws requiring correction, and hereby releases Tremco CPG Inc. from any and all liability related to the design and installation of the product. This detail is subject to change without notice. Contact Tremco to ensure you have the most recent version.

StucCoat 3-Coat with Continuous Insulation

 Dryvit Technical Support: 800-556-7752	Detail: Parapet Flashing			File Name:
	Drawn by: KAB	Checked by: 6" = 1'-0"	Scale: NTS	SCTC-CI-21
	Revision #: 00	Revised by: -	Date: 1/23/2025	
	www.tremcocpg.com			
				 Construction Products Group



NOTES:

1. BUILDING CODES REQUIRE 2 LAYERS OVER WOOD BASED SUBSTRATES. COMPLY WITH ALL LOCAL CODE REQUIREMENTS.
2. REFERENCE DS854 FOR APPLICATION OF FOAM SHAPES.

This detail is for general informational purposes, only. The project design professional determines, in its sole discretion, whether this detail or a functionally equivalent detail is best suited for the project with respect to any architecture, engineering, and design requirements, including any local building code requirements. If this document is not reviewed and the product is not approved for use by a licensed design professional, the customer agrees that the detail may contain substantive flaws requiring correction, and hereby releases Tremco CPG Inc. from any and all liability related to the design and installation of the product. This detail is subject to change without notice. Contact Tremco to ensure you have the most recent version.

StucCoat 3-Coat with Continuous Insulation



Dryvit Technical Support: 800-556-7752

Detail: EPS Cornice

Drawn by: KAB

Revision #: 00

Checked by: 6" = 1'-0"

Revised by: -

Scale: NTS

Date: 1/23/2025

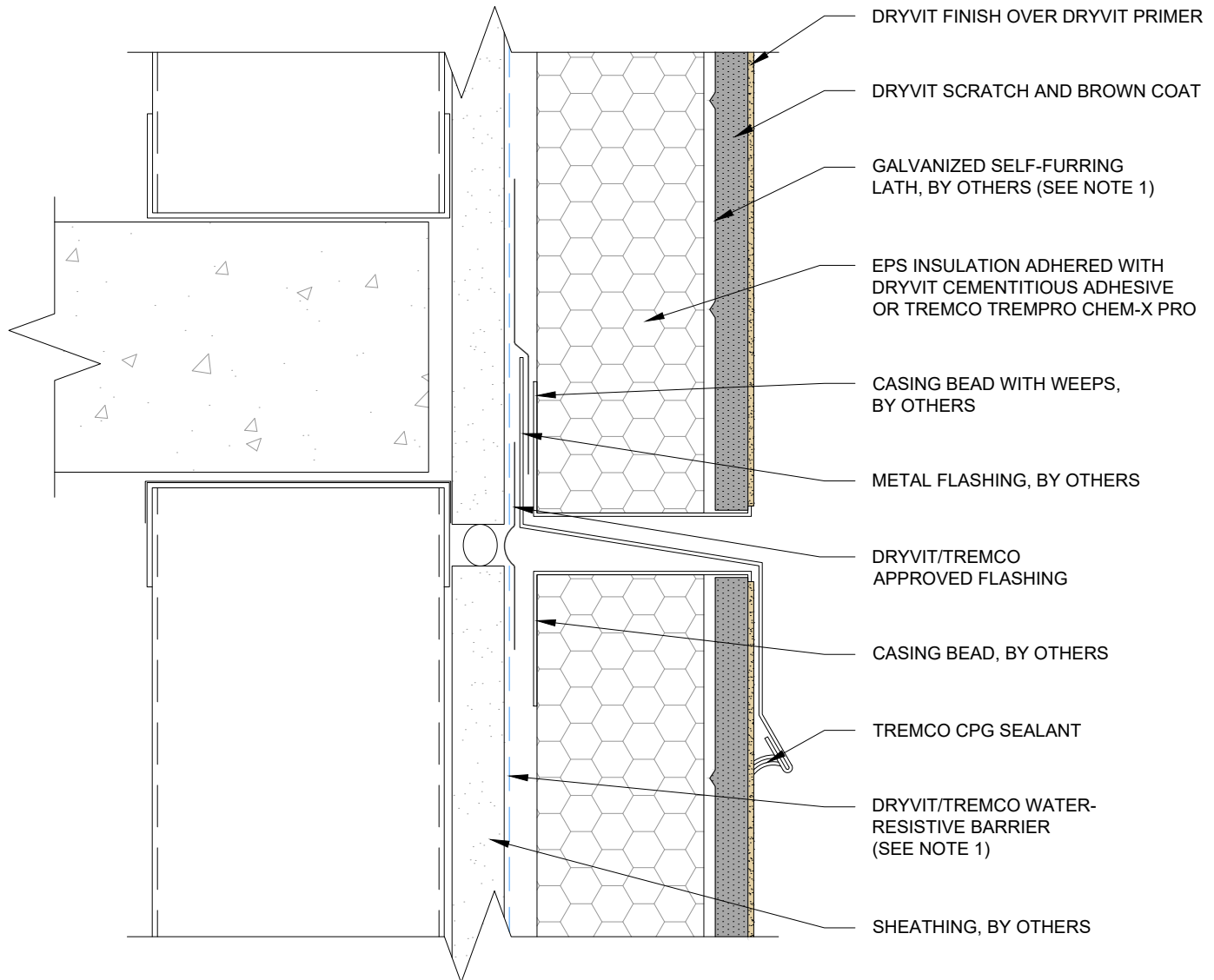
File Name:

SCTC-CI-22



Construction Products Group

www.tremcocpg.com



NOTES:

1. BUILDING CODES REQUIRE 2 LAYERS OVER WOOD BASED SUBSTRATES. COMPLY WITH ALL LOCAL CODE REQUIREMENTS.

This detail is for general informational purposes, only. The project design professional determines, in its sole discretion, whether this detail or a functionally equivalent detail is best suited for the project with respect to any architecture, engineering, and design requirements, including any local building code requirements. If this document is not reviewed and the product is not approved for use by a licensed design professional, the customer agrees that the detail may contain substantive flaws requiring correction, and hereby releases Tremco CPG Inc. from any and all liability related to the design and installation of the product. This detail is subject to change without notice. Contact Tremco to ensure you have the most recent version.

StucCoat 3-Coat with Continuous Insulation

Detail: Horizontal Flashing and Expansion Joint

File Name:

Drawn by: KAB

Checked by: 6" = 1'-0"

Scale: NTS

SCTC-CI-23

Revision #: 00

Revised by: -

Date: 1/23/2025

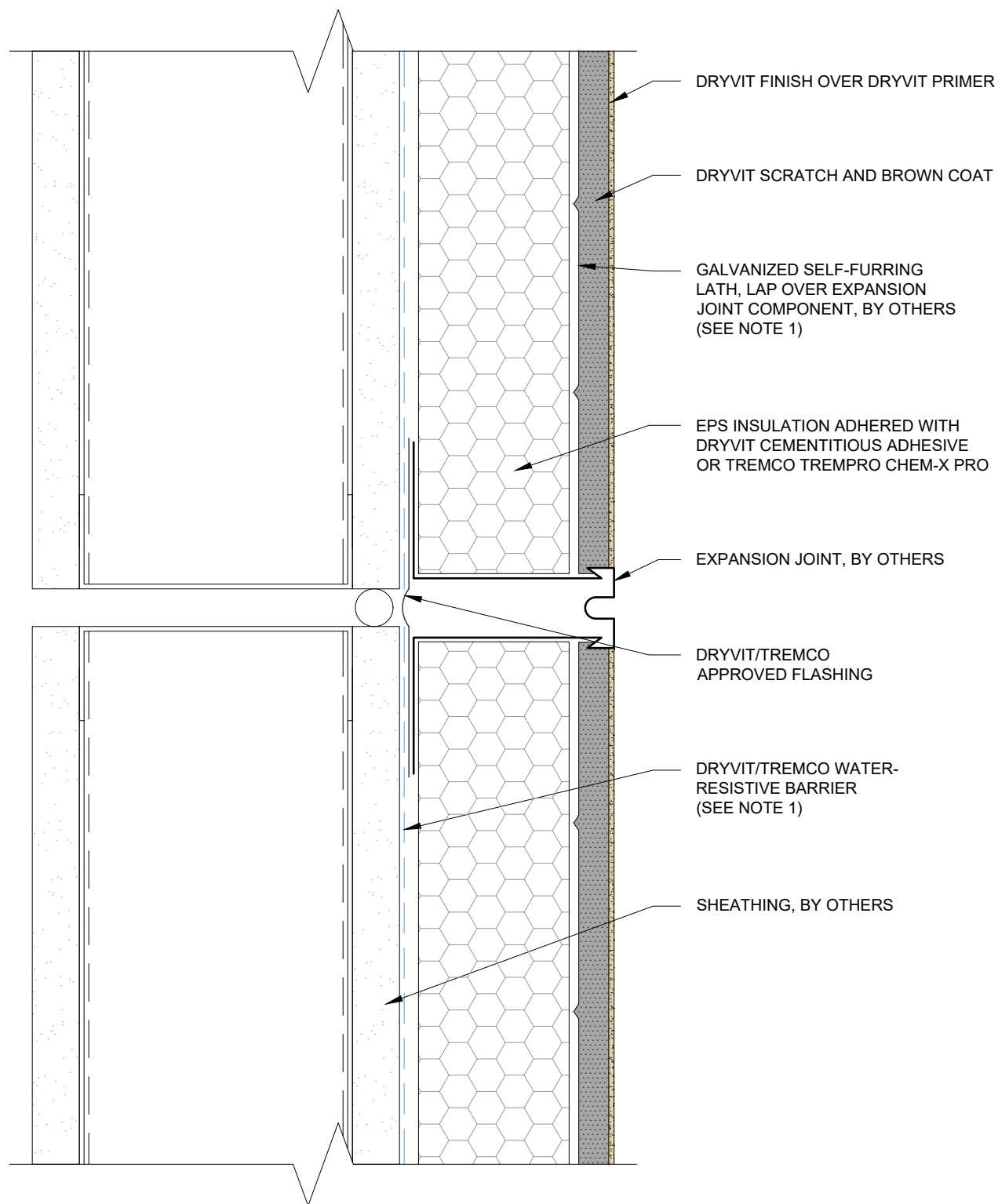
www.tremcocpg.com



Dryvit Technical Support: 800-556-7752



Construction Products Group



NOTES:

1. BUILDING CODES REQUIRE 2 LAYERS OVER WOOD BASED SUBSTRATES. COMPLY WITH ALL LOCAL CODE REQUIREMENTS.

This detail is for general informational purposes, only. The project design professional determines, in its sole discretion, whether this detail or a functionally equivalent detail is best suited for the project with respect to any architecture, engineering, and design requirements, including any local building code requirements. If this document is not reviewed and the product is not approved for use by a licensed design professional, the customer agrees that the detail may contain substantive flaws requiring correction, and hereby releases Tremco CPG Inc. from any and all liability related to the design and installation of the product. This detail is subject to change without notice. Contact Tremco to ensure you have the most recent version.

StucCoat 3-Coat with Continuous Insulation

Detail: Horizontal Expansion Joint

File Name:

Drawn by: KAB

Checked by: 6" = 1'-0"

Scale: NTS

Revision #: 00

Revised by: -

Date: 1/23/2025

SCTC-CI-24

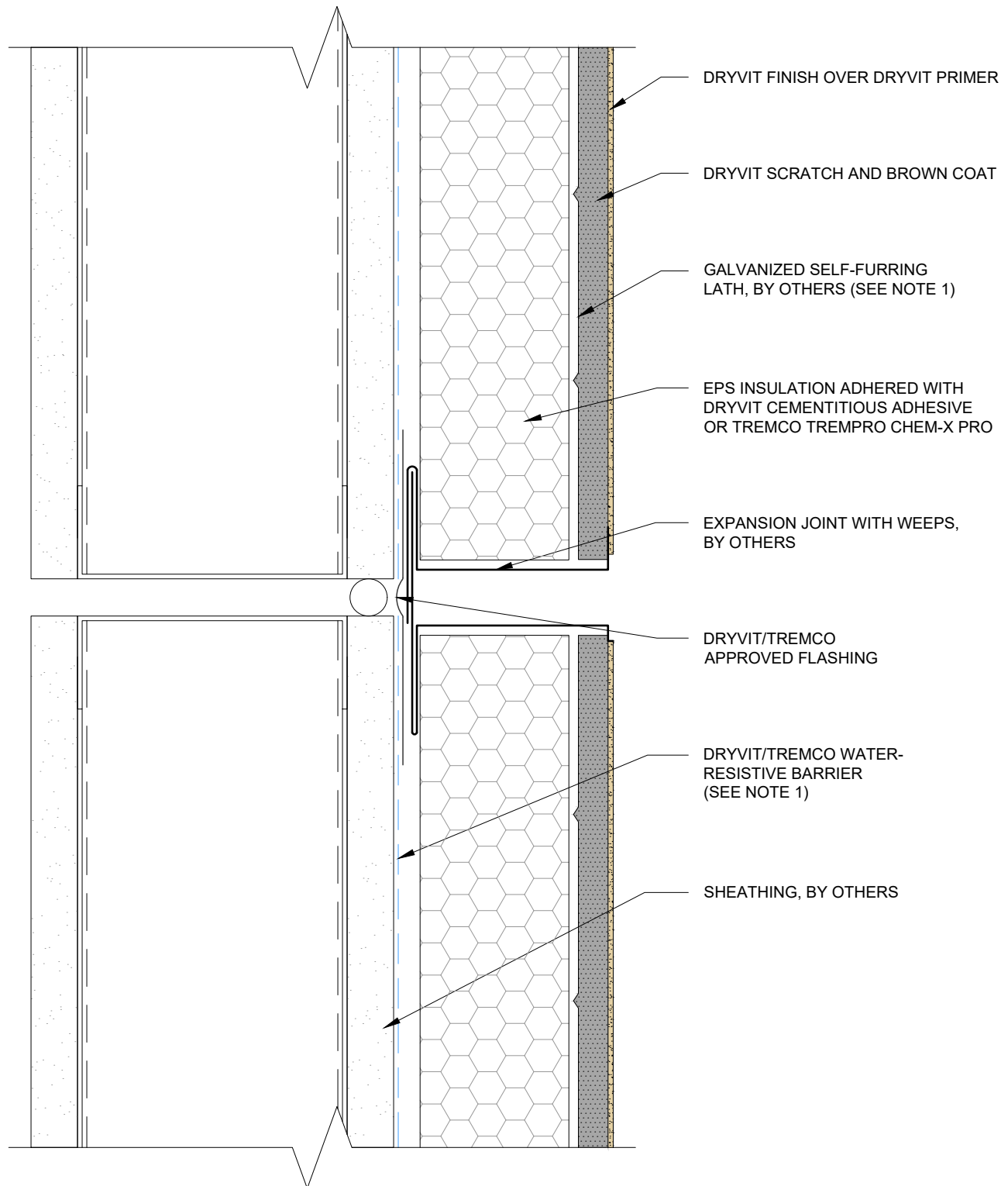


Dryvit Technical Support: 800-556-7752

www.tremcocpg.com



Construction Products Group



NOTES:

1. BUILDING CODES REQUIRE 2 LAYERS OVER WOOD BASED SUBSTRATES. COMPLY WITH ALL LOCAL CODE REQUIREMENTS.

This detail is for general informational purposes, only. The project design professional determines, in its sole discretion, whether this detail or a functionally equivalent detail is best suited for the project with respect to any architecture, engineering, and design requirements, including any local building code requirements. If this document is not reviewed and the product is not approved for use by a licensed design professional, the customer agrees that the detail may contain substantive flaws requiring correction, and hereby releases Tremco CPG Inc. from any and all liability related to the design and installation of the product. This detail is subject to change without notice. Contact Tremco to ensure you have the most recent version.

StucCoat 3-Coat with Continuous Insulation

Detail: Two Piece Horizontal Expansion Joint

File Name:

Drawn by: KAB

Checked by: 6" = 1'-0"

Scale: NTS

SCTC-CI-25

Revision #: 00

Revised by: -

Date: 1/23/2025

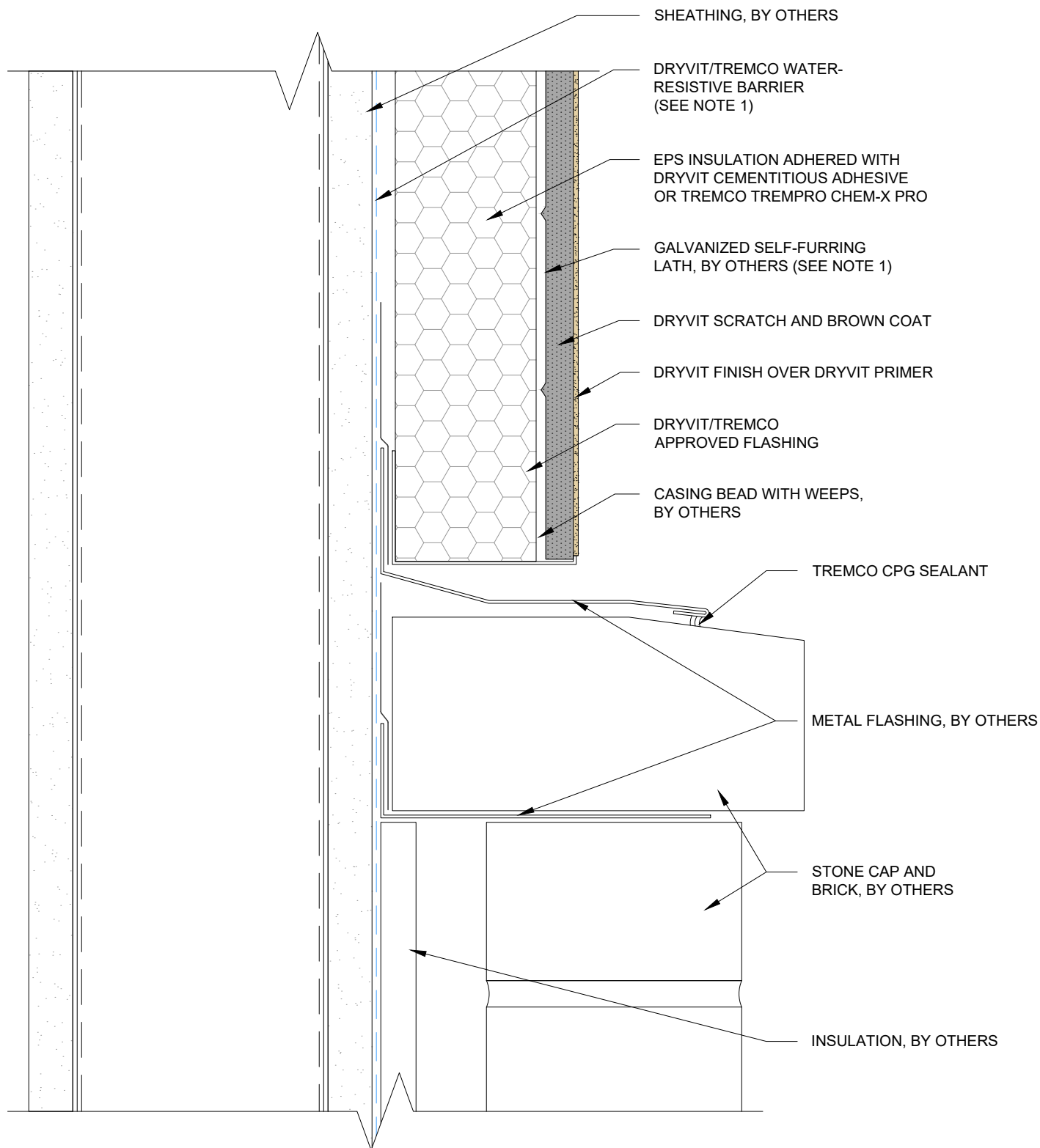
www.tremcocpg.com



Dryvit Technical Support: 800-556-7752



Construction Products Group



NOTES:

1. BUILDING CODES REQUIRE 2 LAYERS OVER WOOD BASED SUBSTRATES. COMPLY WITH ALL LOCAL CODE REQUIREMENTS.

This detail is for general informational purposes, only. The project design professional determines, in its sole discretion, whether this detail or a functionally equivalent detail is best suited for the project with respect to any architecture, engineering, and design requirements, including any local building code requirements. If this document is not reviewed and the product is not approved for use by a licensed design professional, the customer agrees that the detail may contain substantive flaws requiring correction, and hereby releases Tremco CPG Inc. from any and all liability related to the design and installation of the product. This detail is subject to change without notice. Contact Tremco to ensure you have the most recent version.

StucCoat 3-Coat with Continuous Insulation

Detail: Horizontal Termination at Brick Wall

File Name:

Drawn by: KAB

Checked by: 6" = 1'-0"

Scale: NTS

SCTC-CI-26

Revision #: 00

Revised by: -

Date: 1/23/2025

www.tremcocpg.com



Dryvit Technical Support: 800-556-7752



Construction Products Group