

A Fire-Rated, Stucco System Assembly for Residential and Commercial Buildings
with Insulated and Crack-Resistant (CRS) Optional Components

**StucCoat One Coat System
Installation Details**

Table of Contents

Detail

STUCCOAT ONE COAT SYSTEM	SCOC 1
BOARD JOINT AND FASTENER TREATMENT	SCOC 2
OPENING PREPARATION-	SCOC 3
AQUAFLASH® SYSTEM OR	
EXOAIR 230 WITH MESH	
OPENING PREPARATION -	SCOC 4
DYMONIC 100, BACKSTOP FLASH AND FILL,	
OR EXOAIR DUALFLASH	
OPENING PREPARATION -	SCOC 5
BACKSTOP NTX OR EXOAIR 230	
OPENING PREPARATION -	SCOC 6
EXOAIR 110AT	
OPENING FLASHING INTEGRATION -	SCOC 7
AQUAFLASH SYSTEM OR EXOAIR 230	
OPENING FLASHING INTEGRATION -	SCOC 8
DYMONIC 100, BACKSTOP FLASH AND FILL,	
OR EXOAIR DUALFLASH	
OPENING FLASHING INTEGRATION -	SCOC 9
EXOAIR 110AT	
FLANGED WINDOW HEAD	SCOC 10
FLANGED WINDOW JAMB	SCOC 11
FLANGED WINDOW SILL	SCOC 12
OUTSIDE CORNER	SCOC 13
INSIDE CORNER	SCOC 14
PENETRATION	SCOC 15
HORIZONTAL FLASHING AND EXPANSION JOINT	SCOC 16
TERMINATION AT PARAPET - CAP FLASHING	SCOC 17
TERMINATION AT ROOF/WALL INTERSECTION	SCOC 18
HORIZONTAL TERMINATION AT STONE VENEER	SCOC 19
TERMINATION AT WOOD FRAMED DECK	SCOC 20

NOTE:

DRYVIT AND TREMCO MAKE NO REPRESENTATION REGARDING CONFORMITY OF ITS SUGGESTIONS TO MODEL BUILDING CODES, ENGINEERING CRITERIA, SPECIFIC APPLICATIONS, OR PROJECT LOCATIONS. ALL COMPONENTS INDICATED IN ILLUSTRATIONS, AS WELL AS OTHERS THAT MAY BE REQUIRED FOR THE INTEGRITY OF THE SYSTEM SHALL BE DESIGNED, DETAILED, AND ENGINEERED BY REPRESENTATIVES OF THE ARCHITECT, OWNER, OR CONTRACTOR TO BE IN CONFORMANCE WITH MODEL CODES, ARCHITECTURAL, AND ENGINEERING REQUIREMENTS PERTAINING TO SPECIFIC BUILDING PROJECTS.

DRYVIT AND TREMCO MAKE NO WARRANTY, EXPRESSED OR IMPLIED, AS TO THE ARCHITECTURAL DESIGN, ENGINEERING, OR WORKMANSHIP OF PROJECTS UTILIZING DRYVIT SYSTEMS OR PRODUCTS.

THE LIABILITIES OF DRYVIT AND TREMCO SHALL BE AS STATED IN THE DRYVIT STANDARD WARRANTY. CONTACT DRYVIT OR TREMCO FOR A FULL AND COMPLETE COPY OF THE WARRANTY.

This detail is for general informational purposes, only. The project design professional determines, in its sole discretion, whether this detail or a functionally equivalent detail is best suited for the project with respect to any architecture, engineering, and design requirements, including any local building code requirements. If this document is not reviewed and the product is not approved for use by a licensed design professional, the customer agrees that the detail may contain substantive flaws requiring correction, and hereby releases Tremco CPG Inc. from any and all liability related to the design and installation of the product. This detail is subject to change without notice. Contact Tremco to ensure you have the most recent version.

StucCoat One Coat® System



Dryvit Technical Support: 800-556-7752

Detail: Table of Contents

Drawn by: KAB

Checked by: CW

Scale: NTS

Date: 02/12/2025

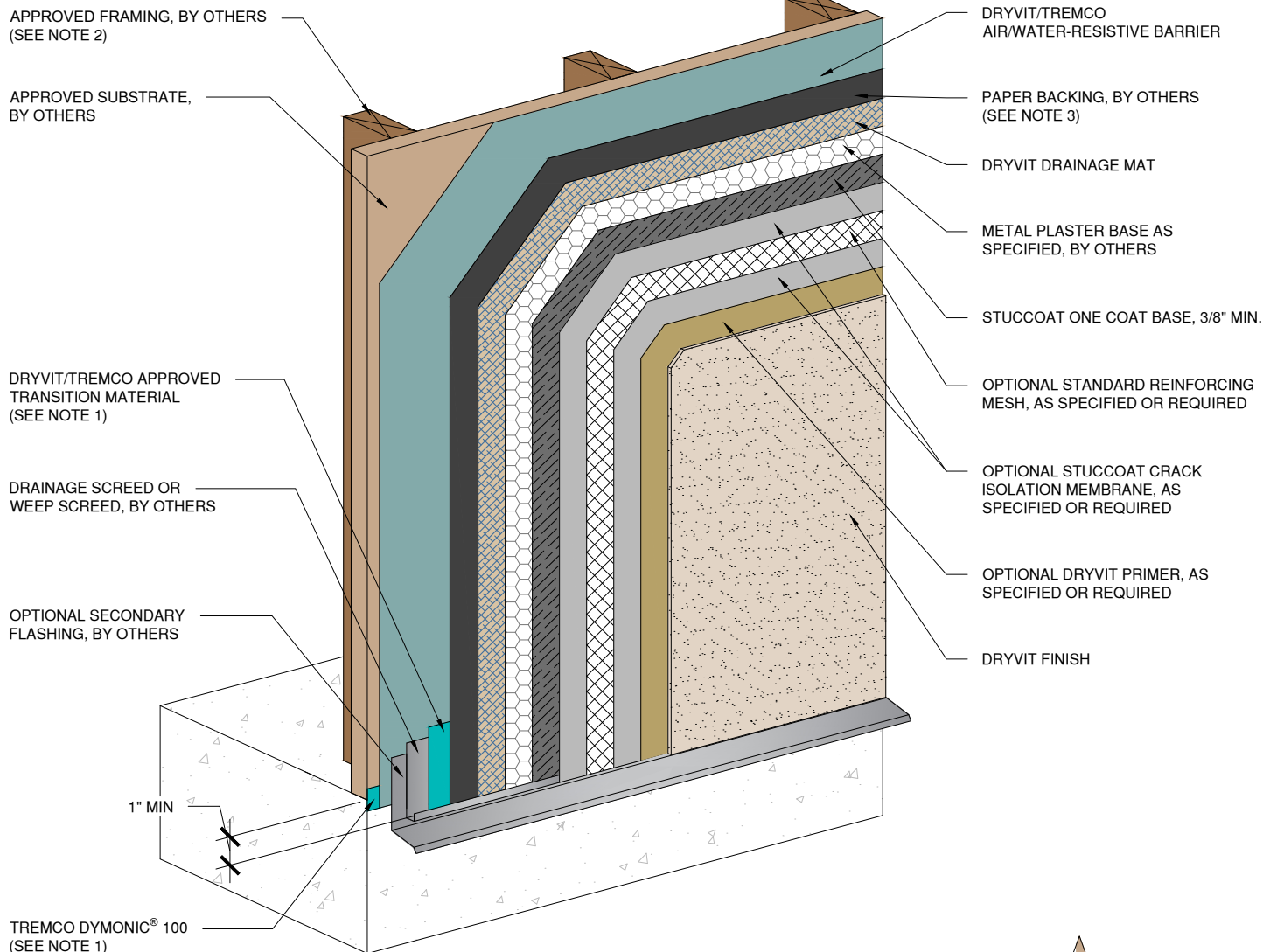
File Name:

TOC

www.tremcocpg.com



Construction Products Group



OPTIONAL SECONDARY
METAL FLASHING

1" MIN

SECTION DETAIL

NOTE:

1. REFER TO PRODUCT DATA SHEETS FOR SPECIFIC APPLICATION METHODS.
2. WALL ASSEMBLY SHALL PROVIDE FOR A MAXIMUM DESIGN DEFLECTION OF $L/360$.
3. PAPER BACKING BY OTHERS IS OPTIONAL WHEN DRYVIT $\frac{3}{16}$ " DRAINAGE MAT IS INSTALLED OVER AWRB.

This detail is for general informational purposes, only. The project design professional determines, in its sole discretion, whether this detail or a functionally equivalent detail is best suited for the project with respect to any architecture, engineering, and design requirements, including any local building code requirements. If this document is not reviewed and the product is not approved for use by a licensed design professional, the customer agrees that the detail may contain substantive flaws requiring correction, and hereby releases Tremco CPG Inc. from any and all liability related to the design and installation of the product. This detail is subject to change without notice. Contact Tremco to ensure you have the most recent version.

StucCoat One Coat® System



Detail: StucCoat One Coat System

File Name:

Drawn by: KAB

Checked by: CW

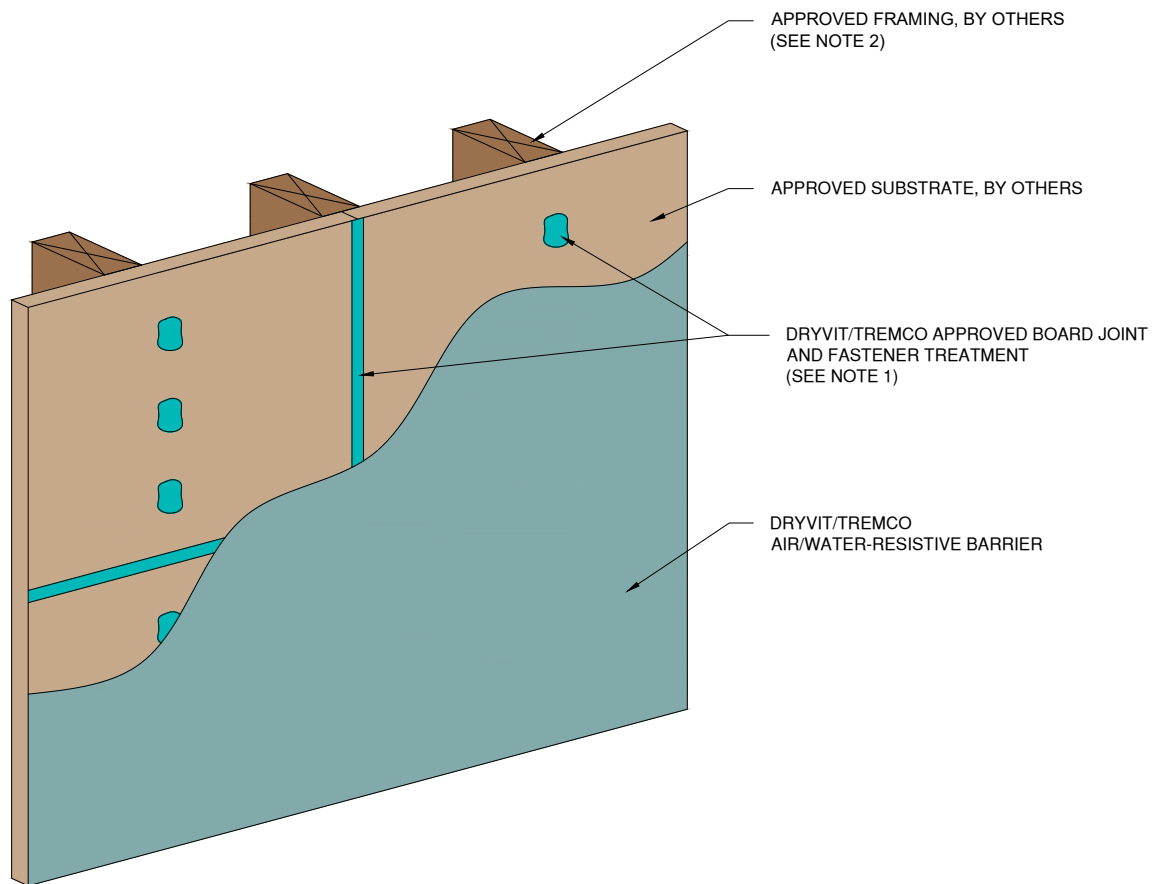
Scale: NTS

Date: 5/2/2025

SCOC 1

www.tremcocpg.com





NOTE:

1. APPLY DYMONIC 100 ENSURING MINIMUM OVERLAP OF 3/4" (19 MM) ONTO EACH PANEL AT 40 MILS.
2. WALL ASSEMBLY SHALL PROVIDE FOR A MAXIMUM DESIGN DEFLECTION OF L/360.

This detail is for general informational purposes, only. The project design professional determines, in its sole discretion, whether this detail or a functionally equivalent detail is best suited for the project with respect to any architecture, engineering, and design requirements, including any local building code requirements. If this document is not reviewed and the product is not approved for use by a licensed design professional, the customer agrees that the detail may contain substantive flaws requiring correction, and hereby releases Tremco CPG Inc. from any and all liability related to the design and installation of the product. This detail is subject to change without notice. Contact Tremco to ensure you have the most recent version.

StucCoat One Coat® System



Dryvit Technical Support: 800-556-7752

Detail: Board Joint and Fastener Treatment

Drawn by: KAB

Checked by: CW

Scale: NTS

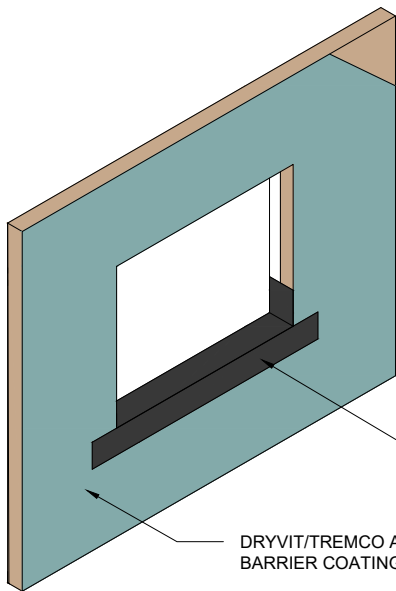
Date: 5/2/2025

File Name:

SCOC 2

www.tremcocpg.com

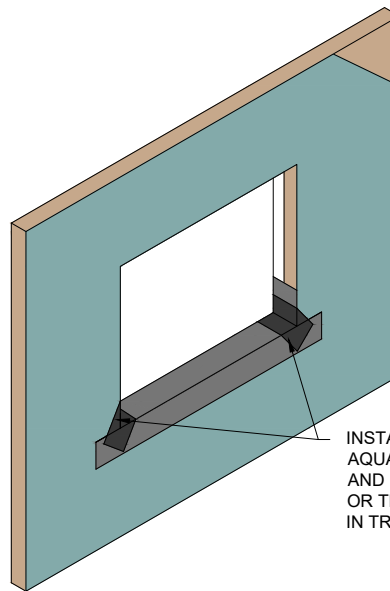




APPLY DRYVIT AQUAFLASH® SYSTEM OR TREMCO EXOAIR® 230 WITH TREMCO® 2011 MESH (SEE NOTE 1)

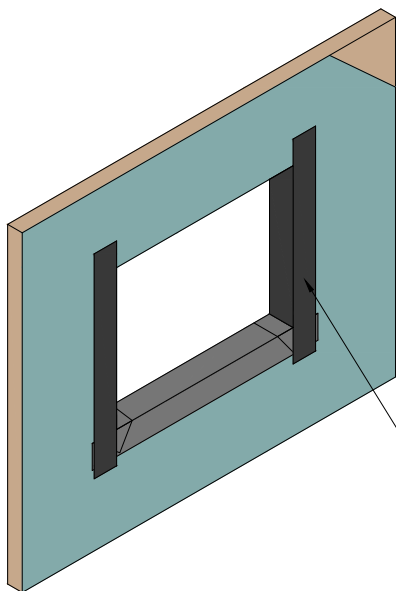
DRYVIT/TREMCO AIR/WATER-RESISTIVE BARRIER COATING

STEP #1



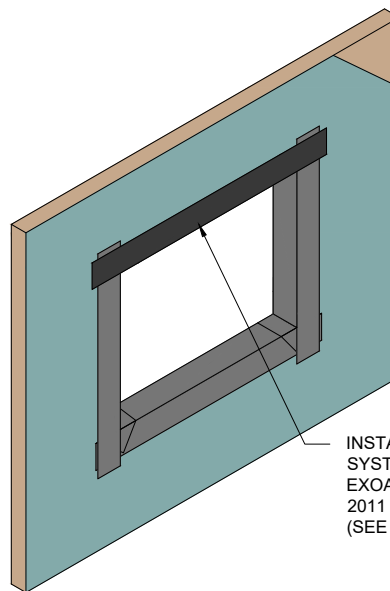
INSTALL DIAGONAL STRIP OF DRYVIT AQUAFLASH MESH AT CORNERS AND EMBED IN AQUAFLASH LIQUID OR TREMCO 2011 MESH EMBEDDED IN TREMCO EXOAIR 230 (SEE NOTE 1)

STEP #2



INSTALL DRYVIT AQUAFLASH SYSTEM OR TREMCO EXOAIR 230 WITH TREMCO 2011 MESH AT JAMBS (SEE NOTES 1, 3)

STEP #3



INSTALL DRYVIT AQUAFLASH SYSTEM OR TREMCO EXOAIR 230 WITH TREMCO 2011 MESH AT HEADS (SEE NOTES 1, 3)

STEP #4

NOTE:

1. DRYVIT AQUAFLASH AND TREMCO EXOAIR 230 WITH MESH SHALL EXTEND TO INTERIOR FACE OF OPENING.
2. REFER TO HEAD, SILL, AND JAMB DETAILS FOR FLASHING INTEGRATION.
3. INSTALL WINDOW UNIT AND ASSOCIATED FLASHINGS PER MANUFACTURER'S RECOMMENDATIONS, CODE REQUIREMENTS AND PROJECT DOCUMENTS.
4. REFER TO PRODUCT DATA SHEETS FOR SPECIFIC APPLICATION METHODS.

This detail is for general informational purposes, only. The project design professional determines, in its sole discretion, whether this detail or a functionally equivalent detail is best suited for the project with respect to any architecture, engineering, and design requirements, including any local building code requirements. If this document is not reviewed and the product is not approved for use by a licensed design professional, the customer agrees that the detail may contain substantive flaws requiring correction, and hereby releases Tremco CPG Inc. from any and all liability related to the design and installation of the product. This detail is subject to change without notice. Contact Tremco to ensure you have the most recent version.

StucCoat One Coat® System



Dryvit Technical Support: 800-556-7752

Detail: Opening Preparation - Dryvit AquaFlash® System or Tremco ExoAir® 230 with Mesh Option

Drawn by: KAB

Checked by: CW

Scale: NTS

Date: 5/2/2025

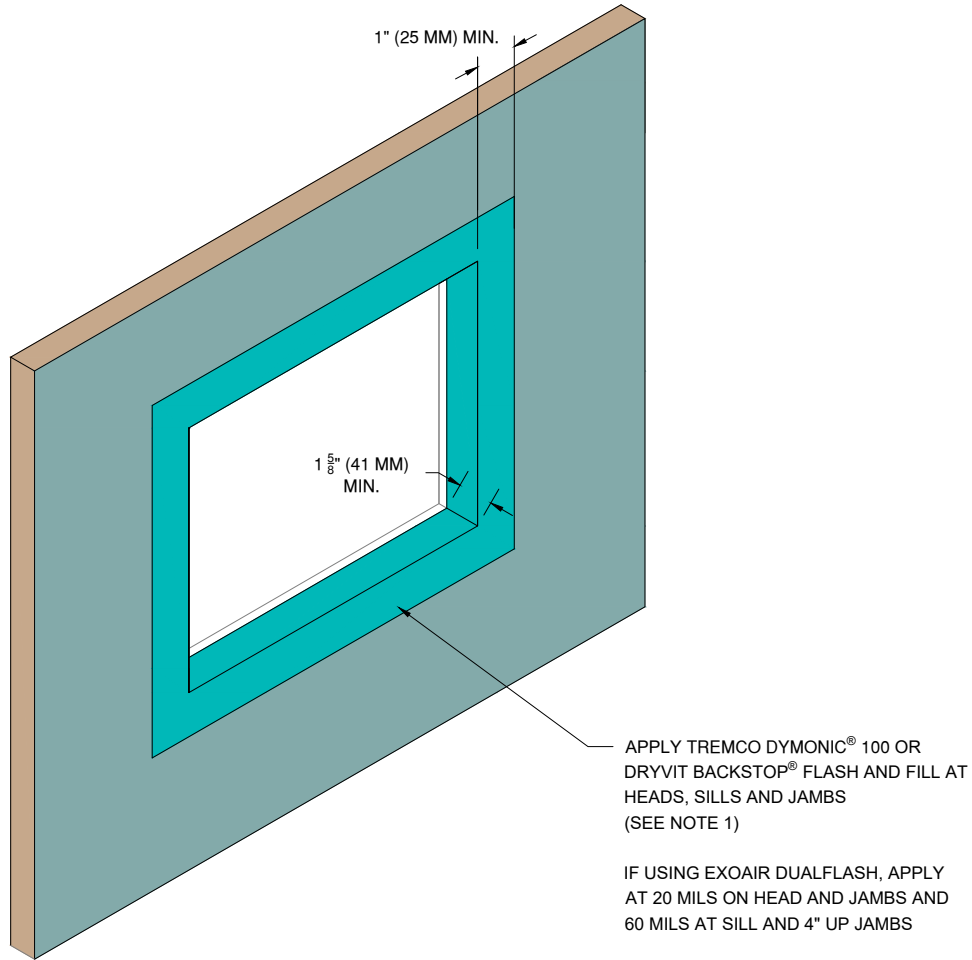
File Name:

SCOC 3



Construction Products Group

www.tremcocpg.com



NOTE:

1. REFER TO HEAD, SILL AND JAMB DETAILS FOR FLASHING INTEGRATION.
2. REFER TO PRODUCT DATA SHEETS FOR SPECIFIC APPLICATION METHODS.
3. THE ONLY WRB TO BE USED WITH BACKSTOP® FLASH AND FILL IS BACKSTOP® NTX™.

This detail is for general informational purposes, only. The project design professional determines, in its sole discretion, whether this detail or a functionally equivalent detail is best suited for the project with respect to any architecture, engineering, and design requirements, including any local building code requirements. If this document is not reviewed and the product is not approved for use by a licensed design professional, the customer agrees that the detail may contain substantive flaws requiring correction, and hereby releases Tremco CPG Inc. from any and all liability related to the design and installation of the product. This detail is subject to change without notice. Contact Tremco to ensure you have the most recent version.

StucCoat One Coat® System



Dryvit Technical Support: 800-556-7752

Detail: Opening Preparation - Tremco Dymonic® 100, Backstop® Flash and Fill, or ExoAir DualFlash Option

Drawn by: KAB

Checked by: CW

Scale: NTS

Date: 5/2/2025

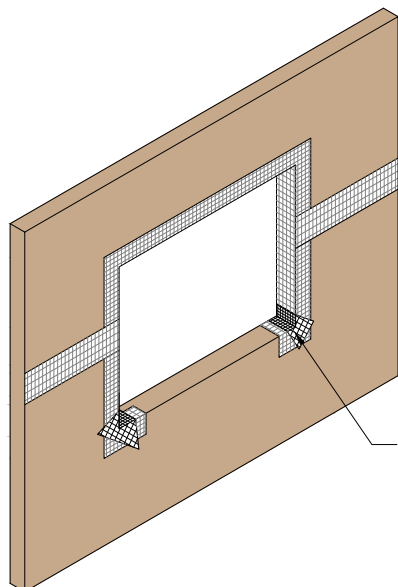
File Name:

SCOC 4

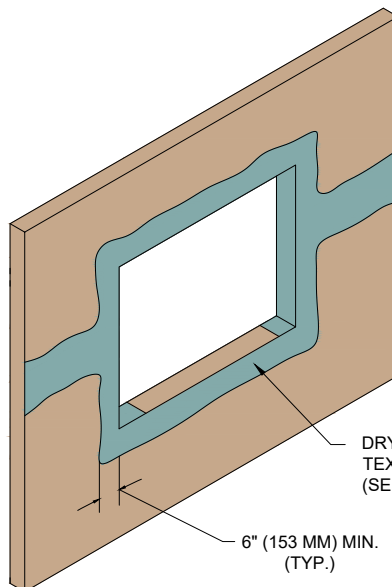


Construction Products Group

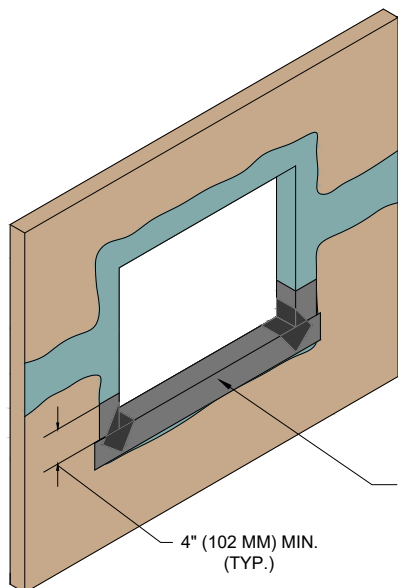
www.tremcocpg.com



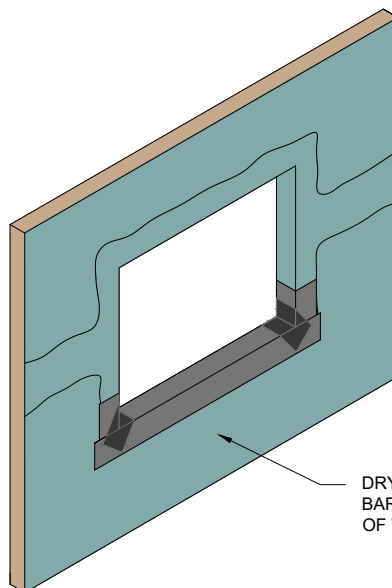
STEP #1



STEP #2



STEP #3



STEP #4

NOTE:

1. APPLY DRYVIT GRID TAPE OR TREMCO EXOAIR 230 WITH TREMCO 2011 MESH ON HEAD, JAMB, AND CORNERS OF OPENINGS AND SHEATHING JOINTS.
2. TROWEL APPLY DRYVIT BACKSTOP® NTX™ - TEXTURE OVER THE DRYVIT GRID TAPE OR APPLY TREMCO EXOAIR 230 WITH TREMCO 2011 MESH ALL THE WAY TO INSIDE FACE OF OPENING. ALL VOIDS MUST BE FILLED; MULTIPLE PASSES MAY BE REQUIRED. AS AN OPTION, DRYVIT GRID TAPE AND DRYVIT BACKSTOP® NTX™ - TEXTURE MAY ALSO BE APPLIED AT THE SILL PRIOR TO DRYVIT AQUAFLASH SYSTEM APPLICATION
3. INSTALL WINDOW UNIT AND ASSOCIATED FLASHINGS PER MANUFACTURER'S RECOMMENDATIONS, CODE REQUIREMENTS AND PROJECT DOCUMENTS.
4. REFER TO HEAD, SILL, AND JAMB DETAILS FOR FLASHING INTEGRATION.
5. REFER TO PRODUCT DATA SHEETS FOR SPECIFIC APPLICATION METHODS.

This detail is for general informational purposes, only. The project design professional determines, in its sole discretion, whether this detail or a functionally equivalent detail is best suited for the project with respect to any architecture, engineering, and design requirements, including any local building code requirements. If this document is not reviewed and the product is not approved for use by a licensed design professional, the customer agrees that the detail may contain substantive flaws requiring correction, and hereby releases Tremco CPG Inc. from any and all liability related to the design and installation of the product. This detail is subject to change without notice. Contact Tremco to ensure you have the most recent version.

StucCoat One Coat® System



Detail: Opening Preparation - Backstop® NTX or Tremco ExoAir® 230 Option

File Name:

Drawn by: KAB

Checked by: CW

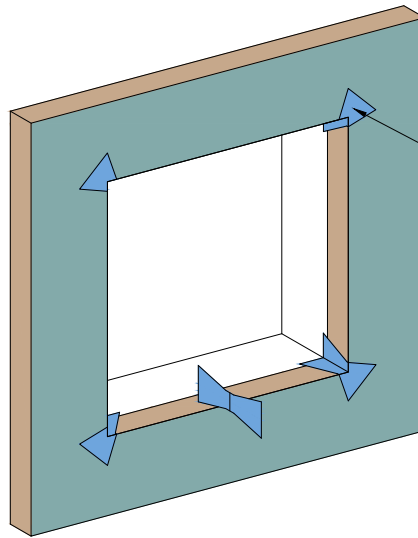
Scale: NTS

Date: 5/2/2025

SCOC 5

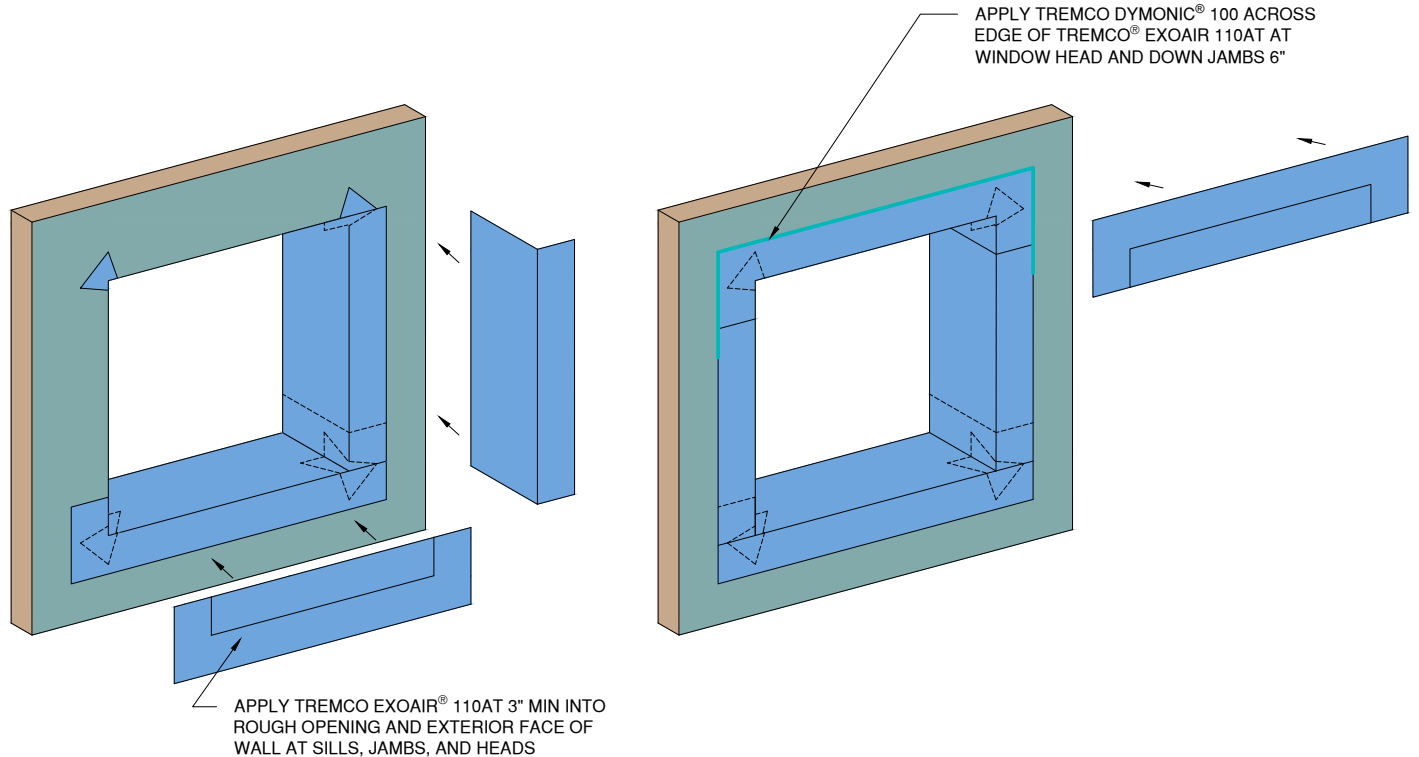
www.tremcocpg.com





TREMCO EXOAIR® 110AT BOW TIES
INSTALLED AT ROUGH OPENING CORNERS

STEP #1



STEP #2

STEP #3

NOTE:

1. REFER TO HEAD, SILL AND JAMB DETAILS FOR FLASHING INTEGRATION.

This detail is for general informational purposes, only. The project design professional determines, in its sole discretion, whether this detail or a functionally equivalent detail is best suited for the project with respect to any architecture, engineering, and design requirements, including any local building code requirements. If this document is not reviewed and the product is not approved for use by a licensed design professional, the customer agrees that the detail may contain substantive flaws requiring correction, and hereby releases Tremco CPG Inc. from any and all liability related to the design and installation of the product. This detail is subject to change without notice. Contact Tremco to ensure you have the most recent version.

StucCoat One Coat® System



Dryvit Technical Support: 800-556-7752

Detail: Opening Preparation - Tremco ExoAir® 110AT Option

Drawn by: KAB

Checked by: CW

Scale: NTS

Date: 5/2/2025

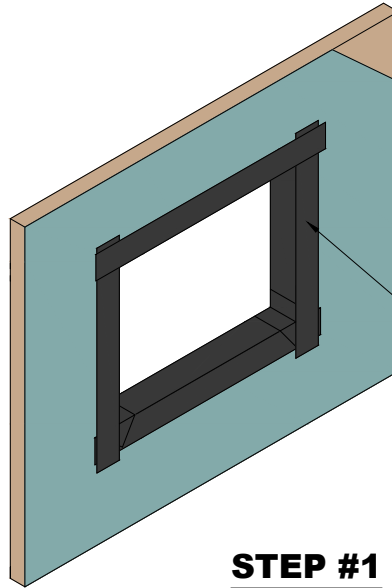
File Name:

SCOC 6

www.tremcocpg.com

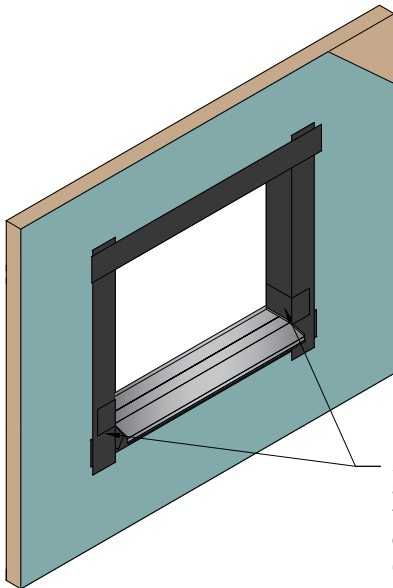


Construction Products Group



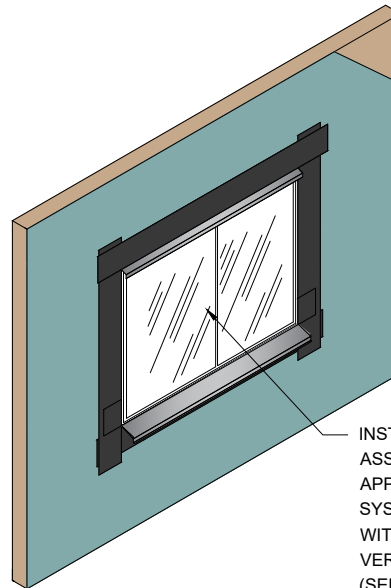
REFER TO OPENING PREPARATION DETAILS
FOR PREPARATION OF OPENING PRIOR TO
FLASHING INSTALLATION

STEP #1



APPLY DRYVIT AQUAFASH®
SYSTEM OR TREMCO EXOAIR® 230 WITH
TREMCO® 2011 MESH SPLICES LAPPING
OVER LIP OF SILL PAN FLASHING.
(SEE NOTE 1)

STEP #2



INSTALL WINDOW UNIT AND
ASSOCIATED FLASHINGS AND
APPLY DRYVIT AQUAFASH
SYSTEM OR TREMCO EXOAIR 230
WITH TREMCO 2011 MESH OVER
VERTICAL LEG OF FLASHING
(SEE NOTE 1)

STEP #3

NOTE:

1. REFER TO PRODUCT DATA SHEETS FOR
SPECIFIC APPLICATION METHODS.

This detail is for general informational purposes, only. The project design professional determines, in its sole discretion, whether this detail or a functionally equivalent detail is best suited for the project with respect to any architecture, engineering, and design requirements, including any local building code requirements. If this document is not reviewed and the product is not approved for use by a licensed design professional, the customer agrees that the detail may contain substantive flaws requiring correction, and hereby releases Tremco CPG Inc. from any and all liability related to the design and installation of the product. This detail is subject to change without notice. Contact Tremco to ensure you have the most recent version.

StucCoat One Coat® System



Dryvit Technical Support: 800-556-7752

Detail: Opening Flashing Integration - Aquaflash® System or
Tremco ExoAir® 230 Option

Drawn by: KAB

Checked by: CW

Scale: NTS

Date: 5/2/2025

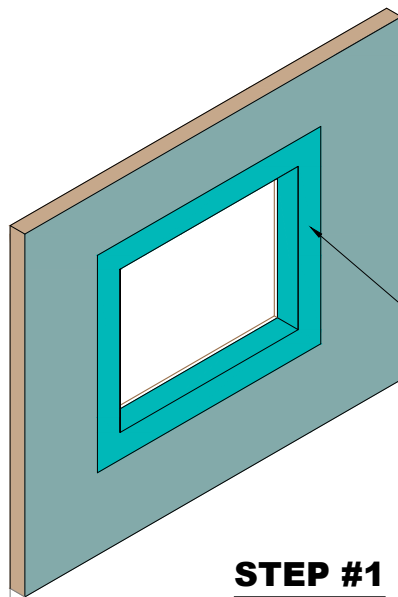
File Name:

SCOC 7



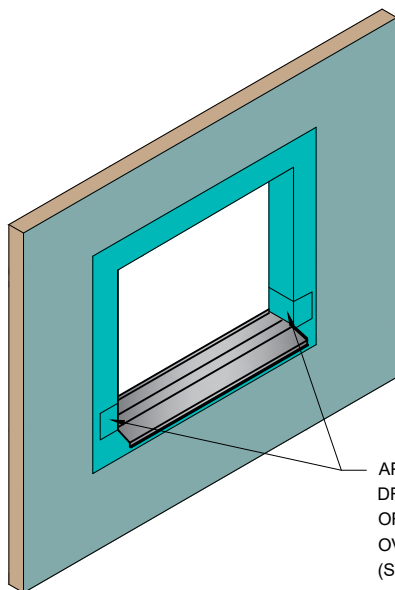
Construction Products Group

www.tremcocpg.com



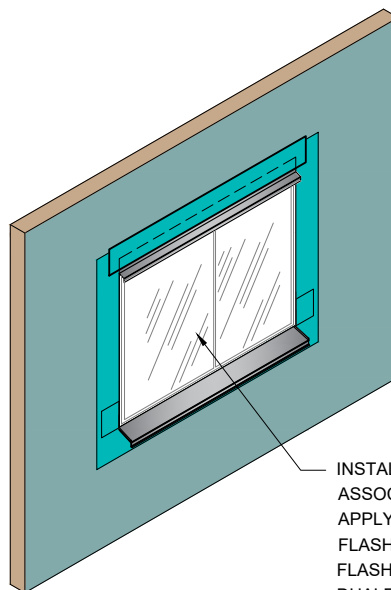
REFER TO OPENING PREPARATION DETAILS
FOR PREPARATION OF OPENING PRIOR TO
FLASHING INSTALLATION

STEP #1



APPLY TREMCO DYMONIC® 100,
DRYVIT BACKSTOP® FLASH AND FILL,
OR EXOAIR DUALFLASH, LAPPING
OVER LIP OF SILL PAN FLASHING.
(SEE NOTES 1, 2)

STEP #2



INSTALL WINDOW UNIT AND
ASSOCIATED FLASHINGS AND
APPLY TREMCO DYMONIC® 100
FLASH AND FILL, OR EXOAIR
DUALFLASH OVER VERTICAL LEG
OF FLASHING (SEE NOTES 1, 2),

STEP #3

NOTE:

1. REFER TO PRODUCT DATA SHEETS FOR SPECIFIC APPLICATION METHODS.
2. THE ONLY WRB TO BE USED WITH BACKSTOP® FLASH AND FILL IS BACKSTOP® NTX™.

This detail is for general informational purposes, only. The project design professional determines, in its sole discretion, whether this detail or a functionally equivalent detail is best suited for the project with respect to any architecture, engineering, and design requirements, including any local building code requirements. If this document is not reviewed and the product is not approved for use by a licensed design professional, the customer agrees that the detail may contain substantive flaws requiring correction, and hereby releases Tremco CPG Inc. from any and all liability related to the design and installation of the product. This detail is subject to change without notice. Contact Tremco to ensure you have the most recent version.

StucCoat One Coat® System



Dryvit Technical Support: 800-556-7752

Detail: Opening Flashing Integration - Tremco Dymonic® 100,
Backstop® Flash and Fill, or ExoAir DualFlash Option

Drawn by: KAB

Checked by: CW

Scale: NTS

Date: 5/2/2025

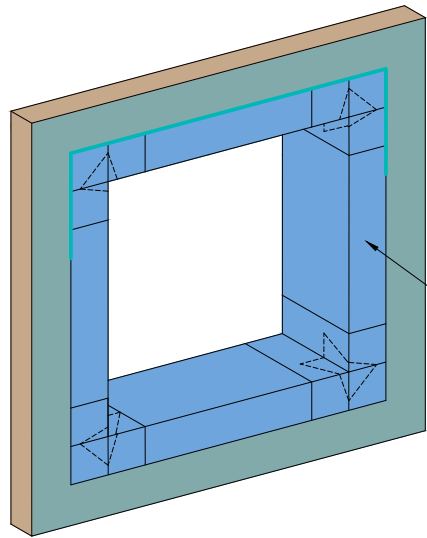
File Name:

SCOC 8



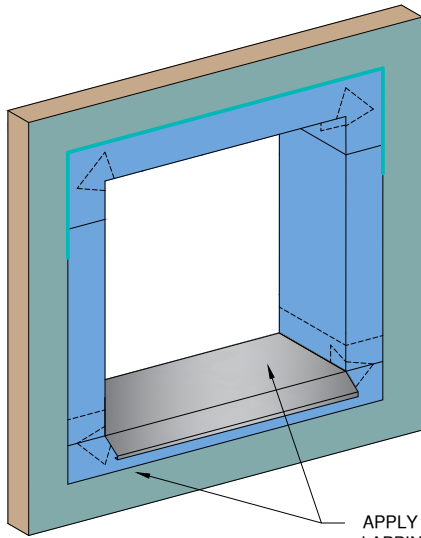
Construction Products Group

www.tremcocpg.com



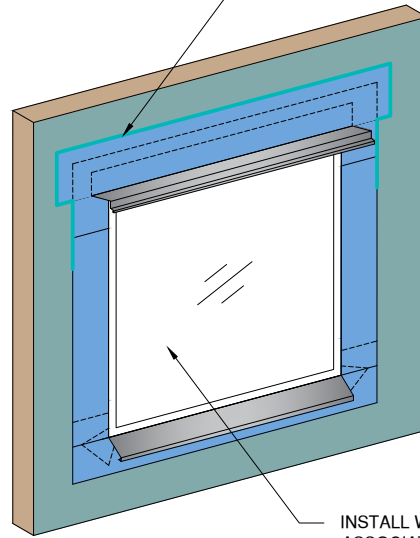
REFER TO OPENING PREPARATION
DETAILS FOR DETAILING OF OPENING
PRIOR TO FLASHING INSTALLATION

STEP #1



APPLY TREMCO EXOAIR® 110AT
LAPPING OVER LIP OF SILL PAN FLASHING
(SEE NOTE 1)

STEP #2



APPLY TREMCO DYMONIC® 100 ACROSS
EDGE OF TREMCO® EXOAIR 110AT AT
WINDOW HEAD AND DOWN JAMBS 6"

INSTALL WINDOW UNIT AND
ASSOCIATED FLASHINGS AND
APPLY TREMCO EXOAIR® 110AT
OVER VERTICAL LEG OF
FLASHING (SEE NOTE 1)

STEP #3

NOTE:

1. INSTALL WINDOW UNIT AND ASSOCIATED FLASHINGS
PER MANUFACTURER'S RECOMMENDATIONS, CODE
REQUIREMENTS AND PROJECT DOCUMENTS.

This detail is for general informational purposes, only. The project design professional determines, in its sole discretion, whether this detail or a functionally equivalent detail is best suited for the project with respect to any architecture, engineering, and design requirements, including any local building code requirements. If this document is not reviewed and the product is not approved for use by a licensed design professional, the customer agrees that the detail may contain substantive flaws requiring correction, and hereby releases Tremco CPG Inc. from any and all liability related to the design and installation of the product. This detail is subject to change without notice. Contact Tremco to ensure you have the most recent version.

StucCoat One Coat® System



Dryvit Technical Support: 800-556-7752

Detail: Opening Flashing Integration - Tremco ExoAir® 110AT Option

Drawn by: KAB

Checked by: CW

Scale: NTS

Date: 5/2/2025

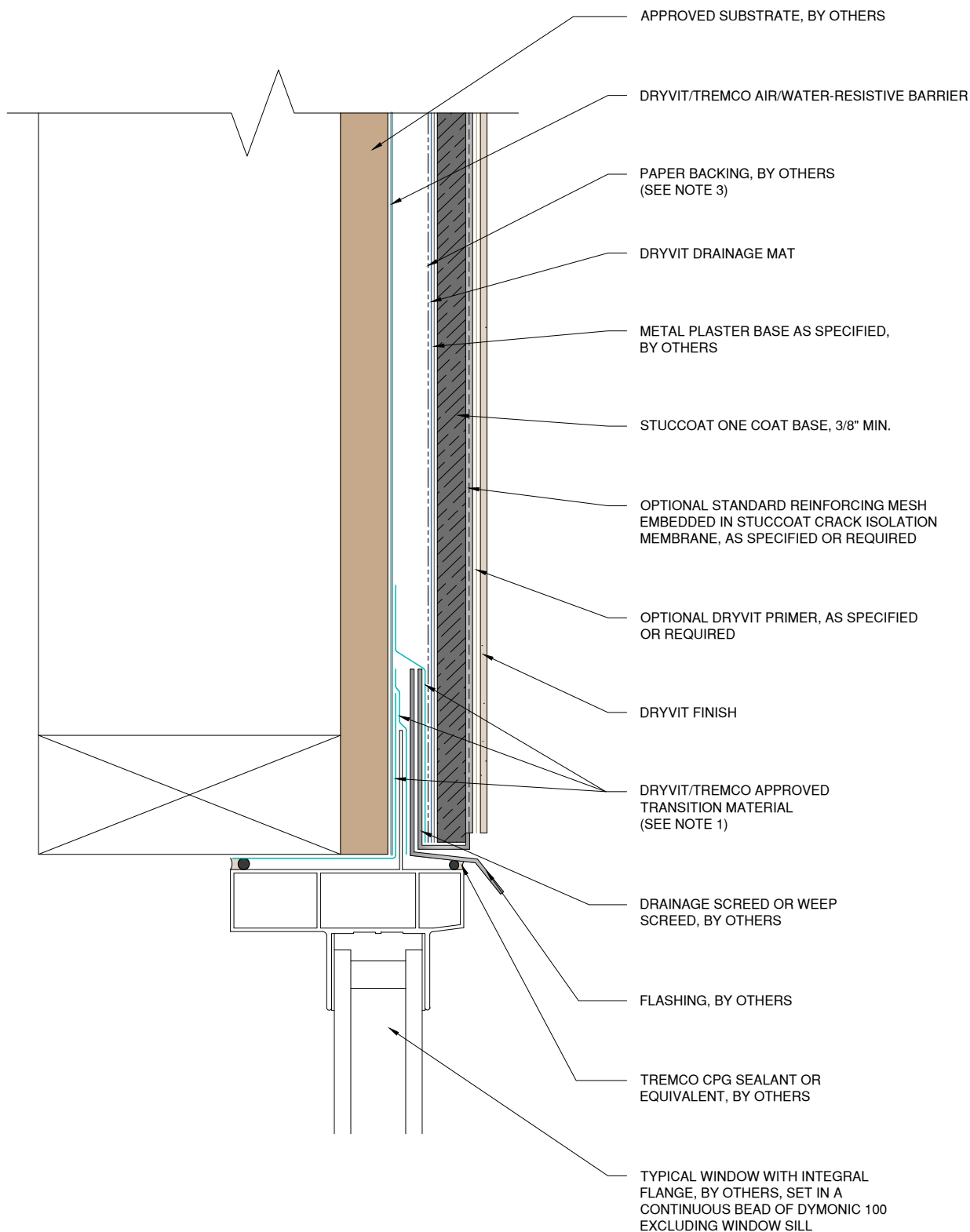
File Name:

SCOC 9



Construction Products Group

www.tremcocpg.com



NOTE:

1. REFER TO PRODUCT DATA SHEETS FOR SPECIFIC APPLICATION METHODS.
2. WALL ASSEMBLY SHALL PROVIDE FOR A MAXIMUM DESIGN DEFLECTION OF L/360.
3. PAPER BACKING BY OTHERS IS OPTIONAL WHEN DRYVIT $\frac{3}{16}$ " DRAINAGE MAT IS INSTALLED OVER AWRB.

This detail is for general informational purposes, only. The project design professional determines, in its sole discretion, whether this detail or a functionally equivalent detail is best suited for the project with respect to any architecture, engineering, and design requirements, including any local building code requirements. If this document is not reviewed and the product is not approved for use by a licensed design professional, the customer agrees that the detail may contain substantive flaws requiring correction, and hereby releases Tremco CPG Inc. from any and all liability related to the design and installation of the product. This detail is subject to change without notice. Contact Tremco to ensure you have the most recent version.

StucCoat One Coat® System



Detail: Flanged Window Head

Drawn by: KAB

Checked by: CW

Scale: NTS

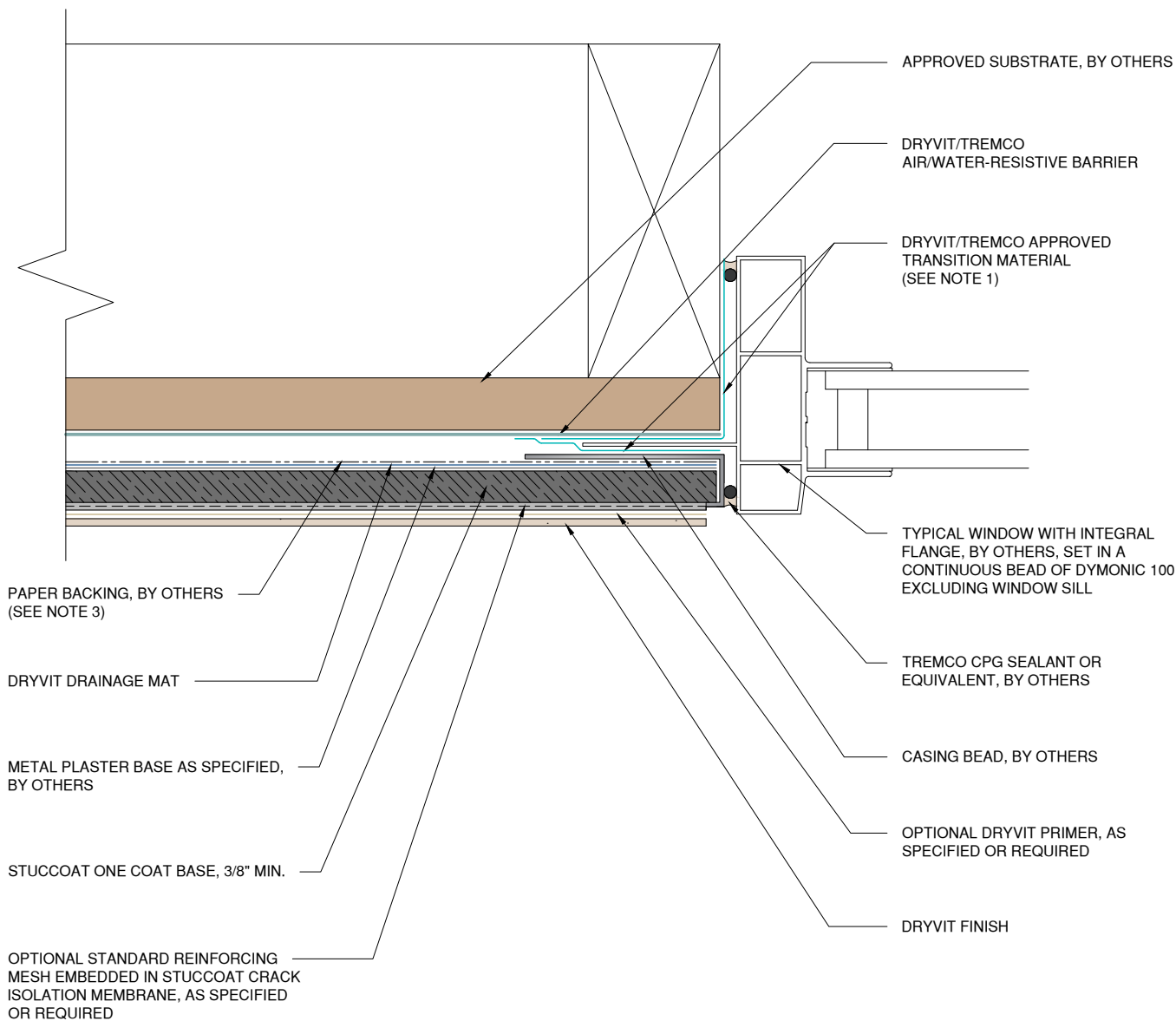
Date: 5/2/2025

File Name:

SCOC 10

www.tremcocpg.com





NOTE:

1. REFER TO PRODUCT DATA SHEETS FOR SPECIFIC APPLICATION METHODS.
2. WALL ASSEMBLY SHALL PROVIDE FOR A MAXIMUM DESIGN DEFLECTION OF L/360.
3. PAPER BACKING BY OTHERS IS OPTIONAL WHEN DRYVIT $\frac{3}{16}$ " DRAINAGE MAT IS INSTALLED OVER AWRB.

This detail is for general informational purposes, only. The project design professional determines, in its sole discretion, whether this detail or a functionally equivalent detail is best suited for the project with respect to any architecture, engineering, and design requirements, including any local building code requirements. If this document is not reviewed and the product is not approved for use by a licensed design professional, the customer agrees that the detail may contain substantive flaws requiring correction, and hereby releases Tremco CPG Inc. from any and all liability related to the design and installation of the product. This detail is subject to change without notice. Contact Tremco to ensure you have the most recent version.

StucCoat One Coat® System



Detail: Flanged Window Jamb

Drawn by: KAB

Checked by: CW

Scale: NTS

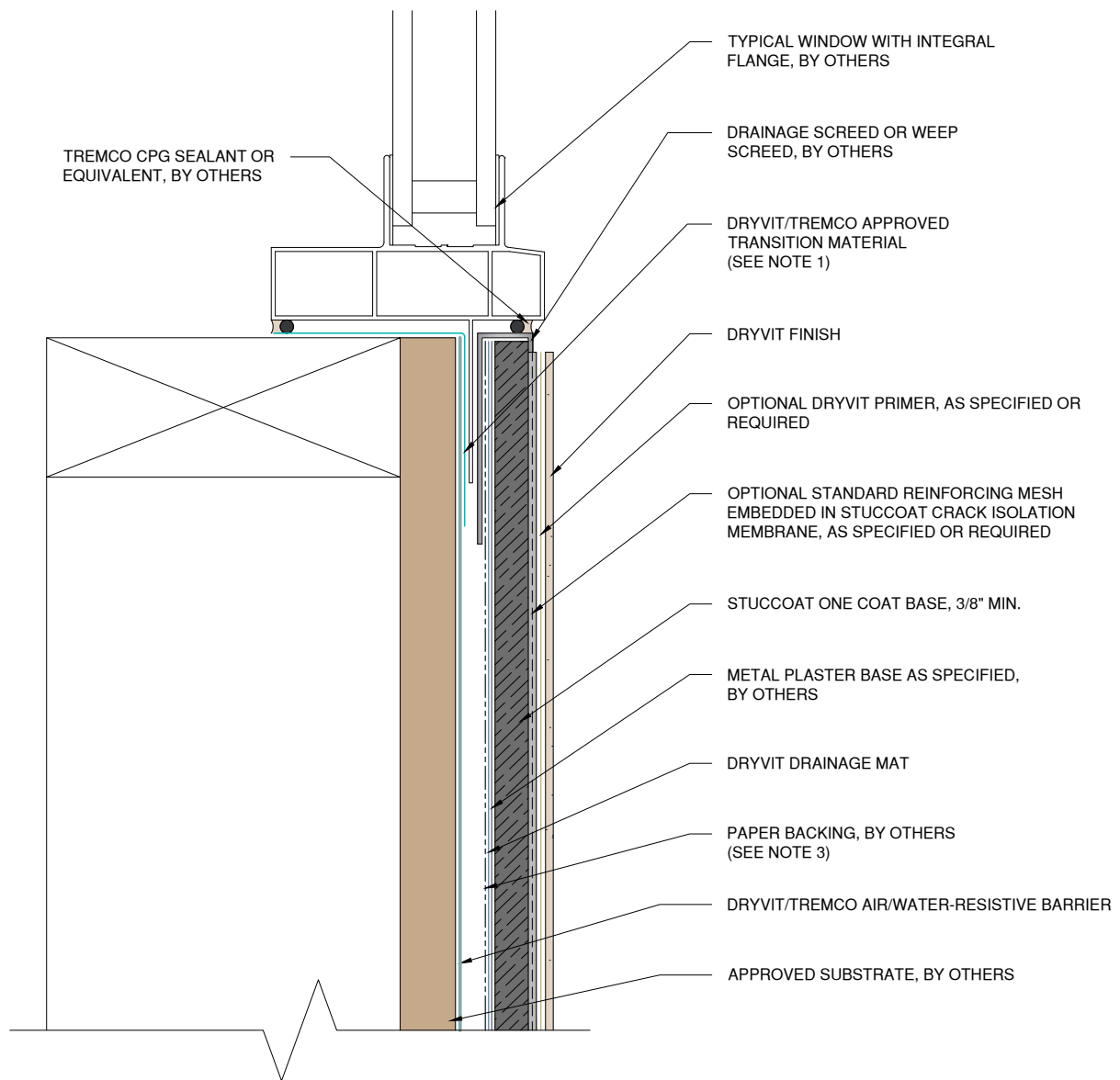
Date: 5/2/2025

File Name:

SCOC 11



www.tremcocpg.com



NOTE:

1. REFER TO PRODUCT DATA SHEETS FOR SPECIFIC APPLICATION METHODS.
2. WALL ASSEMBLY SHALL PROVIDE FOR A MAXIMUM DESIGN DEFLECTION OF $L/360$.
3. PAPER BACKING BY OTHERS IS OPTIONAL WHEN DRYVIT $\frac{3}{16}$ " DRAINAGE MAT IS INSTALLED OVER AWRB.

This detail is for general informational purposes, only. The project design professional determines, in its sole discretion, whether this detail or a functionally equivalent detail is best suited for the project with respect to any architecture, engineering, and design requirements, including any local building code requirements. If this document is not reviewed and the product is not approved for use by a licensed design professional, the customer agrees that the detail may contain substantive flaws requiring correction, and hereby releases Tremco CPG Inc. from any and all liability related to the design and installation of the product. This detail is subject to change without notice. Contact Tremco to ensure you have the most recent version.

StucCoat One Coat® System



Detail: Flanged Window Sill

File Name:

Drawn by: KAB

Checked by: CW

Scale: NTS

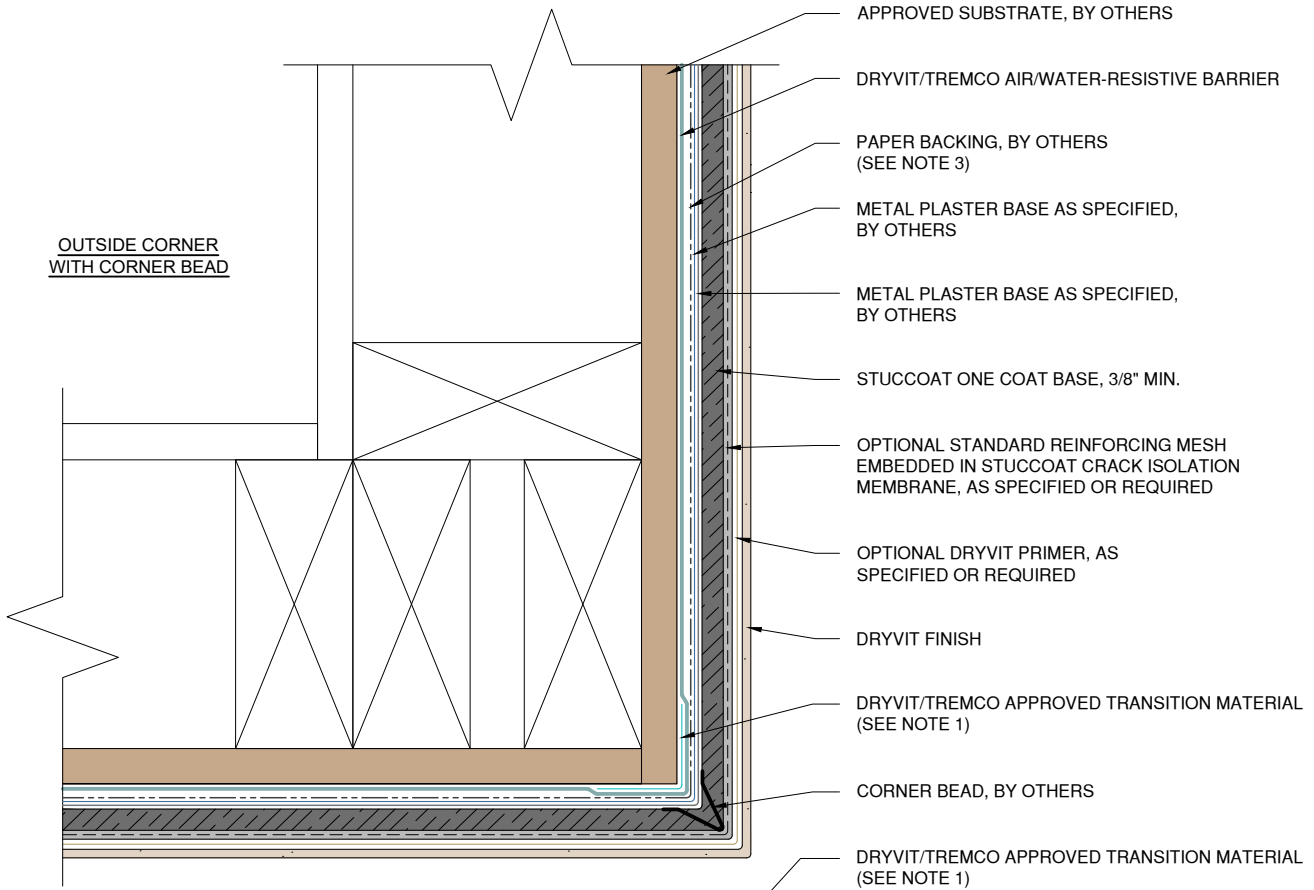
Date: 5/2/2025

SCOC 12



www.tremcocpg.com

OUTSIDE CORNER
WITH CORNER BEAD



APPROVED SUBSTRATE, BY OTHERS

DRYVIT/TREMCO
AIR/WATER-RESISTIVE BARRIER

PAPER BACKING, BY OTHERS
(SEE NOTE 3)

DRYVIT DRAINAGE MAT

METAL PLASTER BASE AS SPECIFIED,
BY OTHERS

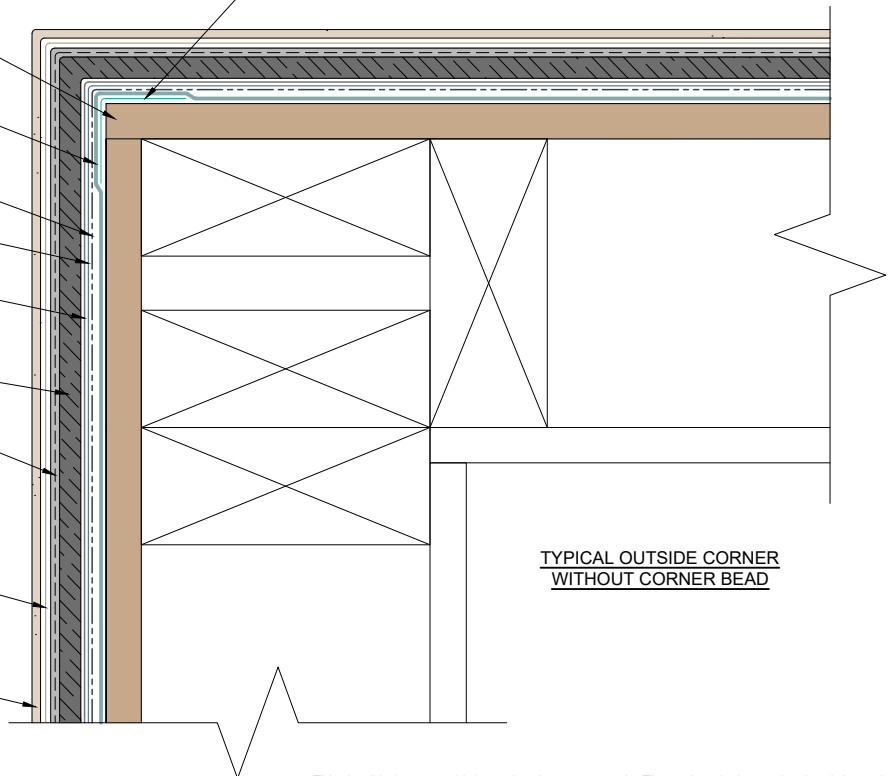
STUCCOAT ONE COAT BASE, 3/8" MIN.

OPTIONAL STANDARD REINFORCING MESH
EMBEDDED IN STUCCOAT CRACK
ISOLATION MEMBRANE, AS SPECIFIED OR
REQUIRED

OPTIONAL DRYVIT PRIMER, AS
SPECIFIED OR REQUIRED

DRYVIT FINISH

TYPICAL OUTSIDE CORNER
WITHOUT CORNER BEAD



NOTE:

1. REFER TO PRODUCT DATA SHEETS FOR SPECIFIC APPLICATION METHODS.
2. WALL ASSEMBLY SHALL PROVIDE FOR A MAXIMUM DESIGN DEFLECTION OF $L/360$.
3. PAPER BACKING BY OTHERS IS OPTIONAL WHEN DRYVIT $\frac{3}{16}$ " DRAINAGE MAT IS INSTALLED OVER AWRB.

This detail is for general informational purposes, only. The project design professional determines, in its sole discretion, whether this detail or a functionally equivalent detail is best suited for the project with respect to any architecture, engineering, and design requirements, including any local building code requirements. If this document is not reviewed and the product is not approved for use by a licensed design professional, the customer agrees that the detail may contain substantive flaws requiring correction, and hereby releases Tremco CPG Inc. from any and all liability related to the design and installation of the product. This detail is subject to change without notice. Contact Tremco to ensure you have the most recent version.

StucCoat One Coat® System

Detail: Outside Corner

File Name:

Drawn by: KAB

Checked by: CW

Scale: NTS

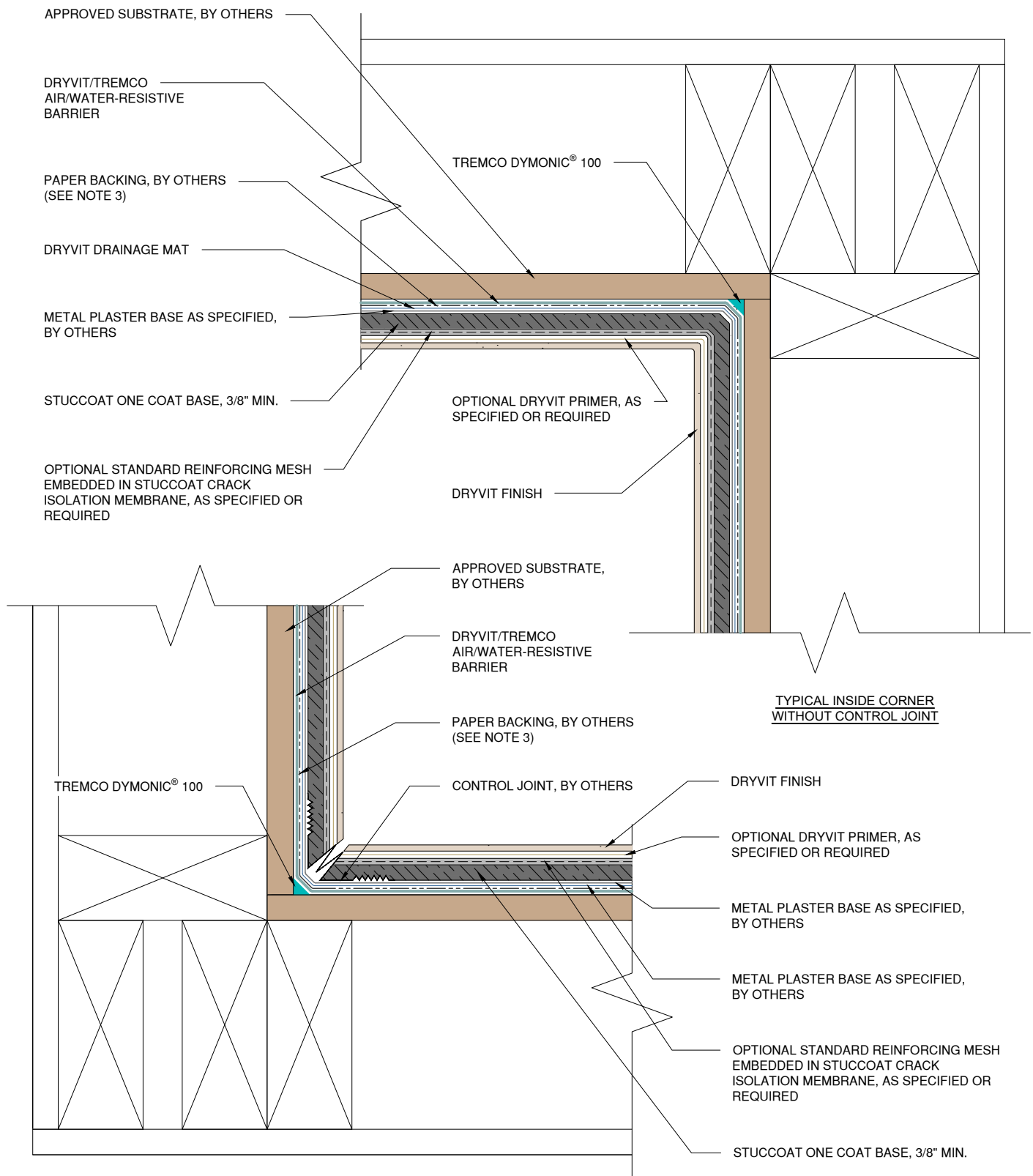
Date: 5/2/2025

SCOC 13



www.tremcocpg.com





NOTE:

1. REFER TO PRODUCT DATA SHEETS FOR SPECIFIC APPLICATION METHODS.
2. WALL ASSEMBLY SHALL PROVIDE FOR A MAXIMUM DESIGN DEFLECTION OF L/360.
3. PAPER BACKING BY OTHERS IS OPTIONAL WHEN DRYVIT $\frac{3}{16}$ " DRAINAGE MAT IS INSTALLED OVER AWRB.

This detail is for general informational purposes, only. The project design professional determines, in its sole discretion, whether this detail or a functionally equivalent detail is best suited for the project with respect to any architecture, engineering, and design requirements, including any local building code requirements. If this document is not reviewed and the product is not approved for use by a licensed design professional, the customer agrees that the detail may contain substantive flaws requiring correction, and hereby releases Tremco CPG Inc. from any and all liability related to the design and installation of the product. This detail is subject to change without notice. Contact Tremco to ensure you have the most recent version.

StucCoat One Coat® System



Detail: Inside Corner

Drawn by: KAB

Checked by: CW

Scale: NTS

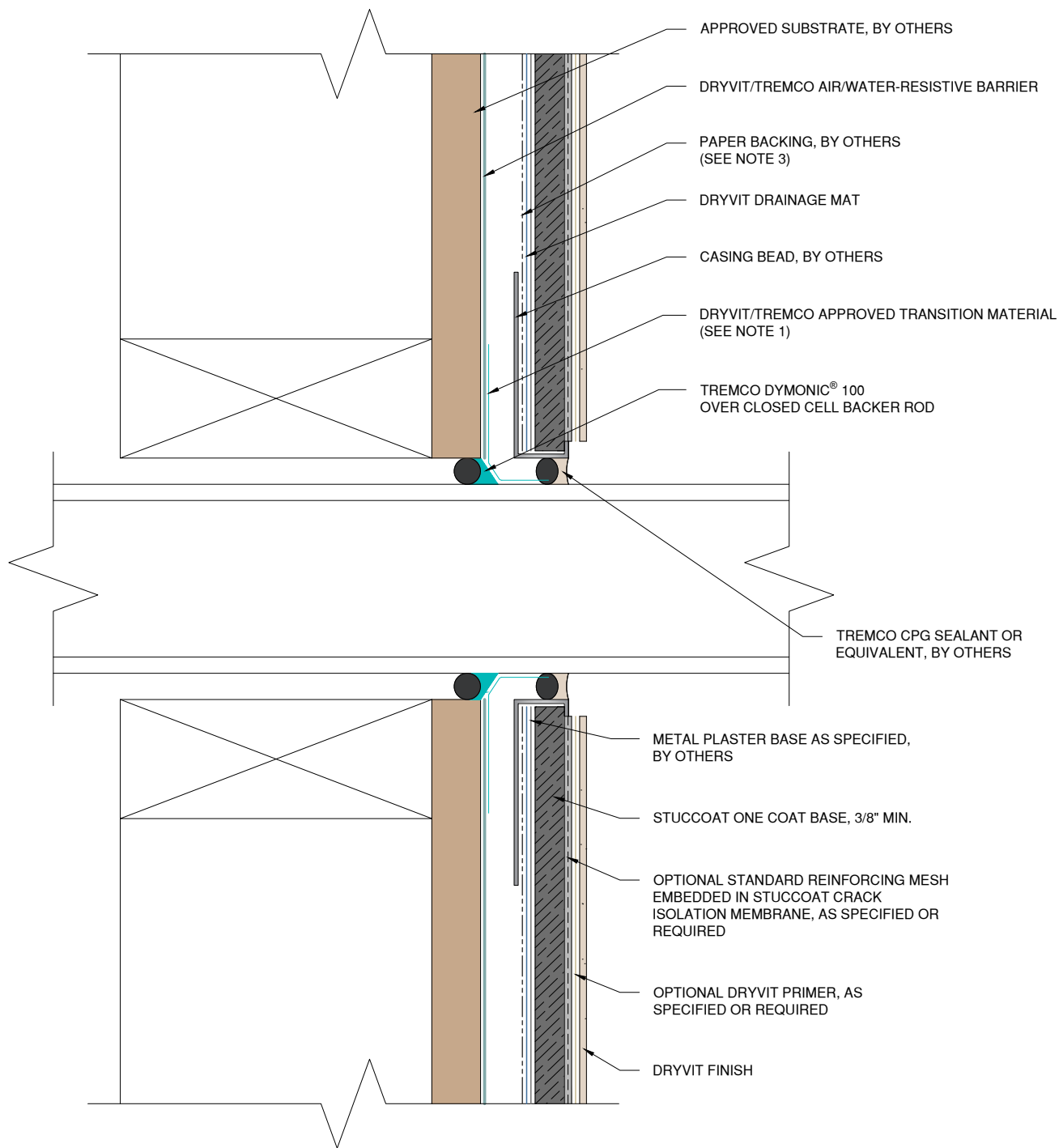
Date: 5/2/2025

File Name:

SCOC 14

www.tremcocpg.com





NOTE:

1. REFER TO PRODUCT DATA SHEETS FOR SPECIFIC APPLICATION METHODS.
2. WALL ASSEMBLY SHALL PROVIDE FOR A MAXIMUM DESIGN DEFLECTION OF L/360.
3. PAPER BACKING BY OTHERS IS OPTIONAL WHEN DRYVIT $\frac{3}{16}$ " DRAINAGE MAT IS INSTALLED OVER AWRB.

This detail is for general informational purposes, only. The project design professional determines, in its sole discretion, whether this detail or a functionally equivalent detail is best suited for the project with respect to any architecture, engineering, and design requirements, including any local building code requirements. If this document is not reviewed and the product is not approved for use by a licensed design professional, the customer agrees that the detail may contain substantive flaws requiring correction, and hereby releases Tremco CPG Inc. from any and all liability related to the design and installation of the product. This detail is subject to change without notice. Contact Tremco to ensure you have the most recent version.

StucCoat One Coat® System



Detail: Penetration

Drawn by: KAB

Checked by: CW

Scale: NTS

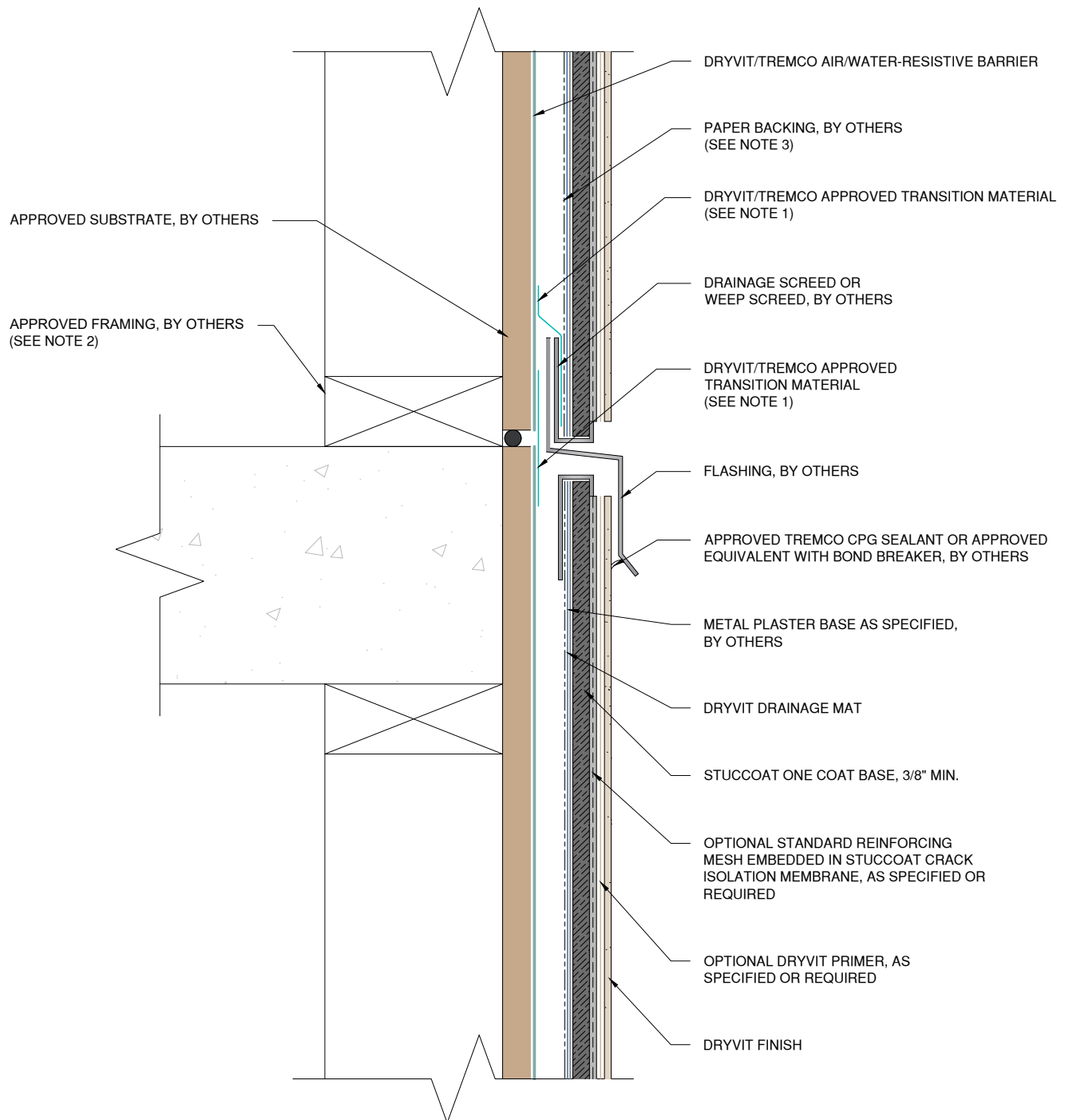
Date: 5/2/2025

File Name:

SCOC 15

www.tremcocpg.com





NOTE:

1. REFER TO PRODUCT DATA SHEETS FOR SPECIFIC APPLICATION METHODS.
2. WALL ASSEMBLY SHALL PROVIDE FOR A MAXIMUM DESIGN DEFLECTION OF L/360.
3. PAPER BACKING BY OTHERS IS OPTIONAL WHEN DRYVIT $\frac{3}{16}$ " DRAINAGE MAT IS INSTALLED OVER AWRB.

This detail is for general informational purposes, only. The project design professional determines, in its sole discretion, whether this detail or a functionally equivalent detail is best suited for the project with respect to any architecture, engineering, and design requirements, including any local building code requirements. If this document is not reviewed and the product is not approved for use by a licensed design professional, the customer agrees that the detail may contain substantive flaws requiring correction, and hereby releases Tremco CPG Inc. from any and all liability related to the design and installation of the product. This detail is subject to change without notice. Contact Tremco to ensure you have the most recent version.

StucCoat One Coat® System



Detail: Horizontal Flashing & Expansion Joint

File Name:

Drawn by: KAB

Checked by: CW

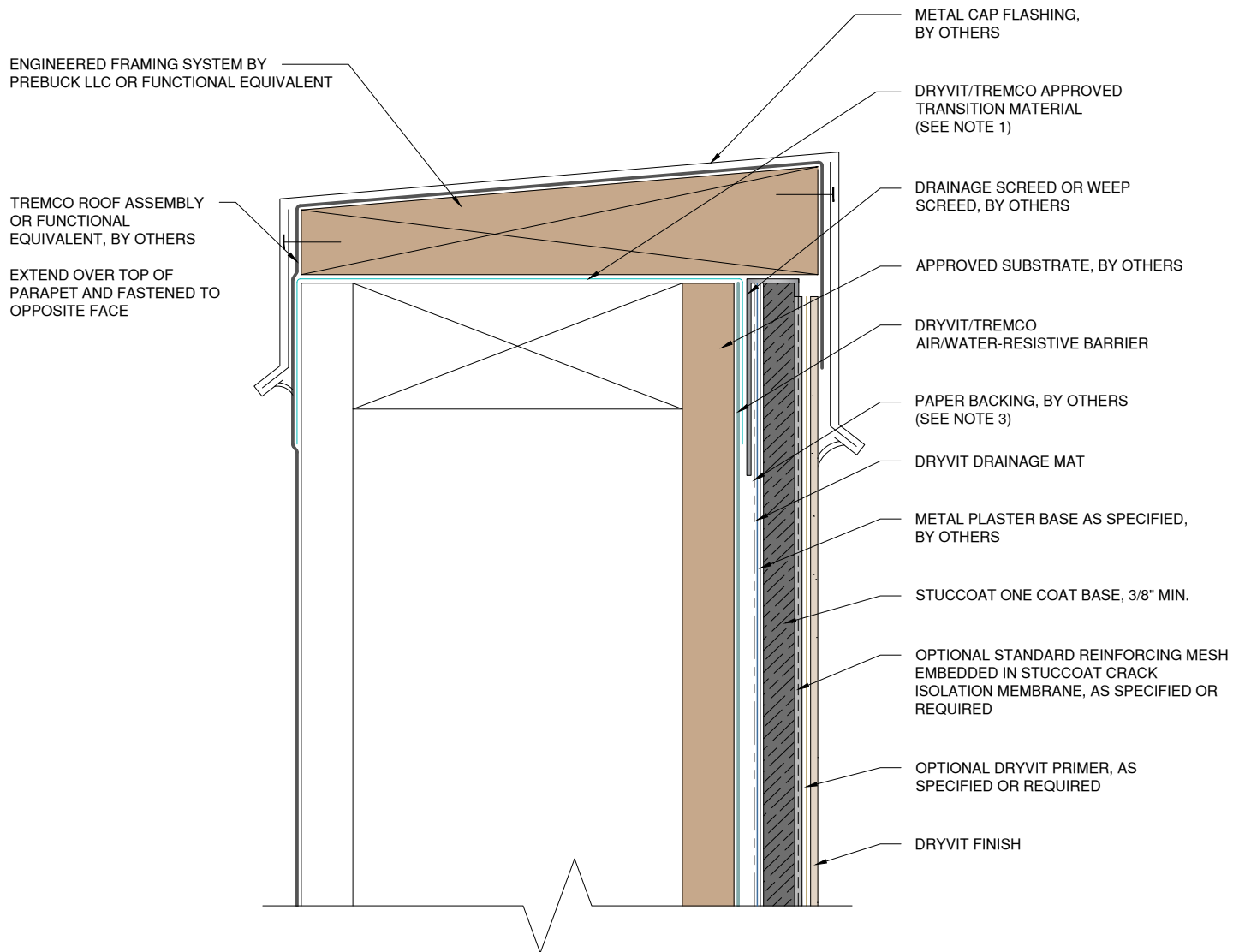
Scale: NTS

Date: 5/2/2025

SCOC 16



www.tremccpg.com



NOTE:

1. REFER TO PRODUCT DATA SHEETS FOR SPECIFIC APPLICATION METHODS.
2. WALL ASSEMBLY SHALL PROVIDE FOR A MAXIMUM DESIGN DEFLECTION OF $L/360$.
3. PAPER BACKING BY OTHERS IS OPTIONAL WHEN DRYVIT $\frac{3}{16}$ " DRAINAGE MAT IS INSTALLED OVER AWRB.

This detail is for general informational purposes, only. The project design professional determines, in its sole discretion, whether this detail or a functionally equivalent detail is best suited for the project with respect to any architecture, engineering, and design requirements, including any local building code requirements. If this document is not reviewed and the product is not approved for use by a licensed design professional, the customer agrees that the detail may contain substantive flaws requiring correction, and hereby releases Tremco CPG Inc. from any and all liability related to the design and installation of the product. This detail is subject to change without notice. Contact Tremco to ensure you have the most recent version.

StucCoat One Coat® System



Detail: Termination at Parapet - Cap Flashing

Drawn by: KAB

Checked by: CW

Scale: NTS

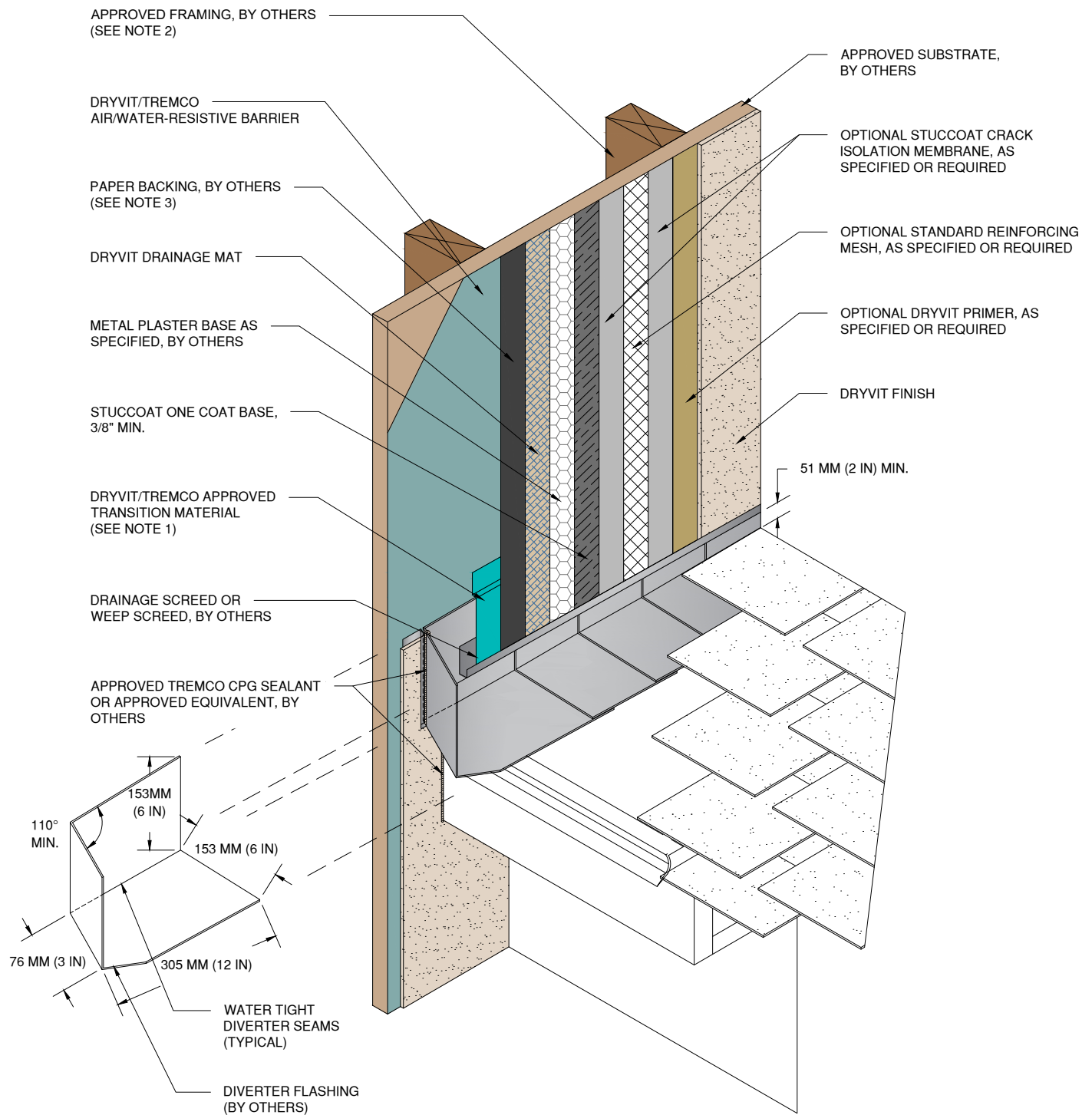
Date: 5/2/2025

File Name:

SCOC 17



www.tremcocpg.com



NOTE:

1. REFER TO PRODUCT DATA SHEETS FOR SPECIFIC APPLICATION METHODS.
2. WALL ASSEMBLY SHALL PROVIDE FOR A MAXIMUM DESIGN DEFLECTION OF $L/360$.
3. PAPER BACKING BY OTHERS IS OPTIONAL WHEN DRYVIT $\frac{3}{16}$ " DRAINAGE MAT IS INSTALLED OVER AWRB.

This detail is for general informational purposes, only. The project design professional determines, in its sole discretion, whether this detail or a functionally equivalent detail is best suited for the project with respect to any architecture, engineering, and design requirements, including any local building code requirements. If this document is not reviewed and the product is not approved for use by a licensed design professional, the customer agrees that the detail may contain substantive flaws requiring correction, and hereby releases Tremco CPG Inc. from any and all liability related to the design and installation of the product. This detail is subject to change without notice. Contact Tremco to ensure you have the most recent version.

StucCoat One Coat® System



Detail: Termination at Roof/Wall Intersection

File Name:

Drawn by: KAB

Checked by: CW

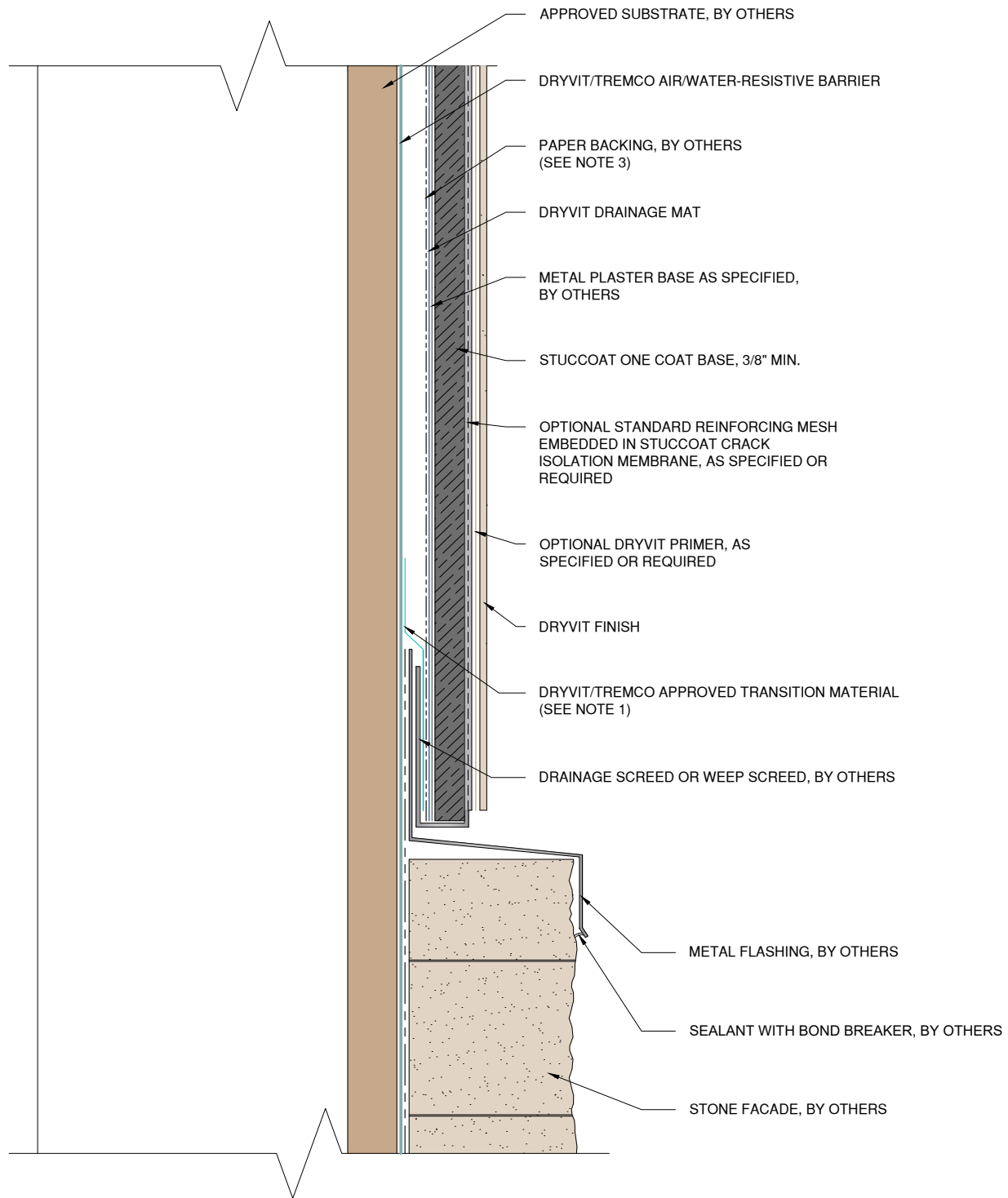
Scale: NTS

Date: 5/2/2025

SCOC 18

www.tremcocpg.com





NOTE:

1. REFER TO PRODUCT DATA SHEETS FOR SPECIFIC APPLICATION METHODS.
2. WALL ASSEMBLY SHALL PROVIDE FOR A MAXIMUM DESIGN DEFLECTION OF $L/360$.
3. PAPER BACKING BY OTHERS IS OPTIONAL WHEN DRYVIT $\frac{3}{16}$ " DRAINAGE MAT IS INSTALLED OVER AWRB.

This detail is for general informational purposes, only. The project design professional determines, in its sole discretion, whether this detail or a functionally equivalent detail is best suited for the project with respect to any architecture, engineering, and design requirements, including any local building code requirements. If this document is not reviewed and the product is not approved for use by a licensed design professional, the customer agrees that the detail may contain substantive flaws requiring correction, and hereby releases Tremco CPG Inc. from any and all liability related to the design and installation of the product. This detail is subject to change without notice. Contact Tremco to ensure you have the most recent version.

StucCoat One Coat® System



Detail: Horizontal Termination at Stone Veneer

File Name:

Drawn by: KAB

Checked by: CW

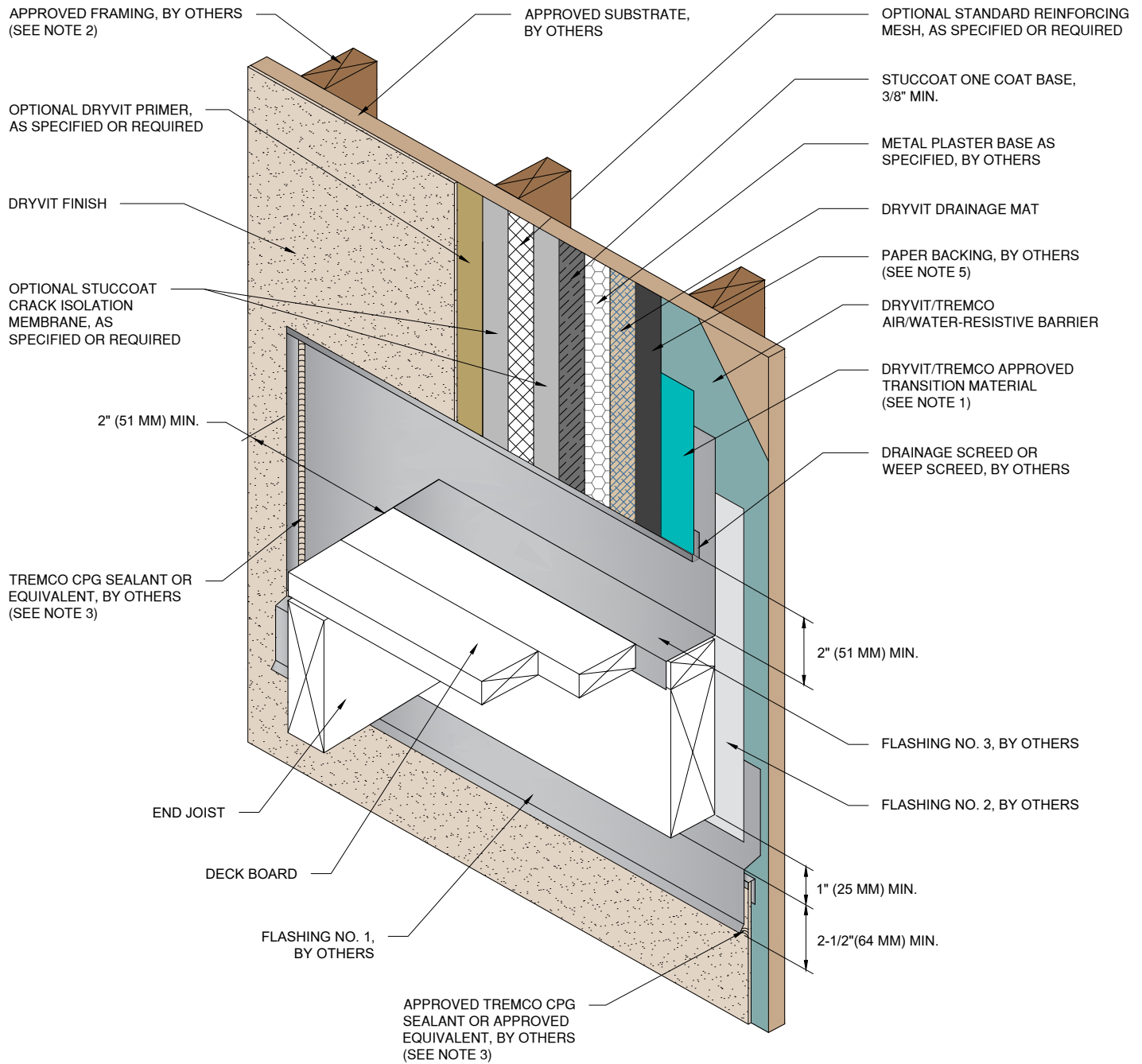
Scale: NTS

Date: 5/2/2025

SCOC 19



www.tremcocpg.com



NOTE:

1. REFER TO PRODUCT DATA SHEETS FOR SPECIFIC APPLICATION METHODS.
2. WALL ASSEMBLY SHALL PROVIDE FOR A MAXIMUM DESIGN DEFLECTION OF $L/360$.
3. BACKER ROD AND SEALANT JOINT SHALL NOT COVER OR OBSTRUCT CASING BEAD WEEP HOLES.
4. DETAIL DOES NOT APPLY TO CANTILEVERED DECKS. CANTILEVERED DECKS REQUIRE JOB SPECIFIC FLASHING DETAILS.
5. PAPER BACKING BY OTHERS IS OPTIONAL WHEN DRYVIT $\frac{3}{16}$ " DRAINAGE MAT IS INSTALLED OVER AWRB.

This detail is for general informational purposes, only. The project design professional determines, in its sole discretion, whether this detail or a functionally equivalent detail is best suited for the project with respect to any architecture, engineering, and design requirements, including any local building code requirements. If this document is not reviewed and the product is not approved for use by a licensed design professional, the customer agrees that the detail may contain substantive flaws requiring correction, and hereby releases Tremco CPG Inc. from any and all liability related to the design and installation of the product. This detail is subject to change without notice. Contact Tremco to ensure you have the most recent version.

StucCoat One Coat® System



Dryvit Technical Support: 800-556-7752

Detail: Termination at Wood Framed Deck

Drawn by: KAB

Checked by: CW

Scale: NTS

Date: 5/2/2025

File Name:

SCOC 20

www.tremcocpg.com



Construction Products Group