

StucCoat® One Coat Securock® ExoAir® 430 System

USG  TREMCO
SECUROCK EXOAIR 430



DS994

A Fire-Rated, Stucco System Assembly for Residential and Commercial Buildings
with Insulated and Crack-Resistant (CRS) Optional Components

StucCoat One Coat Securock ExoAir 430 System Installation Details

Table of Contents

Detail

STUCCOAT ONE COAT SECUROCK EXOAIR 430 SYSTEM	SCOC SE430 1
BOARD JOINT AND FASTENER TREATMENT	SCOC SE430 2
ROUGH OPENING PREPARATION -	SCOC SE430 3
DYMONIC 100 OR EXOAIR DUALFLASH	
OPENING FLASHING INTEGRATION -	SCOC SE430 4
DYMONIC 100 OR EXOAIR DUALFLASH	
ROUGH OPENING PREPARATION -	SCOC SE430 5
EXOAIR 110AT	
OPENING FLASHING INTEGRATION -	SCOC SE430 6
EXOAIR 110AT	
FLANGED WINDOW HEAD	SCOC SE430 7
FLANGED WINDOW JAMB	SCOC SE430 8
FLANGED WINDOW SILL	SCOC SE430 9
OUTSIDE CORNER	SCOC SE430 10
INSIDE CORNER	SCOC SE430 11
PENETRATION	SCOC SE430 12
HORIZONTAL FLASHING AND EXPANSION JOINT	SCOC SE430 13
TERMINATION AT PARAPET - CAP FLASHING	SCOC SE430 14
TERMINATION AT ROOF/WALL INTERSECTION	SCOC SE430 15
HORIZONTAL TERMINATION AT STONE VENEER	SCOC SE430 16
TERMINATION AT WOOD FRAMED DECK	SCOC SE430 17

NOTE:
DRYVIT, TREMCO AND USG MAKE NO REPRESENTATION REGARDING CONFORMITY OF ITS SUGGESTIONS TO MODEL BUILDING CODES, ENGINEERING CRITERIA, SPECIFIC APPLICATIONS, OR PROJECT LOCATIONS. ALL COMPONENTS INDICATED IN ILLUSTRATIONS, AS WELL AS OTHERS THAT MAY BE REQUIRED FOR THE INTEGRITY OF THE SYSTEM SHALL BE DESIGNED, DETAILED, AND ENGINEERED BY REPRESENTATIVES OF THE ARCHITECT, OWNER, OR CONTRACTOR TO BE IN CONFORMANCE WITH MODEL CODES, ARCHITECTURAL, AND ENGINEERING REQUIREMENTS PERTAINING TO SPECIFIC BUILDING PROJECTS.

DRYVIT, TREMCO AND USG MAKE NO WARRANTY, EXPRESSED OR IMPLIED, AS TO THE ARCHITECTURAL DESIGN, ENGINEERING, OR WORKMANSHIP OF PROJECTS UTILIZING DRYVIT SYSTEMS OR PRODUCTS.

THE LIABILITIES OF DRYVIT, TREMCO AND USG SHALL BE AS STATED IN THE DRYVIT STANDARD WARRANTY. CONTACT DRYVIT, TREMCO AND USG FOR A FULL AND COMPLETE COPY OF THE WARRANTY.

This detail is for general informational purposes only. The project design professional determines, in its sole discretion, whether this detail or a functionally equivalent detail is best suited for the project with respect to any architecture, engineering, and design requirements, including any local building code requirements. If this document is not reviewed and the product is not approved for use by a licensed design professional, the customer agrees that the detail may contain substantive flaws requiring correction, and hereby releases Tremco CPG Inc. and USG from any and all liability related to the design and installation of the product. This detail is subject to change without notice. Contact Tremco and USG to ensure you have the most recent version.

StucCoat One Coat® Securock® ExoAir 430 System

 Dryvit Technical Support: 800-556-7752	Detail: Table of Contents				File Name: TOC	 TREMCO Construction Products Group
	Drawn by: KAB	Checked by: CW	Scale: NTS	Date: 5/2/2025		
 SECUROCK EXOAIR 430 <small>Technical Support: 800-230-2424</small>	www.tremcocpg.com					

APPROVED FRAMING, BY OTHERS
(SEE NOTE 2)

TREMCO DYMONIC® 100 OR
TREMCO EXOAIR® 110AT WITH
DYMONIC 100 TERMINATION BEAD
(SEE NOTE 1)

DRAINAGE SCREED OR
WEEP SCREED, BY OTHERS

OPTIONAL SECONDARY
FLASHING, BY OTHERS

TREMCO DYMONIC® 100
(SEE NOTE 1)

SECUROCK® EXOAIR® 430

PAPER BACKING, BY OTHERS
(SEE NOTE 3)

DRYVIT DRAINAGE MAT
(OPTIONAL, IF SPECIFIED)

METAL PLASTER BASE AS
SPECIFIED, BY OTHERS

STUCCOAT ONE COAT BASE, 3/8" MIN.

STANDARD REINFORCING MESH

STUCCOAT CRACK ISOLATION
MEMBRANE

DRYVIT PRIMER, AS SPECIFIED OR
REQUIRED

WEATHERLASTIC® FINISH

1" MIN

1" MIN

OPTIONAL SECONDARY
METAL FLASHING

SECTION DETAIL

NOTE:

1. REFER TO PRODUCT DATA SHEETS FOR SPECIFIC APPLICATION METHODS.
2. WALL ASSEMBLY SHALL PROVIDE FOR A MAXIMUM DESIGN DEFLECTION OF L/360.
3. PAPER BACKING BY OTHERS IS OPTIONAL WHEN DRYVIT $\frac{3}{16}$ " DRAINAGE MAT IS INSTALLED OVER AWRB.

This detail is for general informational purposes only. The project design professional determines, in its sole discretion, whether this detail or a functionally equivalent detail is best suited for the project with respect to any architecture, engineering, and design requirements, including any local building code requirements. If this document is not reviewed and the product is not approved for use by a licensed design professional, the customer agrees that the detail may contain substantive flaws requiring correction, and hereby releases Tremco CPG Inc. and USG from any and all liability related to the design and installation of the product. This detail is subject to change without notice. Contact Tremco and USG to ensure you have the most recent version.

StucCoat One Coat® Securock® ExoAir 430 System



Dryvit Technical Support: 800-556-7752



SECUROROCK® EXOAIR® 430

Technical Support: 800-556-9464

Detail: StucCoat One Coat Securock ExoAir 430 System

Drawn by: KAB

Checked by: CW

Scale: NTS

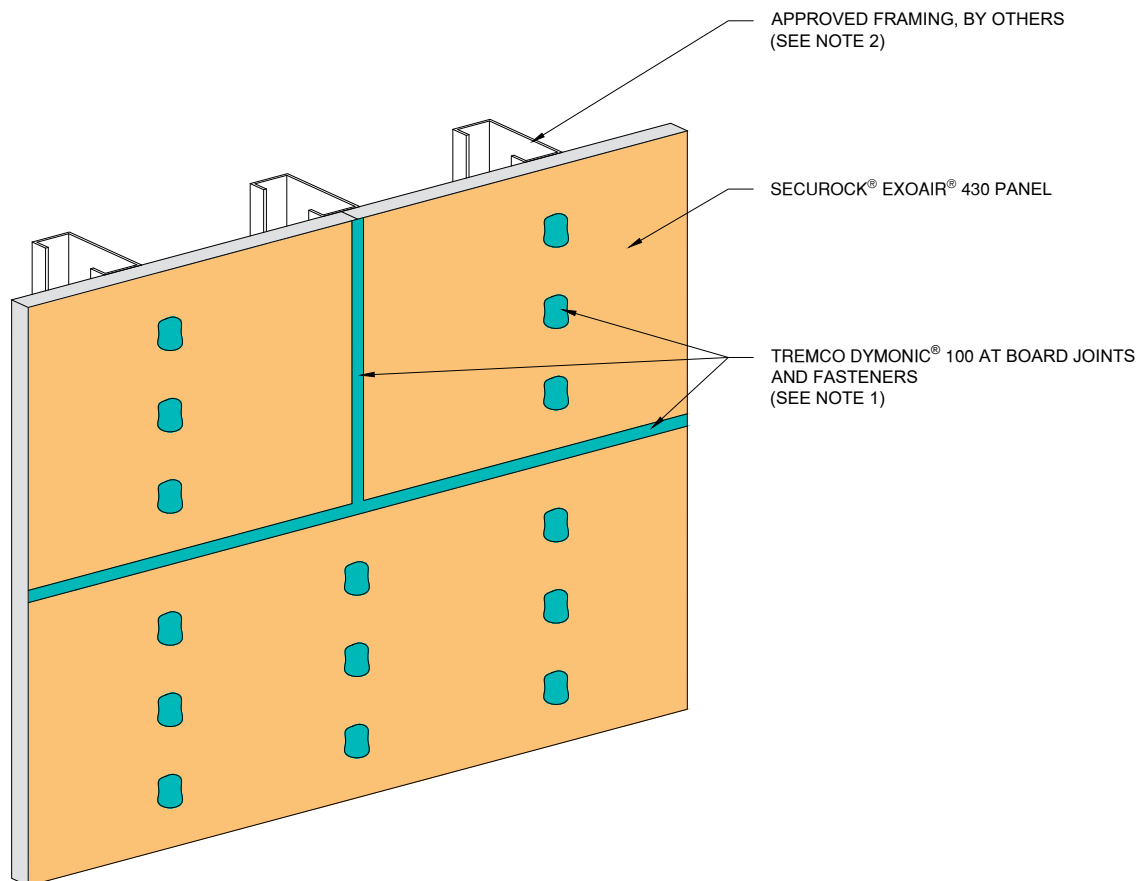
Date: 5/2/2025

File Name:

SCOC SE430 1

www.tremcocpg.com








NOTE:

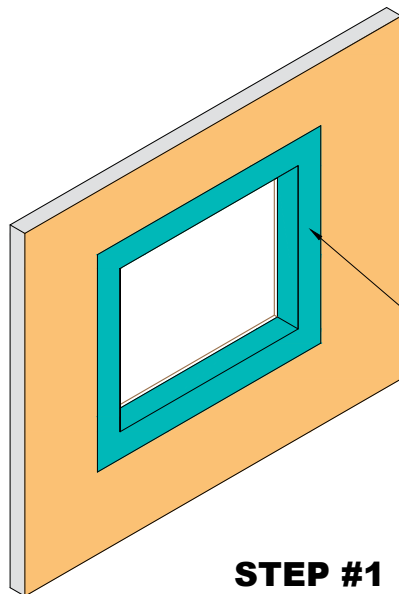
1. APPLY DYMONIC 100 ENSURING MINIMUM OVERLAP OF 3/4" (19 MM) ONTO EACH PANEL AT 40 MILS.
2. WALL ASSEMBLY SHALL PROVIDE FOR A MAXIMUM DESIGN DEFLECTION OF L/360.

This detail is for general informational purposes only. The project design professional determines, in its sole discretion, whether this detail or a functionally equivalent detail is best suited for the project with respect to any architecture, engineering, and design requirements, including any local building code requirements. If this document is not reviewed and the product is not approved for use by a licensed design professional, the customer agrees that the detail may contain substantive flaws requiring correction, and hereby releases Tremco CPG Inc. and USG from any and all liability related to the design and installation of the product. This detail is subject to change without notice. Contact Tremco and USG to ensure you have the most recent version.

StucCoat One Coat® Securock® ExoAir 430 System

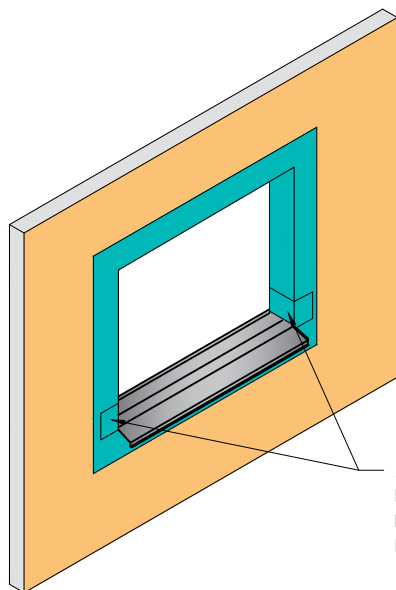
<div> Dryvit Technical Support: 800-556-7752</div>	Detail: Board Joint and Fastener Treatment				File Name: SCOC SE430 2	<div> Construction Products Group</div>
<div> SECUROCK EXOAIR 430 Technical Support: 800-556-9464</div>	Drawn by: KAB	Checked by: CW	Scale: NTS	Date: 5/2/2025		
www.tremcocpg.com						

www.tremcocpg.com



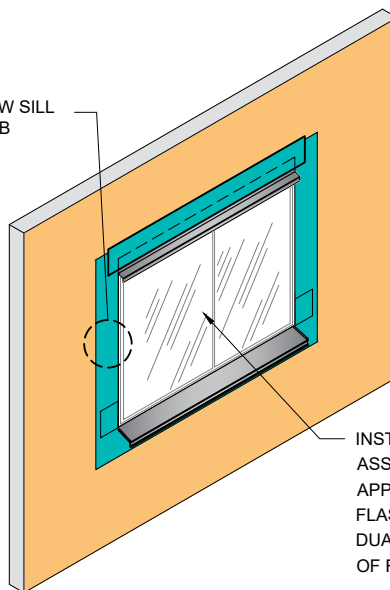
REFER TO ROUGH OPENING
PREPARATION DETAIL FOR PREPARATION
OF OPENING PRIOR TO FLASHING
INSTALLATION

STEP #1



APPLY TREMCO DYMONIC® 100 OR
EXOAIR DUALFLASH AT 40 MILS
LAPPING OVER LIP OF SILL PAN
FLASHING.

STEP #2



REFER TO WINDOW SILL
DETAILS FOR JAMB
DETAIL

INSTALL WINDOW UNIT AND
ASSOCIATED FLASHINGS AND
APPLY TREMCO DYMONIC® 100
FLASHING SYSTEM OR EXOAIR
DUALFLASH OVER VERTICAL LEG
OF FLASHING

STEP #3

This detail is for general informational purposes only. The project design professional determines, in its sole discretion, whether this detail or a functionally equivalent detail is best suited for the project with respect to any architecture, engineering, and design requirements, including any local building code requirements. If this document is not reviewed and the product is not approved for use by a licensed design professional, the customer agrees that the detail may contain substantive flaws requiring correction, and hereby releases Tremco CPG Inc. and USG from any and all liability related to the design and installation of the product. This detail is subject to change without notice. Contact Tremco and USG to ensure you have the most recent version.

StucCoat One Coat® Securock® ExoAir 430 System



Dryvit Technical Support: 800-556-7752



SECUROCK EXOAIR 430

Technical Support: 800-209-9464

Detail: Opening Flashing Integration - Tremco Dymonic 100 or
ExoAir DualFlash Option

Drawn by: KAB

Checked by: CW

Scale: NTS

Date: 5/2/2025

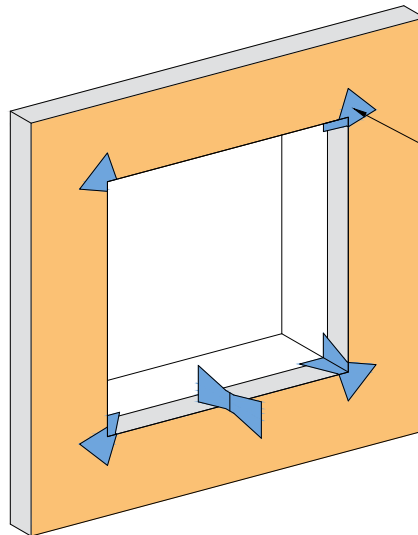
File Name:

SCOC SE430 4

www.tremcocpg.com

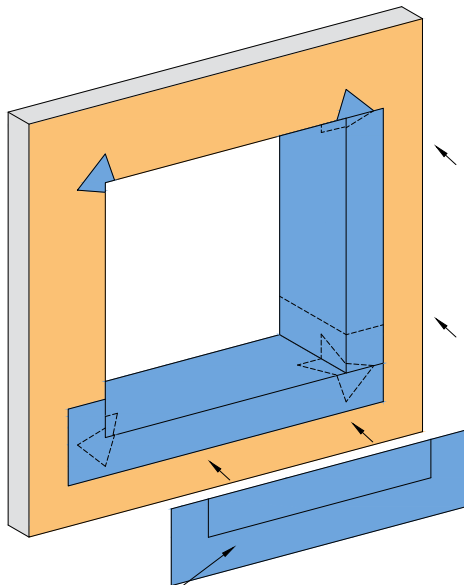


Construction Products Group



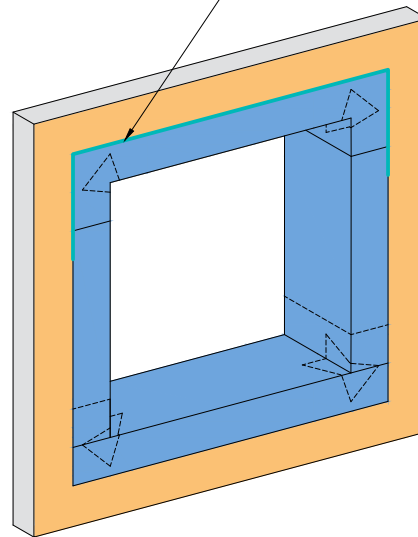
TREMCO EXOAIR® 110AT BOW TIES
INSTALLED AT ROUGH OPENING CORNERS

STEP #1



APPLY TREMCO EXOAIR® 110AT 3" MIN INTO
ROUGH OPENING AND EXTERIOR FACE OF
WALL AT SILLS, JAMBS AND HEADS

STEP #2



APPLY TREMCO DYMONIC® 100 ACROSS
EDGE OF TREMCO® EXOAIR 110AT AT
WINDOW HEAD AND DOWN JAMBS 6"

STEP #3

This detail is for general informational purposes only. The project design professional determines, in its sole discretion, whether this detail or a functionally equivalent detail is best suited for the project with respect to any architecture, engineering, and design requirements, including any local building code requirements. If this document is not reviewed and the product is not approved for use by a licensed design professional, the customer agrees that the detail may contain substantive flaws requiring correction, and hereby releases Tremco CPG Inc. and USG from any and all liability related to the design and installation of the product. This detail is subject to change without notice. Contact Tremco and USG to ensure you have the most recent version.

StucCoat One Coat® Securock® ExoAir 430 System



Dryvit Technical Support: 800-556-7752



SECUROCK® EXOAIR 430

Technical Support: 800-556-7752

Detail: Rough Opening Preparation - Tremco ExoAir 110AT Option

Drawn by: KAB

Checked by: CW

Scale: NTS

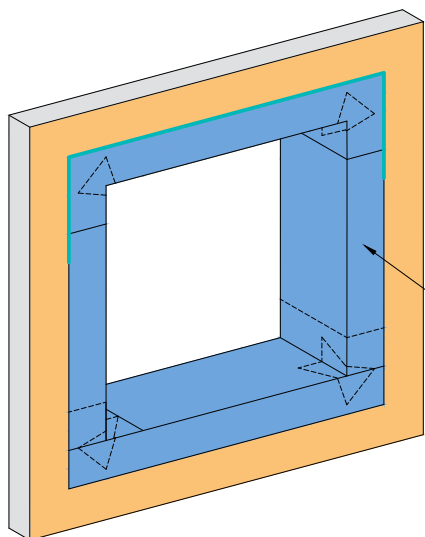
Date: 5/2/2025

File Name:

SCOC SE430 5

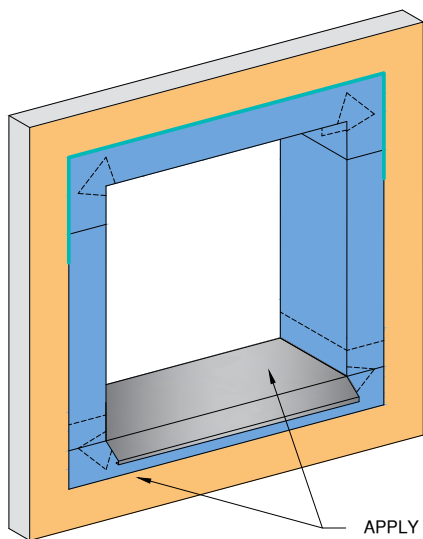
www.tremcocpg.com





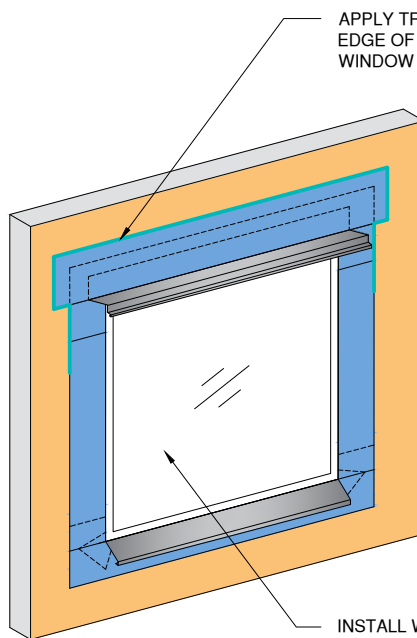
REFER TO OPENING PREPARATION
DETAILS FOR DETAILING OF OPENING
PRIOR TO FLASHING INSTALLATION

STEP #1



APPLY TREMCO EXOAIR® 110AT
LAPPING OVER LIP OF SILL PAN FLASHING
(SEE NOTE 1)

STEP #2



APPLY TREMCO DYMONIC® 100 ACROSS
EDGE OF TREMCO® EXOAIR 110AT AT
WINDOW HEAD AND DOWN JAMBS 6"

INSTALL WINDOW UNIT AND
ASSOCIATED FLASHINGS AND
APPLY TREMCO EXOAIR® 110AT
OVER VERTICAL LEG OF
FLASHING (SEE NOTE 1)

STEP #3

NOTE:

1. INSTALL WINDOW UNIT AND ASSOCIATED FLASHINGS
PER MANUFACTURER'S RECOMMENDATIONS, CODE
REQUIREMENTS AND PROJECT DOCUMENTS.

This detail is for general informational purposes only. The project design professional determines, in its sole discretion, whether this detail or a functionally equivalent detail is best suited for the project with respect to any architecture, engineering, and design requirements, including any local building code requirements. If this document is not reviewed and the product is not approved for use by a licensed design professional, the customer agrees that the detail may contain substantive flaws requiring correction, and hereby releases Tremco CPG Inc. and USG from any and all liability related to the design and installation of the product. This detail is subject to change without notice. Contact Tremco and USG to ensure you have the most recent version.

StucCoat One Coat® Securock® ExoAir 430 System



Dryvit Technical Support: 800-556-7752



SECUROROCK EXOAIR 430

Technical Support: 800-209-9464

Detail: Opening Flashing Integration - Tremco ExoAir 110AT Option

Drawn by: KAB

Checked by: CW

Scale: NTS

Date: 5/2/2025

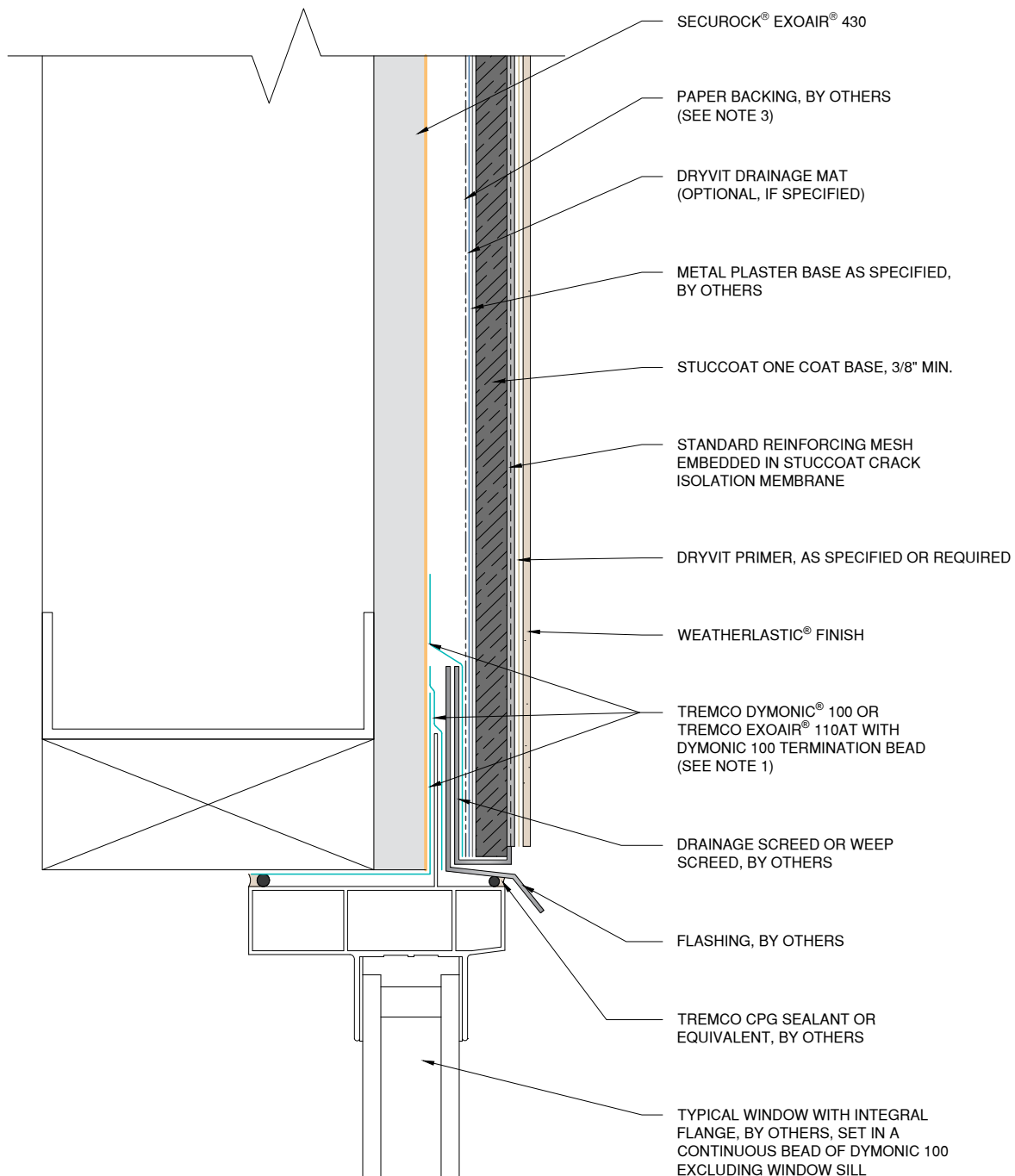
File Name:

SCOC SE430 6

www.tremcocpg.com



Construction Products Group







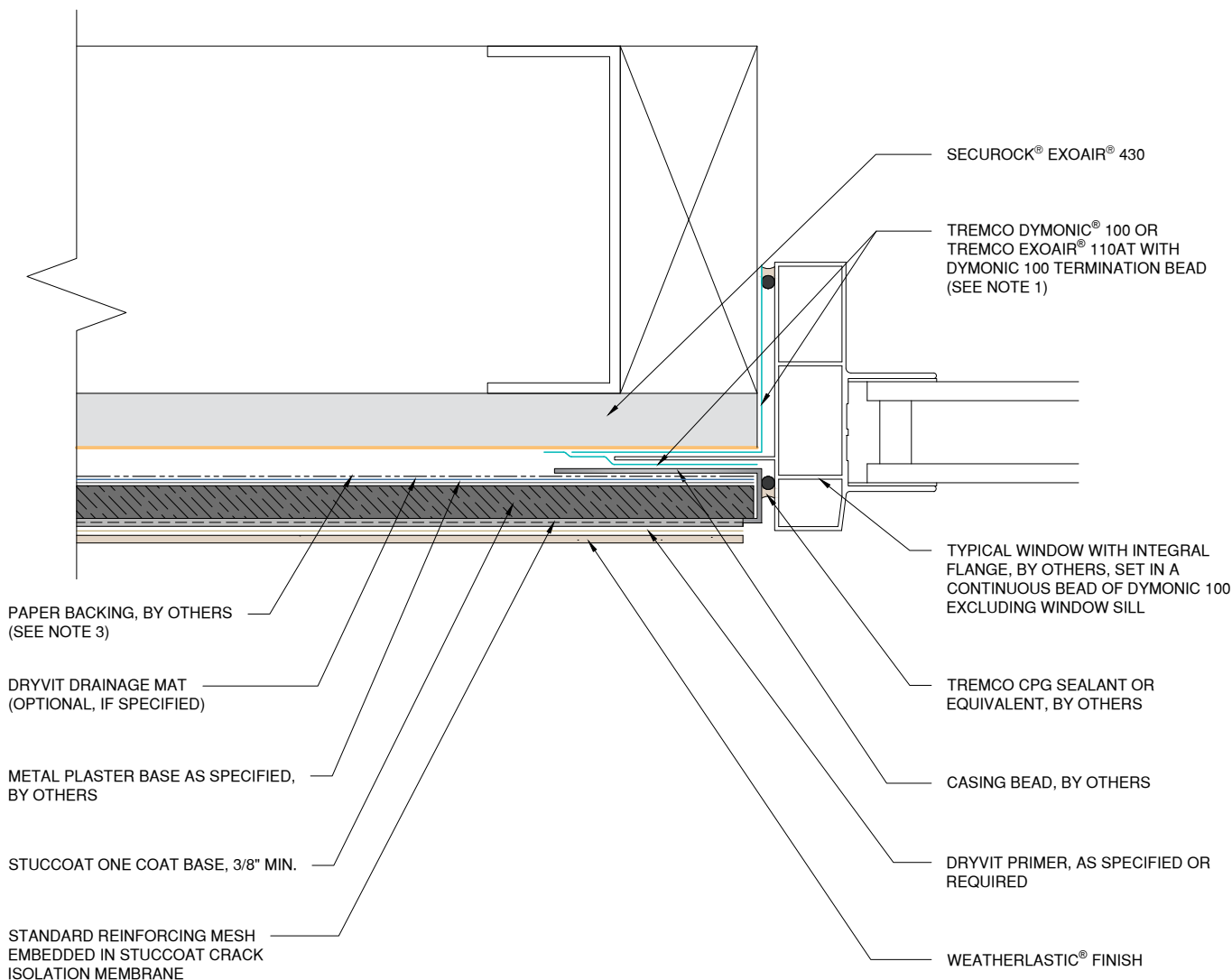
NOTE:

1. REFER TO PRODUCT DATA SHEETS FOR SPECIFIC APPLICATION METHODS.
2. WALL ASSEMBLY SHALL PROVIDE FOR A MAXIMUM DESIGN DEFLECTION OF L/360.
3. PAPER BACKING BY OTHERS IS OPTIONAL WHEN DRYVIT $\frac{3}{16}$ " DRAINAGE MAT IS INSTALLED OVER AWRB.

This detail is for general informational purposes only. The project design professional determines, in its sole discretion, whether this detail or a functionally equivalent detail is best suited for the project with respect to any architecture, engineering, and design requirements, including any local building code requirements. If this document is not reviewed and the product is not approved for use by a licensed design professional, the customer agrees that the detail may contain substantive flaws requiring correction, and hereby releases Tremco CPG Inc. and USG from any and all liability related to the design and installation of the product. This detail is subject to change without notice. Contact Tremco and USG to ensure you have the most recent version.

StucCoat One Coat® Securock® ExoAir 430 System

<div><div>Dryvit Technical Support: 800-556-7752</div></div>	Detail: Flanged Window Head				File Name: SCOC SE430 7	<div><div>TREMCO Construction Products Group</div></div>
<div><div>SECUROCK® EXOAIR® 430</div><div>Technical Support: 800-209-9464</div></div>	Drawn by: KAB	Checked by: CW	Scale: NTS	Date: 5/2/2025		
www.tremcocpg.com						







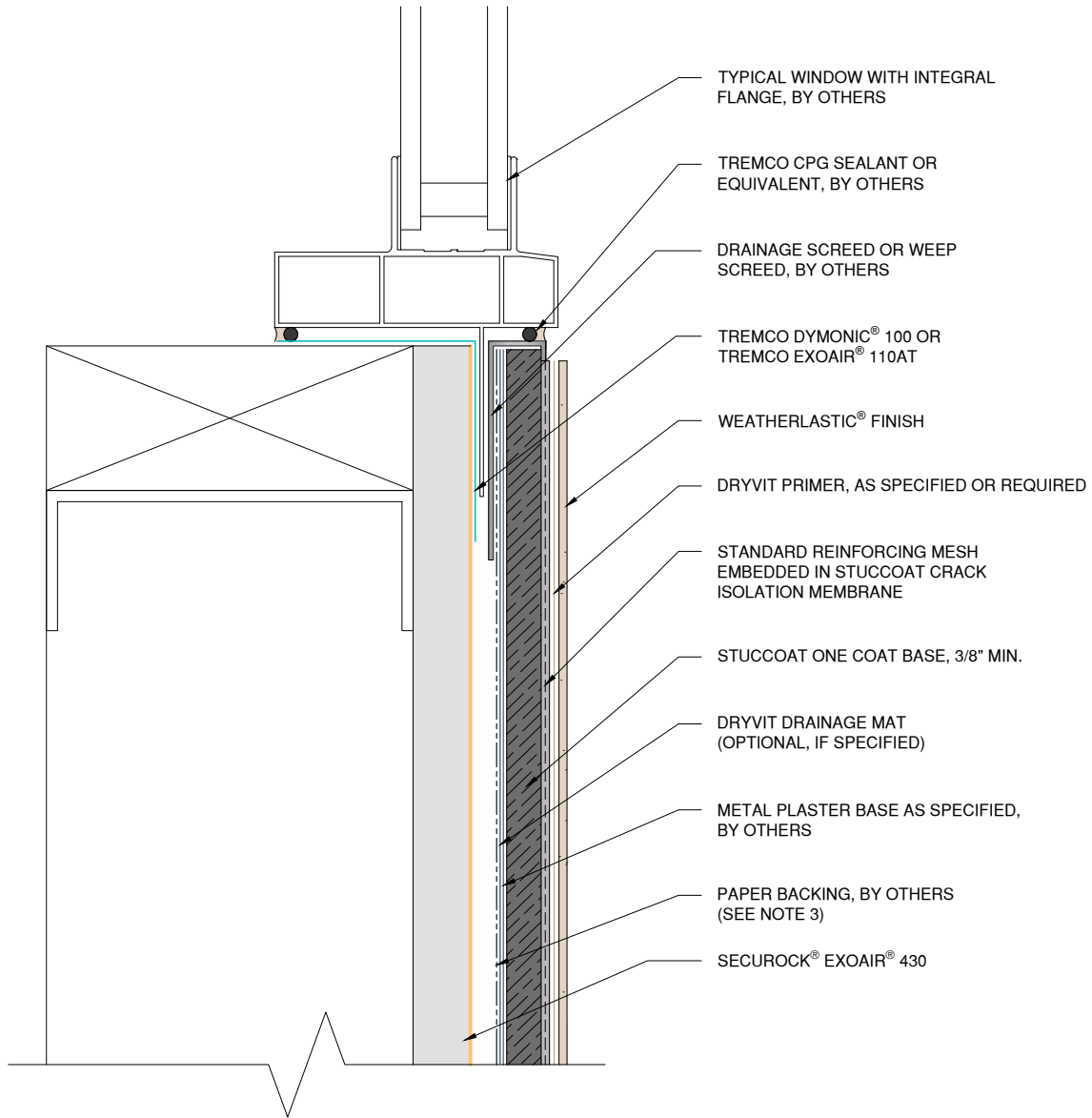
NOTE:

1. REFER TO PRODUCT DATA SHEETS FOR SPECIFIC APPLICATION METHODS.
2. WALL ASSEMBLY SHALL PROVIDE FOR A MAXIMUM DESIGN DEFLECTION OF L/360.
3. PAPER BACKING BY OTHERS IS OPTIONAL WHEN DRYVIT $\frac{3}{16}$ " DRAINAGE MAT IS INSTALLED OVER AWRB.

This detail is for general informational purposes only. The project design professional determines, in its sole discretion, whether this detail or a functionally equivalent detail is best suited for the project with respect to any architecture, engineering, and design requirements, including any local building code requirements. If this document is not reviewed and the product is not approved for use by a licensed design professional, the customer agrees that the detail may contain substantive flaws requiring correction, and hereby releases Tremco CPG Inc. and USG from any and all liability related to the design and installation of the product. This detail is subject to change without notice. Contact Tremco and USG to ensure you have the most recent version.

StucCoat One Coat® Securock® ExoAir 430 System

<div>Dryvit</div> <div>Dryvit Technical Support: 800-556-7752</div>	Detail: Flanged Window Jamb				File Name: SCOC SE430 8	<div>TREMCO</div> <div>Construction Products Group</div>
	Drawn by: KAB	Checked by: CW	Scale: NTS	Date: 5/2/2025		
	<div></div> <div>SECUROCK EXOAIR® 430</div> <div>Technical Support: 800-209-9464</div>	www.tremcocpg.com				






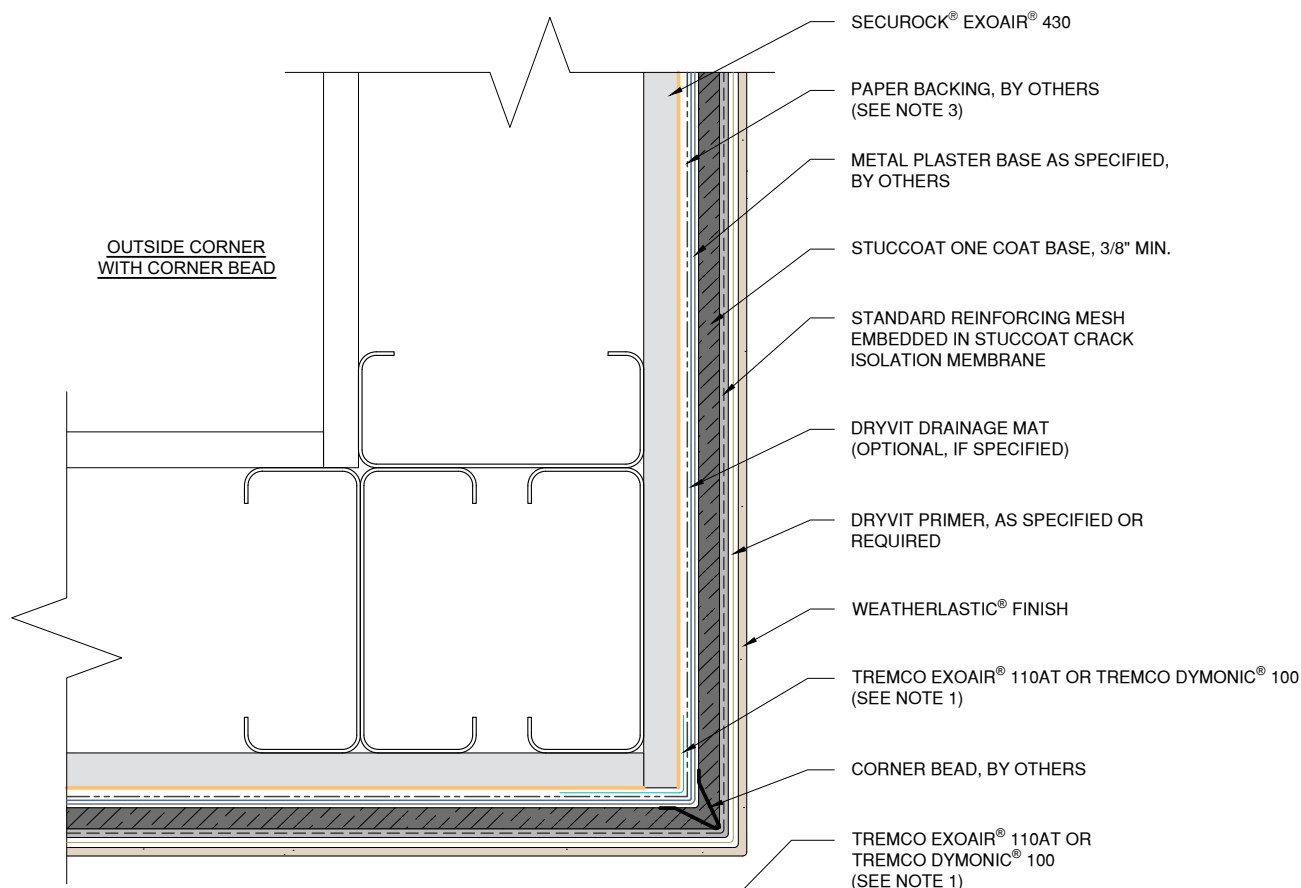
NOTE:

1. REFER TO PRODUCT DATA SHEETS FOR SPECIFIC APPLICATION METHODS.
2. WALL ASSEMBLY SHALL PROVIDE FOR A MAXIMUM DESIGN DEFLECTION OF L/360.
3. PAPER BACKING BY OTHERS IS OPTIONAL WHEN DRYVIT $\frac{3}{16}$ " DRAINAGE MAT IS INSTALLED OVER AWRB.

This detail is for general informational purposes only. The project design professional determines, in its sole discretion, whether this detail or a functionally equivalent detail is best suited for the project with respect to any architecture, engineering, and design requirements, including any local building code requirements. If this document is not reviewed and the product is not approved for use by a licensed design professional, the customer agrees that the detail may contain substantive flaws requiring correction, and hereby releases Tremco CPG Inc. and USG from any and all liability related to the design and installation of the product. This detail is subject to change without notice. Contact Tremco and USG to ensure you have the most recent version.

StucCoat One Coat® Securock® ExoAir 430 System

 Dryvit Technical Support: 800-556-7752	Detail: Flanged Window Sill				File Name: SCOC SE430 9	 TREMCO Construction Products Group
 SECUROROCK EXOAIR® 430 Technical Support: 800-209-9464	Drawn by: KAB	Checked by: CW	Scale: NTS	Date: 5/2/2025		
www.tremcocpg.com						



SECUROCK® EXOAIR® 430

PAPER BACKING, BY OTHERS (SEE NOTE 3)

METAL PLASTER BASE AS SPECIFIED, BY OTHERS

STUCCOAT ONE COAT BASE, 3/8" MIN.

STANDARD REINFORCING MESH EMBEDDED IN STUCCO CRACK ISOLATION MEMBRANE

DRYVIT DRAINAGE MAT (OPTIONAL, IF SPECIFIED)

DRYVIT PRIMER, AS SPECIFIED OR REQUIRED

WEATHERLASTIC® FINISH

TYPICAL OUTSIDE CORNER WITHOUT CORNER BEAD

NOTE:

1. REFER TO PRODUCT DATA SHEETS FOR SPECIFIC APPLICATION METHODS.
2. WALL ASSEMBLY SHALL PROVIDE FOR A MAXIMUM DESIGN DEFLECTION OF L/360.
3. PAPER BACKING BY OTHERS IS OPTIONAL WHEN DRYVIT $\frac{3}{16}$ " DRAINAGE MAT IS INSTALLED OVER AWRB.

This detail is for general informational purposes only. The project design professional determines, in its sole discretion, whether this detail or a functionally equivalent detail is best suited for the project with respect to any architecture, engineering, and design requirements, including any local building code requirements. If this document is not reviewed and the product is not approved for use by a licensed design professional, the customer agrees that the detail may contain substantive flaws requiring correction, and hereby releases Tremco CPG Inc. and USG from any and all liability related to the design and installation of the product. This detail is subject to change without notice. Contact Tremco and USG to ensure you have the most recent version.

StucCoat One Coat® Securock® ExoAir 430 System



Dryvit Technical Support: 800-556-7752



SECUROCK® EXOAIR® 430

Technical Support: 800-556-7752

Detail: Outside Corner

Drawn by: KAB

Checked by: CW

Scale: NTS

Date: 5/2/2025

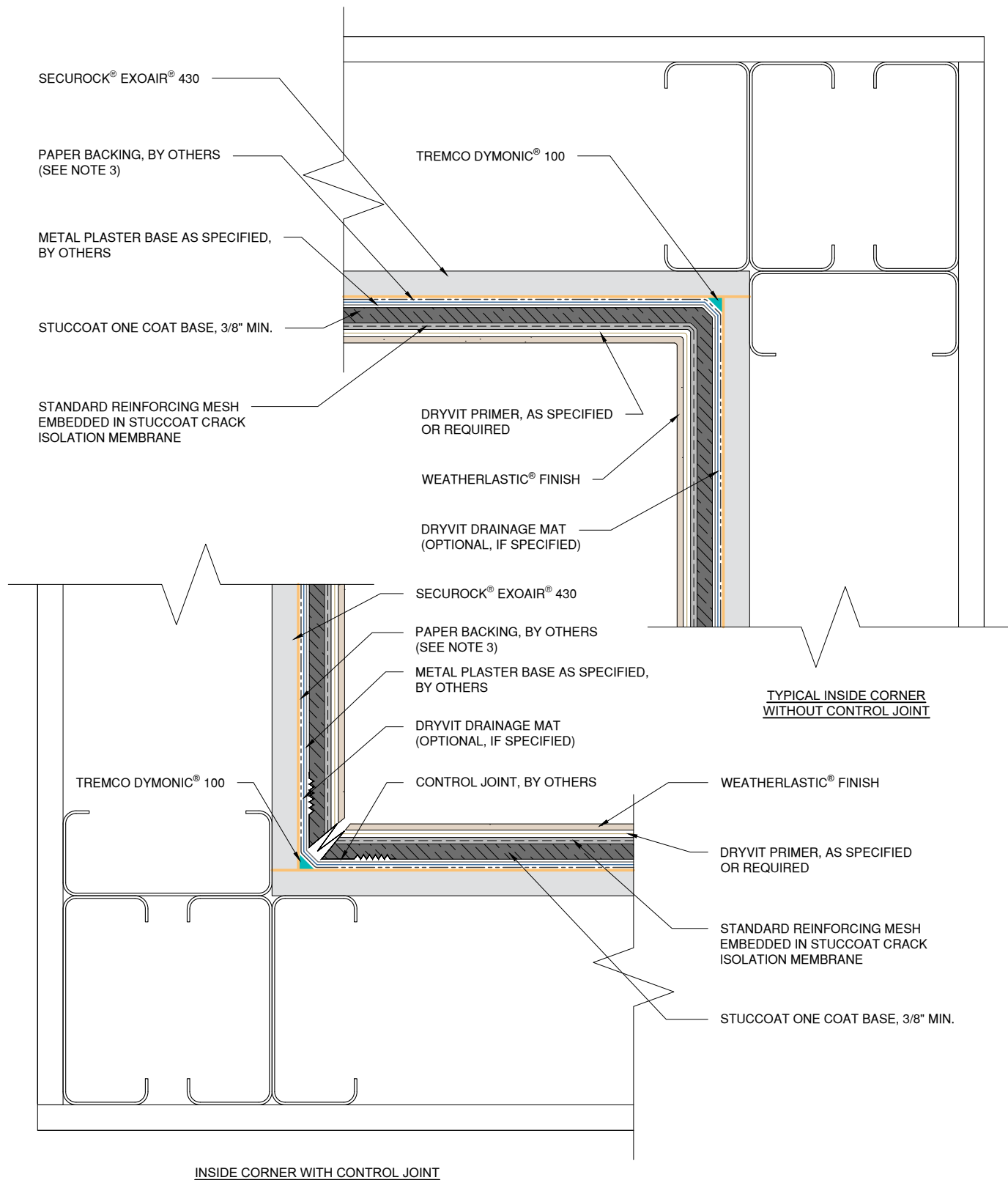
File Name:

SCOC SE430 10



Construction Products Group

www.tremcocpg.com






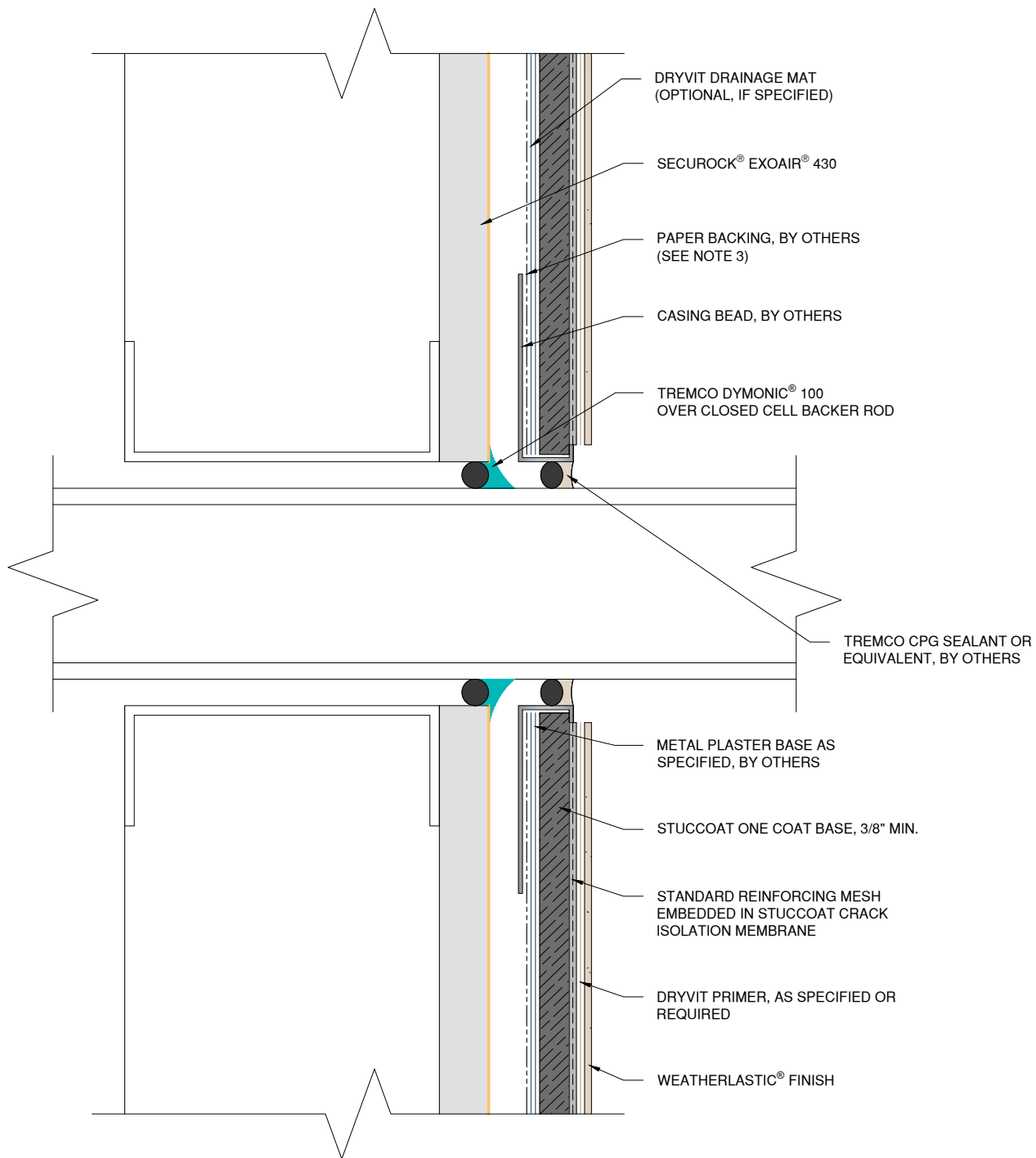
NOTE:

1. REFER TO PRODUCT DATA SHEETS FOR SPECIFIC APPLICATION METHODS.
2. WALL ASSEMBLY SHALL PROVIDE FOR A MAXIMUM DESIGN DEFLECTION OF L/360.
3. PAPER BACKING BY OTHERS IS OPTIONAL WHEN DRYVIT $\frac{3}{16}$ " DRAINAGE MAT IS INSTALLED OVER AWRB.

This detail is for general informational purposes only. The project design professional determines, in its sole discretion, whether this detail or a functionally equivalent detail is best suited for the project with respect to any architecture, engineering, and design requirements, including any local building code requirements. If this document is not reviewed and the product is not approved for use by a licensed design professional, the customer agrees that the detail may contain substantive flaws requiring correction, and hereby releases Tremco CPG Inc. and USG from any and all liability related to the design and installation of the product. This detail is subject to change without notice. Contact Tremco and USG to ensure you have the most recent version.

StucCoat One Coat® Securock® ExoAir 430 System

 <p>Dryvit Technical Support: 800-556-7752</p>	Detail: Inside Corner				File Name:	
	Drawn by: KAB	Checked by: CW	Scale: NTS	Date: 5/2/2025	SCOC SE430 11	
 <p>SECURLOCK EXOAIR 430</p> <p>Technical Support: 800-556-9464</p>	www.tremcocpg.com				 <p>Construction Products Group</p>	



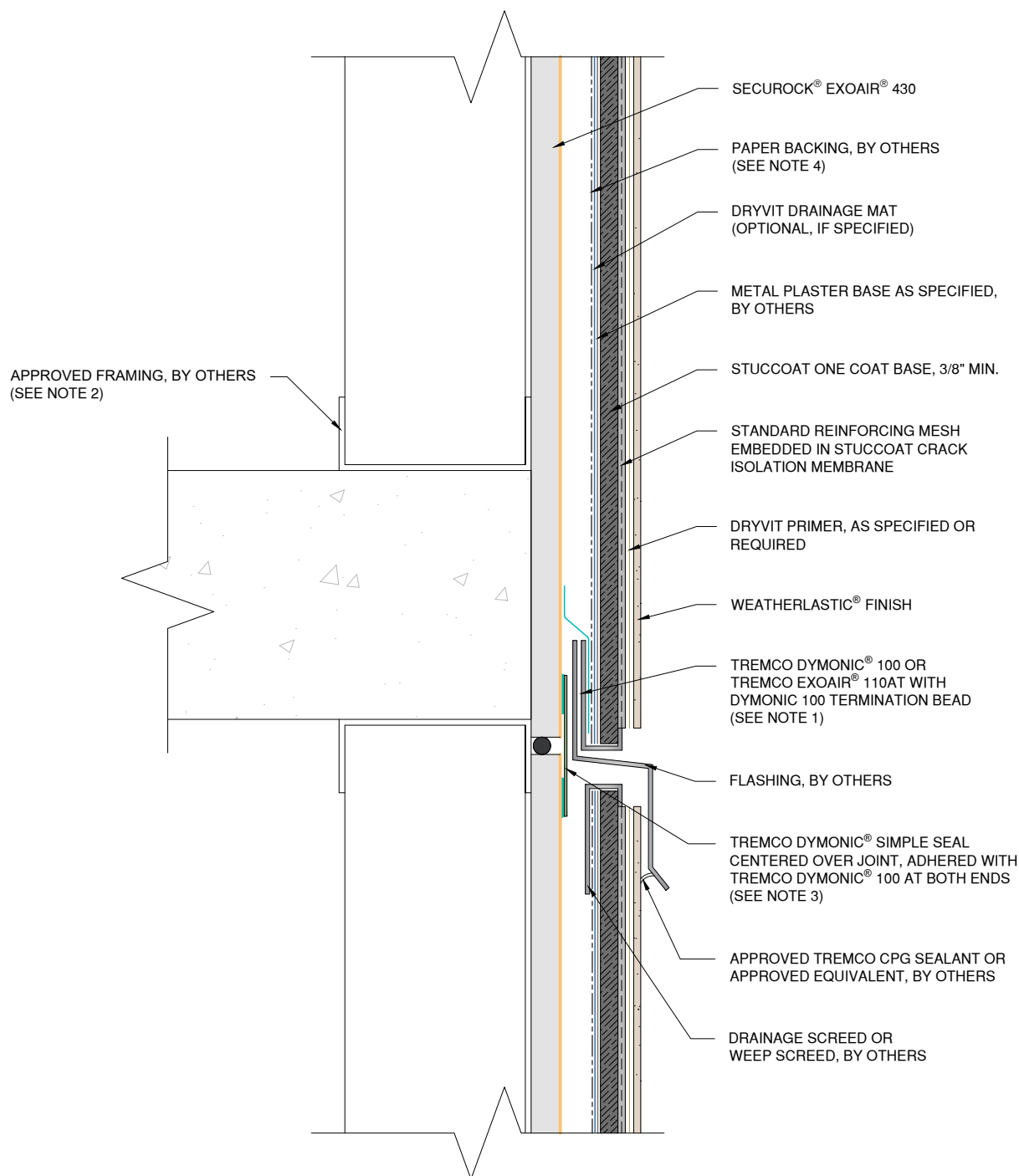
NOTE:

1. REFER TO PRODUCT DATA SHEETS FOR SPECIFIC APPLICATION METHODS.
2. WALL ASSEMBLY SHALL PROVIDE FOR A MAXIMUM DESIGN DEFLECTION OF L/360.
3. PAPER BACKING BY OTHERS IS OPTIONAL WHEN DRYVIT $\frac{3}{16}$ " DRAINAGE MAT IS INSTALLED OVER AWRB.

This detail is for general informational purposes only. The project design professional determines, in its sole discretion, whether this detail or a functionally equivalent detail is best suited for the project with respect to any architecture, engineering, and design requirements, including any local building code requirements. If this document is not reviewed and the product is not approved for use by a licensed design professional, the customer agrees that the detail may contain substantive flaws requiring correction, and hereby releases Tremco CPG Inc. and USG from any and all liability related to the design and installation of the product. This detail is subject to change without notice. Contact Tremco and USG to ensure you have the most recent version.

StucCoat One Coat® Securock® ExoAir 430 System

 <small>Dryvit Technical Support: 800-556-7752</small>  <small>SECUROCK® EXOAIR 430</small> <small>Technical Support: 800-209-9464</small>	Detail: Penetration				File Name:	 <small>Construction Products Group</small>
	Drawn by: KAB	Checked by: CW	Scale: NTS	Date: 5/2/2025	SCOC SE430 12	
	www.tremcocpg.com					






NOTE:

1. REFER TO PRODUCT DATA SHEETS FOR SPECIFIC APPLICATION METHODS.
2. WALL ASSEMBLY SHALL PROVIDE FOR A MAXIMUM DESIGN DEFLECTION OF $L/360$.
3. DYMONIC 100 MUST NOT BE LEFT EXPOSED TO U.V.
4. PAPER BACKING BY OTHERS IS OPTIONAL WHEN DRYVIT $\frac{3}{16}$ " DRAINAGE MAT IS INSTALLED OVER AWRB.

This detail is for general informational purposes only. The project design professional determines, in its sole discretion, whether this detail or a functionally equivalent detail is best suited for the project with respect to any architecture, engineering, and design requirements, including any local building code requirements. If this document is not reviewed and the product is not approved for use by a licensed design professional, the customer agrees that the detail may contain substantive flaws requiring correction, and hereby releases Tremco CPG Inc. and USG from any and all liability related to the design and installation of the product. This detail is subject to change without notice. Contact Tremco and USG to ensure you have the most recent version.

StucCoat One Coat® Securock® ExoAir 430 System

 <small>Dryvit Technical Support: 800-556-7752</small>	Detail: Horizontal Flashing & Expansion Joint				File Name:	 <small>Construction Products Group</small>
	Drawn by: KAB	Checked by: CW	Scale: NTS	Date: 5/2/2025	SCOC SE430 13	
 <small>SECUROCK® EXOAIR® 430</small> <small>Technical Support: 800-556-9464</small>	www.tremcocpg.com					

ENGINEERED FRAMING SYSTEM BY
PREBUCK LLC OR FUNCTIONAL EQUIVALENT

TREMCO ROOF ASSEMBLY
OR FUNCTIONAL
EQUIVALENT, BY OTHERS

EXTEND OVER TOP OF
PARAPET AND FASTENED TO
OPPOSITE FACE

METAL CAP FLASHING,
BY OTHERS

TREMCO EXOAIR® 110AT OR
TREMCO DYMONIC® 100
(SEE NOTE 1)

DRAINAGE SCREED OR WEEP
SCREED, BY OTHERS

DRYVIT DRAINAGE MAT
(OPTIONAL, IF SPECIFIED)

SECUROCK® EXOAIR® 430

PAPER BACKING, BY OTHERS
(SEE NOTE 3)

METAL PLASTER BASE AS SPECIFIED,
BY OTHERS

STUCCOAT ONE COAT BASE, 3/8" MIN.

STANDARD REINFORCING MESH
EMBEDDED IN STUCCOAT CRACK
ISOLATION MEMBRANE

DRYVIT PRIMER, AS SPECIFIED OR
REQUIRED

WEATHERLASTIC® FINISH

NOTE:

1. REFER TO PRODUCT DATA SHEETS FOR SPECIFIC APPLICATION METHODS.
2. WALL ASSEMBLY SHALL PROVIDE FOR A MAXIMUM DESIGN DEFLECTION OF L/360.
3. PAPER BACKING BY OTHERS IS OPTIONAL WHEN DRYVIT $\frac{3}{16}$ " DRAINAGE MAT IS INSTALLED OVER AWRB.

This detail is for general informational purposes only. The project design professional determines, in its sole discretion, whether this detail or a functionally equivalent detail is best suited for the project with respect to any architecture, engineering, and design requirements, including any local building code requirements. If this document is not reviewed and the product is not approved for use by a licensed design professional, the customer agrees that the detail may contain substantive flaws requiring correction, and hereby releases Tremco CPG Inc. and USG from any and all liability related to the design and installation of the product. This detail is subject to change without notice. Contact Tremco and USG to ensure you have the most recent version.

StucCoat One Coat® Securock® ExoAir 430 System



Dryvit Technical Support: 800-556-7752



SECUROROCK EXOAIR 430

Technical Support: 800-556-7752

Detail: Termination at Parapet - Cap Flashing

Drawn by: KAB

Checked by: CW

Scale: NTS

Date: 5/2/2025

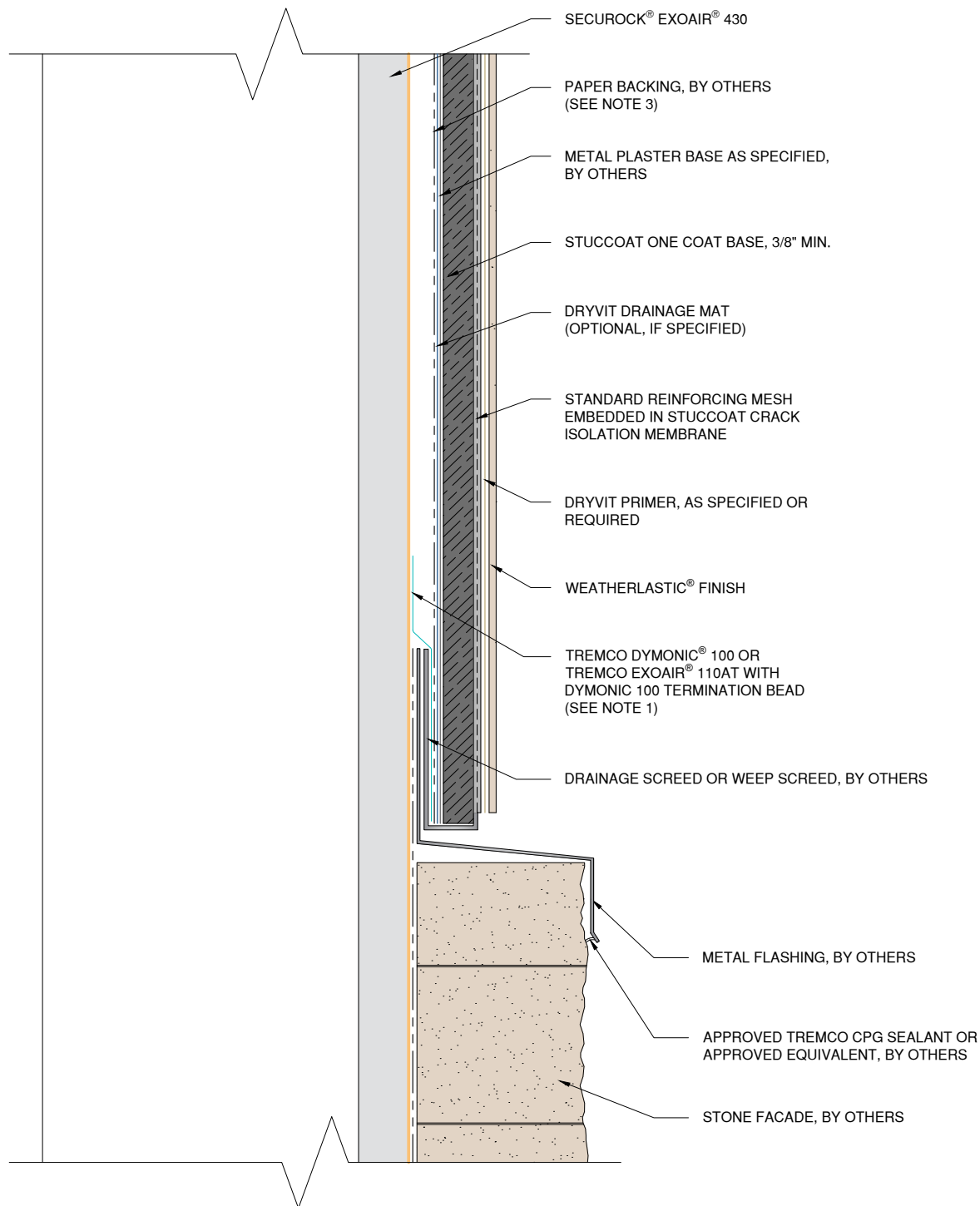
File Name:

SCOC SE430 14



Construction Products Group

www.tremcocpg.com



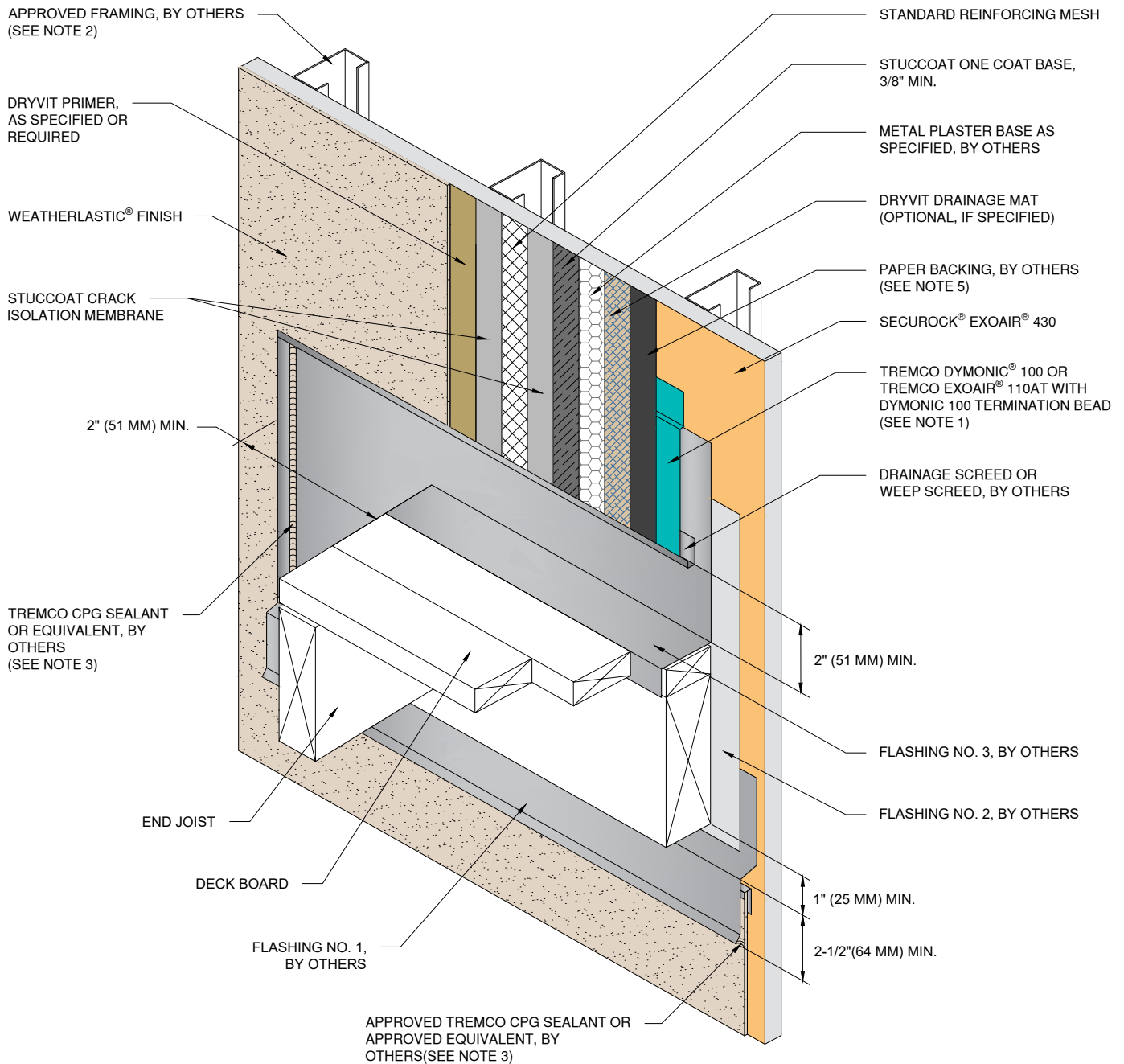
NOTE:

1. REFER TO PRODUCT DATA SHEETS FOR SPECIFIC APPLICATION METHODS.
2. WALL ASSEMBLY SHALL PROVIDE FOR A MAXIMUM DESIGN DEFLECTION OF L/360.
3. PAPER BACKING BY OTHERS IS OPTIONAL WHEN DRYVIT $\frac{3}{16}$ " DRAINAGE MAT IS INSTALLED OVER AWRB.

This detail is for general informational purposes only. The project design professional determines, in its sole discretion, whether this detail or a functionally equivalent detail is best suited for the project with respect to any architecture, engineering, and design requirements, including any local building code requirements. If this document is not reviewed and the product is not approved for use by a licensed design professional, the customer agrees that the detail may contain substantive flaws requiring correction, and hereby releases Tremco CPG Inc. and USG from any and all liability related to the design and installation of the product. This detail is subject to change without notice. Contact Tremco and USG to ensure you have the most recent version.

StucCoat One Coat® Securock® ExoAir 430 System

<div> Dryvit Technical Support: 800-556-7752</div>	Detail: Horizontal Termination at Stone Veneer				File Name: SCOC SE430 16	<div> Construction Products Group</div>
	Drawn by: KAB	Checked by: CW	Scale: NTS	Date: 5/2/2025		
	<div> SECUROCK® EXOAIR® 430 <small>Technical Support: 800-556-9464</small></div> <div>www.tremcocpg.com</div>					



NOTE:

1. REFER TO PRODUCT DATA SHEETS FOR SPECIFIC APPLICATION METHODS.
2. WALL ASSEMBLY SHALL PROVIDE FOR A MAXIMUM DESIGN DEFLECTION OF $L/360$.
3. BACKER ROD AND SEALANT JOINT SHALL NOT COVER OR OBSTRUCT CASING BEAD WEEP HOLES.
4. DETAIL DOES NOT APPLY TO CANTILEVERED DECKS. CANTILEVERED DECKS REQUIRE JOB SPECIFIC FLASHING DETAILS.
5. PAPER BACKING BY OTHERS IS OPTIONAL WHEN DRYVIT $\frac{3}{16}$ " DRAINAGE MAT IS INSTALLED OVER AWRB.

This detail is for general informational purposes only. The project design professional determines, in its sole discretion, whether this detail or a functionally equivalent detail is best suited for the project with respect to any architecture, engineering, and design requirements, including any local building code requirements. If this document is not reviewed and the product is not approved for use by a licensed design professional, the customer agrees that the detail may contain substantive flaws requiring correction, and hereby releases Tremco CPG Inc. and USG from any and all liability related to the design and installation of the product. This detail is subject to change without notice. Contact Tremco and USG to ensure you have the most recent version.

StucCoat One Coat® Securock® ExoAir 430 System

<div> Dryvit Technical Support: 800-556-7752</div>	Detail: Termination at Wood Framed Deck				File Name: SCOC SE430 17	<div> TREMCO Construction Products Group</div>
	Drawn by: KAB	Checked by: CW	Scale: NTS	Date: 5/2/2025		
	<div> SECUROROCK EXOAIR® 430 <small>Technical Support: 800-209-9464</small></div> <div>www.tremcocpg.com</div>					