

# OUTSULITE®

**MODULITE™**  
Prefabricated Solutions

Industry-Leading Panel System with Dryvit  
Outsulation and an Air/Water-Resistive Barrier

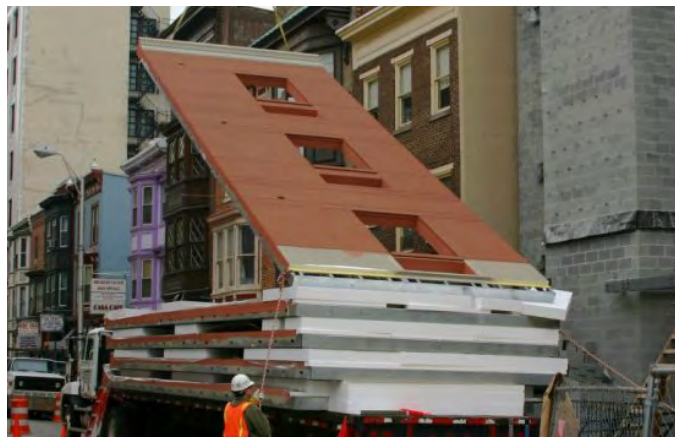
## Product Overview

The most versatile Modulite panel system, Outsulite® provides the strength and ability to configure to any panel shape, and are designed in accordance with current AISI Standards and manufacturer load tables. Deflections are limited to  $L/240$ . Stud, sheathing and building connections are engineered by panel fabricators to conform with building code design load requirements.

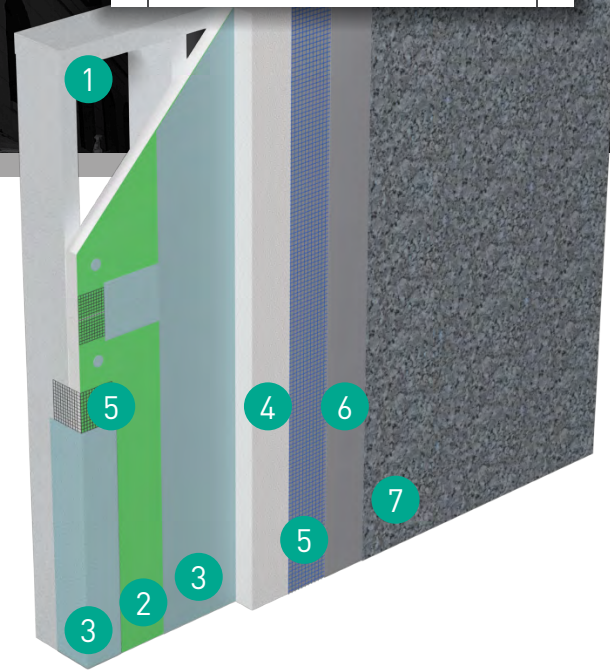
At approximately  $8 \text{ lb/ft}^2$ , Outsulite panels are a lightweight alternative to conventional systems, providing a single structural system for supporting the exterior cladding, window systems and other accessories.

## Features & Benefits

- Maximum insulation in a single structural system for supporting cladding, window systems and more
- Perfect for tight job sites
- Single structural system for supporting cladding, fenestration systems and more
- Lightweight alternative to conventional systems at just  $8 \text{ lb/ft}^2$



Outsulite panel installation



## System Components

|   |   |
|---|---|
| 1 | Light-Gauge Steel Framing   |
| 2 | Approved Sheathing  |
| 3 | Backstop® Air/Water-Resistive Barrier /<br>Dymonic® 100 Detailing Sealant |
| 4 | Expanded Polystyrene (EPS) w/ Dryvit Adhesive                             |
| 5 | Reinforcing Mesh ( <i>Embedded in Base Coat</i> )                         |
| 6 | Base Coat   |
| 7 | Finish Coat ( <i>Shown: TerraNeo®</i> )                                   |



Outsulite panel installation

# Why Build with Modulite Prefabricated Panels?

Speed construction or restoration. Simplify installation. Extend the construction season. A structure built with Modulite prefabricated panels means more for everyone – more satisfied contractors, more comfortable occupants or tenants, and more efficient structures and cost-effective operation for owners.



## Faster Construction Time

In-plant fabrication can reduce production time, and speed up field application of exterior cladding systems, to reduce construction schedules.



## Any Look You Want

A wide range of colors and finishes like brick, granite, metals, stucco and more provide maximum flexibility in your façade aesthetic.



## Stronger and More Resilient

Our systems are designed for maximum durability, many with service lives far surpassing that of competing systems.



## Avoid Labor Shortage Problems

Pre-fabricated Dryvit panels can help address ongoing shortages in the skilled labor force – while simultaneously maximizing quality control.



## Cost-Effective for the Long Term

A broad range of products can fit most project budgets – but our energy-efficiency and maintenance solutions can also help you ensure cost-effective ownership and operation for the long term.



## Better Insulated

Industry-leading Outsulation® continuous insulation means efficient construction and operation, and will exceed strict energy codes for insulation.



## One Point of Contact

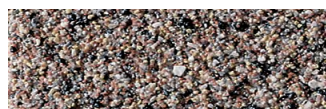
Our products and systems are backed by industry-leading warranties – all from a single point of contact. We can also help with everything from asset management to diagnostics to installer training.



## Leading Edge Sustainability

Our building solutions help you reduce waste, and meet green building standards like Net Zero, Living Building Challenge, Passive House and more.

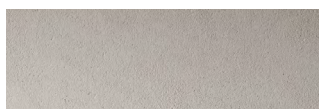
## DRYVIT® FINISH OPTIONS | Choose from unlimited color and finish combinations!



AMERISTONE™



FERROS™



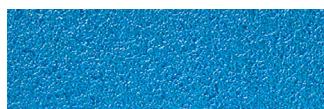
LYMESTONE™



QUARZPUTZ®



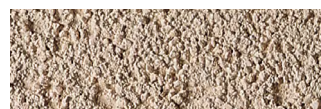
STONE MIST



REFLECTIT™ TEXTURE



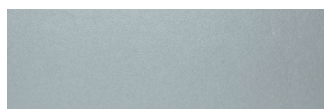
CUSTOM BRICK™



SANDPEBBLE™



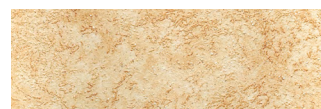
TERRANEO®



REFLECTIT™ SMOOTH



WOODGRAIN



TUSCAN GLAZE™

Tremco CPG Inc. | 3735 Green Road | Beacwood, OH 44122 | 401.822.4100 | dryvit.com

Tremco Construction Products Group (CPG) brings together Tremco CPG Inc. and its Dryvit and Nudura brands; Willseal; Prebuck LLC; Tremco Barrier Solutions, Inc.; Weatherproofing Technologies, Inc. and its Pure Air Control Services and Canam Building Envelope Specialists offerings; and Weatherproofing Technologies Canada, Inc.

 **TREMCO**  
Construction Products Group

Use of the ® symbol indicates registration with the US Patent & Trademark Office and the Canadian Intellectual Property Office.