

OUTSULATION® EXTERIOR INSULATION AND FINISH SYSTEMS

Unlock Your Building's True Potential with Exceptional
Performance and Stunning Aesthetics





THE OUTSULATION® DIFFERENCE

As the name suggests, Outsulation® exterior insulation and finish systems place insulation on the outside of the building, and are the most effective solution for meeting today's energy code requirements for continuous insulation. With Dryvit Outsulation systems, you can rest assured that your building will not only meet code requirements, but also provide superior thermal performance. Our systems are engineered to perform in all climates and on all types of structures, with the additional configurations to ensure maximum performance in any application.

Don't settle for conventional buildings with inefficient thermal performance. Choose from one of the many Dryvit Outsulation system options and enjoy lower energy costs, increased comfort and peace of mind knowing your building meets or exceeds code requirements.

Scan here for full details on Outsulation® systems online:



THE TREMCO CPG DIFFERENCE



Faster Construction Time

In-plant fabrication can reduce production time, and speed up field application of exterior cladding systems, to reduce construction schedules.



Any Look You Want

A wide range of colors and finishes like brick, granite, metals, stucco and more provide maximum flexibility in your façade aesthetic.



Stronger and More Resilient

Our systems are designed for maximum durability, many with service lives far surpassing that of competing systems.



Avoid Labor Shortage Problems

Pre-fabricated Dryvit panels can help address ongoing shortages in the skilled labor force - while simultaneously maximizing quality control.



Cost-Effective for the Long Term

A broad range of products can fit most project budgets - but our energy-efficiency and maintenance solutions can also help you ensure cost-effective ownership and operation for the long term.



Better Insulated

Industry-leading Outsulation® continuous insulation means efficient construction and operation, and will exceed strict energy codes for insulation.



One Point of Contact

Our products and systems are backed by industry-leading warranties - all from a single point of contact. We can also help with everything from asset management to diagnostics to installer training.



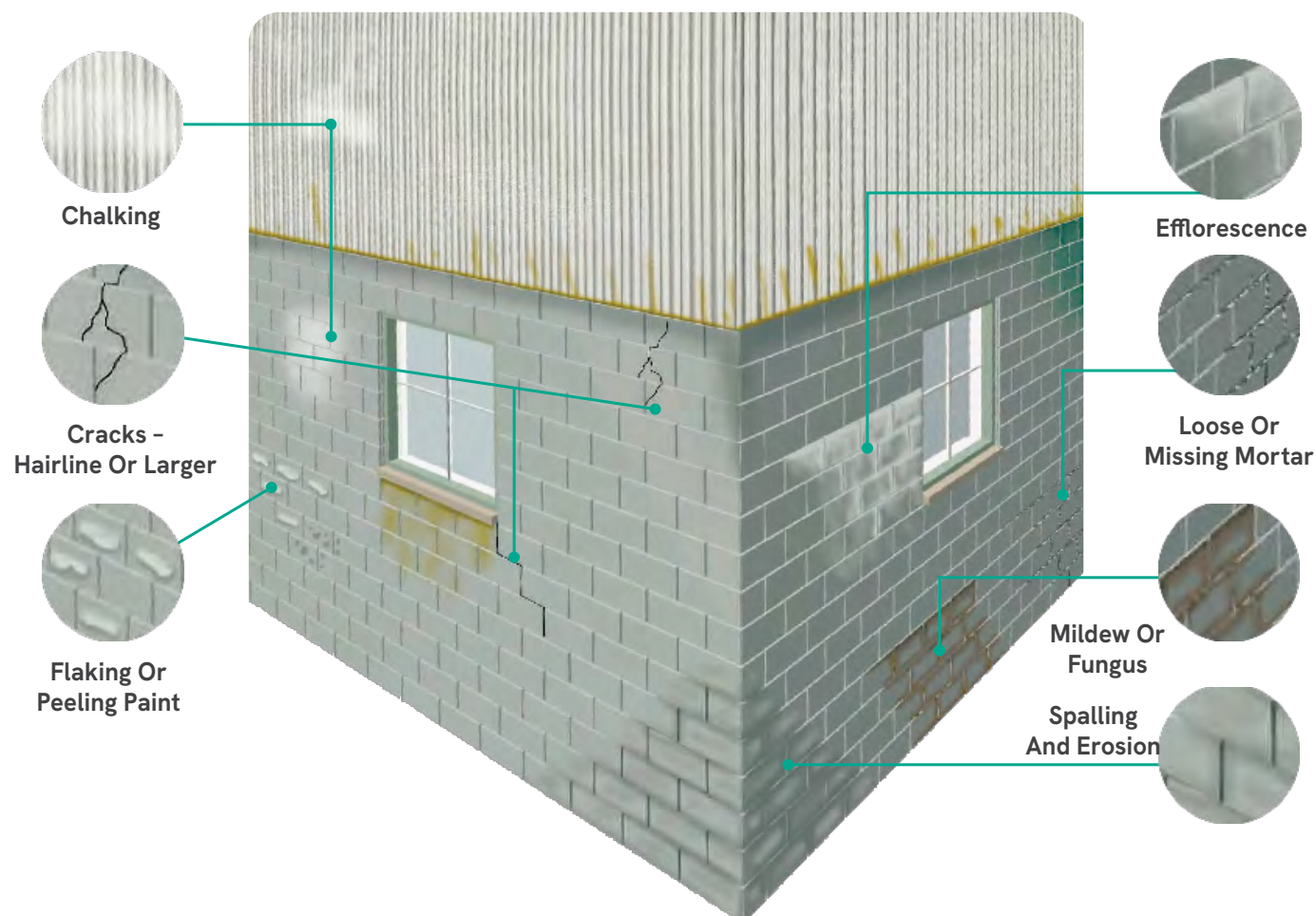
Leading Edge Sustainability

Our building solutions help you reduce waste, and meet green building standards like Net Zero, Living Building Challenge, Passive House and more.

Because of our industry-unique relationship, Dryvit and Tremco have the solutions to ensure compatible, tested systems from the foundation to the roof:

-
- A collection of Tremco building products. In the center is a large orange board labeled "USG TREMCO SECUROCK® EXO-AIR® 430 Air & Water Barrier". To its left are two white tubs of "dryvit" and "EXO-AIR 230". In front of the tubs are rolls of black and yellow tape, and three tubes of "Dymonic 100" sealant. To the right is a white panel with a blue and white sealant application diagram. The background is dark blue.

Rain, wind, snow, ultraviolet rays, and ineffective detailing will all take their toll on structures over time. Exterior deterioration eventually leads to even greater problems if not addressed. Unprotected exteriors and failing joints allow moisture intrusion and a multitude of other concerns, including but not limited to facade degradation, mold and mildew.





OUTSULATION® SYSTEMS

COMPARISON GUIDE:

Properties	CONTINUOUS INSULATION TYPE	R-VALUE PER INCH	AIR-AND WATER-RESISTIVE BARRIER	DRAINAGE	FINISH OPTIONS	NFPA 285	EXTENDED WARRANTY	TREMCO CPG COMPATIBILITY	CHOOSE THIS SYSTEM FOR
Systems:									
OUTSULATION RMD <small>(USA ONLY)</small>	Expanded Polystyrene (EPS) or Graphite Polystyrene (GPS)	EPS: 3.85 GPS: 4.7	Field-Applied Fluid or Sheet-Type † (by others)	Passive	Any Dryvit Color, Texture or Specialty Finish	●		●	Residential Construction Projects
OUTSULATION HDCI	Expanded Polystyrene (EPS) or Graphite Polystyrene (GPS)	EPS: 3.85 GPS: 4.7	Field-Applied Fluid	Passive	Any Dryvit Color, Texture or Specialty Finish	●	●	●	Maximum Impact/Puncture Resistance with an Available 20-Year Warranty
OUTSULATION HDCI SECUROCK® EXOAIR® 430	Expanded Polystyrene (EPS) or Graphite Polystyrene (GPS)	EPS: 3.85 GPS: 4.7	Factory Pre-Applied	Passive	Any Dryvit Color, Texture or Specialty Finish	●	●	●	Maximum Impact/Puncture Resistance with an Available 20-Year Warranty, with a Factory Pre-Applied Barrier
OUTSULATION LCMD 1-5 <small>(USA ONLY)</small>	Expanded Polystyrene (EPS) or Graphite Polystyrene (GPS)	EPS: 3.85 GPS: 4.7	Sheet-Type (By Others)	Passive	Any Dryvit Color, Texture or Specialty Finish	●		●	Light Commercial Construction Projects
OUTSULATION MASONRY VENEER <small>(USA ONLY)</small>	Expanded Polystyrene (EPS) or Graphite Polystyrene (GPS)	EPS: 3.85 GPS: 4.7	Field-Applied Fluid	Passive (US) EPS Channels (CAN)	Dryvit-Approved Manufactured Stone Masonry Veneer* or Thin Brick**	●		●	The Ability to Finish with Either Manufactured Stone Veneer or Thin Brick
OUTSULATION MD	Expanded Polystyrene (EPS) or Graphite Polystyrene (GPS)	EPS: 3.85 GPS: 4.7	Field-Applied Fluid	EPS Channels	Any Dryvit Color, Texture or Specialty Finish	●		●	Maximum Drainage from Engineered EPS Channels
OUTSULATION MD SECUROCK® EXOAIR® 430 <small>(USA ONLY)</small>	Expanded Polystyrene (EPS) or Graphite Polystyrene (GPS)	EPS: 3.85 GPS: 4.7	Factory Pre-Applied	EPS Channels	Any Dryvit Color, Texture or Specialty Finish	●	●	●	Maximum Drainage from Engineered EPS Channels, with a Factory Pre-Applied Barrier

* Compliant with ICC Acceptance Criteria AC51
** Compliant with ASTM C1088

OUTSULATION® SYSTEMS Continued

COMPARISON GUIDE:

Properties		CONTINUOUS INSULATION TYPE	R-VALUE PER INCH	AIR-AND WATER-RESISTIVE BARRIER	DRAINAGE	FINISH OPTIONS	NFPA 285	EXTENDED WARRANTY	TREMCO CPG COMPATIBILITY	CHOOSE THIS SYSTEM FOR
Systems:										
OUTSULATION MINERAL WOOL (USA ONLY)	Rockwool® Frontrock™ Mineral Wool	4.0	Field-Applied Fluid	Passive (US) Mineral Wool Channels (CAN)	Any Dryvit Color and Most Texture or Specialty Finishes (smooth finishes not recommended)	●		●		Non-Combustible, Fire Code-Compliant Mineral Wool Insulation
OUTSULATION PLUS (CANADA ONLY)	Expanded Polystyrene (EPS) or Graphite Polystyrene (GPS)	EPS: 3.85 GPS: 4.7	Field-Applied Fluid	Passive	Any Dryvit Color, Texture or Specialty Finish	●		●		Canadian Projects
OUTSULATION PLUS MD (USA ONLY)	Expanded Polystyrene (EPS) or Graphite Polystyrene (GPS)	EPS: 3.85 GPS: 4.7	Field-Applied Fluid	Passive	Any Dryvit Color, Texture or Specialty Finish	●		●		An Excellent All-Around EIF System
OUTSULATION PLUS MD SECUROCK® EXOAIR® 430 (USA ONLY)	Expanded Polystyrene (EPS) or Graphite Polystyrene (GPS)	EPS: 3.85 GPS: 4.7	Factory Pre-Applied	Passive	Any Dryvit Color, Texture or Specialty Finish	●	●	●		An Excellent All-Around EIF System with a Factory Pre-Applied Barrier
OUTSULATION	Expanded Polystyrene (EPS) or Graphite Polystyrene (GPS)	EPS: 3.85 GPS: 4.7	None	None	Any Dryvit Color, Texture or Specialty Finish	●		●		Retrofits, or Projects where an Air/Water-Resistive Barrier is not Specified or Desired
OUTSULATION X (USA ONLY)	DuPont™ Styrofoam™ Brand Panel Core 20 XPS Foam Insulation	5.0	Field-Applied Fluid	Passive	Any Dryvit Color, Texture or Specialty Finish	●		●		Maximum R-Values
OUTSULATION X SECUROCK® EXOAIR® 430 (USA ONLY)	DuPont™ Styrofoam™ Brand Panel Core 20 XPS Foam Insulation	5.0	Factory Pre-Applied	Passive	Any Dryvit Color, Texture or Specialty Finish	●	●	●		Maximum R-Values with a Factory Pre-Applied Barrier

† Depending on system configuration

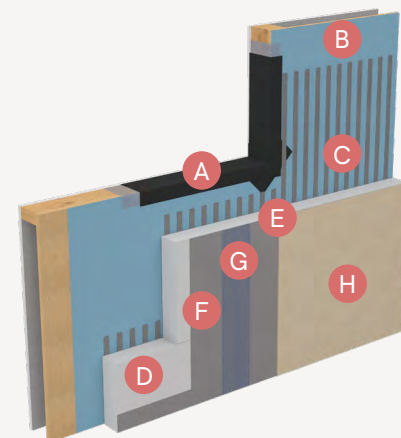
OUTSULATION® RMD

An exterior insulation and finish system designed specifically for residential construction with continuous insulation, built-in moisture drainage and an air-and water-resistive barrier.
AVAILABLE IN US ONLY.

Product Overview

The Outsulation RMD System from Dryvit has been engineered specifically for residential, wood-framed (one- and two-family) construction projects. It is designed to work with Dryvit or Tremco air- and water-resistive barriers or the sheet-type barriers common in residential construction. The system incorporates a drainage plane between the barrier and the continuous insulation, allowing incidental water to weep to the exterior.

With multiple attachment options, the Outsulation RMD system can be mechanically fastened to acceptable substrates with Dryvit-approved fasteners or adhesively applied over lath. With an industry-leading warranty and world of color, texture and specialty finish choices, Outsulation RMD is an excellent choice for residential exterior finish and insulation systems.



System Components:

- A. Dryvit/Tremco Flashing System
- B. Dryvit/Tremco Air- and Water-Resistive Barrier, or Code-Approved Air- and Water-Resistive Barrier by Others
- C. Adhesive/Drainage Medium
- D. Pre-Based Starter Board
- E. EPS Continuous Insulation Board
- F. Base Coat
- G. Reinforcing Mesh
- H. Dryvit Finish

Features & Benefits



Designed Specifically for Residential

Outsulation RMD is engineered specifically for residential, wood-framed construction projects. It has multiple attachment options and is designed to work with the sheet-type air and water-resistive barriers common in residential construction.



Incorporated Moisture Drainage

Moisture management is made easy with Outsulation RMD: The system incorporates vertical adhesive beads that pair with the air and water-resistive barrier to facilitate efficient moisture drainage and prevent the build-up of water within the wall assembly.



Enhanced Energy Efficiency

Dryvit's industry-leading Outsulation continuous insulation can improve a home's energy efficiency by helping to lower heating and cooling demands and in-turn, the building's overall operational costs.



Tremco CPG Compatibility

As part of Tremco Construction Products Group (CPG), Dryvit Outsulation systems have the added benefit of tested, proven compatibility with many Tremco, Willseal and Nudura products to help create truly comprehensive building enclosures.



Beautiful Finish Options for Your Home

For over 50 years, Dryvit's selection of colors, textures and finishes have allowed trendsetters to make bold choices for their buildings to stand out. From traditional options to the most unique alternatives, Outsulation RMD offers a world of combinations for maximum curb appeal.

OUTSULATION® HDCI / OUTSULATION HDCI SE430

The most durable continuous insulation system available, blending CI, an air/water-resistive barrier, and warranted puncture resistance.

Product Overview

Impact resistance can be a critical design consideration for any building. The Outsulation HDCI Securock system delivers design freedom, exceptional performance and a high level of impact resistance backed by a 20-year performance warranty. If the lamina gets punctured, we will repair it*. The system's top-of-the-line strength is achieved by adding a second layer of high-impact Panzer® 20 reinforcing mesh behind the standard reinforcing mesh.

Features & Benefits



High Durability Continuous Insulation

The HDCI stands for High Durability Continuous Insulation and that means it is more than just a pretty face: this system withstands punctures and impacts up to 10 times better than the industry standard.



Warranted Puncture Resistance

The exceptional durability of Outsulation HDCI also comes with added peace of mind: it is backed by a written 20-year warranty. If the lamina gets punctured, we will repair it.*



Enhanced Energy Efficiency

Dryvit's industry-leading Outsulation® continuous insulation can improve almost any structure's energy efficiency by helping to lower heating/cooling demands and in turn, the building's overall operational costs.



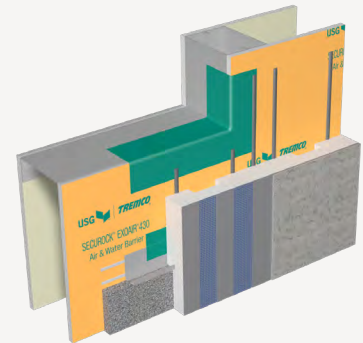
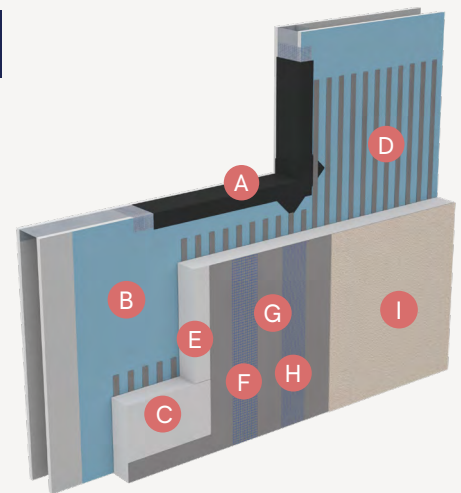
Maximum Design Freedom

For over 50 years, Dryvit's selection of colors, textures and finishes have allowed architectural trendsetters to make bold choices for their projects to stand out. From traditional options to the cutting-edge, Outsulation HDCI can be completed in many vivid, fade-resistant finishes.



Tremco CPG Compatibility

As part of Tremco Construction Products Group (CPG), Dryvit Outsulation systems have the added benefit of tested, proven compatibility with many Tremco, Willseal and Nudura products to help create truly comprehensive building enclosures.



System Components:

- A. Dryvit/Tremco Flashing System
- B. Dryvit/Tremco Air/Water-Resistive Barrier
- C. Pre-Based Starter Board
- D. Adhesive in Vertical Notched Trowel Configuration
- E. Continuous Insulation
- F. Panzer® 20 Reinforcing Mesh Embedded in Base Coat
- G. Base Coat
- H. Standard Reinforcing Mesh
- I. Dryvit Finish

*Contact Dryvit for full warranty details.

OUTSULATION® LCMD 1-5

Five exterior insulation and finish system configurations designed specifically for light commercial construction with continuous insulation and drainage planes. AVAILABLE IN US ONLY.

Product Overview

Outsulation LCMD Systems 1-5 have been engineered specifically for light commercial construction projects. All are mechanically fastened over an air/water-resistive barrier with approved fasteners.

To accommodate all the most common light commercial building styles, Outsulation LCMD also includes options for five different drainage planes installed between the barrier and continuous insulation to allow incidental water to weep to the exterior:

- **Outsulation LCMD System 1** — Dryvit Drainage Mat
- **Outsulation LCMD System 2** — Dupont® Tyvek® Stuccowrap™
- **Outsulation LCMD System 3** — Grooved Insulation Board
- **Outsulation LCMD System 4** — Metal Lath with Vertical Notched Trowel Adhesive
- **Outsulation LCMD System 5** — Plastic Lath with Vertical Notched Trowel Adhesive

With a leading warranty and world of color, texture, and specialty finish choices, the Outsulation® LCMD systems are the ideal choice for light commercial exterior finish and insulation systems.

Features & Benefits



Designed for Light Commercial

Outsulation LCMD systems 1-5 are engineered specifically for light commercial construction projects. There are multiple configurations they are all designed to accommodate the various building techniques most commonly used in light commercial construction.



Five Moisture Drainage Configurations

Moisture management is built-in with Outsulation LCMD: The system incorporates five drainage plane options that pair with the air/water-resistive barrier to facilitate efficient moisture drainage and prevent the build-up of water within walls.



Beautiful Finish Options

For over 50 years, Dryvit's selection of colors, textures and finishes have allowed trendsetters to make bold choices for their buildings to stand out. From traditional options to the most unique alternatives, Outsulation LCMD offers endless combinations for maximum curb appeal.

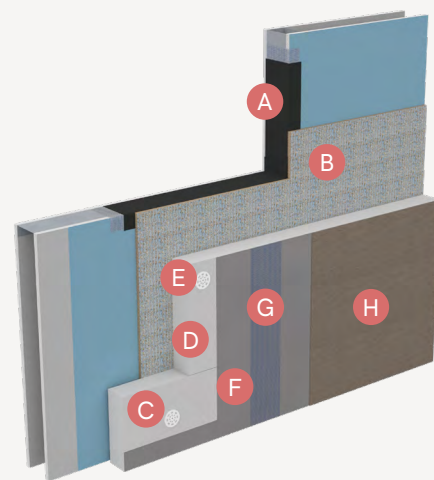
Tremco CPG Compatibility

As part of Tremco Construction Products Group (CPG), Dryvit Outsulation systems have the added benefit of tested, proven compatibility with many Tremco, Willseal and Nudura products to help create truly comprehensive building enclosures.



Enhanced Energy Efficiency

Dryvit's industry-leading continuous insulation systems can improve a home's energy efficiency by helping to lower heating/cooling demands and in turn, the building's overall operational costs.



System Components:

- A. Dryvit AquaFlash® System
- B. (One of Five Drainage Plane Options, Dependent on System - System 2 Shown)
- C. Pre-Based Starter Board
- D. Continuous Insulation Board
- E. Mechanical Fastener
- F. Base Coat
- G. Reinforcing Mesh
- H. Dryvit Finish

OUTSULATION® MASONRY VENEER / THIN BRICK

Exterior insulation and finish system with moisture drainage, air/water-resistive barrier, continuous insulation and a manufactured stone masonry veneer.

Product Overview

Outsulation Masonry Veneer is an exterior insulation and finish system that incorporates moisture drainage, an air/water-resistive barrier and Continuous Insulation (CI) and is finished with a Manufactured Stone Masonry Veneer compliant with ICC Acceptance Criteria AC51. A variety of manufactured stone masonry veneers allow for maximum freedom in architectural design, and provide a perfect complement to Dryvit's other textures, finishes and colors. This system is a single-source wall solution that protects against air, water, thermal and vapor transmission. It also provides cost savings by reducing the wall's structural demand, eliminating shelf and bearing angles, and reducing the footing and foundation.

Features & Benefits



Improved Fire-Resistance

ROCKWOOL® Frontrock™ mineral wool insulation boards are non-combustible, compliant with NFPA 285 and 268, and available in both mono- and dual-density variations providing excellent R-value of 4.0 per inch.



Enhanced Energy Efficiency

This system's ROCKWOOL® Frontrock™ mineral wool continuous insulation can improve almost any structure's energy efficiency by helping to lower heating/cooling demands and in-turn, the building's overall operational costs.



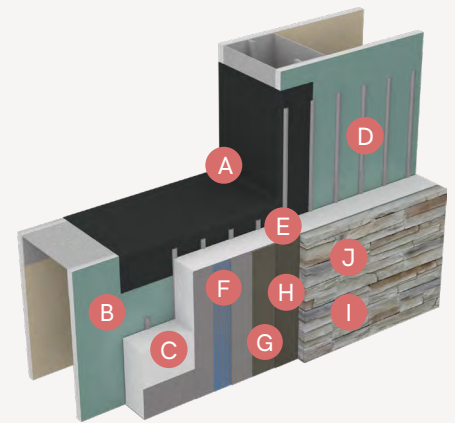
Improved Moisture Drainage

Moisture management is made easy with Outsulation Mineral Wool: The system incorporates vertical adhesive beads that pair with the air- and water-resistive barrier to facilitate efficient moisture drainage and prevent the build-up of water within the wall assembly.



Maximum Design Freedom

For over 50 years, Dryvit's selection of colors, textures and finishes have allowed architectural trendsetters to make bold choices for their projects to stand out. From traditional options to the cutting-edge, Outsulation HDCl can be completed in many vivid, fade-resistant finishes.



System Components:

- A. Dryvit AquaFlash® System
- B. Dryvit Air/Water-Resistive Barrier and Accessory Components
- C. Dryvit Drainage Components and/or Pre-Coated Starter Boards
- D. Dryvit Primus® Adhesive in Vertical Notched Trowel Configuration
- E. EPS Insulation Board
- F. Dryvit Reinforced Base Coat (Dryvit Intermediate Mesh Only)
- G. Dryvit Modified Primus Skim Coat Substrate Preparation
- H. Dryvit Modified Primus Adhesive for Manufactured Stone Masonry Veneer
- I. Dryvit-Approved Manufactured Stone Masonry Veneer
- J. Mortar for Joint Treatment

OUTSULATION® MD / OUTSULATION MD SE430

An exterior insulation and finish system that pairs a vertically grooved insulation board with an air- and water-resistive barrier for enhanced moisture drainage.

Product Overview

The Outsulation MD system combines three powerful lines of defense against water intrusion: a reinforced base coat, a specially engineered insulation board with vertical drainage grooves, and a proven, tested Dryvit air- and water-resistive barrier. It also improves moisture drainage by incorporating a perforated PVC Drainage Track with weep holes, and a Vent Assembly capable of draining water and passing air.

And as part of the Outsulation family, it includes high-performance EPS continuous insulation for enhanced energy efficiency and can be completed in a wide variety of eye-catching Dryvit colors, textures, and specialty finishes.

Features & Benefits



Engineered Moisture Drainage

The Outsulation® MD system incorporates EPS insulation boards specially engineered with vertical drainage channels. They work together with the air- and water-resistive barrier to facilitate efficient moisture drainage and prevent water build-up within the wall assembly.



Air and Water-Resistive Barrier

Outsulation® MD includes a liquid-applied, air- and water-resistive barrier for improved protection against air and water infiltration, enhancing the durability of buildings and reducing their long-term maintenance costs.



Maximum Design Freedom

For over 50 years, Dryvit's selection of colors, textures and finishes have allowed architectural trendsetters to make bold choices for their projects to stand out with vivid, fade-resistant finishes.



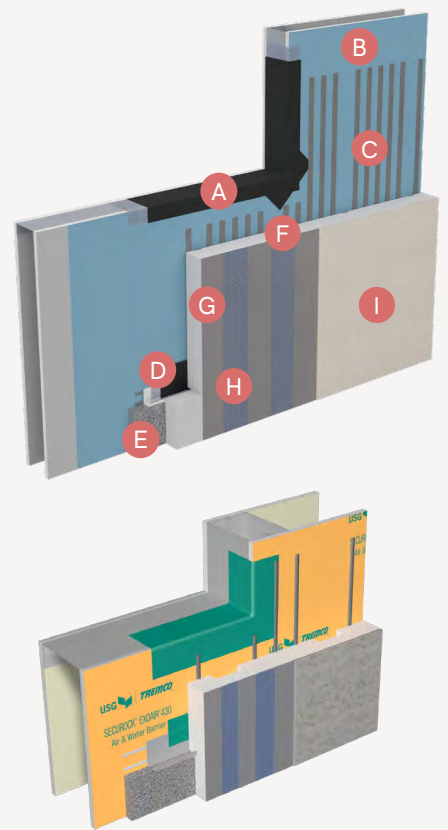
Enhanced Energy Efficiency

Outsulation® MD can improve almost any structure's energy efficiency with Dryvit's industry-leading continuous insulation (CI), by helping to lower heating/cooling demands and in-turn, the building's overall operational costs.



Tremco CPG Compatibility

As part of Tremco Construction Products Group (CPG), Dryvit Outsulation systems have the added benefit of tested, proven compatibility with many Tremco, Willseal and Nudura products to help create truly comprehensive building enclosures.



System Components:

- A. Dryvit/Tremco Flashing
- B. Air/Water-Resistive Barrier
- C. Dryvit Adhesive
- D. Drainage Track
- E. Vent Assembly
- F. EPS Insulation Board with Vertical Drainage Channels
- G. Base Coat
- H. Reinforcing Mesh
- I. Dryvit Finish

OUTSULATION® MINERAL WOOL

Exterior insulation and finish system with moisture drainage, air/water-resistive barrier, and non-combustible mineral wool continuous insulation. AVAILABLE IN US ONLY.

Product Overview

Outsulation® Mineral Wool is top-of-the-line exterior insulation and finish system (EIFS) that incorporates moisture drainage, an air/water-resistive barrier, a non-combustible ROCKWOOL® mineral wool continuous insulation boards with an excellent R-Value of 4.0 per inch. Outsulation Mineral Wool system offers an engineered and high-performance system that is built for maximum R-Value and non-combustibility.

The ROCKWOOL® Frontrock™ board is available in both mono and dual-density and meets ASTM E136 (and CAN/ULC S114) as a non-combustible mineral wool insulation board. Additionally, it is compliant with NFPA 285 and 268 fire testing and is New York Department of Building Code Compliant.

Features & Benefits



Improved Fire-Resistance

ROCKWOOL® Frontrock™ mineral wool insulation boards are non-combustible, compliant with NFPA 285 and 268, and available in both mono- and dual-density variations providing excellent R-value of 4.0 per inch.



Enhanced Energy Efficiency

This system's ROCKWOOL® Frontrock™ mineral wool continuous insulation can improve almost any structure's energy efficiency by helping to lower heating/cooling demands and in-turn, the building's overall operational costs.



Improved Moisture Drainage

Moisture management is made easy with Outsulation Mineral Wool: The system incorporates vertical adhesive beads that pair with the air- and water-resistive barrier to facilitate efficient moisture drainage and prevent the build-up of water within the wall assembly.



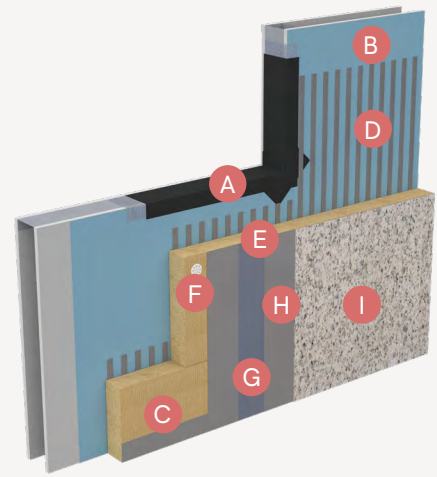
Maximum Design Freedom

For over 50 years, Dryvit's selection of colors, textures and finishes have allowed architectural trendsetters to make bold choices for their projects to stand out. From traditional options to the cutting-edge, Outsulation HDCl can be completed in many vivid, fade-resistant finishes.



Tremco CPG Compatibility

As part of Tremco Construction Products Group (CPG), Dryvit Outsulation systems have the added benefit of tested, proven compatibility with many Tremco, Willseal and Nudura products to help create truly comprehensive building enclosures.



System Components:

- A. Dryvit/Tremco Flashing
- B. Dryvit/Tremco Air/Water-Resistive Barrier
- C. Starter Board with Drainage
- D. Dryvit Genesis® Adhesive in Vertical Notched Trowel Configuration
- E. ROCKWOOL® Frontrock™ Mineral Wool Insulation Board
- F. Mechanical Fastener
- G. Standard Plus Reinforcing Mesh
- H. Dryvit Genesis Base Coat
- I. Dryvit Finish

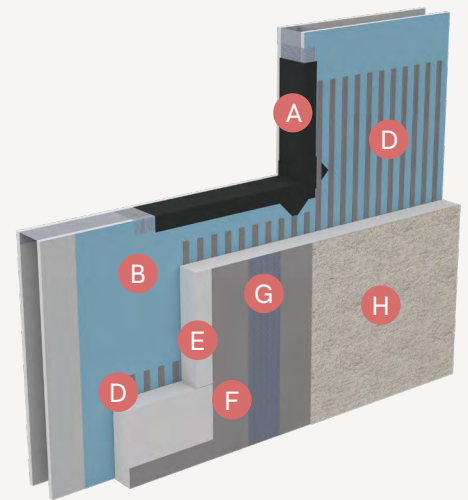
OUTSULATION® PLUS

An exterior insulation and finish system that provides energy efficiency, aesthetic appeal, and durability for the long-term.
AVAILABLE IN CANADA ONLY.

Product Overview

The Outsulation® Plus system (available in Canada only) takes the original Outsulation system's mesh-reinforced base coat, high-performance exterior insulation, waterproof flashing, and moisture drainage channels and includes a Dryvit/Tremco air- and water-resistive barrier.

Also backed by a leading warranty and world of color, texture, and specialty finish choices, Outsulation Plus is an excellent choice for your next project.



System Components:

- A. Dryvit/Tremco Flashing
- B. Air/Water-Resistive Barrier
- D. Dryvit Adhesive in Vertical Notched Trowel Configuration for Drainage
- E. EPS Insulation Board
- F. Base Coat
- G. Reinforcing Mesh
- H. Dryvit Finish

Features & Benefits



Air and Water-Resistive Barrier

Outsulation Plus adds a liquid-applied, air- and water-resistive barrier for improved protection against air and water infiltration, enhancing the durability of buildings and reducing their long-term maintenance costs.



Improved Moisture Drainage

Moisture management is improved with Outsulation Plus: The system incorporates vertical adhesive beads paired with the air- and water-resistive barrier for efficient moisture drainage and channel water out of the wall assembly.



Maximum Design Freedom

For over 50 years, Dryvit's selection of colors, textures and finishes have allowed architectural trendsetters to make bold choices for their projects to stand out with vivid, fade-resistant finishes.



Enhanced Energy Efficiency

Dryvit's industry-leading Outsulation® continuous insulation can improve almost any structure's energy efficiency by helping to lower heating/cooling demands and in-turn, the building's overall operational costs.



Tremco CPG Compatibility

As part of Tremco Construction Products Group (CPG), Dryvit Outsulation systems have the added benefit of tested, proven compatibility with many Tremco, Willseal and Nudura products to help create truly comprehensive building enclosures.

OUTSULATION® PLUS MD / OUTSULATION® PLUS MD SE430

A state-of-the-art exterior insulation and finish system (EIFS) that marries energy efficiency, aesthetic appeal and long-lasting durability. AVAILABLE IN US ONLY.

Product Overview

Step into the future of construction with Dryvit Outsulation® Plus MD, the premier exterior insulation and finish system.

This system provides a mesh-reinforced base coat, drainage track, high-performance exterior insulation, waterproof flashing, moisture drainage system, and a superior air/water-resistive barrier for maximum moisture drainage. With an industry-leading warranty and world of color, texture, and specialty finish choices, Outsulation Plus MD is the perfect choice for your next project.

Features & Benefits



Air and Water-Resistive Barrier

Outsulation Plus MD includes a liquid-applied, air- and water-resistive barrier for improved protection against air and water infiltration, enhancing the durability of buildings and reducing their long-term maintenance costs.



Improved Moisture Drainage

Moisture management is made easy with Outsulation Plus MD: The system incorporates vertical adhesive beads that pair with the air- and water-resistive barrier to facilitate efficient moisture drainage and prevent the build-up of water within the wall assembly.



Maximum Design Freedom

For over 50 years, Dryvit's selection of colors, textures and finishes have allowed architectural trendsetters to make bold choices for their projects to stand out with vivid, fade-resistant finishes.



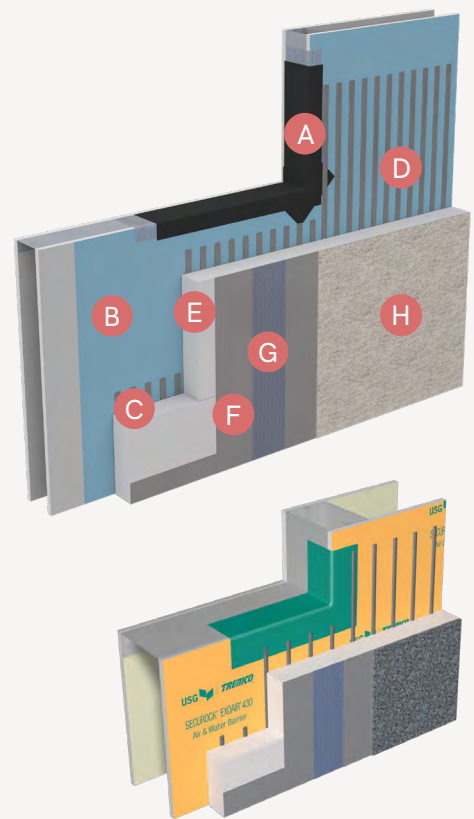
Enhanced Energy Efficiency

Dryvit's industry-leading Outsulation continuous insulation can improve almost any structure's energy efficiency by helping to lower heating/cooling demands and in turn, the building's overall operational costs.



Tremco CPG Compatibility

As part of Tremco Construction Products Group (CPG), Dryvit Outsulation systems have the added benefit of tested, proven compatibility with many Tremco, Willseal and Nudura products to help create truly comprehensive building enclosures.



System Components:

- A. Dryvit/Tremco Flashing
- B. Air/Water-Resistive Barrier
- C. Pre-Based Starter Board
- D. Dryvit Adhesive in Vertical Notched Trowel Configuration
- E. EPS Insulation Board
- F. Base Coat
- G. Reinforcing Mesh
- H. Dryvit Finish

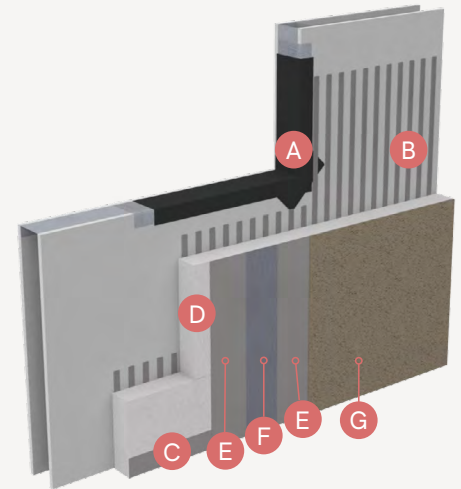
OUTSULATION®

The continuous insulation (CI) system that started it all — still used throughout the world where an air and water-resistive barrier is not specified or desired.

Product Overview

Outsulation® is the original Continuous Insulation (CI) system introduced to North America by Dryvit in 1969. It is still used throughout the world, primarily adhered directly over masonry and other approved substrates where an air and water-resistive barrier is not specified or desired. It is also a popular choice in many other retrofit applications.

Designed as a barrier system, Outsulation can improve your structure's energy efficiency, weatherability and durability and can be finished in a wide array of colors, textures and specialty finishes to meet any aesthetic demands.



System Components:

- A. Dryvit AquaFlash® System
- B. Adhesive
- C. Pre-Coated Starter Board
- D. EPS Insulation Board
- E. Base Coat
- F. Reinforcing Mesh
- G. Dryvit Finish

Features & Benefits



Direct-Applied Barrier System

The original Outsulation® system is designed to be applied directly over masonry and other approved substrates, providing an immediate boost to any building's energy performance and curb appeal.



High-Performance CI

Give your building's energy efficiency a boost with Outsulation® continuous insulation. The system incorporates high-performance EPS insulation boards to improve energy efficiency and reduce operating costs.



Cost-Effective Retrofitting

Retrofitting your building with Outsulation® system is an economical choice, refreshing its' look and performance at less cost and headache vs. overcladding with actual brick, quarried stone, or metal panels.



Maximum Design Freedom

For over 50 years, Dryvit's selection of colors, textures and finishes have allowed architectural trendsetters to make bold choices for their projects to stand out with vivid, fade-resistant finishes.



Tremco CPG Compatibility

As part of Tremco Construction Products Group (CPG), Dryvit Outsulation systems have the added benefit of tested, proven compatibility with many Tremco, Willseal and Nudura products to help create truly comprehensive building enclosures.

OUTSULATION® X / OUTSULATION® X SE430

A highly energy-efficient, exterior insulation and finish system that with DuPont® XPS insulation, moisture drainage and an air/water-resistive barrier.
AVAILABLE IN US ONLY.

Overview

Dryvit Outsulation® X™ featuring DuPont® Styrofoam™ brand panel core 20 Extruded Polystyrene (XPS) foam insulation is a highly energy-efficient, durable, design-flexible, and cost-effective exterior cladding system for all types of construction and renovation projects. It meets current and proposed ASHRAE design standards and IGCC/IECC code requirements for exterior CI use.

The system's XPS is highly durable and provides an R-value of 5.0 per inch for maximum insulation and energy efficiency for any building, helping to lower heating/cooling demands and operational costs. Outsulation X is a single source solution for the air and weather barrier, CI, drainage, and aesthetic finish of the exterior wall – combining them into an engineered, fully-tested and fully code-compliant system that is backed by an industry-leading warranty.

Features & Benefits



Maximum R-Values

This system's DuPont® Panel Core 20 XPS Foam Insulation with an R-value of 5.0 per inch provides excellent energy efficiency and helps lower heating/cooling demands, and in turn, the building's overall operational costs.



Enhanced Durability

Outsulation X's extruded polystyrene (XPS) foam insulation is highly durable, providing enhanced impact resistance vs. standard expanded polystyrene (EPS), per ASTM E2486 and when used with Standard Plus™ reinforcing mesh.



Air and Water-Resistive Barrier

Outsulation X includes a liquid-applied, air- and water-resistive barrier for improved protection against air and water infiltration, enhancing the durability of buildings and reducing their long-term maintenance costs.



Includes Moisture Drainage

Moisture management is built-in with Outsulation X: The system incorporates vertical adhesive beads that pair with the air- and water-resistive barrier to facilitate efficient moisture drainage and prevent the build-up of water within the wall assembly.



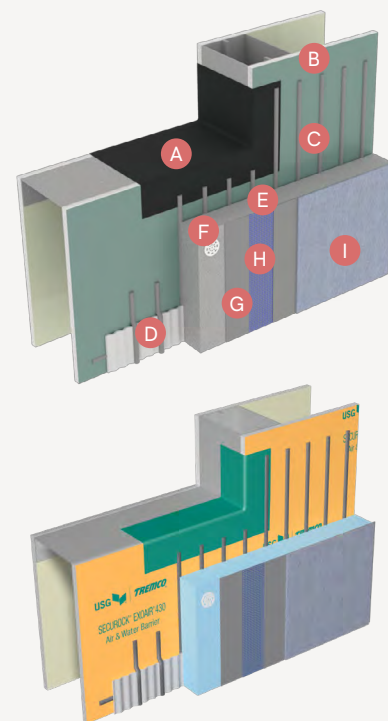
Tremco CPG Compatibility

As part of Tremco Construction Products Group (CPG), Dryvit Outsulation systems have the added benefit of tested, proven compatibility with many Tremco, Willseal and Nudura products to help create truly comprehensive building enclosures.



Maximum Design Freedom

For over 50 years, Dryvit's selection of colors, textures and finishes have allowed architectural trendsetters to make bold choices for their projects to stand out with vivid, fade-resistant finishes.



System Components:

- A. Dryvit/Tremco Flashing
- B. Air/Water-Resistive Barrier
- C. Adhesive/Drainage Medium
- D. Drainage Strip
- E. Dupont® Styrofoam™ Brand Panel Core 20 XPS Foam Insulation Board
- F. Mechanical Fasteners
- G. Base Coat
- H. Reinforcing Mesh
- I. Dryvit Finish

FINISHING YOUR OUTSULATION® SYSTEM

1

DETERMINE YOUR FINISH TECHNOLOGY DEMANDS

Whether you choose our standard dirt pickup resistant (DPR) finish technology, or Dryvit's more advanced technologies like our lightweight, mildew resistant (PMR) or hydrophobic finishes (HDP); you can be sure that the colors you select will be vibrant and long-lasting.



Dirt Pickup Resistant (DPR)

Dryvit Dirt Pickup Resistant (DPR) technology is available in many architectural finishes that provide the final color and texture for Dryvit systems. DPR chemistry means that surfaces will remain clean long after application.



Proven Mildew Resistant (PMR™)

Dryvit Proven Mildew Resistant (PMR™) finishes and coatings are specially-formulated with integral mildewcide to inhibit the growth of mold and mildew. They are available in eight standard textures, and over 250 standard colors.



Hydrophobic (HDP™)

HDP™ Water-Repellent options are 100% acrylic architectural coatings and finishes that are available in over 250 standard colors and many textures. They have excellent water-repellent properties, helping finishes remain cleaner, longer.



Bold, Fade-Resistant Color

Dryvit colors and textures with StratoTone® high-performance colorants provide bright, bold, fade-resistant exterior coatings and finishes that are backed by a 10-year UV fade-resistance warranty. Find StratoTone technology in over 250 standard colors.



Lightweight E Finishes

The line of E finishes from Dryvit are incredibly lightweight — packaged in pails weighing nearly half the weight of standard finishes. This means easier handling and application on site, but with the same high performance of other Dryvit finishes.



Highly-Flexible Elastomeric

Elastomeric finishes and coatings provide excellent elongation and flexibility, even at low temperatures. These elastomeric properties also help the finishes and coatings bridge hairline cracks for improved aesthetics and added durability.

FINISHING YOUR OUTSULATION® SYSTEM

2

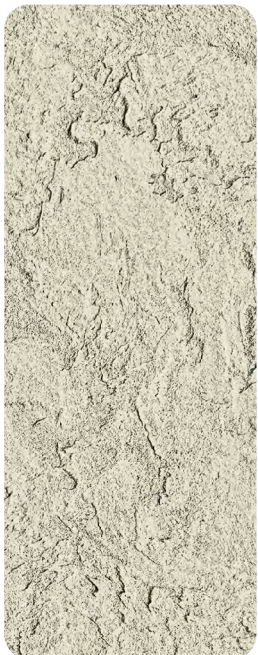
PICK AN EYE-CATCHING DRYVIT TEXTURE

Whether you're looking to create a contemporary, historical or completely unique look for your project, we have the solutions to help you achieve your goal. Dryvit's range of textures are available in an incredible array of standard and custom colours to your building stand out.

Sandblast®



Freestyle®



Quarzputz®



Sandpebble™



Finishing Touch

Whether you choose our standard dirt pickup resistant finish or Dryvit's more advanced technologies like our lightweight, mildew resistant and hydrophobic finishes, you can be sure that the textures you select will be vibrant and long-lasting.

Sandpebble
Fine™



Mojave™



Limestone™



Finesse™



FINISHING YOUR OUTSULATION® SYSTEM

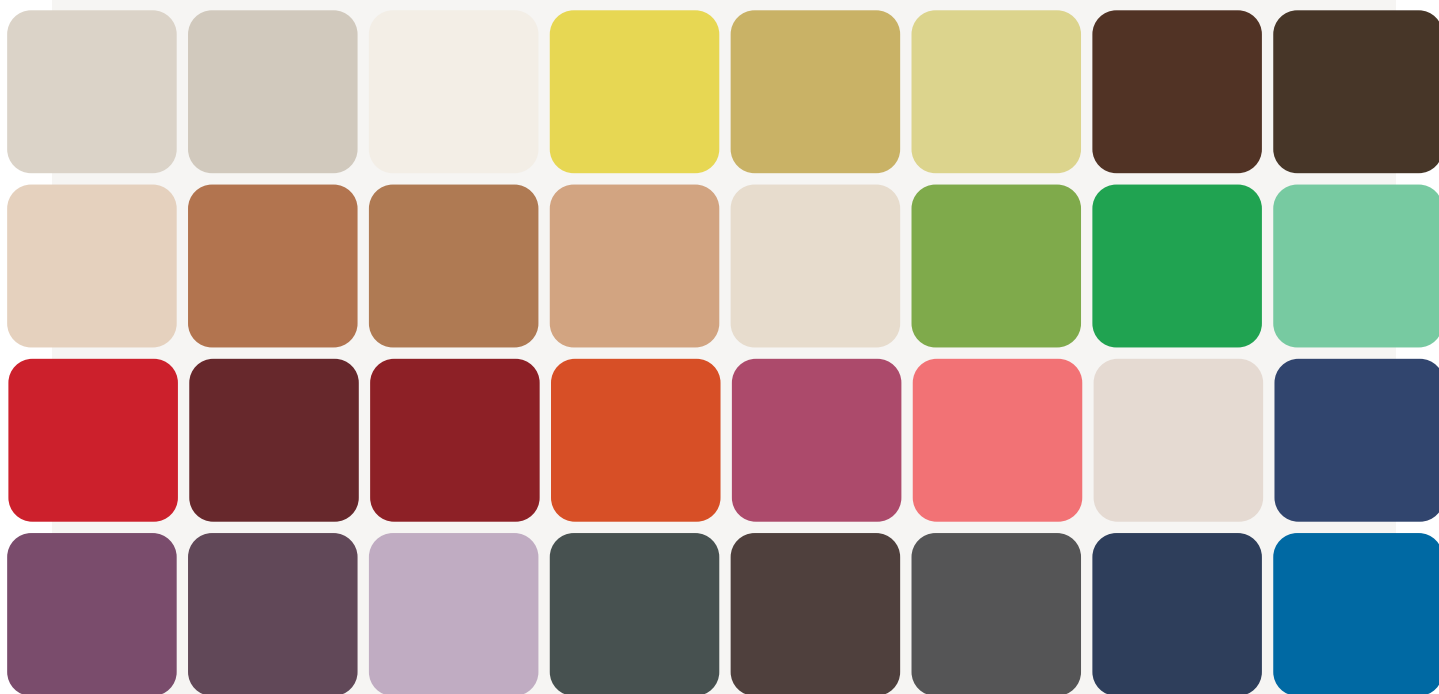
3

BRING TEXTURES TO LIFE WITH STRATOTONE™ COLORANTS

Bright, bold, fade-resistant textured finishes and coatings are easily achieved with StratoTone colorants from Dryvit. As is commonly known across many industries, designing with expressive color has been limited by the low UV-resistance of many commercial pigment systems. StratoTone raises the bar of color science to a whole new level of stability and color brightness, and does so with virtually no VOC or APEO content.

Features & Benefits of StratoTone:

- High-Performance Colorants Resist Fading Longer
- Environmentally Friendly: No VOCs or APEO
- Ideal for Bright, Bold Colors
- Lasting Colors can be Applied with Confidence
- Available in a Wide Variety of Colors
- 250+ Standard Dryvit Colors Backed by 10-Year Warranty
- Custom Colors Backed by a 5-Year Warranty



FINISHING YOUR OUTSULATION® SYSTEM

4

...OR GIVE IT A STRIKING DRYVIT SPECIALTY FINISH

Your building's exterior finish is critical to its overall look and curb appeal. Compared to color, shape, and surrounding environment, a building's finish is perhaps the most underrated yet impactful component of any structure.

Our collection of specialty finishes delivers beauty, strength, and durability to buildings everywhere. From the old-world look of plaster to smooth metallics, Dryvit® finishes have all the options you need to realize your design vision.

Since finishes are key to completing the aesthetic of your building, take comfort knowing that an entire range of Dryvit finishes is available for you. And if you don't see a color you love, we can work with you to create a custom color just for your project.

All Dryvit specialty finishes are 100% acrylic-based and contain DPR (Dirt Pick-up Resistant) technology, keeping your buildings clean and beautiful longer.



TERRANEO®

Embedded quartz and mica flecks produce a striking granite-like finish.



AMERISTONE™

Rugged, natural beauty that exudes strength.



TIBUR STONE™

A speckled finish with a smooth, clean and timeless look.



STONE MIST®

Smooth stones infused with color.



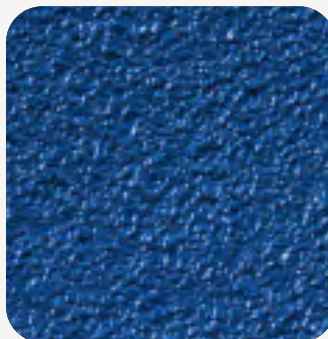
TUSCAN GLAZE™

The appearance of plaster with charming old-world style.



FERROS™

An oxidized, rustic metal finish.



REFLECTIT™

Shimmering metallic glow with a brilliant, bright finish.



WOOD/BRICK

Use special Dryvit finish techniques to replicate classic looks.

