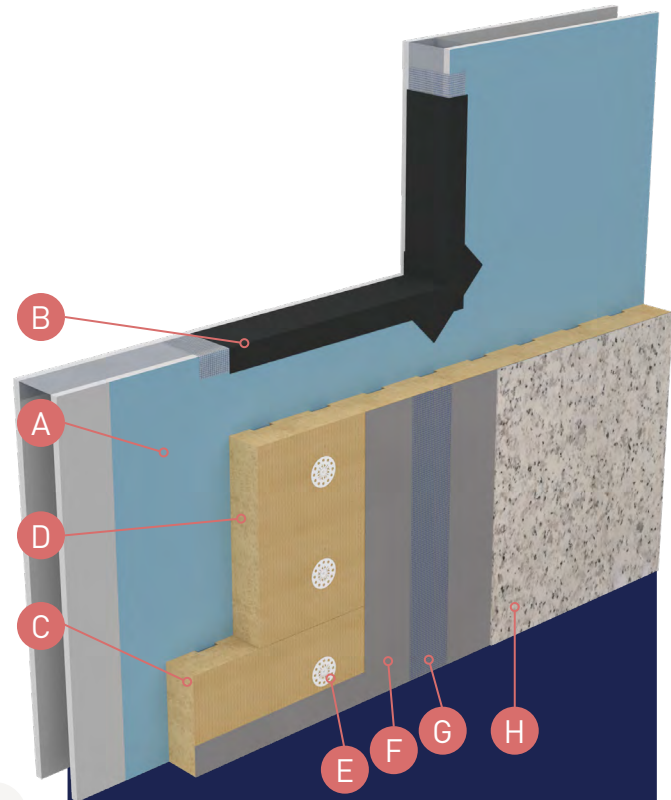


OUTSULATION® MINERAL WOOL

Product Overview

An Exterior Insulation and Finish System (EIFS) that incorporates moisture drainage, an air/water-resistive barrier, and non-combustible ROCKWOOL Frontrrock mineral wool Continuous Insulation with an R-Value of 4.0 per inch. The mineral wool boards are available with a geometrically-defined drainage cavity (GDDC) for enhanced drainage — while still providing enhanced fire protection.

Outsulation® Mineral Wool System offers an engineered and high-performance system that is built for maximum R-Value and non-combustibility.



Features & Benefits



ROCKWOOL® Frontrrock™ Mineral Wool

The ROCKWOOL Frontrrock mineral wool board is available with geometrically-defined drainage cavities (GDDC) for enhanced moisture drainage, while providing the enhanced R-values of mineral wool.



National Building Code & Fire Compliant

The Outsulation® Mineral Wool system is non-combustible and National Building Code compliant, as evidenced by the Intertek Code Compliance Research Report (CCRR)



High Design Freedom

For over 50 years, Dryvit's selection of colours, textures and finishes have allowed architectural trendsetters to make bold choices for their projects to stand out with vivid, fade-resistant finishes.



Maximum R-Value of 4.0

Dryvit's industry-leading Outsulation® continuous insulation can improve almost any structure's energy efficiency by helping to lower heating/cooling demands and in-turn, the building's overall operational costs.



Tremco CPG Compatibility

As part of Tremco Construction Products Group (CPG), Dryvit Outsulation systems have the added benefit of tested, proven compatibility with many Tremco, Willseal and Nudura products to help create truly comprehensive building enclosures.

System Components:

- A. Dryvit/Tremco Air/Water-Resistive Barrier and Accessory Components
- B. Dryvit/Tremco Flashing System
- C. Field-Prepared Starter Board with Drainage
- D. Pre-Grooved ROCKWOOL® Frontrrock™ Mineral Wool Insulation Board
- E. EJOT Mechanical Fastener - Surface Flush or Countersunk
- F. Standard Plus Reinforcing Mesh
- G. Dryvit Primus® DM Base Coat
- H. Dryvit Textured Finish (*Stone Mist®* Shown)



STRATOTONE™ HIGH-PERFORMANCE COLOURANTS

Fade Resistance Backed by a 10-year Warranty

Bright, bold, fade-resistant textured finishes and coatings are easily achieved with StratoTone colourants from Dryvit. As is commonly known across many industries, designing with expressive color has been limited by the low UV-resistance of many commercial pigment systems. StratoTone raises the bar of color science to a whole new level of stability and color brightness, and does so with virtually no VOC or APEO content.



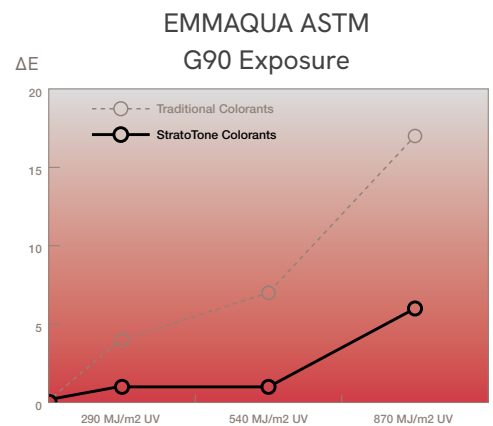
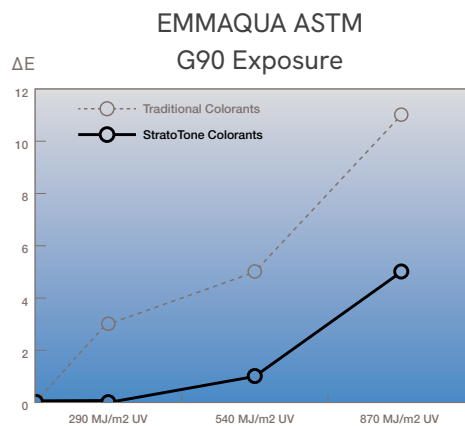
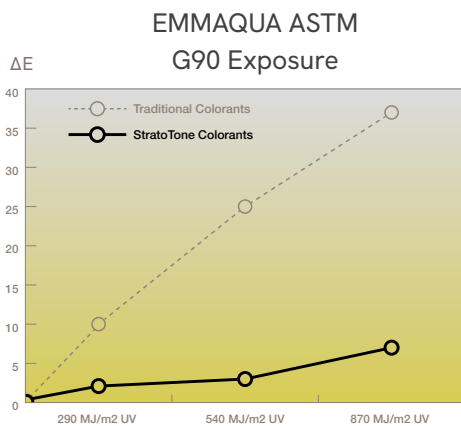
FEATURES & BENEFITS

- ✓ High-Performance Colourants Resist Fading Longer
- ✓ Environmentally Friendly: No VOCs or APEO
- ✓ Ideal for Bright, Bold Colour
- ✓ Lasting Colour can be Specified with Confidence
- ✓ Available in a Wide Variety of Colour
- ✓ Standard Dryvit Colour Backed by 10-Year Warranty
- ✓ Custom Colour Backed by a 5-Year Warranty



STRATOTONE™ vs. TRADITIONAL COLOURANTS

Colour in the red, blue and yellow range tend to be most prone to fading over time, as shown in these graphs. Note the dramatic difference between these colour when comparing “traditional” and StratoTone colourants:



ASTM G90 is the Standard Practice for Performing Accelerated Outdoor Weathering of Nonmetallic Materials Using Concentrated Natural Sunlight. Full test details available upon request.