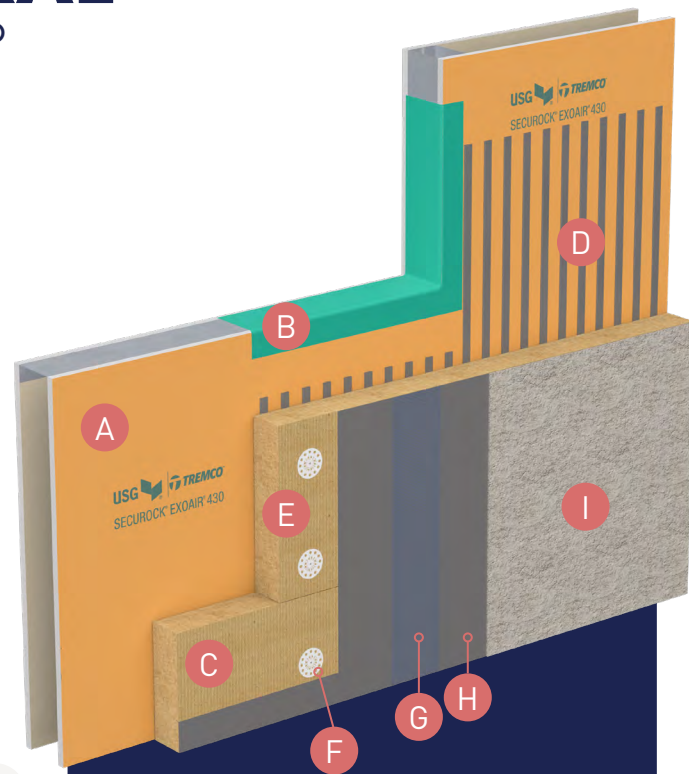


OUTSULATION® MINERAL WOOL WITH SECUROCK® EXOAIR® 430

Product Overview

An Exterior Insulation and Finish System (EIFS) that incorporates moisture drainage, an air/water-resistive barrier, and non-combustible ROCKWOOL Frontrock mineral wool Continuous Insulation with an R-Value of 4.0 per inch. The mineral wool boards are available in both mono- and dual-density to accommodate multiple system configuration demands — while still providing enhanced fire protection.

Outsulation® Mineral Wool System offers an engineered and high-performance system that is built for maximum R-Value and non-combustibility. It also includes the factory pre-applied Securock ExoAir 430 air- and water-resistive barrier for faster, more perfect installations in the field.



Features & Benefits



ROCKWOOL® Frontrock™ Mineral Wool

The ROCKWOOL Frontrock mineral wool board is available in both mono- and dual density for an engineered and high-performance finish system with maximum R-value.



Non-Combustible, Fire Compliant

The Outsulation® Mineral Wool system is compliant with ASTM E136, CAN/ULC S114 non-combustible mineral wool insulation board, and is NFPA 285 and NFPA 268 fire testing compliant.



Faster, Better Installations

The factory pre-applied Securock ExoAir 430 air- and water-resistive barrier system eliminates a time-consuming step from the field, and ensures the perfect application in advance.



Maximum R-Value of 4.0

Dryvit's industry-leading Outsulation® continuous insulation systems can improve almost any structure's energy efficiency by helping to lower heating/cooling demands and the building's overall operational costs.



Tremco CPG Compatibility

As part of Tremco Construction Products Group (CPG), Dryvit Outsulation systems have the added benefit of tested, proven compatibility with many Tremco, Willseal and Nudura products to help create truly comprehensive building enclosures.

System Components:

- A. Tremco® Securock® ExoAir® 430 Pre-Applied Air- and Water-Resistive Barrier
- B. Dryvit/Tremco Flashing System
- C. Field-Prepared Starter Board with Drainage
- D. Dryvit Genesis® Adhesive in Vertical Notched-Trowel Configuration
- E. ROCKWOOL® Frontrock™ Mineral Wool Insulation Board
- F. Mechanical Fastener - Surface Flush or Countersunk
- G. Standard Plus Reinforcing Mesh
- H. Dryvit Genesis Base Coat
- I. Dryvit Textured Finish (Stone Mist® Shown)



STRATOTONE™ HIGH-PERFORMANCE COLORANTS

Fade Resistance Backed by a 10-Year Warranty

Bright, bold, fade-resistant textured finishes and coatings are easily achieved with StratoTone colorants from Dryvit. As is commonly known across many industries, designing with expressive color has been limited by the low UV-resistance of many commercial pigment systems. StratoTone raises the bar of color science to a whole new level of stability and color brightness, and does so with virtually no VOC or APEO content.



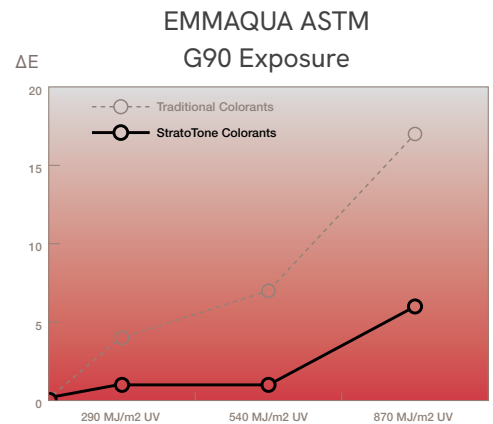
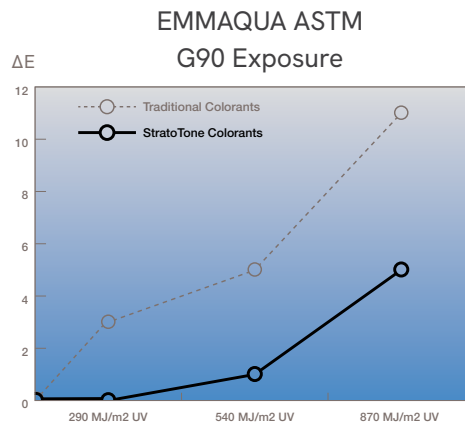
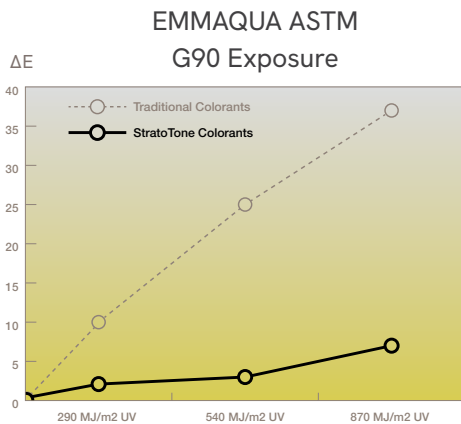
FEATURES & BENEFITS

- ✓ High-Performance Colorants Resist Fading Longer
- ✓ Environmentally Friendly: No VOCs or APEO
- ✓ Ideal for Bright, Bold Colors
- ✓ Lasting Colors can be Specified with Confidence
- ✓ Available in a Wide Variety of Colors
- ✓ Standard Dryvit Colors Backed by 10-Year Warranty
- ✓ Custom Colours Backed by a 5-Year Warranty



STRATOTONE™ vs. TRADITIONAL COLORANTS

Colors in the red, blue and yellow range tend to be most prone to fading over time, as shown in these graphs. Note the dramatic difference between these colors when comparing “traditional” and StratoTone colorants:



ASTM G90 is the Standard Practice for Performing Accelerated Outdoor Weathering of Nonmetallic Materials Using Concentrated Natural Sunlight. Full test details available upon request.