

Direct-Applied Cement Board MD Finish System™

An Exterior Finish System Applied Over Exterior Cement Board
with a Water-Resistive Barrier and Moisture Drainage



DS190

Direct-Applied Cement Board MD Finish System Installation Details

Table of Contents

Detail

DA-CBMD SYSTEM LAYOUT	DA-CBMD 1
TERMINATION AT FOUNDATION	DA-CBMD 2
EXPANSION JOINT AT FLOOR LINE	DA-CBMD 3
OPENING PREPARATION FOR STOREFRONT WINDOW	DA-CBMD 4
STOREFRONT WINDOW SILL / JAMB	DA-CBMD 5
STOREFRONT WINDOW HEAD	DA-CBMD 6
FLANGED WINDOW SILL / JAMB	DA-CBMD 7
FLANGED WINDOW HEAD	DA-CBMD 8
RAILING ATTACHMENT	DA-CBMD 9
VENT PENETRATION	DA-CBMD 10
TERMINATION AT SLOPED ROOF	DA-CBMD 11
PARAPET / WALL INTERSECTION	DA-CBMD 12
PARAPET TERMINATION	DA-CBMD 13
TERMINATION AT DECK	DA-CBMD 14
SOFFIT / FASCIA TERMINATION	DA-CBMD 15
VERTICAL CONTROL / EXPANSION JOINT	DA-CBMD 16
OUTSIDE CORNER	DA-CBMD 17
EPS SHAPE ATTACHMENT	DA-CBMD 18

NOTE:



DRYVIT MAKES NO REPRESENTATION REGARDING CONFORMITY OF ITS SUGGESTIONS TO MODEL BUILDING CODES, ENGINEERING CRITERIA, SPECIFIC APPLICATIONS, OR PROJECT LOCATIONS. ALL COMPONENTS INDICATED IN ILLUSTRATIONS, AS WELL AS OTHERS THAT MAY BE REQUIRED FOR THE INTEGRITY OF THE SYSTEM SHALL BE DESIGNED, DETAILED, AND ENGINEERED BY REPRESENTATIVES OF THE ARCHITECT, OWNER, OR CONTRACTOR TO BE IN CONFORMANCE WITH MODEL CODES, ARCHITECTURAL, AND ENGINEERING REQUIREMENTS PERTAINING TO SPECIFIC BUILDING PROJECTS.

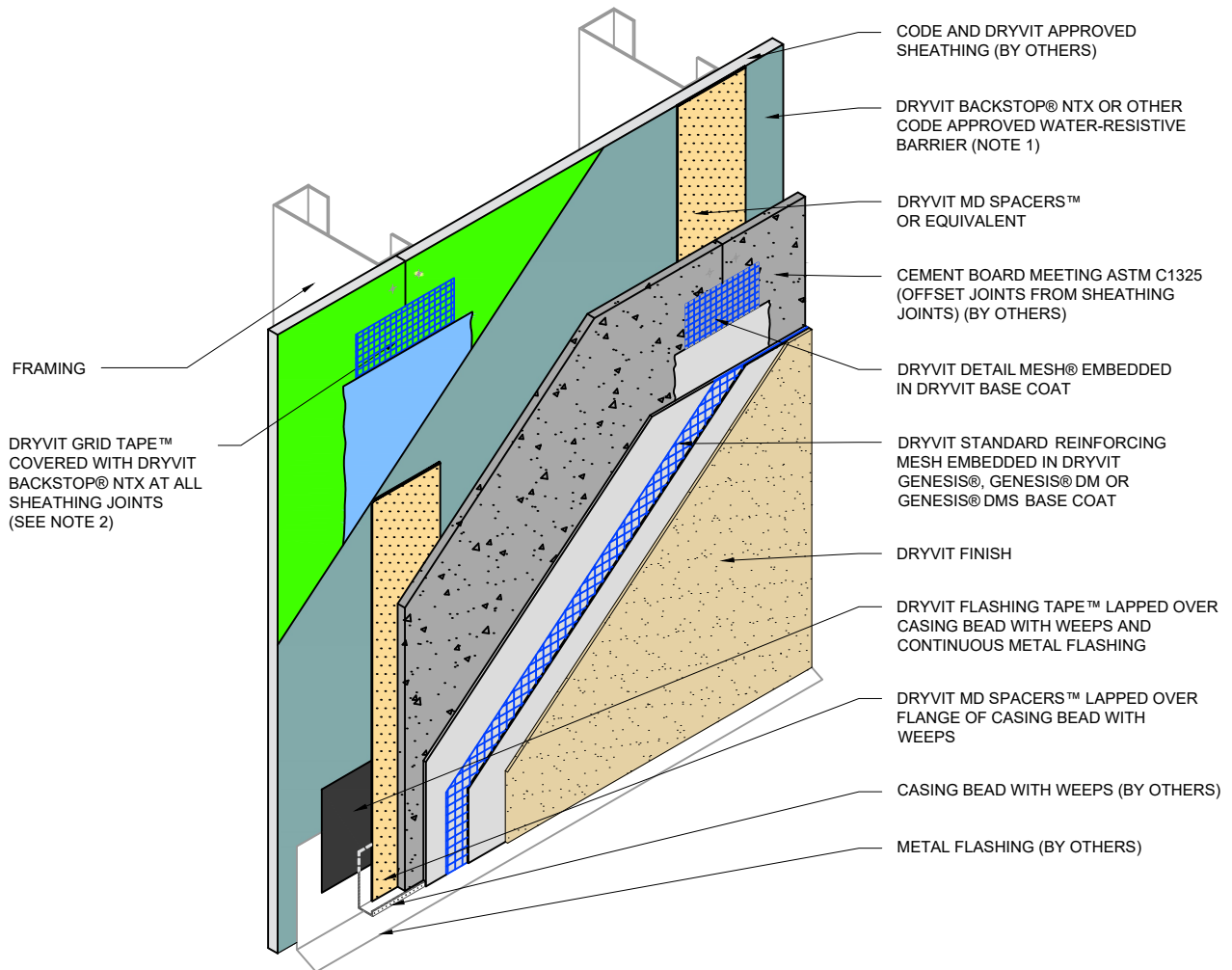
DRYVIT MAKES NO WARRANTY, EXPRESSED OR IMPLIED, AS TO THE ARCHITECTURAL DESIGN, ENGINEERING, OR WORKMANSHIP OF PROJECTS UTILIZING DRYVIT SYSTEMS OR PRODUCTS.

THE LIABILITIES OF DRYVIT SHALL BE AS STATED IN THE DRYVIT STANDARD WARRANTY. CONTACT DRYVIT FOR A FULL AND COMPLETE COPY OF THE WARRANTY.

The architecture, engineering, and design of the project using the Dryvit products are the responsibility of the project's design professional. All products and systems must comply with local building codes and standards. This detail is for general information and guidance only and Dryvit specifically disclaims any liability for the use of this detail. The project design professional determines, in its sole discretion, whether this detail or a functionally equivalent detail is best suited for the project. This detail is subject to change without notice. Contact Dryvit to ensure you have the most recent version.



Direct-Applied Cement Board MD Finish System™

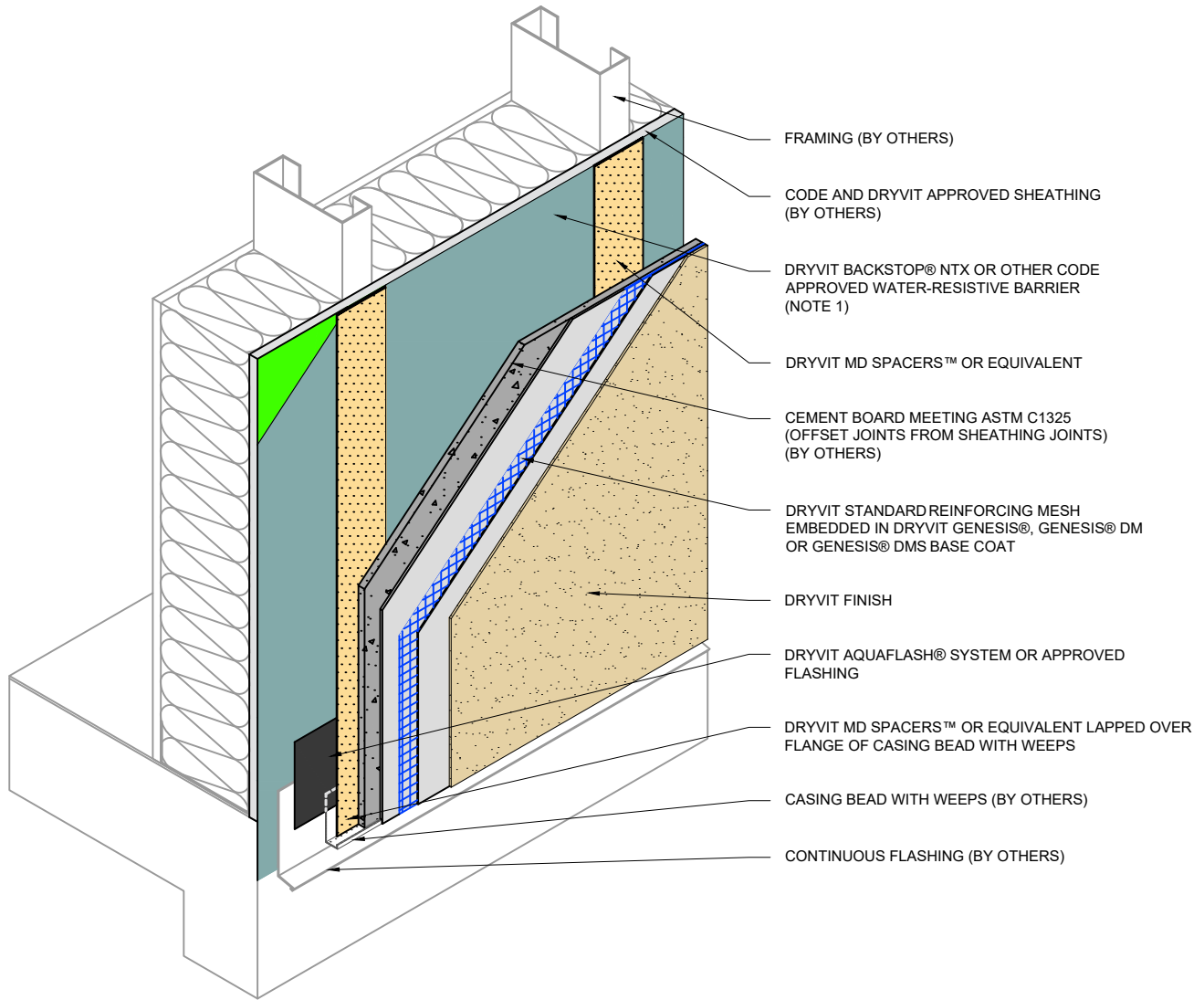
 Dryvit Technical Support: 800-556-7752	Detail: Table of Contents			File Name:	 Construction Products Group
	Drawn by: KAB	Checked by: CW	Scale: NTS	DA-CBMD TOC	
	Revision #: 00	Revised by: -	Date: 08/2023		
<small>www.tremcocpg.com</small>					



- NOTE:
1. SHEET TYPE WATER-RESISTIVE MEMBRANES SHALL BE INSTALLED IN A WEATHER BOARD FASHION.
 2. DRYVIT GRID TAPE NOT REQUIRED WHEN SHEET TYPE WATER- RESISTIVE BARRIERS ARE SPECIFIED
 3. DRYVIT AQUAFLASH® SYSTEM OR APPROVED FLASHING MAY BE USED WHEN DRYVIT BACKSTOP® NTX IS USED AS THE WATER-RESISTIVE BARRIER

Direct-Applied Cement Board MD Finish System™

 Dryvit Technical Support: 800-556-7752	Detail: Vent Penetration			File Name:	
	Drawn by: KAB	Checked by: CW	Scale: NTS	DA-CBMD 01	
	Revision #: 00	Revised by: -	Date: 08/2023		
<small>www.tremcocpg.com</small>			 Construction Products Group		



FRAMING (BY OTHERS)

CODE AND DRYVIT APPROVED SHEATHING (BY OTHERS)

DRYVIT BACKSTOP® NTX OR OTHER CODE APPROVED WATER-RESISTIVE BARRIER (NOTE 1)

DRYVIT MD SPACERS™ OR EQUIVALENT

CEMENT BOARD MEETING ASTM C1325 (OFFSET JOINTS FROM SHEATHING JOINTS) (BY OTHERS)

DRYVIT STANDARD REINFORCING MESH EMBEDDED IN DRYVIT GENESIS®, GENESIS® DM OR GENESIS® DMS BASE COAT

DRYVIT FINISH

DRYVIT AQUAFLASH® SYSTEM OR APPROVED FLASHING

DRYVIT MD SPACERS™ OR EQUIVALENT LAPPED OVER FLANGE OF CASING BEAD WITH WEEPS



CASING BEAD WITH WEEPS (BY OTHERS)

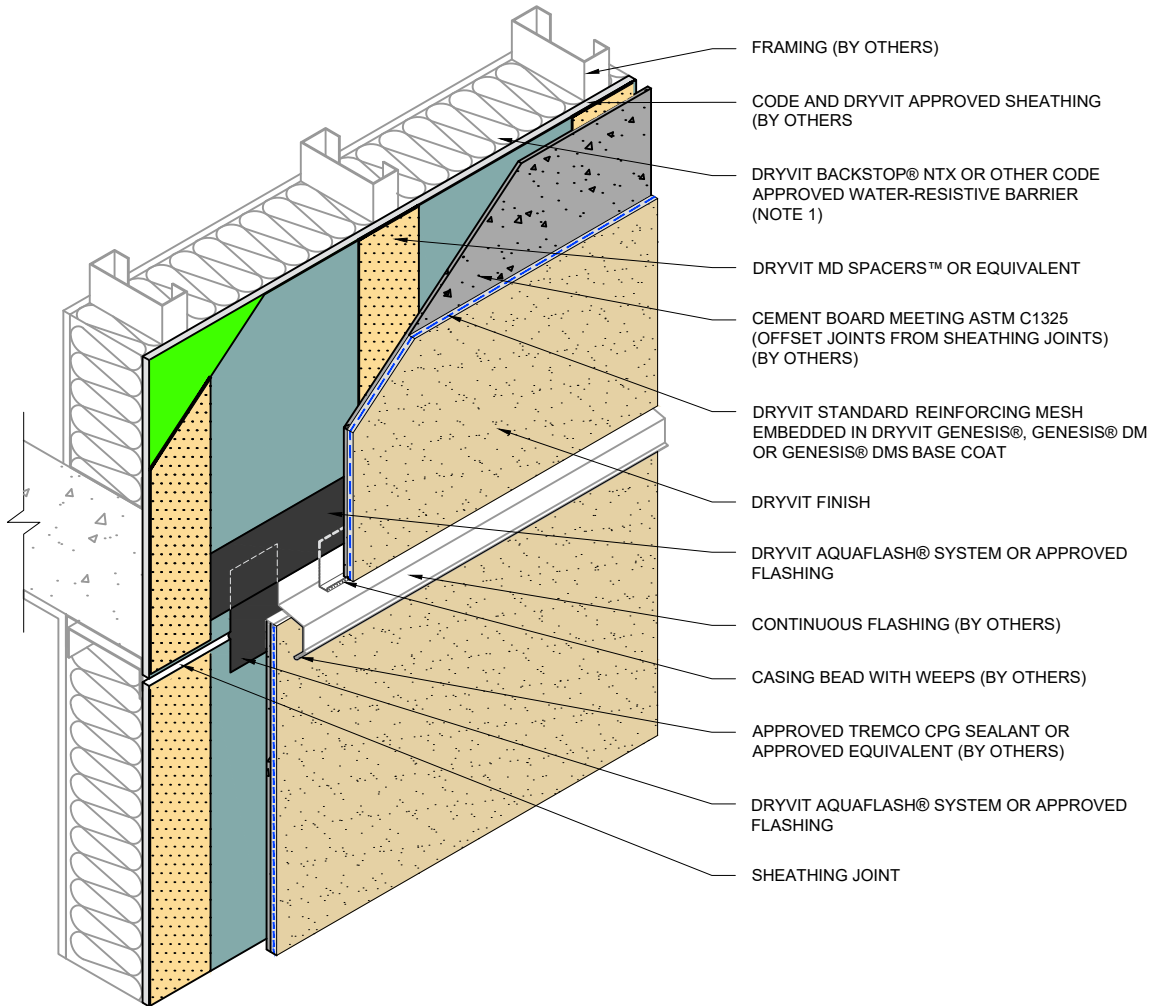
CONTINUOUS FLASHING (BY OTHERS)

NOTE:

1. SHEET TYPE WATER-RESISTIVE MEMBRANES SHALL BE INSTALLED IN A WEATHER BOARD FASHION.
2. DRYVIT AQUAFLASH® SYSTEM OR APPROVED FLASHING MAY BE USED WHEN DRYVIT BACKSTOP® NTX IS USED AS THE WATER-RESISTIVE BARRIER



Direct-Applied Cement Board MD Finish System™

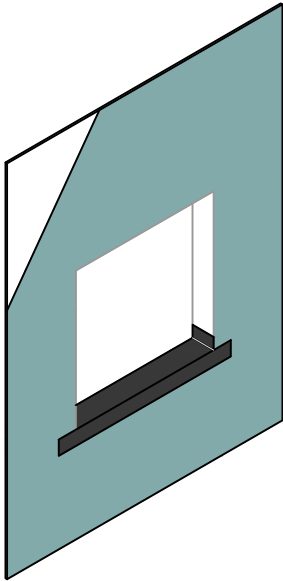
 Dryvit Technical Support: 800-556-7752	Detail: Termination at Foundation			File Name:	 Construction Products Group
	Drawn by: KAB	Checked by: CW	Scale: NTS	DA-CBMD 02	
	Revision #: 00	Revised by: -	Date: 08/2023		
<small>www.tremcocpg.com</small>					



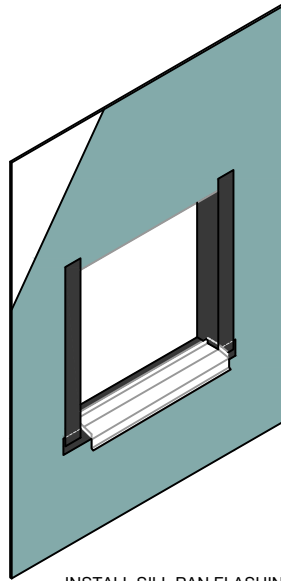
- NOTE:
1. SHEET TYPE WATER-RESISTIVE MEMBRANES SHALL BE INSTALLED IN A WEATHER BOARD FASHION.
 2. DRYVIT AQUAFLASH® SYSTEM OR APPROVED FLASHING MAY BE USED WHEN DRYVIT BACKSTOP® NTX IS USED AS THE WATER-RESISTIVE BARRIER

Direct-Applied Cement Board MD Finish System™

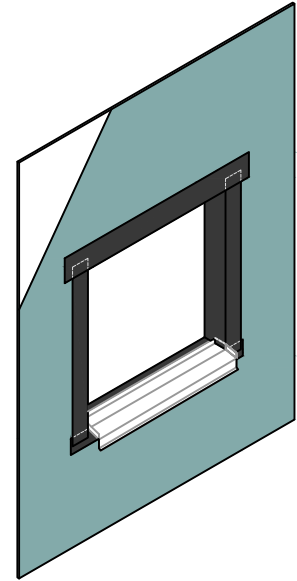
 Dryvit Technical Support: 800-556-7752	Detail: Expansion Joint at Floor Line			File Name:	 TREMCO Construction Products Group
	Drawn by: KAB	Checked by: CW	Scale: NTS	DA-CBMD 03	
	Revision #: 00	Revised by: -	Date: 08/2023		
<small>www.tremcocpg.com</small>					



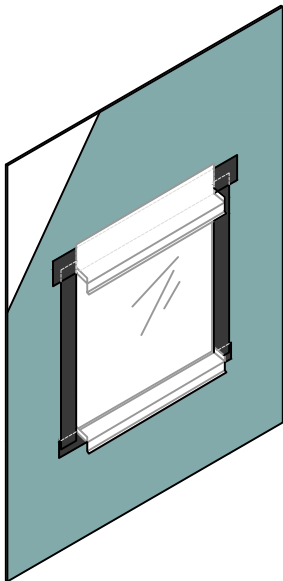
STEP 1: APPLY DRYVIT BACKSTOP® NTX TO THE FACE OF THE WALL AND APPLY DRYVIT AQUAFLASH® SYSTEM AT SILL AND LAP ONTO JAMB.



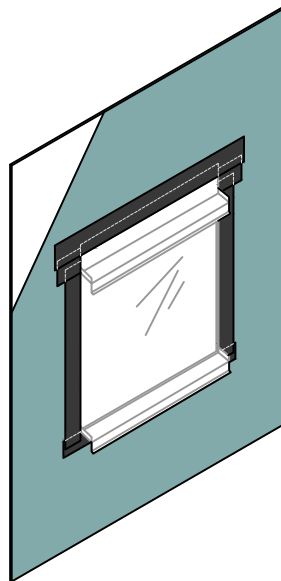
STEP 2: INSTALL SILL PAN FLASHING (BY OTHERS). APPLY DRYVIT AQUAFLASH® SYSTEM AT JAMBS AND LAP ONTO UPTURNED EDGE OF PAN FLASHING.



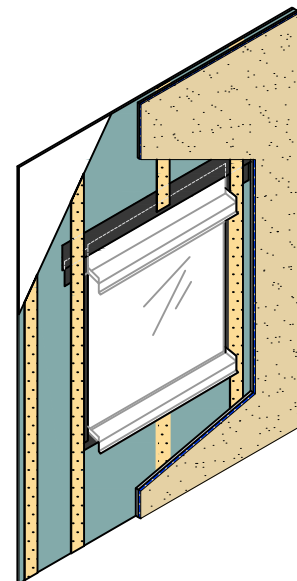
STEP 3: INSTALL DRYVIT AQUAFLASH® AT HEAD, LAPPING OVER JAMB FLASHING.



STEP 4: INSTALL WINDOW UNIT AND HEAD FLASHING (BY OTHERS)





STEP 5: APPLY DRYVIT AQUAFLASH® AT HEAD OVER METAL FLASHING AT WINDOW HEAD (BY OTHERS)

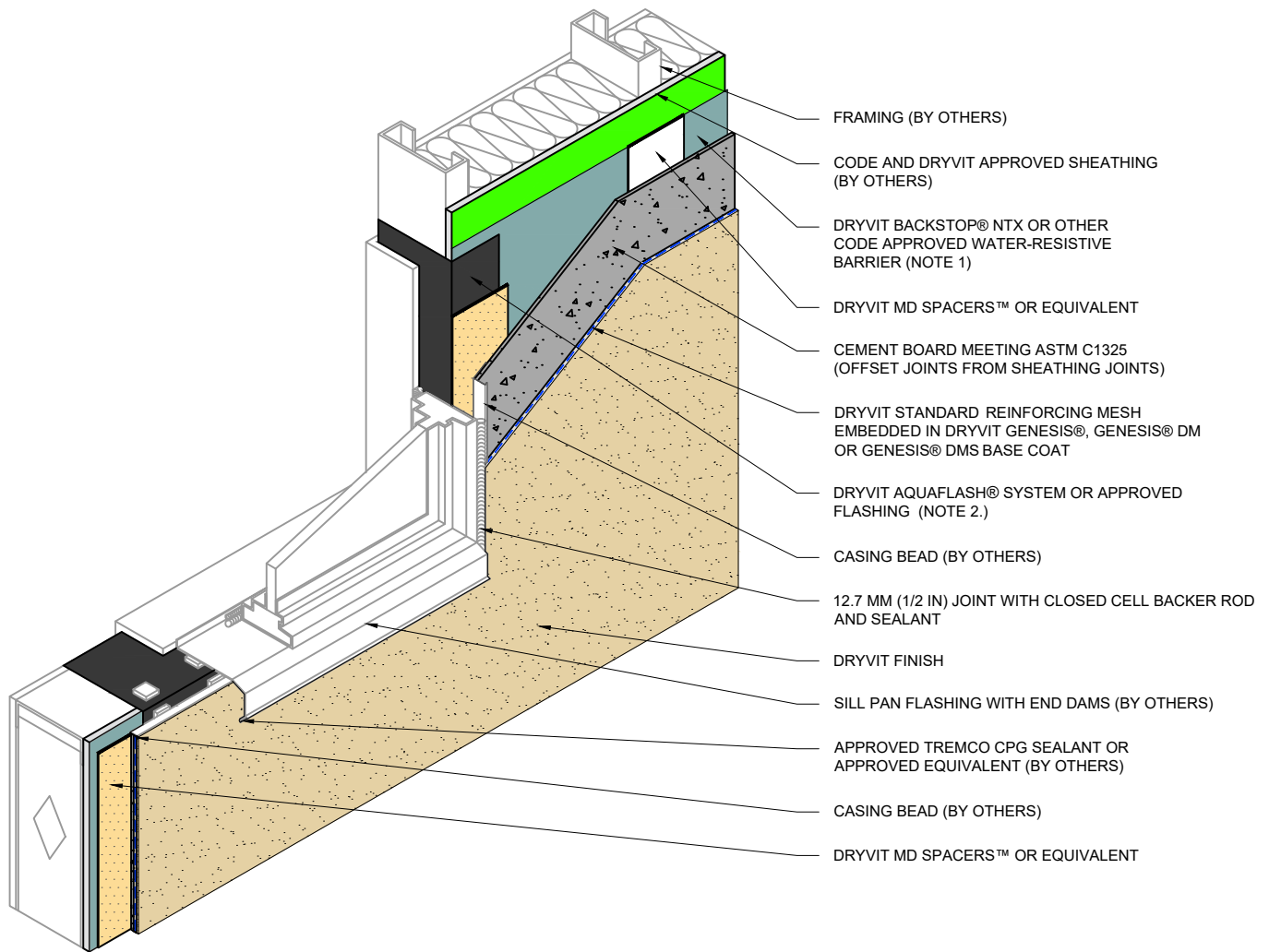


STEP 6: INSTALL DRYVIT MD SPACERS™ OR EQUIVALENT, CEMENT BOARD AND COATINGS (BY OTHERS)

- NOTE:
1. DRYVIT AQUAFLASH® SYSTEM OR APPROVED FLASHING SHALL EXTEND TO INSIDE FACE OF FRAMING.
 2. SHEET TYPE WATER-RESISTIVE MEMBRANES SHALL BE INSTALLED IN A WEATHER BOARD FASHION.
 3. DRYVIT AQUAFLASH® SYSTEM OR APPROVED FLASHING MAY BE USED WHEN DRYVIT BACKSTOP® NTX IS USED AS THE WATER-RESISTIVE BARRIER.

Direct-Applied Cement Board MD Finish System™



 Dryvit Technical Support: 800-556-7752	Detail: Opening Preparation for Storefront Window			File Name:	 Construction Products Group
	Drawn by: KAB	Checked by: CW	Scale: NTS	DA-CBMD 04	
	Revision #: 00	Revised by: -	Date: 08/2023		
<small>www.tremcocpg.com</small>					

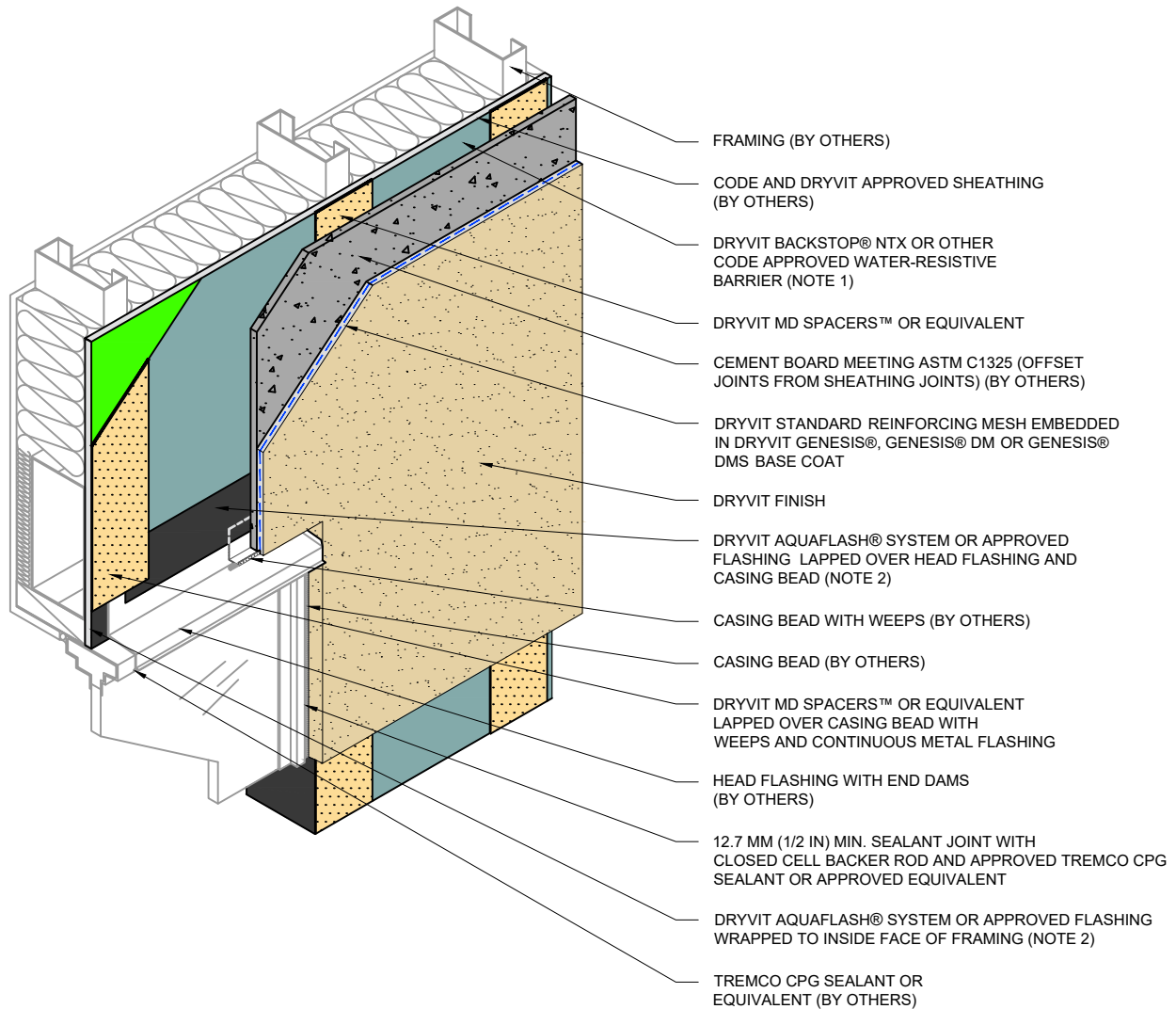


- FRAMING (BY OTHERS)
- CODE AND DRYVIT APPROVED SHEATHING (BY OTHERS)
- DRYVIT BACKSTOP® NTX OR OTHER CODE APPROVED WATER-RESISTIVE BARRIER (NOTE 1)
- DRYVIT MD SPACERS™ OR EQUIVALENT
- CEMENT BOARD MEETING ASTM C1325 (OFFSET JOINTS FROM SHEATHING JOINTS)
- DRYVIT STANDARD REINFORCING MESH EMBEDDED IN DRYVIT GENESIS®, GENESIS® DM OR GENESIS® DMS BASE COAT
- DRYVIT AQUAFLASH® SYSTEM OR APPROVED FLASHING (NOTE 2.)
- CASING BEAD (BY OTHERS)
- 12.7 MM (1/2 IN) JOINT WITH CLOSED CELL BACKER ROD AND SEALANT
- DRYVIT FINISH
- SILL PAN FLASHING WITH END DAMS (BY OTHERS)
- APPROVED TREMCO CPG SEALANT OR APPROVED EQUIVALENT (BY OTHERS)
- CASING BEAD (BY OTHERS)
- DRYVIT MD SPACERS™ OR EQUIVALENT

NOTE:
 1. SHEET TYPE WATER-RESISTIVE MEMBRANES SHALL BE INSTALLED IN A WEATHER BOARD FASHION.
 2. DRYVIT AQUAFLASH® SYSTEM OR APPROVED FLASHING MAY BE USED WHEN DRYVIT BACKSTOP® NTX IS USED AS THE WATER-RESISTIVE BARRIER

Direct-Applied Cement Board MD Finish System™



 Dryvit Technical Support: 800-556-7752	Detail: Storefront Window Sill / Jamb			File Name:	
	Drawn by: KAB	Checked by: CW	Scale: NTS	DA-CBMD 05	
	Revision #: 00	Revised by: -	Date: 08/2023		
www.tremcocpg.com			 Construction Products Group		

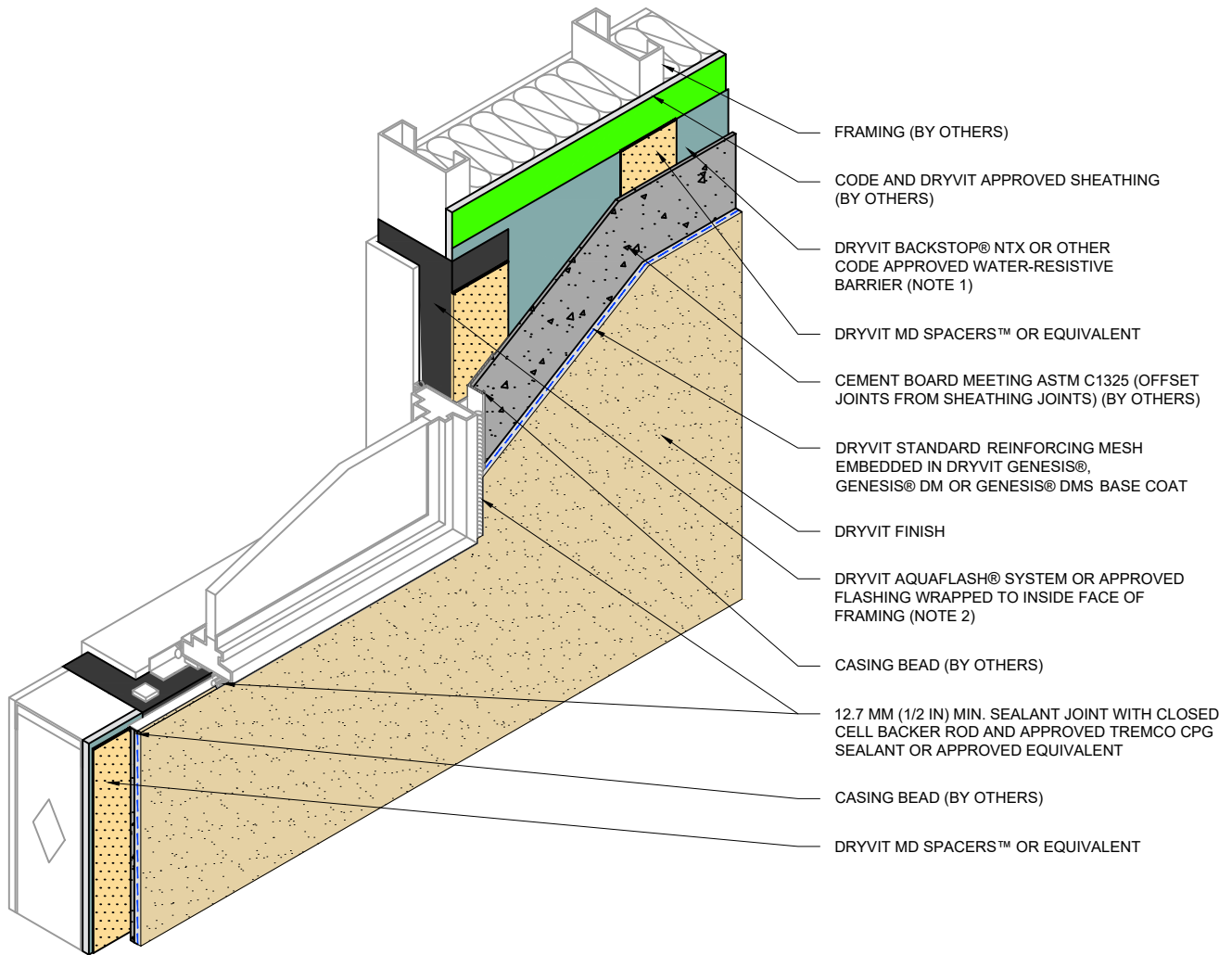


- FRAMING (BY OTHERS)
- CODE AND DRYVIT APPROVED SHEATHING (BY OTHERS)
- DRYVIT BACKSTOP® NTX OR OTHER CODE APPROVED WATER-RESISTIVE BARRIER (NOTE 1)
- DRYVIT MD SPACERS™ OR EQUIVALENT
- CEMENT BOARD MEETING ASTM C1325 (OFFSET JOINTS FROM SHEATHING JOINTS) (BY OTHERS)
- DRYVIT STANDARD REINFORCING MESH EMBEDDED IN DRYVIT GENESIS®, GENESIS® DM OR GENESIS® DMS BASE COAT
- DRYVIT FINISH
- DRYVIT AQUAFLASH® SYSTEM OR APPROVED FLASHING LAPPED OVER HEAD FLASHING AND CASING BEAD (NOTE 2)
- CASING BEAD WITH WEEPS (BY OTHERS)
- CASING BEAD (BY OTHERS)
- DRYVIT MD SPACERS™ OR EQUIVALENT LAPPED OVER CASING BEAD WITH WEEPS AND CONTINUOUS METAL FLASHING
- HEAD FLASHING WITH END DAMS (BY OTHERS)
- 12.7 MM (1/2 IN) MIN. SEALANT JOINT WITH CLOSED CELL BACKER ROD AND APPROVED TREMCO CPG SEALANT OR APPROVED EQUIVALENT
- DRYVIT AQUAFLASH® SYSTEM OR APPROVED FLASHING WRAPPED TO INSIDE FACE OF FRAMING (NOTE 2)
- TREMCO CPG SEALANT OR EQUIVALENT (BY OTHERS)

NOTE:
 1. SHEET TYPE WATER-RESISTIVE MEMBRANES SHALL BE INSTALLED IN A WEATHER BOARD FASHION.
 2. DRYVIT AQUAFLASH® SYSTEM OR APPROVED FLASHING MAY BE USED WHEN DRYVIT BACKSTOP® NTX IS USED AS THE WATER-RESISTIVE BARRIER



Direct-Applied Cement Board MD Finish System™

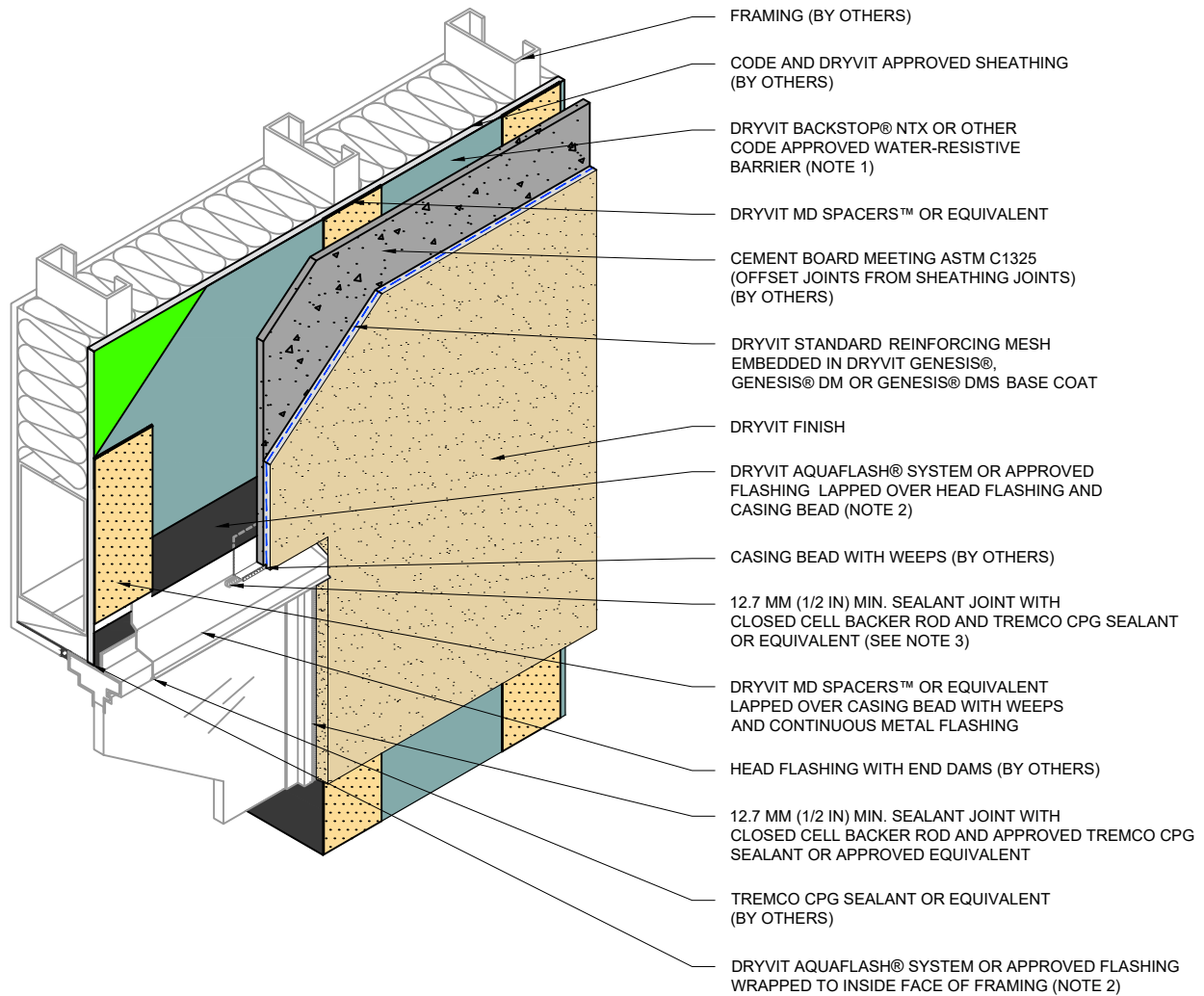
 Dryvit Technical Support: 800-556-7752	Detail: Storefront Window Head			File Name:	 Construction Products Group
	Drawn by: KAB	Checked by: CW	Scale: NTS	DA-CBMD 06	
	Revision #: 00	Revised by: -	Date: 08/2023		
<small>www.tremcocpg.com</small>					



NOTE:
 1. SHEET TYPE WATER-RESISTIVE MEMBRANES SHALL BE INSTALLED IN A WEATHER BOARD FASHION.
 2. DRYVIT AQUAFLASH® SYSTEM OR APPROVED FLASHING MAY BE USED WHEN DRYVIT BACKSTOP® NTX IS USED AS THE WATER-RESISTIVE BARRIER



Direct-Applied Cement Board MD Finish System™

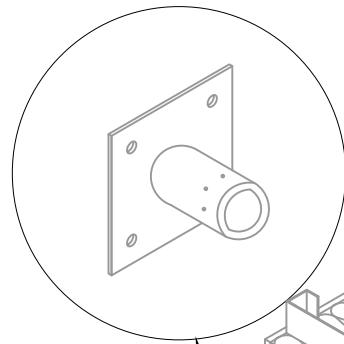
 Dryvit Technical Support: 800-556-7752	Detail: Flanged Window Sill / Jamb			File Name:	
	Drawn by: KAB	Checked by: CW	Scale: NTS	DA-CBMD 07	
	Revision #: 00	Revised by: -	Date: 08/2023		
www.tremcocpg.com			 Construction Products Group		



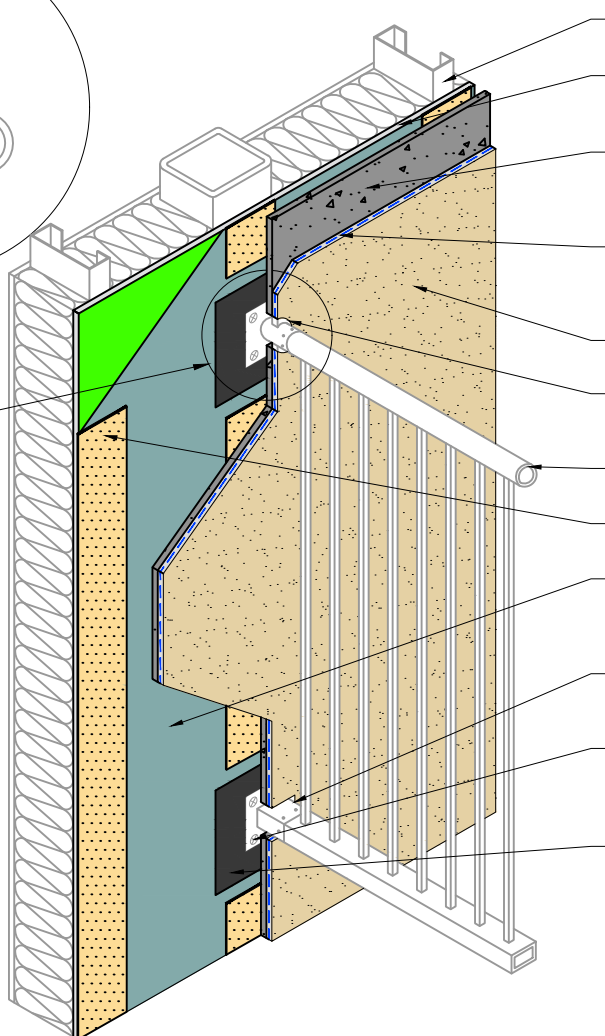
- NOTE:
1. SHEET TYPE WATER-RESISTIVE MEMBRANES SHALL BE INSTALLED IN A WEATHER BOARD FASHION.
 2. DRYVIT AQUAFLASH® SYSTEM OR APPROVED FLASHING MAY BE USED WHEN DRYVIT BACKSTOP® NTX IS USED AS THE WATER-RESISTIVE BARRIER
 3. DO NOT BLOCK CASING BEAD WEEPS WITH SEALANT. SEALANT MAY OPTIONALLY BE OMITTED.

Direct-Applied Cement Board MD Finish System™

 <p>Dryvit Technical Support: 800-556-7752</p>	Detail: Flanged Window Head			File Name:	 <p>Construction Products Group</p>
	Drawn by: KAB	Checked by: CW	Scale: NTS	DA-CBMD 08	
	Revision #: 00	Revised by: -	Date: 08/2023		
<small>www.tremcocpg.com</small>					



SLEEVE (STRUCTURAL BACKING BY OTHERS)





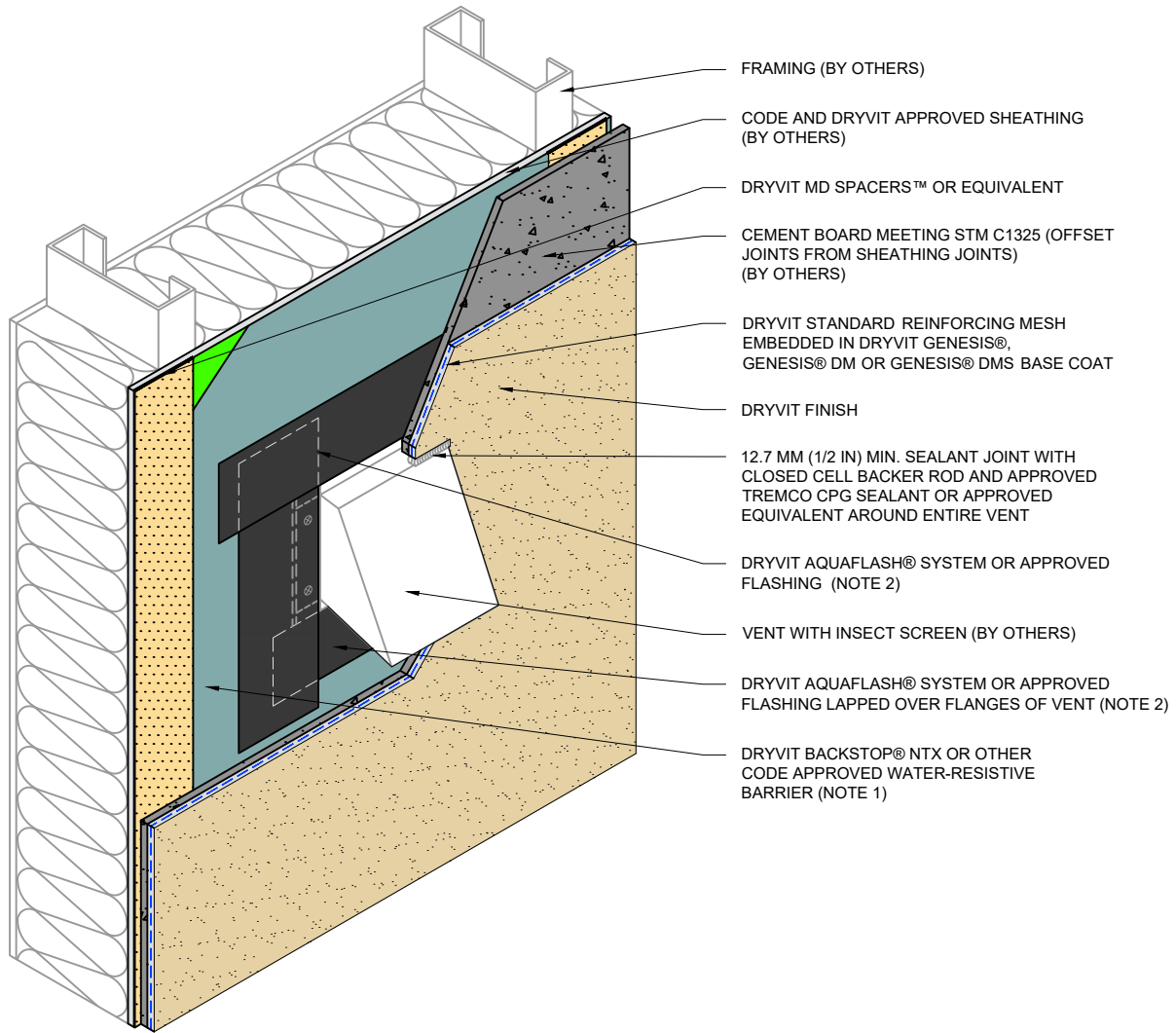
- FRAMING (BY OTHERS)
- CODE AND DRYVIT APPROVED SHEATHING (BY OTHERS)
- CEMENT BOARD MEETING STM C1325 (OFFSET JOINTS FROM SHEATHING JOINTS) (BY OTHERS)
- DRYVIT STANDARD REINFORCING MESH EMBEDDED IN DRYVIT GENESIS®, GENESIS® DM OR GENESIS® DMS BASE COAT
- DRYVIT FINISH
- 12.7 MM (1/2 IN) MIN. SEALANT JOINT CLOSED CELL WITH BACKER ROD
- BALCONY RAILING (BY OTHERS)
- DRYVIT MD SPACERS™ OR EQUIVALENT
- DRYVIT BACKSTOP® NTX OR OTHER CODE APPROVED WATER-RESISTIVE BARRIER (NOTE 1)
- 12.7 MM (1/2 IN) MIN. SEALANT JOINT CLOSED CELL WITH BACKER ROD
- FASTEN RAILING ATTACHMENTS THROUGH AQUAFASH® SYSTEM OR APPROVED FLASHING (NOTE 2)
- DRYVIT AQUAFASH® SYSTEM OR APPROVED FLASHING (NOTE 2)

NOTE:

1. SHEET TYPE WATER-RESISTIVE MEMBRANES SHALL BE INSTALLED IN A WEATHER BOARD FASHION.
2. DRYVIT AQUAFASH® SYSTEM OR APPROVED FLASHING MAY BE USED WHEN DRYVIT BACKSTOP® NTX IS USED AS THE WATER-RESISTIVE BARRIER

Direct-Applied Cement Board MD Finish System™



 <p>Dryvit Technical Support: 800-556-7752</p>	Detail: Railing Attachment			File Name:	 <p>Construction Products Group</p>
	Drawn by: KAB	Checked by: CW	Scale: NTS	DA-CBMD 09	
	Revision #: 00	Revised by: -	Date: 08/2023		
<small>www.tremcocpg.com</small>					

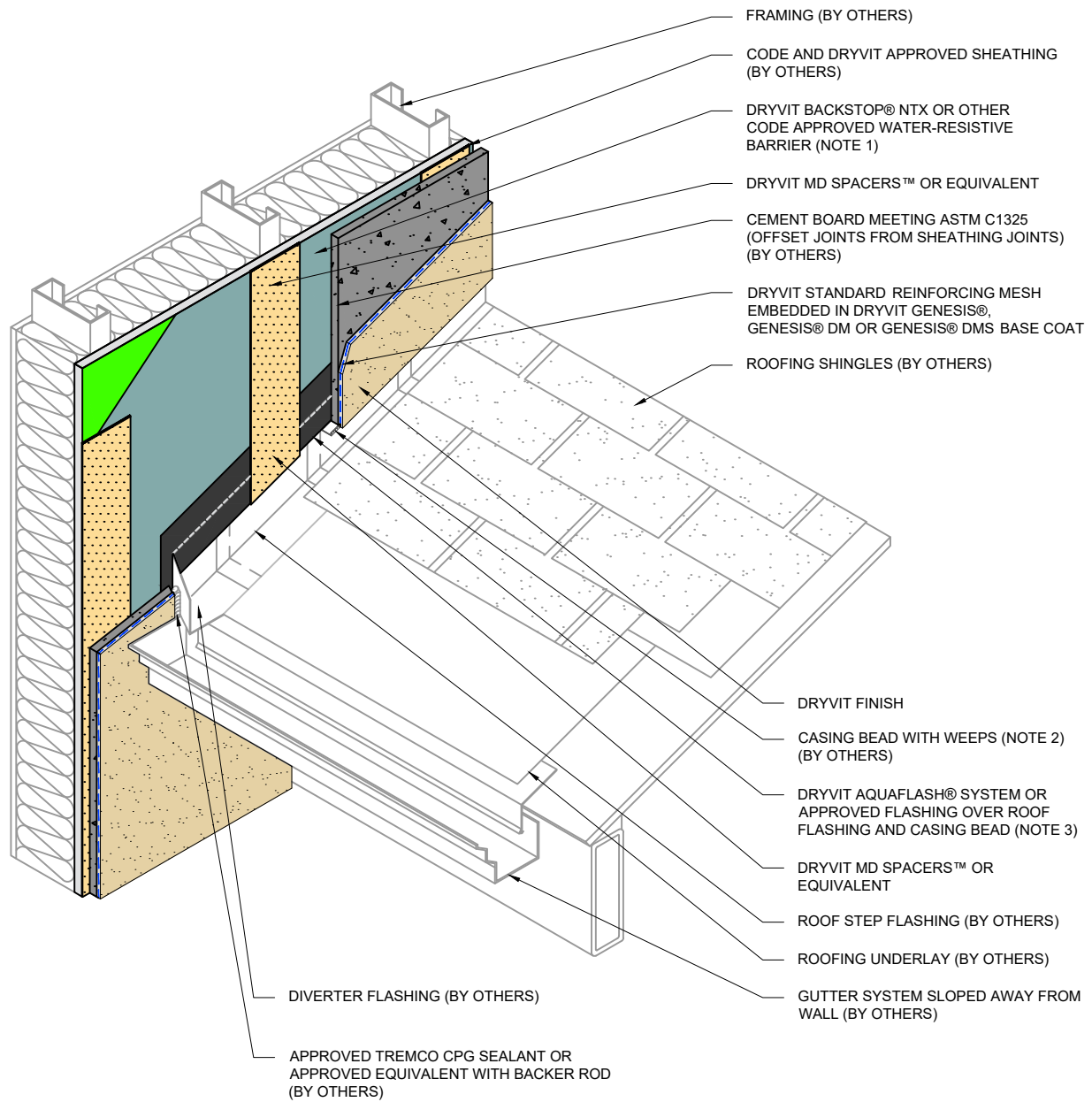


NOTE:

1. SHEET TYPE WATER-RESISTIVE MEMBRANES SHALL BE INSTALLED IN A WEATHER BOARD FASHION.
2. DRYVIT AQUAFLASH® SYSTEM OR APPROVED FLASHING MAY BE USED WHEN DRYVIT BACKSTOP® NTX IS USED AS THE WATER-RESISTIVE BARRIER



Direct-Applied Cement Board MD Finish System™

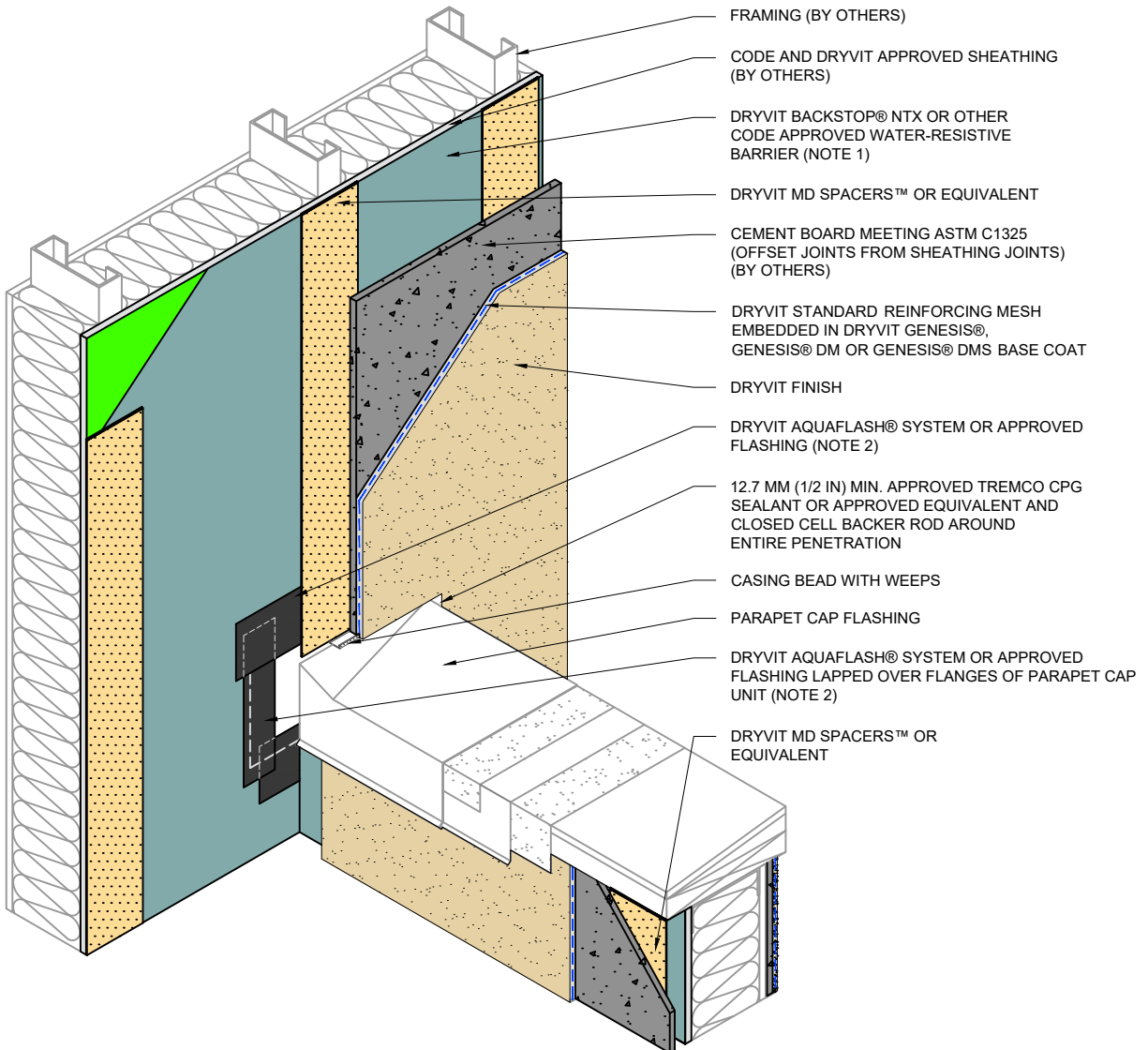
 Dryvit Technical Support: 800-556-7752	Detail: Vent Penetration			File Name:	
	Drawn by: KAB	Checked by: CW	Scale: NTS	DA-CBMD 10	
	Revision #: 00	Revised by: -	Date: 08/2023		
www.tremcocpg.com			 Construction Products Group		



- NOTE:
1. SHEET TYPE WATER-RESISTIVE MEMBRANES SHALL BE INSTALLED IN A WEATHER BOARD FASHION.
 2. TERMINATE SYSTEM MIN. 2" (50 MM) OFF ROOF.
 3. DRYVIT AQUAFLASH® SYSTEM OR APPROVED FLASHING MAY BE USED WHEN DRYVIT BACKSTOP® NTX IS USED AS THE WATER-RESISTIVE BARRIER

Direct-Applied Cement Board MD Finish System™

 <p>Dryvit Technical Support: 800-556-7752</p>	Detail: Termination at Sloped Roof			File Name:	 <p>Construction Products Group</p>
	Drawn by: KAB	Checked by: CW	Scale: NTS	DA-CBMD 11	
	Revision #: 00	Revised by: -	Date: 08/2023		
<small>www.tremcocpg.com</small>					



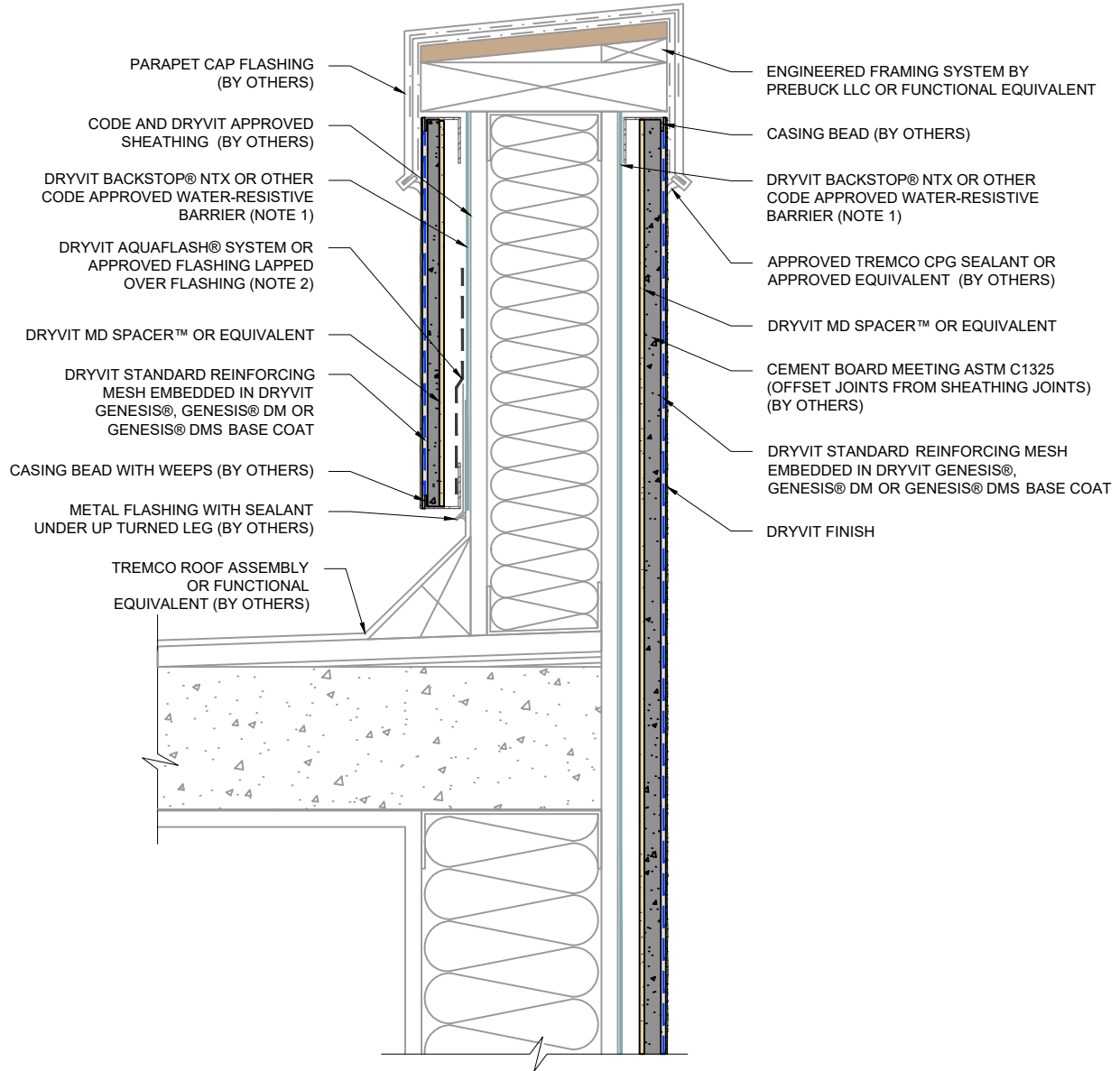
- FRAMING (BY OTHERS)
- CODE AND DRYVIT APPROVED SHEATHING (BY OTHERS)
- DRYVIT BACKSTOP® NTX OR OTHER CODE APPROVED WATER-RESISTIVE BARRIER (NOTE 1)
- DRYVIT MD SPACERS™ OR EQUIVALENT
- CEMENT BOARD MEETING ASTM C1325 (OFFSET JOINTS FROM SHEATHING JOINTS) (BY OTHERS)
- DRYVIT STANDARD REINFORCING MESH EMBEDDED IN DRYVIT GENESIS®, GENESIS® DM OR GENESIS® DMS BASE COAT
- DRYVIT FINISH
- DRYVIT AQUAFLASH® SYSTEM OR APPROVED FLASHING (NOTE 2)
- 12.7 MM (1/2 IN) MIN. APPROVED TREMCO CPG SEALANT OR APPROVED EQUIVALENT AND CLOSED CELL BACKER ROD AROUND ENTIRE PENETRATION
- CASING BEAD WITH WEEPS
- PARAPET CAP FLASHING
- DRYVIT AQUAFLASH® SYSTEM OR APPROVED FLASHING LAPPED OVER FLANGES OF PARAPET CAP UNIT (NOTE 2)
- DRYVIT MD SPACERS™ OR EQUIVALENT

NOTE:
 1. SHEET TYPE WATER-RESISTIVE MEMBRANES SHALL BE INSTALLED IN A WEATHER BOARD FASHION.
 2. DRYVIT AQUAFLASH® SYSTEM OR APPROVED FLASHING MAY BE USED WHEN DRYVIT BACKSTOP® NTX IS USED AS THE WATER-RESISTIVE BARRIER

Direct-Applied Cement Board MD Finish System™



Detail: Parapet Wall Intersection			File Name:
Drawn by: KAB	Checked by: CW	Scale: NTS	DA-CBMD 12
Revision #: 00	Revised by: -	Date: 08/2023	

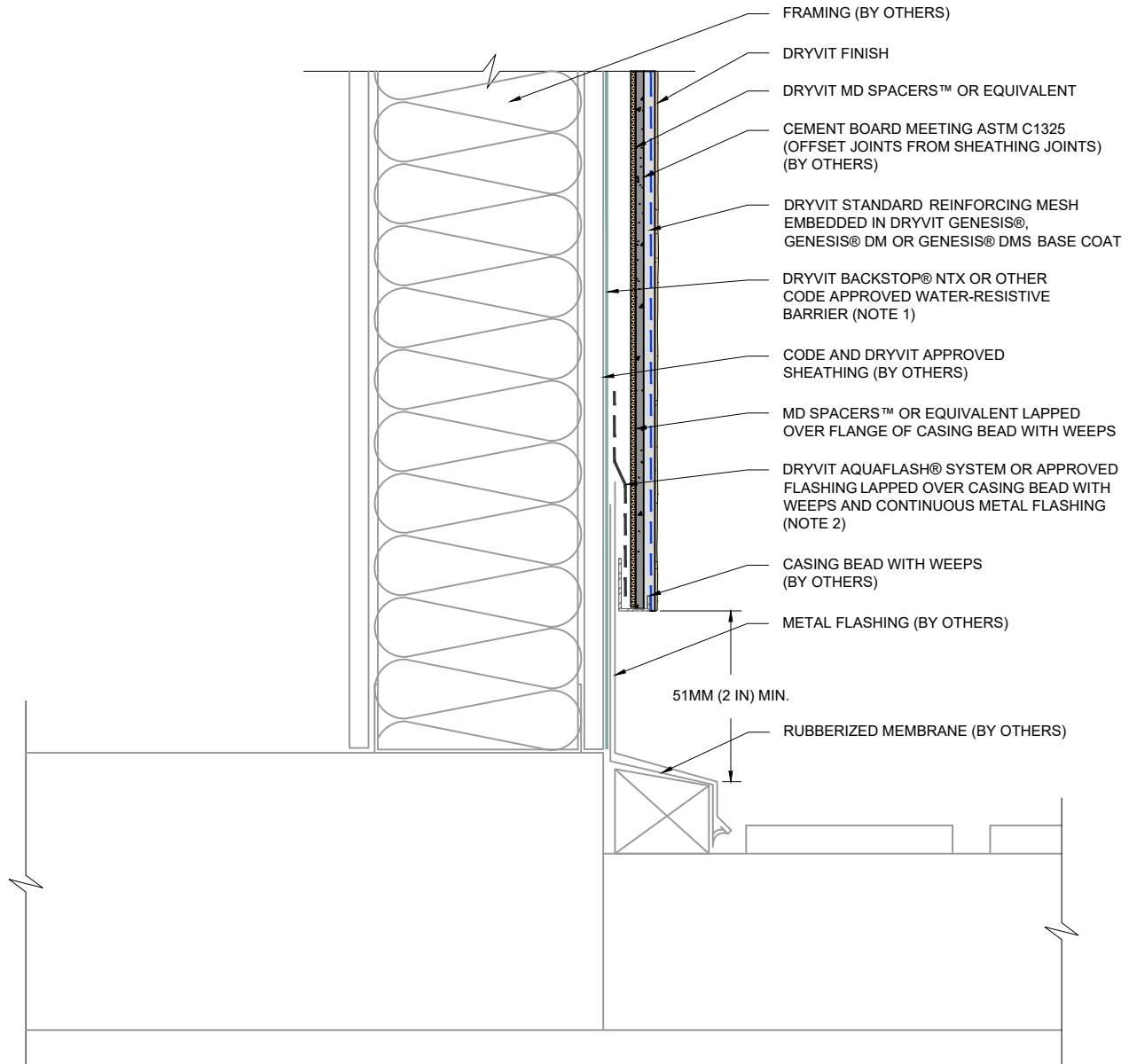




- NOTE:
1. SHEET TYPE WATER-RESISTIVE MEMBRANES SHALL BE INSTALLED IN A WEATHER BOARD FASHION.
 2. DRYVIT AQUAFLASH® SYSTEM OR APPROVED FLASHING MAY BE USED WHEN DRYVIT BACKSTOP® NTX IS USED AS THE WATER-RESISTIVE BARRIER

Direct-Applied Cement Board MD Finish System™

 Dryvit Technical Support: 800-556-7752	Detail: Parapet Termination			File Name:	 Construction Products Group
	Drawn by: KAB	Checked by: CW	Scale: NTS	DA-CBMD 13	
	Revision #: 00	Revised by: -	Date: 08/2023		
www.tremcocpg.com					



- NOTE:
1. SHEET TYPE WATER-RESISTIVE MEMBRANES SHALL BE INSTALLED IN A WEATHER BOARD FASHION.
 2. DRYVIT AQUAFASH® SYSTEM OR APPROVED FLASHING MAY BE USED WHEN DRYVIT BACKSTOP® NTX IS USED AS THE WATER-RESISTIVE BARRIER

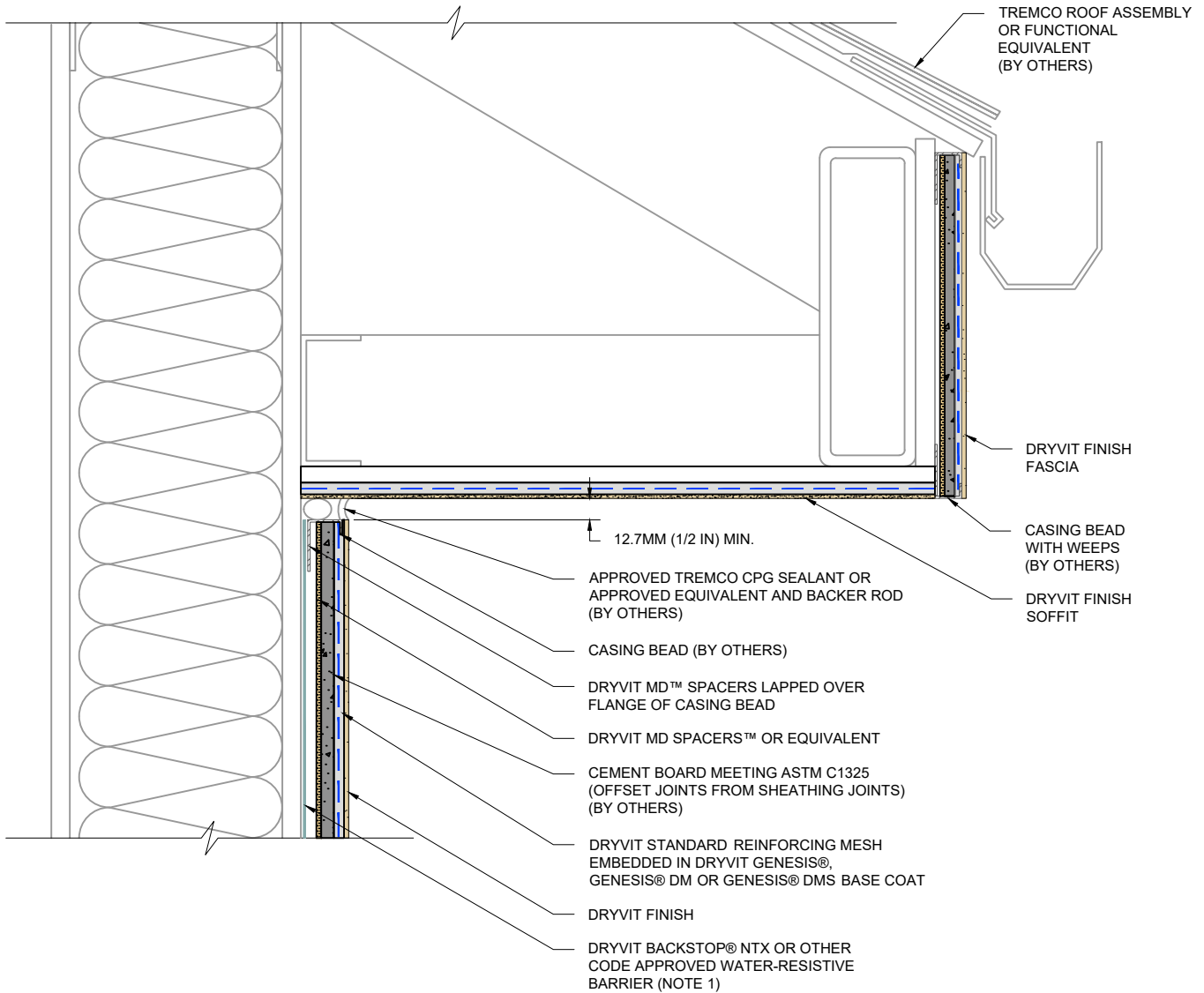
Direct-Applied Cement Board MD Finish System™



Detail: Termination at Deck		
Drawn by: KAB	Checked by: CW	Scale: NTS
Revision #: 00	Revised by: -	Date: 08/2023



File Name:	DA-CBMD 14
------------	------------

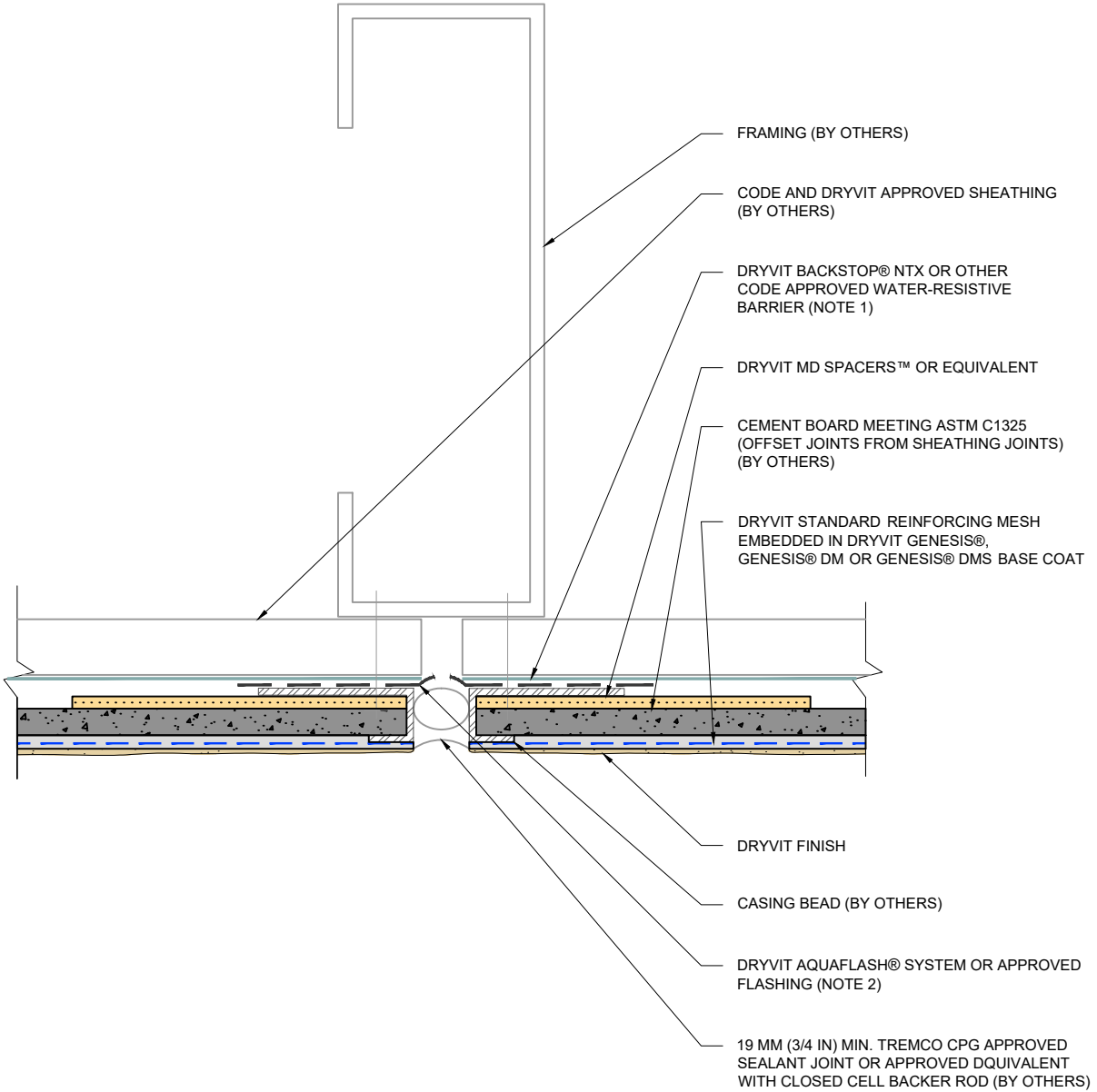




NOTE:
 1. SHEET TYPE WATER-RESISTIVE MEMBRANES SHALL BE
 INSTALLED IN A WEATHER BOARD FASHION.



Direct-Applied Cement Board MD Finish System™

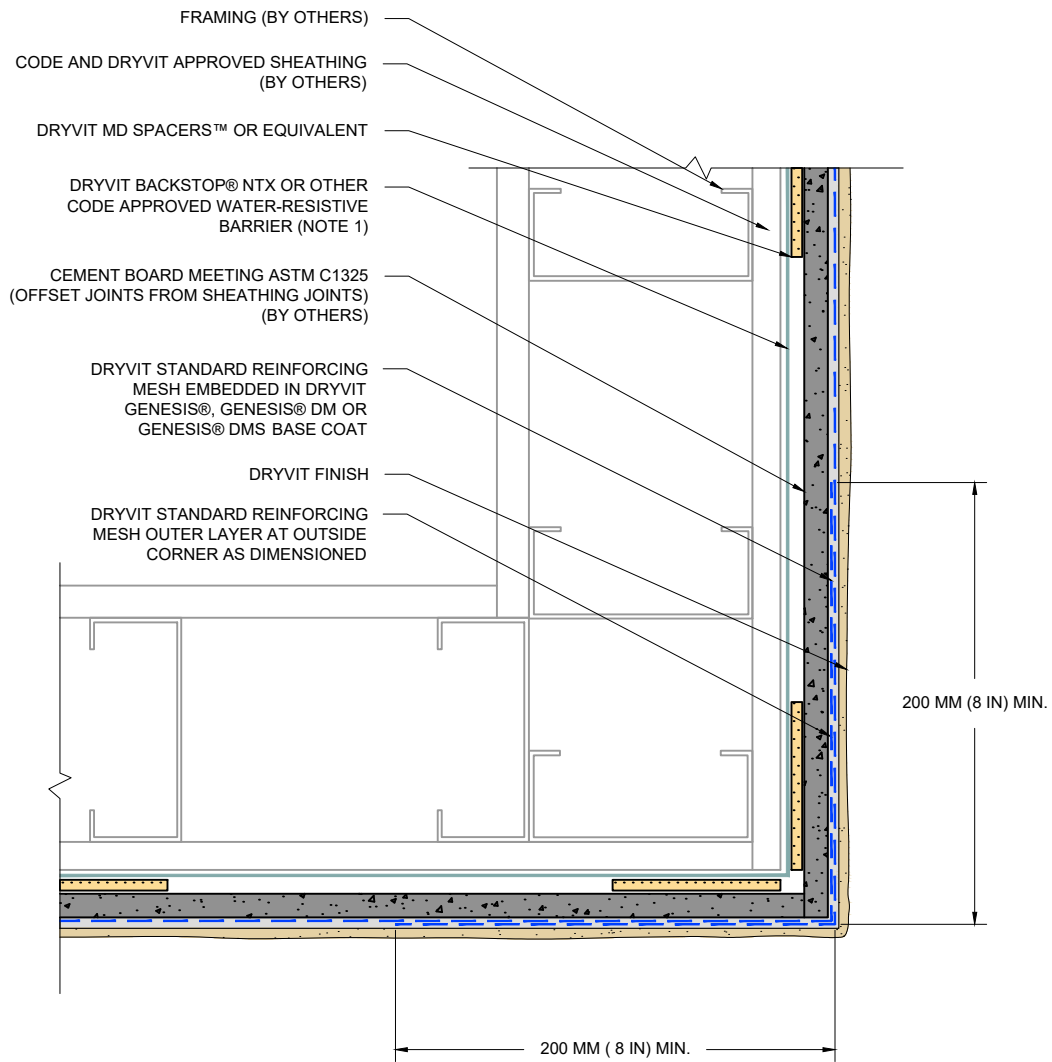
 Dryvit Technical Support: 800-556-7752	Detail: Soffit / Fascia Termination			File Name:		 Construction Products Group
	Drawn by: KAB	Checked by: CW	Scale: NTS	DA-CBMD 15		
	Revision #: 00	Revised by: -	Date: 08/2023			
<small>www.tremcocpg.com</small>						



- NOTE:
1. SHEET TYPE WATER-RESISTIVE MEMBRANES SHALL BE INSTALLED IN A WEATHER BOARD FASHION.
 2. DRYVIT AQUAFLASH® SYSTEM OR APPROVED FLASHING MAY BE USED WHEN DRYVIT BACKSTOP® NTX IS USED AS THE WATER-RESISTIVE BARRIER

Direct-Applied Cement Board MD Finish System™



 Dryvit Technical Support: 800-556-7752	Detail: Vertical Control / Expansion Joint			File Name:	 Construction Products Group
	Drawn by: KAB	Checked by: CW	Scale: NTS	DA-CBMD 16	
	Revision #: 00	Revised by: -	Date: 08/2023		
<small>www.tremcocpg.com</small>					

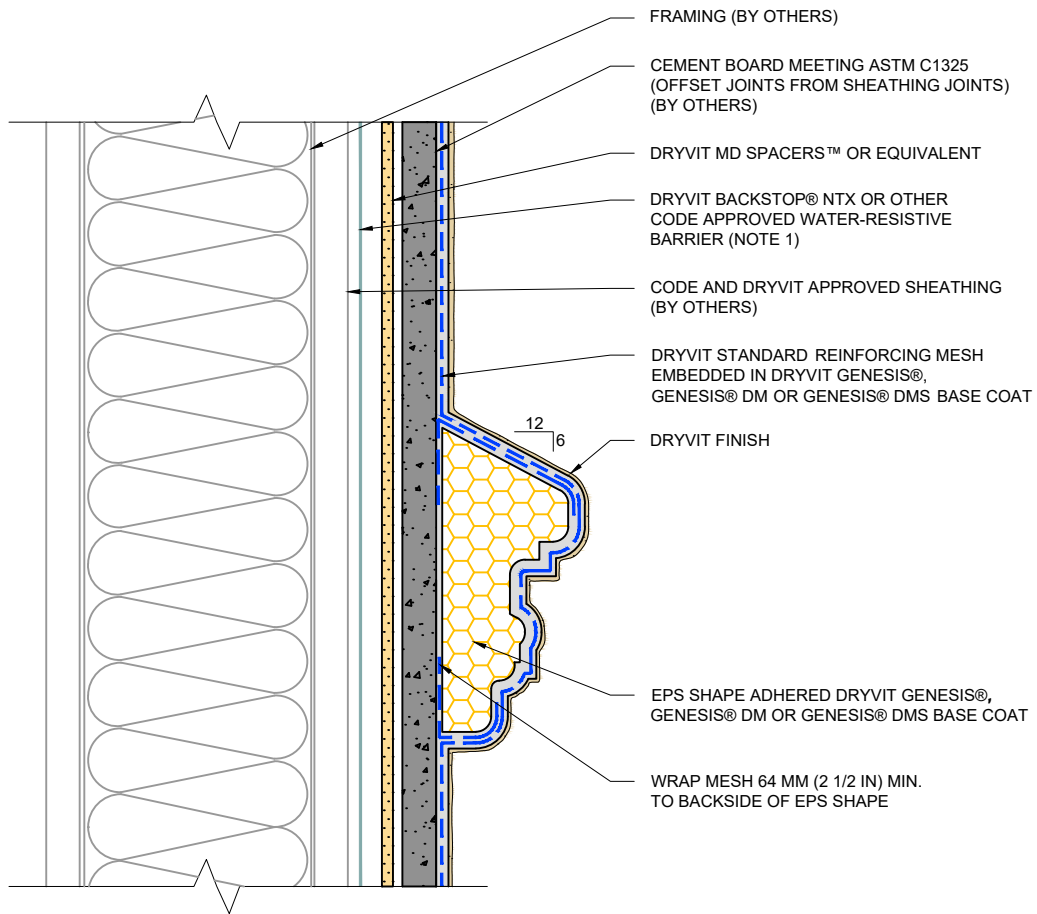


NOTE:

1. SHEET TYPE WATER-RESISTIVE MEMBRANES SHALL BE INSTALLED IN A WEATHER BOARD FASHION.
2. DO NOT LAP REINFORCING MESH WITHIN 8" (200 MM) OF OUTSIDE CORNERS



Direct-Applied Cement Board MD Finish System™

 Dryvit Technical Support: 800-556-7752	Detail: Outside Corner			File Name:	 TREMCO Construction Products Group
	Drawn by: KAB	Checked by: CW	Scale: NTS	DA-CBMD 17	
	Revision #: 00	Revised by: -	Date: 08/2023		
<small>www.tremcocpg.com</small>					



NOTE:
 1. SHEET TYPE WATER-RESISTIVE MEMBRANES SHALL BE INSTALLED IN A WEATHER BOARD FASHION.

Direct-Applied Cement Board MD Finish System™

 Dryvit Technical Support: 800-556-7752	Detail: EPS Shape Attachment			File Name:	 Construction Products Group
	Drawn by: KAB	Checked by: CW	Scale: NTS	DA-CBMD 18	
	Revision #: 00	Revised by: -	Date: 08/2023		
<small>www.tremcocpg.com</small>					