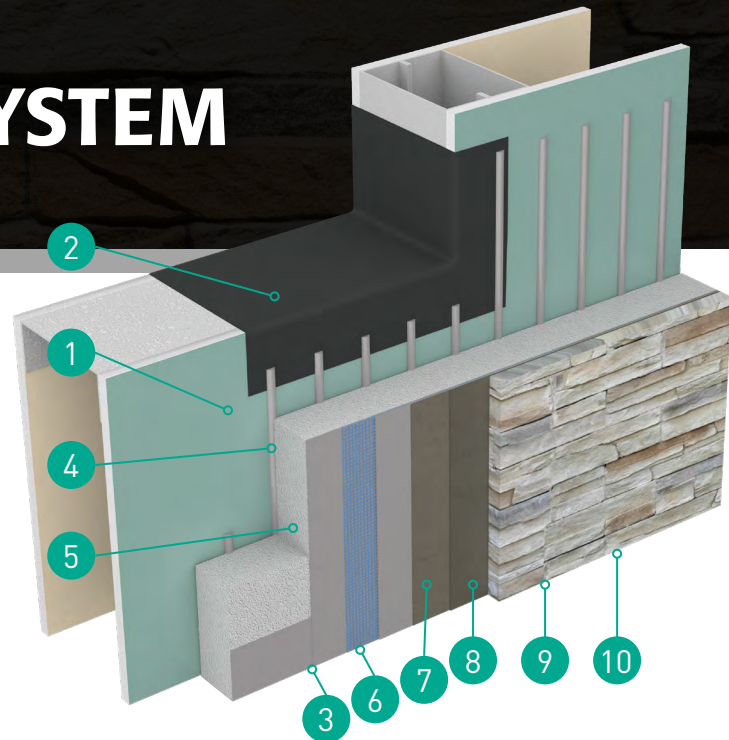


OUTSULATION® MASONRY VENEER SYSTEM

System Overview

An exterior insulation and finish system (EIFS) that incorporates moisture drainage, an air/water-resistive barrier, Continuous Insulation (CI), and a Manufactured Stone Masonry Veneer compliant with ICC Acceptance Criteria AC51 aesthetic finish.

Outsulation Masonry Veneer System (MVS) offers an engineered and cost-effective system that is easy to install and built for lasting performance.



Features & Benefits

- Compliant with NFPA 285, NFPA 268 and ASTM E-119
- Single-Source Wall Solution Providing Protection Against the Effects of Air, Water, Thermal and Vapor
- Increased Durability and Impact-Resistance
- A Variety of Manufactured Stone Masonry Veneers Allow Maximum Freedom in Architectural Design and Aesthetics
- An Excellent Complement to Dryvit's Variety of Other Finishes, Textures and Colors
- Stone Masonry Veneer Combined with Continuous Insulation for Enhanced Energy Efficiency
- Cost Savings through Lightweight Veneer Reducing Structural Demand: No Shelf or Bearing Angles, and Reduced Footing and Foundation



Dryvit Tuscan Glaze Finish with Masonry Veneer

System Components

1	Dryvit Air/Water-Resistive Barrier and Accessory Components
2	Dryvit AquaFlash® System
3	Dryvit Drainage Components and/or Pre-Coated Starter Boards
4	Dryvit Primus® Adhesive in Vertical Notched Trowel Configuration
5	EPS Insulation Board for incidental moisture drainage
6	Dryvit Reinforced Base Coat (Dryvit Intermediate Mesh Only)
7	Dryvit Modified Primus Skim Coat Substrate Preparation
8	Dryvit Modified Primus Adhesive for Manufactured Stone Masonry Veneer
9	Dryvit-Approved Manufactured Stone Masonry Veneer (Complying with ICC Acceptance Criteria AC51)
10	Mortar for Joint Treatment Complying with Stone Masonry Veneer Manufacturer's Requirements (Where Applicable)

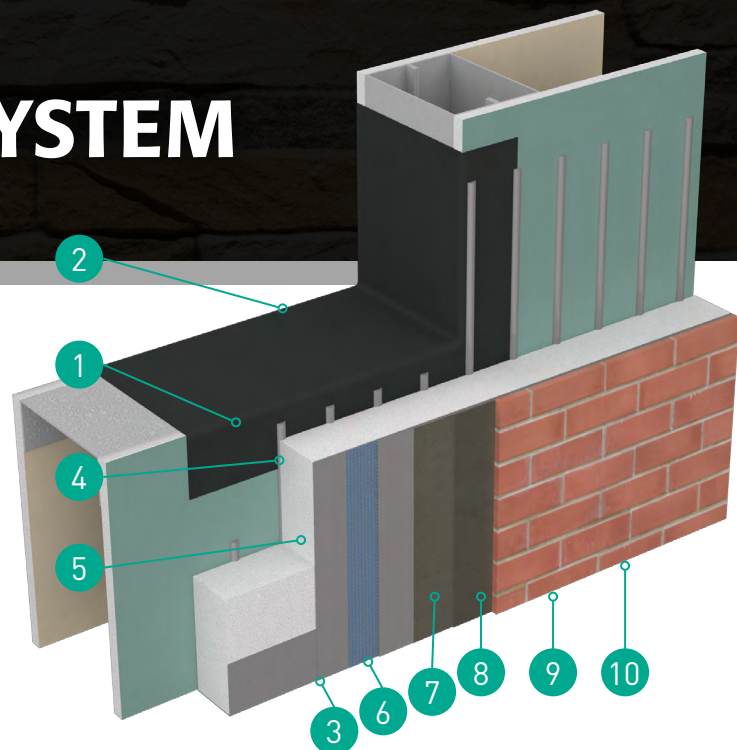


OUTSULATION® MASONRY VENEER SYSTEM WITH THIN BRICK

System Overview

An exterior insulation and finish system (EIFS) that incorporates moisture drainage, an air/water-resistive barrier, Continuous Insulation (CI), and a Thin Brick compliant to ASTM C1088.

Outsulation Masonry Veneer System (MVS) offers an engineered and cost-effective wall system that is easy to install and built for lasting performance.



Features & Benefits

- Compliant with NFPA 285, NFPA 268 and ASTM E-119
- Single-Source Wall Solution Providing Protection Against the Effects of Air, Water, Thermal and Vapor
- Increased Durability and Impact-Resistance
- A Variety of Manufactured Stone Masonry Veneers Allow Maximum Freedom in Architectural Design and Aesthetics
- An Excellent Complement to Dryvit's Variety of Other Finishes, Textures and Colors
- Stone Masonry Veneer Combined with Continuous Insulation for Enhanced Energy Efficiency
- Cost Savings through Lightweight Veneer Reducing Structural Demand: No Shelf or Bearing Angles, and Reduced Footing and Foundation



Dryvit Tibu5 Stone Finish with Thin Brick

System Components

1	Dryvit Air/Water-Resistive Barrier and Accessory Components
2	Dryvit AquaFlash® System
3	Dryvit Drainage Components and/or Pre-Coated Starter Boards
4	Dryvit Primus® Adhesive in Vertical Notched Trowel Configuration
5	EPS Insulation Board for incidental moisture drainage
6	Dryvit Reinforced Base Coat (Dryvit Intermediate Mesh Only)
7	Dryvit Modified Primus Skim Coat Substrate Preparation
8	Dryvit Modified Primus Adhesive for Manufactured Stone Masonry Veneer
9	Dryvit-Approved Thin Veneer Brick Units Made from Clay or Shale (Complying with ASTM C1088).
10	Mortar for Joint Treatment Complying with Stone Masonry Veneer Manufacturer's Requirements (Where Applicable)

