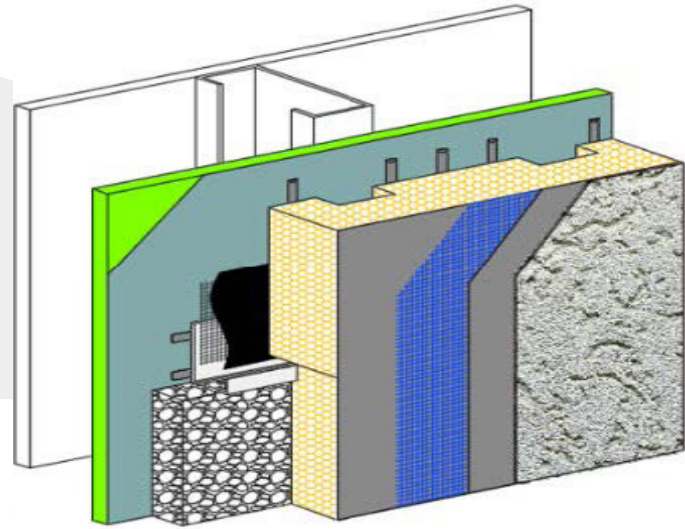


OUTSULATION® MD

An exterior wall insulation and finish system with moisture drainage that incorporates continuous insulation and an air/water-resistive barrier

Summary

Taking the worry out of the wall by using an advanced design concept - moisture drainage for even better wall performance. Outsulation® MD is part of Dryvit's family of high-performance exterior insulation and finish systems for commercial use. Since 1969, architects and owners have looked to Dryvit for excellence in EIFS. For over 50 years, the barrier style, Class PB, Outsulation System has remained essentially as originally designed and has been installed on over 500,000 buildings worldwide. Today, there is increased demand for a wall system to be able to drain away incidental moisture. Dryvit responds to this demand with Outsulation MD.



Moisture Drainage Technology

Outsulation MD offers the most comprehensive, easy-to-install drainage system available for commercial use today. It provides three lines of defense against water intrusion. The first is Dryvit's time-tested combination of reinforced base coat and finish. The second is our specially-designed, grooved EPS with drainage track and vent assembly, providing continuous insulation to meet local Energy Codes. The third is a Dryvit/Tremco® approved air/water resistive barrier and accessories. A compatible sealant must be utilized at all system terminations.

Dryvit Systems, Inc. is an ISO 9001:2015 and ISO 14001:2015 certified company. ISO standards have been established worldwide as a common denominator for product excellence. Dryvit is the recognized leader in construction technology. With leadership comes an obligation and commitment to research and development. The Outsulation MD System is an example of our determination to continuously evaluate market demands and develop new and exciting products.

Features

- | | |
|---|------------------------------------|
| • Moisture Drainage | • Drainage track and vent assembly |
| • High-Performance Exterior Insulation | • Air/water-resistive barrier |
| • Reinforced Base Coat | • Waterproof flashing material |
| • Specially-designed, grooved EPS board | • Warranty |



System Components

1. Air/Water-Resistive Barrier: Backstop® NT™ Water-Resistive Membrane and Air Barrier (available in Texture, Smooth or Spray) or ExoAir® 230 Synthetic Air & Vapor Permeable Membrane
2. Dryvit Grid Tape™
3. Dryvit AquaFlash® System, Flashing Tape™ and Surface Conditioner™, Dymonic® 100 or Backstop Flash & Fill™
4. Dryvit Vent Assembly™ (not shown)
5. Dryvit Track and Vent Track™ (not shown)
6. Dryvit AP Adhesive™ to adhere Dryvit Track and Vent Track (not shown)
7. Dryvit Adhesive in vertical notched trowel configuration (not shown)
8. Insulation board with channels, creating a layer of continuous insulation



9. Dryvit Reinforced Base Coat
10. Dryvit Finish

Why Tremco Construction Products Group?

The drainage channels present in Outsulation MD will evacuate “incidental” water that, for a variety of reasons, may find its way behind the EPS insulation. Dryvit/Tremco approved air/water resistive barriers prevent this moisture from coming into contact with the substrate, as it drains. Classified in Canada as a Type III air barrier, it is a specially formulated, flexible, polymer-based, noncementitious coating that has proven itself to be a watertight membrane.

One Stop for Your Next Project’s Building Envelope

Imagine the convenience of one source for information and assistance on building envelope components. One source for all the project-specific, custom details with solutions that are tested, proven and warranted together. A Tremco Construction Products Group building envelope is designed and tested to work as one continuous system and is warranted together in a single document.

Dryvit Systems, Inc. | One Energy Way | West Warwick, RI 02893 | 401.822.4100 | dryvit.com

Tremco Construction Products Group (CPG) brings together Tremco Incorporated’s Commercial Sealants & Waterproofing and Roofing & Building Maintenance operating divisions; Dryvit Systems, Inc.; Nudura Inc.; Willseal; Weatherproofing Technologies, Inc. and Weatherproofing Technologies Canada, Inc.

Dryvit®, Outsulation®, Backstop®, and AquaFlash® are registered trademarks of Dryvit Systems, Inc. Tremco®, ExoAir® and Dymonic® are registered trademarks of Tremco Incorporated. Use of the ® symbol indicates registration with the US Patent & Trademark Office and the Canadian Intellectual Property Office.

DS930



Construction Products Group

tremcocpg.com